

Converting Colors

XYZ(67.9514, 67.9914, 73.1973)

Have a look what the booklet for
XYZ(67.9514, 67.9914, 73.1973)
contains.

XYZ(67.8173, 67.7712, 73.1251)	3
<i>Conversions</i>	4
<i>Details</i>	6
<i>Harmonies</i>	12
<i>Previews</i>	24
<i>Color Blindness Simulation</i>	28
<i>CSS Examples</i>	31

Color

**XYZ(67.8173, 67.7712,
73.1251)**

Conversions

Conversions Part 1

Format	Color
Hex	E6D2D6
RGB	230, 210, 214
RGB Percent	90%, 82%, 84%
CMY	0.0980, 0.1764, 0.1608
CMYK	0.00, 0.09, 0.07, 0.10
HSL	348°, 29%, 86%
HSV	348°, 9%, 90%
XYZ	67.8173, 67.7712, 73.1251
YIQ	216.4360, 10.6360, 5.4840

Conversions

Conversions Part 2

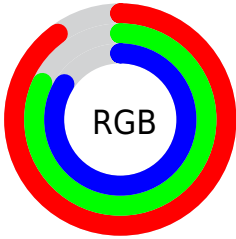
Format	Color
R _Y B	230, 210, 214
Decimal	15127254
CIE Lab	85.89, 7.60, 0.53
CIE LCh	86, 7.620, 3.991
Yxy	67.7712, 0.3249, 0.3247
Android (android.graphics.Color)	4293317334 (0xFFE6D2D6)
YUV	216.4360, -1.2009, 11.8956
Hunter-Lab	82.3233, 2.9813, 4.9609

Details

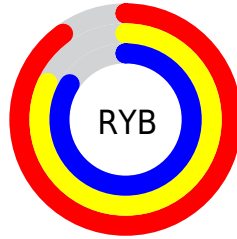
The XYZ color **67.8173, 67.7712, 73.1251** is a light color, and the websafe version is hex **CCCCCC**. A complement of this color would be **68.6052, 75.7880, 82.9679**, and the grayscale version is **65.5720, 68.9869, 75.1267**.

A 20% lighter version of the original color is **95.0500, 100.0000, 108.9000**, and **35.6020, 35.2788, 37.7339** is the 20% darker color. If you saturate the color by 10%, you get **60.3230, 56.3333, 59.6789**, and if you desaturate by 10%, it is **76.3971, 80.9534, 88.2450**.

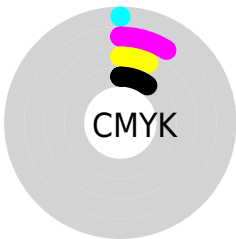
Distribution



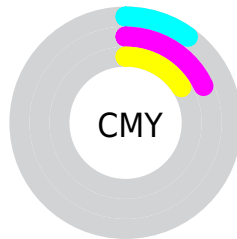
- Red (90%)
- Green (82%)
- Blue (84%)



- Red (90%)
- Yellow (82%)
- Blue (84%)



- Cyan (0%)
- Magenta (9%)
- Yellow (7%)
- Black (10%)



- Cyan (10%)
- Magenta (18%)
- Yellow (16%)

Brightness & Saturation Gradients

These gradients show how the XYZ color 67.8173, 67.7712, 73.1251 changes by changing the brightness by 10 percent. The first figure shows a shift by +10% for each color and the second figure -10%.

Similar to the brightness gradients but the following saturation gradients show a change of the XYZ color 67.8173, 67.7712, 73.1251 by changing the saturation by 10% instead.

67.8173, 67.7712,
73.1251

67.8173, 67.7712,
73.1251

442.2353,
452.6849, 490.5307

50.0222, 49.7116,
53.5858

115.1341,
116.0248, 125.3774

35.6489, 35.1843,
37.8797

145.3865,
146.9875, 158.9274

24.3320, 23.8049,
25.5882

180.5221,
183.0202, 197.9848

15.7062, 15.1889,
16.2929

220.9063,
224.5071, 242.9681

9.4060, 8.9521,
9.5750

266.9043,
271.8326, 294.2957

5.0662, 4.7100,
5.0162

318.8816,

2.3213, 2.0781,

325.3811, 352.3864

2.1979

377.2035,
385.5371, 417.6585

■ 0.8055, 0.6523,
0.6731

■ 0.0000, 0.0000,
0.0000

■ 67.8173, 67.7712,
73.1251

■ 67.8173, 67.7712,
73.1251

■ 60.3230, 56.3333,
59.6789

■ 76.3971, 80.9534,
88.2450

■ 53.8651, 46.5580,
47.8440

■ 85.7760, 95.2962,
104.9820

■ 48.3989, 38.3704,
37.5609

■ 86.4435, 95.5632,
108.4972

■ 43.8747, 31.6861,
28.7642

■ 40.2379, 26.4132,
21.3843

■ 37.4285, 22.4495,
15.3454

■ 35.3787, 19.6789,
10.5647

■ 34.0093, 17.9647,
6.9494

■ 33.2072, 17.1049,
4.3876

Harmonies

Analogous

The Analogous color harmony consists of three colors that are next to each other on the color wheel.



67.4749, 67.7712, 78.0825



67.8173, 67.7712, 73.1251



67.2345, 67.7712, 68.5524

Triad

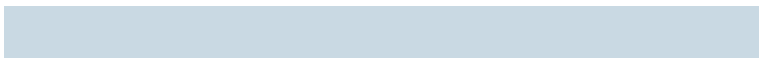
The Triadic color harmony groups three colors that are evenly spaced from another and form a triangle on the color wheel.



67.8173, 67.7712, 73.1251



62.5583, 67.7712, 66.1130



62.9554, 67.7712, 82.7615

Complementary

The Complementary color scheme is a pair of colors which are on the opposite of each other on the color wheel.



67.8173, 67.7712, 73.1251



68.6052, 75.7880, 82.9679

Split Complementary

Split-complementary colors differ from the complementary color scheme. The scheme consists of three colors, the original color and two neighbors of the complement color.



61.6745, 67.7712, 79.2906



67.8173, 67.7712, 73.1251



61.4481, 67.7712, 69.6603

Square

The Square scheme is like the rectangle color scheme, but the four colors are evenly spaced on the color wheel.



67.8173, 67.7712, 73.1251



64.1814, 67.7712, 64.6212



61.1275, 67.7712, 74.4616



64.6481, 67.7712, 83.7904

Rectangle

The Rectangle color scheme consists of four colors that form a rectangle on the color wheel.



67.8173, 67.7712, 73.1251



66.4058, 67.7712, 66.2935



61.1275, 67.7712, 74.4616



62.4634, 67.7712, 81.8342

Sweetspot

The Sweet Spot groups the original color and five complimentary colors.



67.8192, 67.7742, 73.1266



91.6879, 94.8278, 102.9946



68.6957, 67.9782, 84.3642



19.4373, 20.0086, 21.7144



0.0000, 0.0000, 0.0000



20.3446, 21.4041, 23.3091

Same Dimension

The Same Dimension uses a secret algorithm to generate beautiful new colors.



67.8192, 67.7742, 73.1266



84.3349, 83.5506, 89.9735



68.8240, 70.5905, 70.9742



14.4942, 14.4149, 15.5367



18.7885, 9.6496, 2.5152



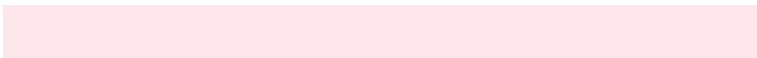
1.4211, 0.7261, 0.3579

Inverse Universe

The Inverse Universe completely reimagines the original color for something new.



67.8192, 67.7742, 73.1266



84.3349, 83.5506, 89.9735



67.5193, 72.7283, 85.3431



14.4942, 14.4149, 15.5367



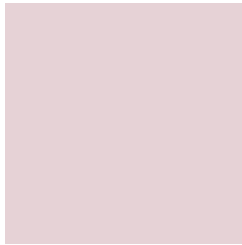
18.7885, 9.6496, 2.5152



1.4211, 0.7261, 0.3579

Previews

White Background



This preview shows how the XYZ color 67.8173, 67.7712, 73.1251 looks on a white background.

Color Contrast Check

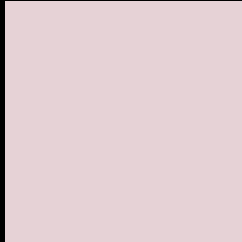
Large Text (above 18pt) WCAG AA × Fail

Any Text WCAG AA × Fail

Large Text (above 18pt) WCAG AAA × Fail

Any Text WCAG AAA × Fail

Black Background



This preview shows how the XYZ color 67.8173, 67.7712, 73.1251 looks on a black background.

Color Contrast Check

Large Text (above 18pt) WCAG AA ✓ Pass

Any Text WCAG AA ✓ Pass

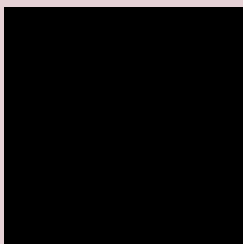
Large Text (above 18pt) WCAG AAA ✓ Pass

Any Text WCAG AAA ✓ Pass

If you want to check with other color combinations, try the [Color Contrast Checker](#).

XYZ 67.8173, 67.7712, 73.1251

Background



This preview shows how black text looks on a background with the XYZ color 67.8173, 67.7712, 73.1251.

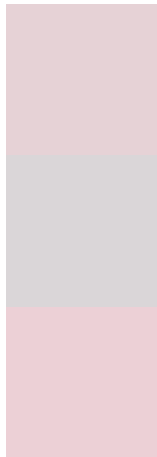


This preview shows how white text looks on a background with the XYZ color 67.8173, 67.7712,

Color Blindness Simulation

Color vision deficiency is a very complex topic, and I could not describe the different causes any better than Wikipedia does, so if you want to learn more, you should check out their [article about color blindness](#).

Dichromacy



Original Color

67.8173, 67.7712, 73.1251

Protanopia

65.3547, 67.9564, 74.6381

Deuteranopia

69.2855, 67.7997, 73.0532



Tritanopia

69.4252, 67.7038, 80.6432

Trichromacy



Original Color

67.8173, 67.7712, 73.1251

Protanomaly

66.1842, 68.0244, 73.9317

Deuteranomaly

68.8697, 67.9484, 73.1039

Tritanomaly

68.8066, 67.8103, 77.8688

Monochromacy



Original Color

67.8173, 67.7712, 73.1251

Achromatopsia

65.2694, 68.6685, 74.7800

Achromatomaly

66.1311, 68.3716, 74.0015

CSS Examples

Text

The CSS property to change the color of the text to XYZ 67.8173, 67.7712, 73.1251 is called "color". The color property can be set on classes, ids or directly on the HTML element.

This example shows how text in the color rgb(230, 210, 214) looks like.

```
.text, #text, p{  
    color:rgb(230, 210, 214)  
}
```

If you want to add a text shadow in that color use the text-shadow property, you can generate a text shadow directly with our [CSS Text Shadow Generator](#).

Here you see how black text with a 4 pixel rgb(230, 210, 214) colored shadow looks like.

```
.shadow{ text-shadow: 4px 4px 2px rgb(230, 210, 214) }
```

Border

The CSS property to change the border of an element to XYZ 67.8173, 67.7712, 73.1251 is called "border". The border property can be set on classes, ids or directly on the HTML element.

This example shows the color as border, it can be applied via the CSS property "border" or "border-color".

```
.border, #border, table{ border:4px solid rgb(230, 210, 214) }
```


If only the border color should be changed use the property `border-color`.

```
.border{ border-color:rgb(230, 210, 214) }
```

If you want to add a box shadow in that color use:

Here you see how a box with a 4 pixel `rgb(230, 210, 214)` colored shadow looks like.

```
.boxshadow{ -moz-box-shadow:4px 4px 4px  
4px rgb(230, 210, 214); -webkit-box-  
shadow:4px 4px 4px 4px rgb(230, 210, 214);  
box-shadow:4px 4px 4px 4px rgb(230, 210,  
214) }
```

Background

The CSS property to change the background color of an element to XYZ 67.8173, 67.7712, 73.1251 is called "background". The background property can be set on classes, ids or directly on the HTML element.

```
.background, #background, body{  
background: rgb(230, 210, 214) }
```

If only the background color should be changed can be used:

```
.background{ background-color: rgb(230,  
210, 214) }
```

This example shows the color as background, it is applied via the CSS property "background".

To optimize and compress your CSS code, you can use our [online CSS compressor and optimizer](#) based on csstidy. If you want to create a linear or radial gradient as background or border, check our [CSS Gradient Generator](#).

Hey! You found this booklet interesting? Support Converting Colors with the new Membership Option!

The pro membership hides all ads, plus gives you double the colors in the color bucket, and more awesome pro features!

[Learn more, Memberships starting at \\$2.50/m!](#)

**Follow me
on Twitter!**

@ConvertingColor