

Converting Colors

XYZ(68.0423, 69.0795, 75.2725)

Have a look what the booklet for
XYZ(68.0423, 69.0795, 75.2725)
contains.

XYZ(67.9972, 68.9291, 75.3665)	3
<i>Conversions</i>	4
<i>Details</i>	6
<i>Harmonies</i>	12
<i>Previews</i>	24
<i>Color Blindness Simulation</i>	28
<i>CSS Examples</i>	31

Color

**XYZ(67.9972, 68.9291,
75.3665)**

Conversions

Conversions Part 1

Format	Color
Hex	E3D5D9
RGB	227, 213, 217
RGB Percent	89%, 84%, 85%
CMY	0.1098, 0.1647, 0.1490
CMYK	0.00, 0.06, 0.04, 0.11
HSL	343°, 20%, 86%
HSV	343°, 6%, 89%
XYZ	67.9972, 68.9291, 75.3665
YIQ	217.6420, 7.0600, 4.2120

Conversions

Conversions Part 2

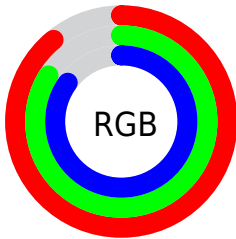
Format	Color
RYP	227, 213, 217
Decimal	14931417
CIELab	86.47, 5.51, -0.25
CIElCh	86, 5.514, 357.439
Yxy	68.9291, 0.3203, 0.3247
Android (android.graphics.Color)	4293121497 (0xFFE3D5D9)
YUV	217.6420, -0.3165, 8.2070
Hunter-Lab	83.0236, 0.9022, 4.2947

Details

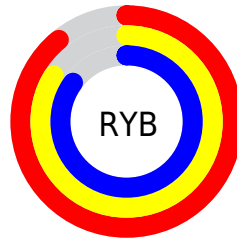
The XYZ color **67.9972, 68.9291, 75.3665** is a light color, and the websafe version is hex **CCCCCC**. A complement of this color would be **68.2315, 74.4138, 80.5828**, and the grayscale version is **66.3944, 69.8521, 76.0689**.

A 20% lighter version of the original color is **95.0500, 100.0000, 108.9000**, and **35.7617, 35.8330, 39.2140** is the 20% darker color. If you saturate the color by 10%, you get **60.6757, 57.4972, 63.0247**, and if you desaturate by 10%, it is **76.3291, 82.0483, 89.0697**.

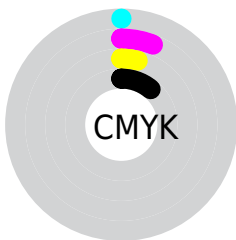
Distribution



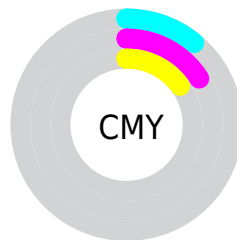
- Red (89%)
- Green (84%)
- Blue (85%)



- Red (89%)
- Yellow (84%)
- Blue (85%)



- Cyan (0%)
- Magenta (6%)
- Yellow (4%)
- Black (11%)



- Cyan (11%)
- Magenta (16%)
- Yellow (15%)

Brightness & Saturation Gradients

These gradients show how the XYZ color 67.9972, 68.9291, 75.3665 changes by changing the brightness by 10 percent. The first figure shows a shift by +10% for each color and the second figure -10%.

Similar to the brightness gradients but the following saturation gradients show a change of the XYZ color 67.9972, 68.9291, 75.3665 by changing the saturation by 10% instead.

67.9972, 68.9291,
75.3665

67.9972, 68.9291,
75.3665

442.8630,
456.7809, 498.4653

50.1691, 50.6540,
55.4097

115.3901,
117.6803, 128.5829

35.7661, 35.9333,
39.3290

145.6856,
148.9252, 162.6795

24.4229, 24.3827,
26.7060

180.8676,
185.2621, 202.3265

15.7741, 15.6177,
17.1220

221.3015,
227.0754, 247.9423

9.4542, 9.2541,
10.1587

267.3526,
274.7495, 299.9456

5.0981, 4.9073,
5.3973

319.3864,

2.3403, 2.1930,

328.6689, 358.7548

2.4194

377.7680,
389.2179, 424.7885

■ 0.8152, 0.7162,
0.7970

■ 0.0000, 0.0000,
0.0000

■ 67.9972, 68.9291,
75.3665

■ 67.9972, 68.9291,
75.3665

■ 60.6757, 57.4972,
63.0247

■ 76.3291, 82.0483,
89.0697

■ 54.3198, 47.6752,
51.9975

■ 84.6064, 94.7181,
103.8049

■ 48.8900, 39.3929,
42.2417

■ 85.4890, 95.0711,
108.4526

■ 44.3416, 32.5717,
33.7103

■ 40.6262, 27.1257,
26.3530

■ 37.6906, 22.9601,
20.1160

■ 35.4749, 19.9679,
14.9408

■ 33.9102, 18.0246,
10.7629

■ 32.9119, 16.9754,
7.5089

Harmonies

Analogous

The Analogous color harmony consists of three colors that are next to each other on the color wheel.



67.6051, 68.9291, 78.8983



67.9972, 68.9291, 75.3665



67.7171, 68.9291, 71.8600

Triad

The Triadic color harmony groups three colors that are evenly spaced from another and form a triangle on the color wheel.



67.9972, 68.9291, 75.3665



64.3908, 68.9291, 68.9861



64.2032, 68.9291, 81.1324

Complementary

The Complementary color scheme is a pair of colors which are on the opposite of each other on the color wheel.



67.9972, 68.9291, 75.3665



68.2315, 74.4138, 80.5828

Split Complementary

Split-complementary colors differ from the complementary color scheme. The scheme consists of three colors, the original color and two neighbors of the complement color.



63.3612, 68.9291, 78.3373



67.9972, 68.9291, 75.3665



63.4685, 68.9291, 71.3329

Square

The Square scheme is like the rectangle color scheme, but the four colors are evenly spaced on the color wheel.



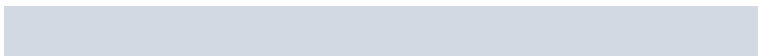
67.9972, 68.9291, 75.3665



65.6247, 68.9291, 68.2479



63.0940, 68.9291, 74.7385



65.4055, 68.9291, 82.2941

Rectangle

The Rectangle color scheme consists of four colors that form a rectangle on the color wheel.



67.9972, 68.9291, 75.3665



67.1888, 68.9291, 69.9938



63.0940, 68.9291, 74.7385



63.8693, 68.9291, 80.3484

Sweetspot

The Sweet Spot groups the original color and five complimentary colors.



67.9992, 68.9321, 75.3680



92.8633, 96.5566, 105.3043



68.0315, 68.7939, 82.3670



19.8995, 20.7031, 22.5772



0.0000, 0.0000, 0.0000



20.3446, 21.4041, 23.3091

Same Dimension

The Same Dimension uses a secret algorithm to generate beautiful new colors.



67.9992, 68.9321, 75.3680



87.6317, 88.3409, 96.6316



68.1957, 70.1471, 72.8997



14.8642, 14.9344, 16.3399



19.0719, 9.7630, 4.0074



1.4484, 0.7371, 0.5017

Inverse Universe

The Inverse Universe completely reimagines the original color for something new.



67.9992, 68.9321, 75.3680



87.6317, 88.3409, 96.6316



68.0174, 73.1131, 83.2014



14.8642, 14.9344, 16.3399



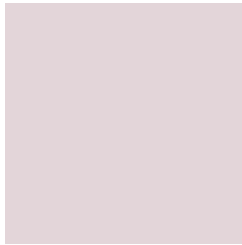
19.0719, 9.7630, 4.0074



1.4484, 0.7371, 0.5017

Previews

White Background



This preview shows how the XYZ color 67.9972, 68.9291, 75.3665 looks on a white background.

Color Contrast Check

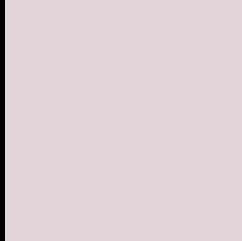
Large Text (above 18pt) WCAG AA × Fail

Any Text WCAG AA × Fail

Large Text (above 18pt) WCAG AAA × Fail

Any Text WCAG AAA × Fail

Black Background



This preview shows how the XYZ color 67.9972, 68.9291, 75.3665 looks on a black background.

Color Contrast Check

Large Text (above 18pt) WCAG AA ✓ Pass

Any Text WCAG AA ✓ Pass

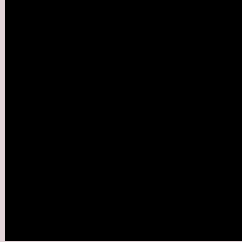
Large Text (above 18pt) WCAG AAA ✓ Pass

Any Text WCAG AAA ✓ Pass

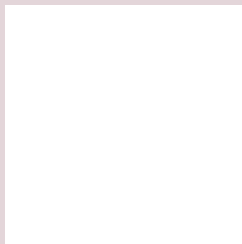
If you want to check with other color combinations, try the [Color Contrast Checker](#).

XYZ 67.9972, 68.9291, 75.3665

Background



This preview shows how black text looks on a background with the XYZ color 67.9972, 68.9291, 75.3665.



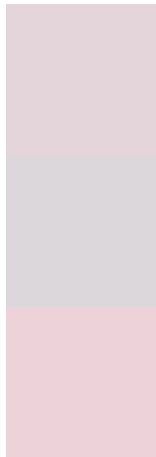
This preview shows how white text looks on a background with the XYZ color 67.9972, 68.9291,

75.3665.

Color Blindness Simulation

Color vision deficiency is a very complex topic, and I could not describe the different causes any better than Wikipedia does, so if you want to learn more, you should check out their [article about color blindness](#).

Dichromacy



Original Color

67.9972, 68.9291, 75.3665

Protanopia

66.4705, 68.8785, 76.1212

Deuteranopia

70.6265, 69.1597, 75.9564



Tritanopia

69.6110, 68.8480, 83.0189

Trichromacy



Original Color

67.9972, 68.9291, 75.3665

Protanomaly

67.1329, 68.8431, 76.0794

Deuteranomaly

69.5534, 68.9741, 75.9771

Tritanomaly

68.9929, 68.9628, 80.1958

Monochromacy



Original Color

67.9972, 68.9291, 75.3665

Achromatopsia

66.6397, 70.1102, 76.3500

Achromatomaly

67.0295, 69.5458, 76.2205

CSS Examples

Text

The CSS property to change the color of the text to XYZ 67.9972, 68.9291, 75.3665 is called "color". The color property can be set on classes, ids or directly on the HTML element.

This example shows how text in the color rgb(227, 213, 217) looks like.

```
.text, #text, p{  
    color:rgb(227, 213, 217)  
}
```

If you want to add a text shadow in that color use the text-shadow property, you can generate a text shadow directly with our [CSS Text Shadow Generator](#).

Here you see how black text with a 4 pixel rgb(227, 213, 217) colored shadow looks like.

```
.shadow{ text-shadow: 4px 4px 2px rgb(227, 213, 217) }
```

Border

The CSS property to change the border of an element to XYZ 67.9972, 68.9291, 75.3665 is called "border". The border property can be set on classes, ids or directly on the HTML element.

This example shows the color as border, it can be applied via the CSS property "border" or "border-color".

```
.border, #border, table{ border:4px solid rgb(227, 213, 217) }
```


If only the border color should be changed use the property border-color.

```
.border{ border-color:rgb(227, 213, 217) }
```

If you want to add a box shadow in that color use:

Here you see how a box with a 4 pixel rgb(227, 213, 217) colored shadow looks like.

```
.boxshadow{ -moz-box-shadow:4px 4px 4px  
4px rgb(227, 213, 217); -webkit-box-  
shadow:4px 4px 4px 4px rgb(227, 213, 217);  
box-shadow:4px 4px 4px 4px rgb(227, 213,  
217) }
```

Background

The CSS property to change the background color of an element to XYZ 67.9972, 68.9291, 75.3665 is called "background". The background property can be set on classes, ids or directly on the HTML element.

```
.background, #background, body{  
background: rgb(227, 213, 217) }
```

If only the background color should be changed can be used:

```
.background{ background-color: rgb(227,  
213, 217) }
```

This example shows the color as background, it is applied via the CSS property "background".

To optimize and compress your CSS code, you can use our [online CSS compressor and optimizer](#) based on csstidy. If you want to create a linear or radial gradient as background or border, check our [CSS Gradient Generator](#).

Hey! You found this booklet interesting? Support Converting Colors with the new Membership Option!

The pro membership hides all ads, plus gives you double the colors in the color bucket, and more awesome pro features!

[Learn more, Memberships starting at \\$2.50/m!](#)

**Follow me
on Twitter!**

@ConvertingColor