

Converting Colors

XYZ(68.1203, 67.4193, 76.9585)

Have a look what the booklet for
XYZ(68.1203, 67.4193, 76.9585)
contains.

XYZ(68.3519, 67.5912, 77.1540)	3
<i>Conversions</i>	4
<i>Details</i>	6
<i>Harmonies</i>	12
<i>Previews</i>	24
<i>Color Blindness Simulation</i>	28
<i>CSS Examples</i>	31

Color

**XYZ(68.3519, 67.5912,
77.1540)**

Conversions

Conversions Part 1

Format	Color
Hex	E6D1DC
RGB	230, 209, 220
RGB Percent	90%, 82%, 86%
CMY	0.0980, 0.1804, 0.1372
CMYK	0.00, 0.09, 0.04, 0.10
HSL	329°, 30%, 86%
HSV	329°, 9%, 90%
XYZ	68.3519, 67.5912, 77.1540
YIQ	216.5330, 8.9850, 7.8730

Conversions

Conversions Part 2

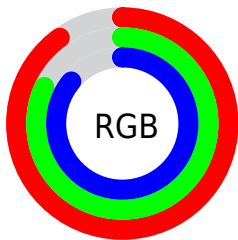
Format	Color
R _Y B	230, 209, 220
Decimal	15127004
CIE Lab	85.80, 9.16, -2.78
CIE LCh	86, 9.575, 343.093
Yxy	67.5912, 0.3208, 0.3172
Android (android.graphics.Color)	4293317084 (0xFFE6D1DC)
YUV	216.5330, 1.7092, 11.8106
Hunter-Lab	82.2139, 4.5291, 1.9087

Details

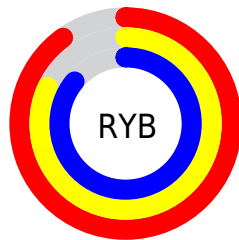
The XYZ color **68.3519, 67.5912, 77.1540** is a light color, and the websafe version is hex **CCCCCC**. A complement of this color would be **67.3801, 75.2653, 77.9979**, and the grayscale version is **65.6198, 69.0372, 75.1815**.

A 20% lighter version of the original color is **95.0500, 100.0000, 108.9000**, and **35.9684, 35.1580, 40.4877** is the 20% darker color. If you saturate the color by 10%, you get **61.7080, 56.5490, 68.0147**, and if you desaturate by 10%, it is **75.9093, 80.3066, 87.0686**.

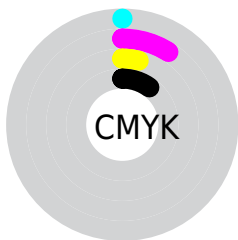
Distribution



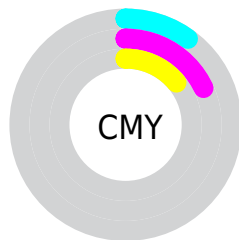
- Red (90%)
- Green (82%)
- Blue (86%)



- Red (90%)
- Yellow (82%)
- Blue (86%)



- Cyan (0%)
- Magenta (9%)
- Yellow (4%)
- Black (10%)



- Cyan (10%)
- Magenta (18%)
- Yellow (14%)

Brightness & Saturation Gradients

These gradients show how the XYZ color 68.3519, 67.5912, 77.1540 changes by changing the brightness by 10 percent. The first figure shows a shift by +10% for each color and the second figure -10%.

Similar to the brightness gradients but the following saturation gradients show a change of the XYZ color 68.3519, 67.5912, 77.1540 by changing the saturation by 10% instead.

68.3519, 67.5912,
77.1540

68.3519, 67.5912,
77.1540

444.0990,
452.0463, 504.7405

50.4588, 49.5652,
56.8670

115.8946,
115.7671, 131.1318

35.9974, 35.0681,
40.4898

146.2748,
146.6859, 165.6597

24.6023, 23.7153,
27.6039

181.5482,
182.6710, 205.7716

15.9081, 15.1226,
17.7909

222.0800,
224.1069, 251.8861

9.5496, 8.9055,
10.6321

268.2357,
271.3780, 304.4217

5.1613, 4.6796,
5.7090

320.3805,

2.3780, 2.0605,

324.8687, 363.7969

2.6030

378.8798,
384.9633, 430.4304

■ 0.8341, 0.6423,
0.8940

■ 0.0000, 0.0000,
0.0000

■ 68.3519, 67.5912,
77.1540

■ 68.3519, 67.5912,
77.1540

■ 61.7080, 56.5490,
68.0147

■ 75.9093, 80.3066,
87.0686

■ 55.9354, 47.1009,
59.6252

■ 84.4072, 94.7487,
97.7735

■ 50.9968, 39.1746,
51.9647

■ 86.1017, 95.4265,
106.6970

■ 46.8501, 32.6888,
45.0097

■ 86.4436, 95.5632,
108.4972

■ 43.4491, 27.5544,
38.7350

■ 40.7427, 23.6725,
33.1135

■ 38.6729, 20.9304,
28.1153

■ 37.1712, 19.1946,
23.7067

■ 36.1318, 18.2573,
19.8410

Harmonies

Analogous

The Analogous color harmony consists of three colors that are next to each other on the color wheel.



67.1597, 67.5912, 82.7460



68.3519, 67.5912, 77.1540



68.4274, 67.5912, 70.9004

Triad

The Triadic color harmony groups three colors that are evenly spaced from another and form a triangle on the color wheel.



68.3519, 67.5912, 77.1540



63.2954, 67.5912, 62.4761



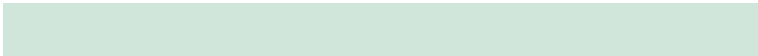
61.2209, 67.5912, 82.1346

Complementary

The Complementary color scheme is a pair of colors which are on the opposite of each other on the color wheel.



68.3519, 67.5912, 77.1540



67.3801, 75.2653, 77.9979

Split Complementary

Split-complementary colors differ from the complementary color scheme. The scheme consists of three colors, the original color and two neighbors of the complement color.



60.2335, 67.5912, 76.3577



68.3519, 67.5912, 77.1540



61.4128, 67.5912, 65.1455

Square

The Square scheme is like the rectangle color scheme, but the four colors are evenly spaced on the color wheel.



68.3519, 67.5912, 77.1540



65.4743, 67.5912, 62.6622



60.3029, 67.5912, 70.1478



63.0281, 67.5912, 85.7314

Rectangle

The Rectangle color scheme consists of four colors that form a rectangle on the color wheel.



68.3519, 67.5912, 77.1540



67.8317, 67.5912, 67.2128



60.3029, 67.5912, 70.1478



60.7840, 67.5912, 80.3696

Sweetspot

The Sweet Spot groups the original color and five complimentary colors.



68.3538, 67.5941, 77.1555



92.0767, 94.9833, 105.0423



66.2392, 66.3464, 84.1790



19.5420, 20.0505, 22.2660



0.0000, 0.0000, 0.0000



20.3446, 21.4041, 23.3091

Same Dimension

The Same Dimension uses a secret algorithm to generate beautiful new colors.



68.3538, 67.5941, 77.1555



84.6684, 82.5600, 95.1946



67.0315, 67.0652, 70.1923



14.6907, 14.4935, 16.5717



20.4723, 10.3231, 11.3822



1.5597, 0.7816, 1.0880

Inverse Universe

The Inverse Universe completely reimagines the original color for something new.



68.3538, 67.5941, 77.1555



84.6684, 82.5600, 95.1946



68.7783, 75.8246, 85.3604



14.6907, 14.4935, 16.5717



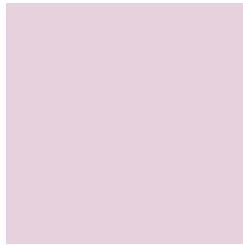
20.4723, 10.3231, 11.3822



1.5597, 0.7816, 1.0880

Previews

White Background



This preview shows how the XYZ color 68.3519, 67.5912, 77.1540 looks on a white background.

Color Contrast Check

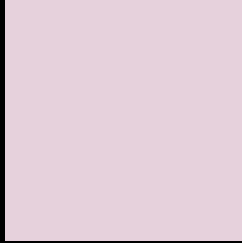
Large Text (above 18pt) WCAG AA × Fail

Any Text WCAG AA × Fail

Large Text (above 18pt) WCAG AAA × Fail

Any Text WCAG AAA × Fail

Black Background



This preview shows how the XYZ color 68.3519, 67.5912, 77.1540 looks on a black background.

Color Contrast Check

Large Text (above 18pt) WCAG AA ✓ Pass

Any Text WCAG AA ✓ Pass

Large Text (above 18pt) WCAG AAA ✓ Pass

Any Text WCAG AAA ✓ Pass

If you want to check with other color combinations, try the [Color Contrast Checker](#).

XYZ 68.3519, 67.5912, 77.1540

Background



This preview shows how black text looks on a background with the XYZ color 68.3519, 67.5912, 77.1540.



This preview shows how white text looks on a background with the XYZ color 68.3519, 67.5912,

Color Blindness Simulation

Color vision deficiency is a very complex topic, and I could not describe the different causes any better than Wikipedia does, so if you want to learn more, you should check out their [article about color blindness](#).

Dichromacy



Original Color

68.3519, 67.5912, 77.1540

Protanopia

65.4324, 67.5151, 79.3951

Deuteranopia

69.0784, 67.6027, 77.1179



Tritanopia

69.1015, 67.5369, 80.6281

Trichromacy



Original Color

68.3519, 67.5912, 77.1540

Protanomaly

66.5471, 67.7330, 78.6736

Deuteranomaly

68.7529, 67.4349, 77.1027

Tritanomaly

68.8302, 67.4284, 79.1993

Monochromacy



Original Color

68.3519, 67.5912, 77.1540

Achromatopsia

65.9525, 69.3872, 75.5626

Achromatomaly

66.8257, 68.6847, 76.0650

CSS Examples

Text

The CSS property to change the color of the text to XYZ 68.3519, 67.5912, 77.1540 is called "color". The color property can be set on classes, ids or directly on the HTML element.

This example shows how text in the color rgb(230, 209, 220) looks like.

```
.text, #text, p{  
    color:rgb(230, 209, 220)  
}
```

If you want to add a text shadow in that color use the text-shadow property, you can generate a text shadow directly with our [CSS Text Shadow Generator](#).

Here you see how black text with a 4 pixel rgb(230, 209, 220) colored shadow looks like.

```
.shadow{ text-shadow: 4px 4px 2px rgb(230, 209, 220) }
```

Border

The CSS property to change the border of an element to XYZ 68.3519, 67.5912, 77.1540 is called "border". The border property can be set on classes, ids or directly on the HTML element.

This example shows the color as border, it can be applied via the CSS property "border" or "border-color".

```
.border, #border, table{ border:4px solid rgb(230, 209, 220) }
```


If only the border color should be changed use the property `border-color`.

```
.border{ border-color:rgb(230, 209, 220) }
```

If you want to add a box shadow in that color use:

Here you see how a box with a 4 pixel `rgb(230, 209, 220)` colored shadow looks like.

```
.boxshadow{ -moz-box-shadow:4px 4px 4px  
4px rgb(230, 209, 220); -webkit-box-  
shadow:4px 4px 4px 4px rgb(230, 209, 220);  
box-shadow:4px 4px 4px 4px rgb(230, 209,  
220) }
```

Background

The CSS property to change the background color of an element to XYZ 68.3519, 67.5912, 77.1540 is called "background". The background property can be set on classes, ids or directly on the HTML element.

```
.background, #background, body{  
background: rgb(230, 209, 220) }
```

If only the background color should be changed can be used:

```
.background{ background-color: rgb(230,  
209, 220) }
```

This example shows the color as background, it is applied via the CSS property "background".

To optimize and compress your CSS code, you can use our [online CSS compressor and optimizer](#) based on csstidy. If you want to create a linear or radial gradient as background or border, check our [CSS Gradient Generator](#).

Hey! You found this booklet interesting? Support Converting Colors with the new Membership Option!

The pro membership hides all ads, plus gives you double the colors in the color bucket, and more awesome pro features!

[Learn more, Memberships starting at \\$2.50/m!](#)

**Follow me
on Twitter!**

@ConvertingColor