

Converting Colors

XYZ(68.2473, 67.6548, 73.1045)

Have a look what the booklet for
XYZ(68.2473, 67.6548, 73.1045)
contains.

XYZ(68.2168, 67.6118, 73.0733)	3
<i>Conversions</i>	4
<i>Details</i>	6
<i>Harmonies</i>	12
<i>Previews</i>	24
<i>Color Blindness Simulation</i>	28
<i>CSS Examples</i>	31

Color

**XYZ(68.2168, 67.6118,
73.0733)**

Conversions

Conversions Part 1

Format	Color
Hex	E8D1D6
RGB	232, 209, 214
RGB Percent	91%, 82%, 84%
CMY	0.0902, 0.1804, 0.1608
CMYK	0.00, 0.10, 0.08, 0.09
HSL	347°, 33%, 86%
HSV	347°, 10%, 91%
XYZ	68.2168, 67.6118, 73.0733
YIQ	216.4470, 12.1030, 6.4310

Conversions

Conversions Part 2

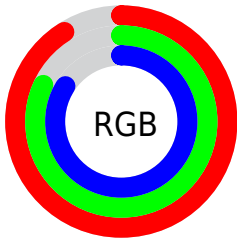
Format	Color
R _Y B	232, 209, 214
Decimal	15258070
CIE Lab	85.81, 8.82, 0.43
CIE LCh	86, 8.832, 2.815
Yxy	67.6118, 0.3265, 0.3237
Android (android.graphics.Color)	4293448150 (0xFFE8D1D6)
YUV	216.4470, -1.2064, 13.6400
Hunter-Lab	82.2264, 4.1913, 4.8684

Details

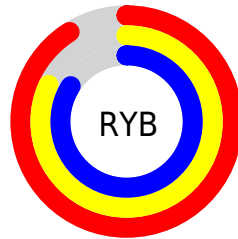
The XYZ color **68.2168, 67.6118, 73.0733** is a light color, and the websafe version is hex **CCCCCC**. A complement of this color would be **69.0189, 76.8164, 83.8662**, and the grayscale version is **65.5789, 68.9941, 75.1346**.

A 20% lighter version of the original color is **95.0500, 100.0000, 108.9000**, and **35.8838, 35.1760, 37.6993** is the 20% darker color. If you saturate the color by 10%, you get **60.7428, 56.1702, 59.7706**, and if you desaturate by 10%, it is **76.7820, 80.8205, 88.0171**.

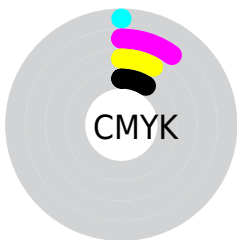
Distribution



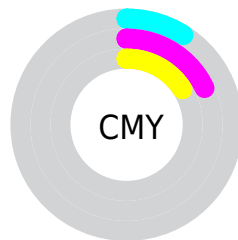
- Red (91%)
- Green (82%)
- Blue (84%)



- Red (91%)
- Yellow (82%)
- Blue (84%)



- Cyan (0%)
- Magenta (10%)
- Yellow (8%)
- Black (9%)



- Cyan (9%)
- Magenta (18%)
- Yellow (16%)

Brightness & Saturation Gradients

These gradients show how the XYZ color 68.2168, 67.6118, 73.0733 changes by changing the brightness by 10 percent. The first figure shows a shift by +10% for each color and the second figure -10%.

Similar to the brightness gradients but the following saturation gradients show a change of the XYZ color 68.2168, 67.6118, 73.0733 by changing the saturation by 10% instead.

68.2168, 67.6118,
73.0733

68.2168, 67.6118,
73.0733

443.6285,
452.1194, 490.3464

50.3485, 49.5820,
53.5437

115.7024,
115.7966, 125.3031

35.9093, 35.0814,
37.8463

146.0504,
146.7204, 158.8405

24.5339, 23.7256,
25.5625

181.2891,
182.7110, 197.8842

15.8570, 15.1302,
16.2738

221.7836,
224.1527, 242.8527

9.5132, 8.9108,
9.5617

267.8995,
271.4301, 294.1647

5.1372, 4.6830,
5.0075

320.0020,

2.3636, 2.0625,

324.9273, 352.2386

2.1929

378.4565,
385.0290, 417.4930

■ 0.8269, 0.6434,
0.6702

■ 0.0000, 0.0000,
0.0000

■ 68.2168, 67.6118,
73.0733

■ 68.2168, 67.6118,
73.0733

■ 60.7428, 56.1702,
59.7706

■ 76.7820, 80.8205,
88.0171

■ 54.3103, 46.4120,
48.0482

■ 86.3448, 95.5983,
104.6081

■ 48.8739, 38.2602,
37.8479

■ 87.0891, 95.8960,
108.5274

■ 44.3829, 31.6280,
29.1065

■ 40.7817, 26.4207,
21.7557

■ 38.0091, 22.5327,
15.7221

■ 35.9954, 19.8438,
10.9248

■ 34.6592, 18.2112,
7.2736

■ 33.8693, 17.3956,
4.6543

Harmonies

Analogous

The Analogous color harmony consists of three colors that are next to each other on the color wheel.



67.7766, 67.6118, 78.8121



68.2168, 67.6118, 73.0733



67.5793, 67.6118, 67.7584

Triad

The Triadic color harmony groups three colors that are evenly spaced from another and form a triangle on the color wheel.



68.2168, 67.6118, 73.0733



62.1831, 67.6118, 64.6681



62.5066, 67.6118, 83.9515

Complementary

The Complementary color scheme is a pair of colors which are on the opposite of each other on the color wheel.



68.2168, 67.6118, 73.0733



69.0189, 76.8164, 83.8662

Split Complementary

Split-complementary colors differ from the complementary color scheme. The scheme consists of three colors, the original color and two neighbors of the complement color.



61.0569, 67.6118, 79.8055



68.2168, 67.6118, 73.0733



60.8729, 67.6118, 68.6568

Square

The Square scheme is like the rectangle color scheme, but the four colors are evenly spaced on the color wheel.



68.2168, 67.6118, 73.0733



64.0726, 67.6118, 63.0674



60.4650, 67.6118, 74.1649



64.4538, 67.6118, 85.2837

Rectangle

The Rectangle color scheme consists of four colors that form a rectangle on the color wheel.



68.2168, 67.6118, 73.0733



66.6367, 67.6118, 65.1149



60.4650, 67.6118, 74.1649



61.9463, 67.6118, 82.8304

Sweetspot

The Sweet Spot groups the original color and five complimentary colors.



68.2187, 67.6148, 73.0747



91.7087, 94.8361, 103.1040



68.9312, 67.7016, 85.7795



19.4429, 20.0108, 21.7438



0.0000, 0.0000, 0.0000



20.3446, 21.4041, 23.3091

Same Dimension

The Same Dimension uses a secret algorithm to generate beautiful new colors.



68.2187, 67.6148, 73.0747



82.4339, 80.5588, 86.8415



69.1239, 70.4308, 70.2765



14.5045, 14.4190, 15.5912



18.8376, 9.6693, 2.7739



1.4261, 0.7282, 0.3844

Inverse Universe

The Inverse Universe completely reimagines the original color for something new.



68.2187, 67.6148, 73.0747



82.4339, 80.5588, 86.8415



68.0225, 73.7039, 86.9859



14.5045, 14.4190, 15.5912



18.8376, 9.6693, 2.7739



1.4261, 0.7282, 0.3844

Previews

White Background



This preview shows how the XYZ color 68.2168, 67.6118, 73.0733 looks on a white background.

Color Contrast Check

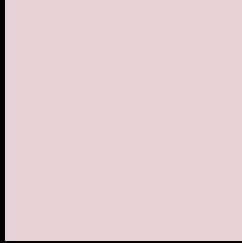
Large Text (above 18pt) WCAG AA × Fail

Any Text WCAG AA × Fail

Large Text (above 18pt) WCAG AAA × Fail

Any Text WCAG AAA × Fail

Black Background



This preview shows how the XYZ color 68.2168, 67.6118, 73.0733 looks on a black background.

Color Contrast Check

Large Text (above 18pt) WCAG AA ✓ Pass

Any Text WCAG AA ✓ Pass

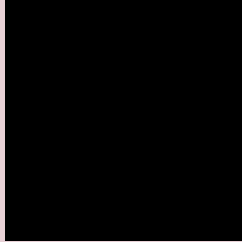
Large Text (above 18pt) WCAG AAA ✓ Pass

Any Text WCAG AAA ✓ Pass

If you want to check with other color combinations, try the [Color Contrast Checker](#).

XYZ 68.2168, 67.6118, 73.0733

Background



This preview shows how black text looks on a background with the XYZ color 68.2168, 67.6118, 73.0733.

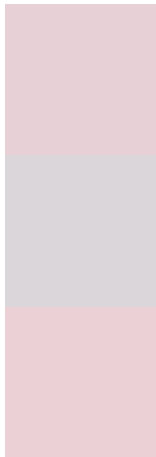


This preview shows how white text looks on a background with the XYZ color 68.2168, 67.6118,

Color Blindness Simulation

Color vision deficiency is a very complex topic, and I could not describe the different causes any better than Wikipedia does, so if you want to learn more, you should check out their [article about color blindness](#).

Dichromacy



Original Color

68.2168, 67.6118, 73.0733

Protanopia

65.4844, 68.0083, 75.3212

Deuteranopia

68.9544, 67.6290, 73.0377



Tritanopia

69.3716, 67.3311, 79.8609

Trichromacy



Original Color

68.2168, 67.6118, 73.0733

Protanomaly

66.3696, 67.7328, 74.5414

Deuteranomaly

68.6252, 67.4592, 73.0223

Tritanomaly

69.0784, 67.6027, 77.1179

Monochromacy



Original Color

68.2168, 67.6118, 73.0733

Achromatopsia

65.2694, 68.6685, 74.7800

Achromatomaly

66.1842, 68.0244, 73.9317

CSS Examples

Text

The CSS property to change the color of the text to XYZ 68.2168, 67.6118, 73.0733 is called "color". The color property can be set on classes, ids or directly on the HTML element.

This example shows how text in the color `rgb(232, 209, 214)` looks like.

```
.text, #text, p{  
    color:rgb(232, 209, 214)  
}
```

If you want to add a text shadow in that color use the text-shadow property, you can generate a text shadow directly with our [CSS Text Shadow Generator](#).

Here you see how black text with a 4 pixel rgb(232, 209, 214) colored shadow looks like.

```
.shadow{ text-shadow: 4px 4px 2px rgb(232, 209, 214) }
```

Border

The CSS property to change the border of an element to XYZ 68.2168, 67.6118, 73.0733 is called "border". The border property can be set on classes, ids or directly on the HTML element.

This example shows the color as border, it can be applied via the CSS property "border" or "border-color".

```
.border, #border, table{ border:4px solid rgb(232, 209, 214) }
```


If only the border color should be changed use the property `border-color`.

```
.border{ border-color:rgb(232, 209, 214) }
```

If you want to add a box shadow in that color use:

Here you see how a box with a 4 pixel `rgb(232, 209, 214)` colored shadow looks like.

```
.boxshadow{ -moz-box-shadow:4px 4px 4px  
4px rgb(232, 209, 214); -webkit-box-  
shadow:4px 4px 4px 4px rgb(232, 209, 214);  
box-shadow:4px 4px 4px 4px rgb(232, 209,  
214) }
```

Background

The CSS property to change the background color of an element to XYZ 68.2168, 67.6118, 73.0733 is called "background". The background property can be set on classes, ids or directly on the HTML element.

```
.background, #background, body{  
background: rgb(232, 209, 214) }
```

If only the background color should be changed can be used:

```
.background{ background-color: rgb(232,  
209, 214) }
```

This example shows the color as background, it is applied via the CSS property "background".

To optimize and compress your CSS code, you can use our [online CSS compressor and optimizer](#) based on csstidy. If you want to create a linear or radial gradient as background or border, check our [CSS Gradient Generator](#).

Hey! You found this booklet interesting? Support Converting Colors with the new Membership Option!

The pro membership hides all ads, plus gives you double the colors in the color bucket, and more awesome pro features!

[Learn more, Memberships starting at \\$2.50/m!](#)

**Follow me
on Twitter!**

@ConvertingColor