

Converting Colors

XYZ(68.2520, 66.2667, 73.2654)

Have a look what the booklet for
XYZ(68.2520, 66.2667, 73.2654)
contains.

XYZ(68.3580, 66.2311, 73.4710)	3
<i>Conversions</i>	4
<i>Details</i>	6
<i>Harmonies</i>	12
<i>Previews</i>	24
<i>Color Blindness Simulation</i>	28
<i>CSS Examples</i>	31

Color

**XYZ(68.3580, 66.2311,
73.4710)**

Conversions

Conversions Part 1

Format	Color
Hex	EBCDD7
RGB	235, 205, 215
RGB Percent	92%, 80%, 84%
CMY	0.0784, 0.1961, 0.1569
CMYK	0.00, 0.13, 0.09, 0.08
HSL	340°, 43%, 86%
HSV	340°, 13%, 92%
XYZ	68.3580, 66.2311, 73.4710
YIQ	215.1100, 14.6700, 9.4700

Conversions

Conversions Part 2

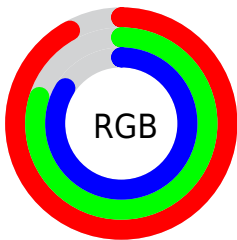
Format	Color
R _Y B	235, 205, 215
Decimal	15453655
CIE Lab	85.11, 12.14, -1.09
CIE LCh	85, 12.186, 354.885
Yxy	66.2311, 0.3285, 0.3183
Android (android.graphics.Color)	4293643735 (0xFFEBCDD7)
YUV	215.1100, -0.0542, 17.4435
Hunter-Lab	81.3825, 7.5134, 3.4415

Details

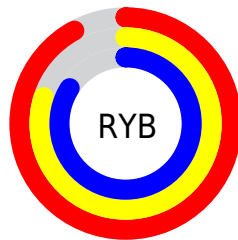
The XYZ color **68.3580, 66.2311, 73.4710** is a light color, and the websafe version is hex **FFCCCC**. A complement of this color would be **68.4783, 77.8337, 82.6521**, and the grayscale version is **64.6608, 68.0282, 74.0827**.

A 20% lighter version of the original color is **95.0500, 100.0000, 108.9000**, and **36.0022, 34.2550, 37.9721** is the 20% darker color. If you saturate the color by 10%, you get **61.2356, 55.0550, 61.6347**, and if you desaturate by 10%, it is **76.5213, 79.1787, 86.6072**.

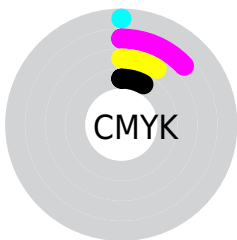
Distribution



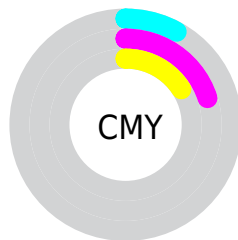
- Red (92%)
- Green (80%)
- Blue (84%)



- Red (92%)
- Yellow (80%)
- Blue (84%)



- Cyan (0%)
- Magenta (13%)
- Yellow (9%)
- Black (8%)



- Cyan (8%)
- Magenta (20%)
- Yellow (16%)

Brightness & Saturation Gradients

These gradients show how the XYZ color 68.3580, 66.2311, 73.4710 changes by changing the brightness by 10 percent. The first figure shows a shift by +10% for each color and the second figure -10%.

Similar to the brightness gradients but the following saturation gradients show a change of the XYZ color 68.3580, 66.2311, 73.4710 by changing the saturation by 10% instead.

68.3580, 66.2311,
73.4710

68.3580, 66.2311,
73.4710

444.1202,
447.2029, 491.7601

50.4638, 48.4600,
53.8670

115.9032,
113.8180, 125.8727

36.0013, 34.1913,
38.1029

146.2850,
144.4025, 159.5076

24.6053, 23.0406,
25.7601

181.5599,
180.0271, 198.6564

15.9104, 14.6235,
16.4201

222.0934,
221.0760, 243.7379

9.5512, 8.5556,
9.6644

268.2508,
267.9336, 295.1704

5.1624, 4.4525,
5.0743

320.3976,

2.3786, 1.9297,

320.9844, 353.3726

2.2314

378.8989,
380.6127, 418.7630

■ 0.8344, 0.5662,
0.6924

■ 0.0000, 0.0000,
0.0000

■ 68.3580, 66.2311,
73.4710

■ 68.3580, 66.2311,
73.4710

■ 61.2356, 55.0550,
61.6347

■ 76.5213, 79.1787,
86.6072

■ 55.1056, 45.5645,
51.0533

■ 85.7602, 93.9614,
101.0782

■ 49.9238, 37.6795,
41.6849

■ 88.0713, 96.4024,
108.5734

■ 45.6406, 31.3100,
33.4839

■ 42.2013, 26.3571,
26.4014

■ 39.5455, 22.7099,
20.3846

■ 37.6035, 20.2407,
15.3758

■ 36.2925, 18.7956,
11.3102

■ 35.6477, 18.2169,
8.9040

Harmonies

Analogous

The Analogous color harmony consists of three colors that are next to each other on the color wheel.



67.3697, 66.2311, 81.1678



68.3580, 66.2311, 73.4710



67.8634, 66.2311, 65.9359

Triad

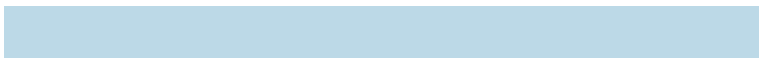
The Triadic color harmony groups three colors that are evenly spaced from another and form a triangle on the color wheel.



68.3580, 66.2311, 73.4710



60.7546, 66.2311, 59.2471



59.9618, 66.2311, 85.2059

Complementary

The Complementary color scheme is a pair of colors which are on the opposite of each other on the color wheel.



68.3580, 66.2311, 73.4710



68.4783, 77.8337, 82.6521

Split Complementary

Split-complementary colors differ from the complementary color scheme. The scheme consists of three colors, the original color and two neighbors of the complement color.



58.2809, 66.2311, 78.6673



68.3580, 66.2311, 73.4710



58.7292, 66.2311, 63.7606

Square

The Square scheme is like the rectangle color scheme, but the four colors are evenly spaced on the color wheel.



68.3580, 66.2311, 73.4710



63.4226, 66.2311, 58.0760



57.8363, 66.2311, 70.7746



62.4811, 66.2311, 88.2503

Rectangle

The Rectangle color scheme consists of four colors that form a rectangle on the color wheel.



68.3580, 66.2311, 73.4710



66.7666, 66.2311, 61.9600



57.8363, 66.2311, 70.7746



59.2830, 66.2311, 83.3217

Sweetspot

The Sweet Spot groups the original color and five complimentary colors.



68.3599, 66.2340, 73.4724



90.8061, 93.2335, 102.1788



67.8803, 65.6715, 87.6963



19.2704, 19.6920, 21.6061



0.0000, 0.0000, 0.0000



20.3446, 21.4041, 23.3091

Same Dimension

The Same Dimension uses a secret algorithm to generate beautiful new colors.



68.3599, 66.2340, 73.4724



80.2008, 76.4418, 85.0205



68.3292, 68.1660, 67.3171



15.2725, 15.1369, 16.7203



19.8923, 10.1596, 5.2339



1.6052, 0.8150, 0.6384

Inverse Universe

The Inverse Universe completely reimagines the original color for something new.



68.3599, 66.2340, 73.4724



80.2008, 76.4418, 85.0205



68.4712, 75.5728, 89.5763



15.2725, 15.1369, 16.7203



19.8923, 10.1596, 5.2339



1.6052, 0.8150, 0.6384

Previews

White Background



This preview shows how the XYZ color 68.3580, 66.2311, 73.4710 looks on a white background.

Color Contrast Check

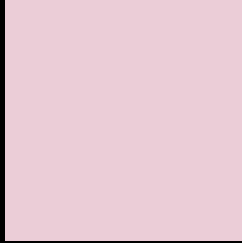
Large Text (above 18pt) WCAG AA × Fail

Any Text WCAG AA × Fail

Large Text (above 18pt) WCAG AAA × Fail

Any Text WCAG AAA × Fail

Black Background



This preview shows how the XYZ color 68.3580, 66.2311, 73.4710 looks on a black background.

Color Contrast Check

Large Text (above 18pt) WCAG AA ✓ Pass

Any Text WCAG AA ✓ Pass

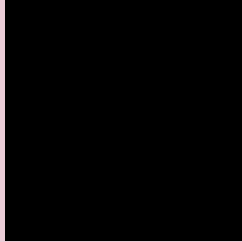
Large Text (above 18pt) WCAG AAA ✓ Pass

Any Text WCAG AAA ✓ Pass

If you want to check with other color combinations, try the [Color Contrast Checker](#).

XYZ 68.3580, 66.2311, 73.4710

Background



This preview shows how black text looks on a background with the XYZ color 68.3580, 66.2311, 73.4710.



This preview shows how white text looks on a background with the XYZ color 68.3580, 66.2311,

73.4710.

Color Blindness Simulation

Color vision deficiency is a very complex topic, and I could not describe the different causes any better than Wikipedia does, so if you want to learn more, you should check out their [article about color blindness](#).

Dichromacy



Original Color

68.3580, 66.2311, 73.4710

Protanopia

64.3540, 66.6485, 76.4905

Deuteranopia

67.6158, 66.2047, 73.5050



Tritanopia

69.1032, 66.1859, 76.8432

Trichromacy



Original Color

68.3580, 66.2311, 73.4710

Protanomaly

65.5796, 66.1925, 75.6497

Deuteranomaly

67.9413, 66.3725, 73.5203

Tritanomaly

68.8398, 66.0806, 75.4562

Monochromacy



Original Color

68.3580, 66.2311, 73.4710

Achromatopsia

64.5905, 67.9542, 74.0022

Achromatomaly

65.6842, 67.0244, 73.7651

CSS Examples

Text

The CSS property to change the color of the text to XYZ 68.3580, 66.2311, 73.4710 is called "color". The color property can be set on classes, ids or directly on the HTML element.

This example shows how text in the color `rgb(235, 205, 215)` looks like.

```
.text, #text, p{  
    color:rgb(235, 205, 215)  
}
```

If you want to add a text shadow in that color use the text-shadow property, you can generate a text shadow directly with our [CSS Text Shadow Generator](#).

Here you see how black text with a 4 pixel rgb(235, 205, 215) colored shadow looks like.

```
.shadow{ text-shadow: 4px 4px 2px rgb(235, 205, 215) }
```

Border

The CSS property to change the border of an element to XYZ 68.3580, 66.2311, 73.4710 is called "border". The border property can be set on classes, ids or directly on the HTML element.

This example shows the color as border, it can be applied via the CSS property "border" or "border-color".

```
.border, #border, table{ border:4px solid rgb(235, 205, 215) }
```


If only the border color should be changed use the property `border-color`.

```
.border{ border-color:rgb(235, 205, 215) }
```

If you want to add a box shadow in that color use:

Here you see how a box with a 4 pixel `rgb(235, 205, 215)` colored shadow looks like.

```
.boxshadow{ -moz-box-shadow:4px 4px 4px  
4px rgb(235, 205, 215); -webkit-box-  
shadow:4px 4px 4px 4px rgb(235, 205, 215);  
box-shadow:4px 4px 4px 4px rgb(235, 205,  
215) }
```

Background

The CSS property to change the background color of an element to XYZ 68.3580, 66.2311, 73.4710 is called "background". The background property can be set on classes, ids or directly on the HTML element.

```
.background, #background, body{  
background: rgb(235, 205, 215) }
```

If only the background color should be changed can be used:

```
.background{ background-color: rgb(235,  
205, 215) }
```

This example shows the color as background, it is applied via the CSS property "background".

To optimize and compress your CSS code, you can use our [online CSS compressor and optimizer](#) based on csstidy. If you want to create a linear or radial gradient as background or border, check our [CSS Gradient Generator](#).

Hey! You found this booklet interesting? Support Converting Colors with the new Membership Option!

The pro membership hides all ads, plus gives you double the colors in the color bucket, and more awesome pro features!

[Learn more, Memberships starting at \\$2.50/m!](#)

**Follow me
on Twitter!**

@ConvertingColor