

Converting Colors

XYZ(68.2706, 68.1832, 67.4758)

Have a look what the booklet for
XYZ(68.2706, 68.1832, 67.4758)
contains.

XYZ(68.3270, 68.1631, 67.3132)	3
<i>Conversions</i>	4
<i>Details</i>	6
<i>Harmonies</i>	12
<i>Previews</i>	24
<i>Color Blindness Simulation</i>	28
<i>CSS Examples</i>	31

Color

**XYZ(68.3270, 68.1631,
67.3132)**

Conversions

Conversions Part 1

Format	Color
Hex	EBD2CD
RGB	235, 210, 205
RGB Percent	92%, 82%, 80%
CMY	0.0784, 0.1764, 0.1961
CMYK	0.00, 0.11, 0.13, 0.08
HSL	10°, 43%, 86%
HSV	10°, 13%, 92%
XYZ	68.3270, 68.1631, 67.3132
YIQ	216.9050, 16.5050, 3.7450

Conversions

Conversions Part 2

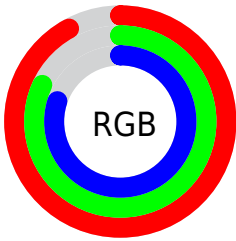
Format	Color
R _Y B	235, 211, 205
Decimal	15454925
CIE Lab	86.09, 7.87, 5.64
CIE LCh	86, 9.683, 35.603
Yxy	68.1631, 0.3353, 0.3345
Android (android.graphics.Color)	4293645005 (0xFFEBD2CD)
YUV	216.9050, -5.8692, 15.8693
Hunter-Lab	82.5609, 3.2440, 9.4526

Details

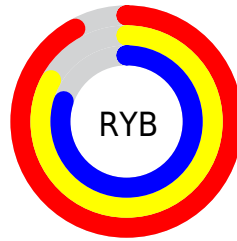
The XYZ color **68.3270, 68.1631, 67.3132** is a light color, and the websafe version is hex **FFCCCC**. A complement of this color would be **68.4688, 75.5695, 89.5757**, and the grayscale version is **65.9208, 69.3538, 75.5263**.

A 20% lighter version of the original color is **95.0500, 100.0000, 108.9000**, and **36.0648, 35.5950, 34.2479** is the 20% darker color. If you saturate the color by 10%, you get **61.1591, 58.0306, 51.9639**, and if you desaturate by 10%, it is **76.5163, 79.6550, 85.1066**.

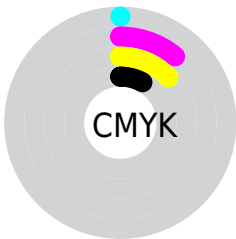
Distribution



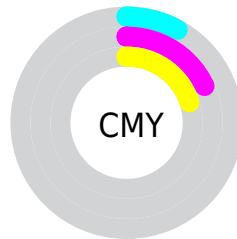
- Red (92%)
- Green (82%)
- Blue (80%)



- Red (92%)
- Yellow (83%)
- Blue (80%)



- Cyan (0%)
- Magenta (11%)
- Yellow (13%)
- Black (8%)



- Cyan (8%)
- Magenta (18%)
- Yellow (20%)

Brightness & Saturation Gradients

These gradients show how the XYZ color 68.3270, 68.1631, 67.3132 changes by changing the brightness by 10 percent. The first figure shows a shift by +10% for each color and the second figure -10%.

Similar to the brightness gradients but the following saturation gradients show a change of the XYZ color 68.3270, 68.1631, 67.3132 by changing the saturation by 10% instead.

68.3270, 68.1631,
67.3132

68.3270, 68.1631,
67.3132

444.0123,
454.0737, 469.5906

50.4385, 50.0304,
48.8760

115.8592,
116.5854, 117.0140

35.9811, 35.4376,
34.1562

146.2335,
147.6439, 149.1147

24.5897, 24.0001,
22.7353

181.5005,
183.7798, 186.6069

15.8987, 15.3337,
14.1947

222.0254,
225.3774, 229.9093

9.5429, 9.0539,
8.1159

268.1737,
272.8212, 279.4403

5.1569, 4.7764,
4.0804

320.3107,

2.3753, 2.1167,

326.4956, 335.6185

1.6695

378.8018,
386.7850, 398.8624

■ 0.8328, 0.6740,
0.3397

■ 0.0000, 0.0000,
0.0000

■ 68.3270, 68.1631,
67.3132

■ 68.3270, 68.1631,
67.3132

■ 61.1591, 58.0306,
51.9639

■ 76.5163, 79.6550,
85.1066

■ 54.9666, 49.1984,
38.9475

■ 85.7593, 92.5447,
105.4398

■ 49.7087, 41.6162,
28.1508

■ 88.0713, 96.4023,
108.5734

■ 45.3392, 35.2272,
19.4492

■ 41.8078, 29.9701,
12.7058

■ 39.0595, 25.7780,
7.7676

■ 37.0317, 22.5767,
4.4584

■ 35.6522, 20.2823,
2.5661

■ 34.9934, 19.1265,
1.8474

Harmonies

Analogous

The Analogous color harmony consists of three colors that are next to each other on the color wheel.



69.1373, 68.1631, 73.0286



68.3270, 68.1631, 67.3132



66.5697, 68.1631, 63.6126

Triad

The Triadic color harmony groups three colors that are evenly spaced from another and form a triangle on the color wheel.



68.3270, 68.1631, 67.3132



60.9695, 68.1631, 69.2727



65.2054, 68.1631, 87.0878

Complementary

The Complementary color scheme is a pair of colors which are on the opposite of each other on the color wheel.



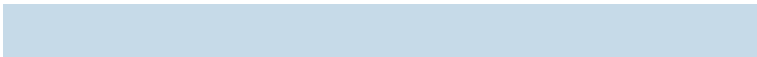
68.3270, 68.1631, 67.3132



68.4688, 75.5695, 89.5757

Split Complementary

Split-complementary colors differ from the complementary color scheme. The scheme consists of three colors, the original color and two neighbors of the complement color.



63.0364, 68.1631, 85.9412



68.3270, 68.1631, 67.3132



60.6230, 68.1631, 75.4203

Square

The Square scheme is like the rectangle color scheme, but the four colors are evenly spaced on the color wheel.



68.3270, 68.1631, 67.3132



62.3289, 68.1631, 64.6977



61.3714, 68.1631, 81.5796



67.3089, 68.1631, 84.6292

Rectangle

The Rectangle color scheme consists of four colors that form a rectangle on the color wheel.



68.3270, 68.1631, 67.3132



65.1154, 68.1631, 62.6630



61.3714, 68.1631, 81.5796



64.4596, 68.1631, 87.1128

Sweetspot

The Sweet Spot groups the original color and five complimentary colors.



68.3289, 68.1661, 67.3146



90.7994, 94.0573, 99.5954



70.3761, 67.0390, 84.0943



19.2686, 19.8994, 20.9548



0.0000, 0.0000, 0.0000



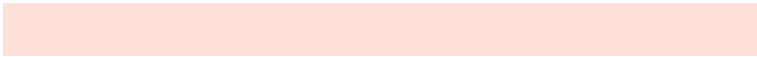
20.3446, 21.4041, 23.3091

Same Dimension

The Same Dimension uses a secret algorithm to generate beautiful new colors.



68.3289, 68.1661, 67.3146



80.1544, 79.1017, 76.5188



72.2065, 75.9213, 68.6072



15.2685, 15.4599, 15.6981



19.5371, 10.7685, 1.0488



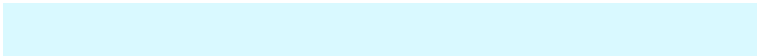
1.5942, 0.9658, 0.1024

Inverse Universe

The Inverse Universe completely reimagines the original color for something new.



68.4688, 75.5695, 89.5757



80.3493, 89.4500, 107.6385



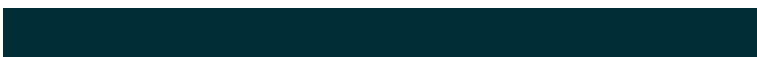
64.4736, 67.5791, 88.2440



15.2914, 16.6692, 19.3338



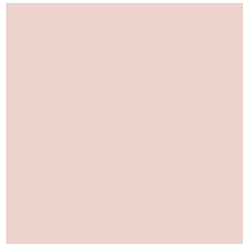
19.3881, 25.4233, 47.6283



1.5792, 2.1099, 3.7589

Previews

White Background



This preview shows how the XYZ color 68.3270, 68.1631, 67.3132 looks on a white background.

Color Contrast Check

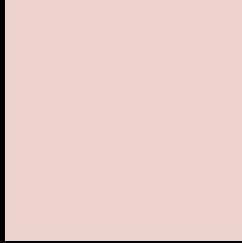
Large Text (above 18pt) WCAG AA × Fail

Any Text WCAG AA × Fail

Large Text (above 18pt) WCAG AAA × Fail

Any Text WCAG AAA × Fail

Black Background



This preview shows how the XYZ color 68.3270, 68.1631, 67.3132 looks on a black background.

Color Contrast Check

Large Text (above 18pt) WCAG AA ✓ Pass

Any Text WCAG AA ✓ Pass

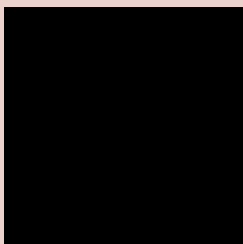
Large Text (above 18pt) WCAG AAA ✓ Pass

Any Text WCAG AAA ✓ Pass

If you want to check with other color combinations, try the [Color Contrast Checker](#).

XYZ 68.3270, 68.1631, 67.3132

Background



This preview shows how black text looks on a background with the XYZ color 68.3270, 68.1631, 67.3132.

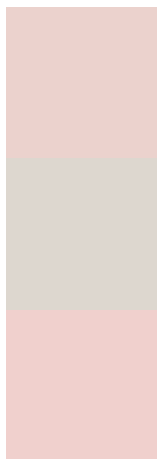


This preview shows how white text looks on a background with the XYZ color 68.3270, 68.1631,

Color Blindness Simulation

Color vision deficiency is a very complex topic, and I could not describe the different causes any better than Wikipedia does, so if you want to learn more, you should check out their [article about color blindness](#).

Dichromacy



Original Color

68.3270, 68.1631, 67.3132

Protanopia

65.3817, 68.4780, 68.8031

Deuteranopia

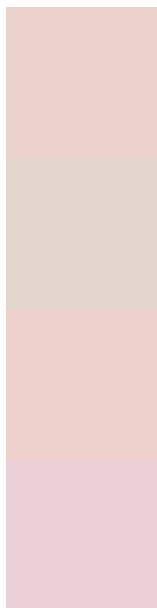
69.5105, 68.0448, 67.2280



Tritanopia

70.5572, 67.9579, 79.2105

Trichromacy



Original Color

68.3270, 68.1631, 67.3132

Protanomaly

66.2989, 68.2135, 68.0647

Deuteranomaly

69.0798, 68.1858, 67.2779

Tritanomaly

69.5426, 67.9025, 74.4069

Monochromacy



Original Color

68.3270, 68.1631, 67.3132

Achromatopsia

65.9525, 69.3872, 75.5626

Achromatomaly

66.7973, 68.7445, 72.6992

CSS Examples

Text

The CSS property to change the color of the text to XYZ 68.3270, 68.1631, 67.3132 is called "color". The color property can be set on classes, ids or directly on the HTML element.

This example shows how text in the color `rgb(235, 210, 205)` looks like.

```
.text, #text, p{  
    color:rgb(235, 210, 205)  
}
```

If you want to add a text shadow in that color use the text-shadow property, you can generate a text shadow directly with our [CSS Text Shadow Generator](#).

Here you see how black text with a 4 pixel rgb(235, 210, 205) colored shadow looks like.

```
.shadow{ text-shadow: 4px 4px 2px rgb(235, 210, 205) }
```

Border

The CSS property to change the border of an element to XYZ 68.3270, 68.1631, 67.3132 is called "border". The border property can be set on classes, ids or directly on the HTML element.

This example shows the color as border, it can be applied via the CSS property "border" or "border-color".

```
.border, #border, table{ border:4px solid rgb(235, 210, 205) }
```


If only the border color should be changed use the property border-color.

```
.border{ border-color:rgb(235, 210, 205) }
```

If you want to add a box shadow in that color use:

Here you see how a box with a 4 pixel rgb(235, 210, 205) colored shadow looks like.

```
.boxshadow{ -moz-box-shadow:4px 4px 4px  
4px rgb(235, 210, 205); -webkit-box-  
shadow:4px 4px 4px 4px rgb(235, 210, 205);  
box-shadow:4px 4px 4px 4px rgb(235, 210,  
205) }
```

Background

The CSS property to change the background color of an element to XYZ 68.3270, 68.1631, 67.3132 is called "background". The background property can be set on classes, ids or directly on the HTML element.

```
.background, #background, body{  
background: rgb(235, 210, 205) }
```

If only the background color should be changed can be used:

```
.background{ background-color: rgb(235,  
210, 205) }
```

This example shows the color as background, it is applied via the CSS property "background".

To optimize and compress your CSS code, you can use our [online CSS compressor and optimizer](#) based on csstidy. If you want to create a linear or radial gradient as background or border, check our [CSS Gradient Generator](#).

Hey! You found this booklet interesting? Support Converting Colors with the new Membership Option!

The pro membership hides all ads, plus gives you double the colors in the color bucket, and more awesome pro features!

[Learn more, Memberships starting at \\$2.50/m!](#)

**Follow me
on Twitter!**

@ConvertingColor