

Converting Colors

XYZ(68.3365, 69.4479, 62.6204)

Have a look what the booklet for
XYZ(68.3365, 69.4479, 62.6204)
contains.

XYZ(68.1332, 69.2819, 62.6051)	3
<i>Conversions</i>	4
<i>Details</i>	6
<i>Harmonies</i>	12
<i>Previews</i>	24
<i>Color Blindness Simulation</i>	28
<i>CSS Examples</i>	31

Color

**XYZ(68.1332, 69.2819,
62.6051)**

Conversions

Conversions Part 1

Format	Color
Hex	EBD5C5
RGB	235, 213, 197
RGB Percent	92%, 84%, 77%
CMY	0.0784, 0.1647, 0.2274
CMYK	0.00, 0.09, 0.16, 0.08
HSL	25°, 49%, 85%
HSV	25°, 16%, 92%
XYZ	68.1332, 69.2819, 62.6051
YIQ	217.7540, 18.2480, -0.3120

Conversions

Conversions Part 2

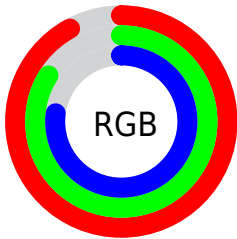
Format	Color
RYB	235, 225, 197
Decimal	15455685
CIELab	86.64, 5.05, 10.66
CIELCh	87, 11.801, 64.639
Yxy	69.2819, 0.3406, 0.3464
Android (android.graphics.Color)	4293645765 (0xFFEBD5C5)
YUV	217.7540, -10.2317, 15.1247
Hunter-Lab	83.2357, 0.4499, 13.6705

Details

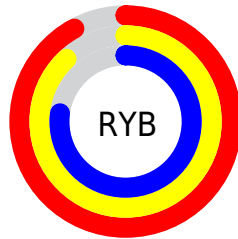
The XYZ color **68.1332, 69.2819, 62.6051** is a light color, and the websafe version is hex **CCCCCC**. A complement of this color would be **63.3524, 68.5299, 88.4862**, and the grayscale version is **66.5321, 69.9970, 76.2267**.

A 20% lighter version of the original color is **94.8894, 99.9358, 108.0543**, and **35.7752, 36.0206, 31.0537** is the 20% darker color. If you saturate the color by 10%, you get **62.3690, 61.7316, 48.4183**, and if you desaturate by 10%, it is **74.6080, 77.5803, 79.1013**.

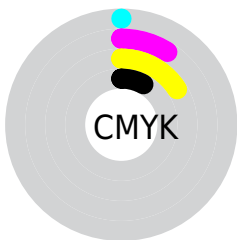
Distribution



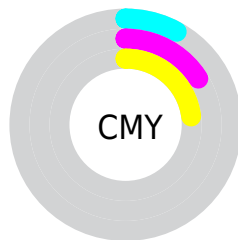
- Red (92%)
- Green (84%)
- Blue (77%)



- Red (92%)
- Yellow (88%)
- Blue (77%)



- Cyan (0%)
- Magenta (9%)
- Yellow (16%)
- Black (8%)



- Cyan (8%)
- Magenta (16%)
- Yellow (23%)

Brightness & Saturation Gradients

These gradients show how the XYZ color 68.1332, 69.2819, 62.6051 changes by changing the brightness by 10 percent. The first figure shows a shift by +10% for each color and the second figure -10%.

Similar to the brightness gradients but the following saturation gradients show a change of the XYZ color 68.1332, 69.2819, 62.6051 by changing the saturation by 10% instead.

68.1332, 69.2819,
62.6051

68.1332, 69.2819,
62.6051

443.3371,
458.0246, 452.2033

50.2802, 50.9413,
45.0829

115.5835,
118.1841, 110.1797

35.8548, 36.1619,
31.1793

145.9116,
149.5146, 141.0691

24.4916, 24.5593,
20.4758

181.1286,
185.9437, 177.2513

15.8254, 15.7490,
12.5539

221.6001,
227.8561, 219.1448

9.4908, 9.3467,
6.9950

267.6913,
275.6359, 267.1683

5.1223, 4.9680,
3.3806

319.7677,

2.3547, 2.2285,

329.6677, 321.7401

1.2921

378.1945,
390.3358, 383.2790

■ 0.8224, 0.7355,
0.0553

■ 0.0000, 0.0000,
0.0000

■ 68.1332, 69.2819,
62.6051

■ 68.1332, 69.2819,
62.6051

■ 62.3690, 61.7316,
48.4183

■ 74.6080, 77.5803,
79.1013

■ 57.2833, 54.8983,
36.4321

■ 81.8127, 86.6383,
98.0002

■ 52.8498, 48.7623,
26.5353

■ 87.6936, 95.6473,
108.4476

■ 49.0382, 43.2992,
18.6053

■ 88.0711, 96.4023,
108.5734

■ 45.8152, 38.4830,
12.5064

■ 43.1439, 34.2857,
8.0854

■ 40.9823, 30.6765,
5.1636

■ 39.2796, 27.6202,
3.5195

■ 38.7207, 26.5815,
3.0899

Harmonies

Analogous

The Analogous color harmony consists of three colors that are next to each other on the color wheel.



70.2815, 69.2819, 67.1797



68.1332, 69.2819, 62.6051



65.4252, 69.2819, 61.3725

Triad

The Triadic color harmony groups three colors that are evenly spaced from another and form a triangle on the color wheel.



68.1332, 69.2819, 62.6051



60.7368, 69.2819, 76.6632



68.8910, 69.2819, 88.5457

Complementary

The Complementary color scheme is a pair of colors which are on the opposite of each other on the color wheel.



68.1332, 69.2819, 62.6051



63.3524, 68.5299, 88.4862

Split Complementary

Split-complementary colors differ from the complementary color scheme. The scheme consists of three colors, the original color and two neighbors of the complement color.



66.2774, 69.2819, 91.4993



68.1332, 69.2819, 62.6051



61.6095, 69.2819, 84.3429

Square

The Square scheme is like the rectangle color scheme, but the four colors are evenly spaced on the color wheel.



68.1332, 69.2819, 62.6051



61.2028, 69.2819, 69.1553



63.6191, 69.2819, 89.9106



70.7274, 69.2819, 82.0863

Rectangle

The Rectangle color scheme consists of four colors that form a rectangle on the color wheel.



68.1332, 69.2819, 62.6051



63.6780, 69.2819, 62.5341



63.6191, 69.2819, 89.9106



68.0716, 69.2819, 90.0011

Sweetspot

The Sweet Spot groups the original color and five complimentary colors.



68.1351, 69.2850, 62.6066



90.7553, 94.5872, 97.6752



67.0360, 62.7188, 75.7064



19.3000, 20.0867, 20.5815



0.0000, 0.0000, 0.0000



20.3446, 21.4041, 23.3091

Same Dimension

The Same Dimension uses a secret algorithm to generate beautiful new colors.



68.1351, 69.2850, 62.6066



79.9046, 80.6571, 70.1004



73.1493, 79.3133, 64.2780



15.5869, 16.0967, 15.8042



21.6697, 15.0337, 1.7597



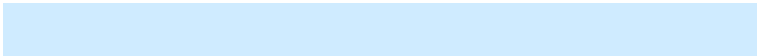
1.7949, 1.3671, 0.1693

Inverse Universe

The Inverse Universe completely reimagines the original color for something new.



63.3524, 68.5299, 88.4862



73.2488, 79.6051, 106.1124



58.7151, 59.2553, 86.9404



14.9554, 15.9972, 19.2218



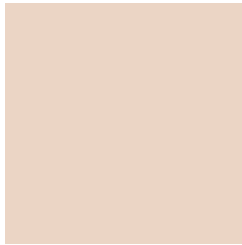
13.3765, 13.3999, 45.6244



1.1452, 1.2419, 3.6142

Previews

White Background



This preview shows how the XYZ color 68.1332, 69.2819, 62.6051 looks on a white background.

Color Contrast Check

Large Text (above 18pt) WCAG AA × Fail

Any Text WCAG AA × Fail

Large Text (above 18pt) WCAG AAA × Fail

Any Text WCAG AAA × Fail

Black Background



This preview shows how the XYZ color 68.1332, 69.2819, 62.6051 looks on a black background.

Color Contrast Check

Large Text (above 18pt) WCAG AA ✓ Pass

Any Text WCAG AA ✓ Pass

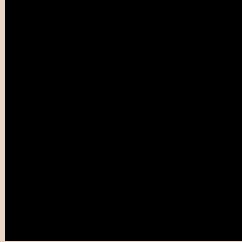
Large Text (above 18pt) WCAG AAA ✓ Pass

Any Text WCAG AAA ✓ Pass

If you want to check with other color combinations, try the [Color Contrast Checker](#).

XYZ 68.1332, 69.2819, 62.6051

Background



This preview shows how black text looks on a background with the XYZ color 68.1332, 69.2819, 62.6051.



This preview shows how white text looks on a background with the XYZ color 68.1332, 69.2819,

Color Blindness Simulation

Color vision deficiency is a very complex topic, and I could not describe the different causes any better than Wikipedia does, so if you want to learn more, you should check out their [article about color blindness](#).

Dichromacy



Original Color

68.1332, 69.2819, 62.6051

Protanopia

65.9160, 69.2428, 63.9239

Deuteranopia

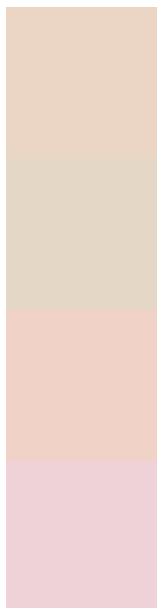
70.6497, 69.0906, 63.0383



Tritanopia

71.9877, 69.3879, 80.8332

Trichromacy



Original Color

68.1332, 69.2819, 62.6051

Protanomaly

66.8066, 69.3361, 63.2882

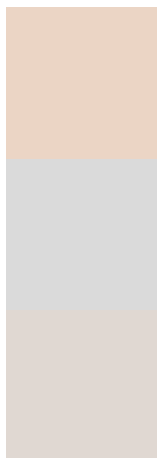
Deuteranomaly

69.5153, 68.8712, 63.0557

Tritanomaly

70.5722, 69.1766, 73.9228

Monochromacy



Original Color

68.1332, 69.2819, 62.6051

Achromatopsia

66.6397, 70.1102, 76.3500

Achromatomaly

66.9292, 69.6122, 70.8817

CSS Examples

Text

The CSS property to change the color of the text to XYZ 68.1332, 69.2819, 62.6051 is called "color". The color property can be set on classes, ids or directly on the HTML element.

This example shows how text in the color rgb(235, 213, 197) looks like.

```
.text, #text, p{  
    color:rgb(235, 213, 197)  
}
```

If you want to add a text shadow in that color use the text-shadow property, you can generate a text shadow directly with our [CSS Text Shadow Generator](#).

Here you see how black text with a 4 pixel rgb(235, 213, 197) colored shadow looks like.

```
.shadow{ text-shadow: 4px 4px 2px rgb(235, 213, 197) }
```

Border

The CSS property to change the border of an element to XYZ 68.1332, 69.2819, 62.6051 is called "border". The border property can be set on classes, ids or directly on the HTML element.

This example shows the color as border, it can be applied via the CSS property "border" or "border-color".

```
.border, #border, table{ border:4px solid rgb(235, 213, 197) }
```


If only the border color should be changed use the property `border-color`.

```
.border{ border-color:rgb(235, 213, 197) }
```

If you want to add a box shadow in that color use:

Here you see how a box with a 4 pixel `rgb(235, 213, 197)` colored shadow looks like.

```
.boxshadow{ -moz-box-shadow:4px 4px 4px  
4px rgb(235, 213, 197); -webkit-box-  
shadow:4px 4px 4px 4px rgb(235, 213, 197);  
box-shadow:4px 4px 4px 4px rgb(235, 213,  
197) }
```

Background

The CSS property to change the background color of an element to XYZ 68.1332, 69.2819, 62.6051 is called "background". The background property can be set on classes, ids or directly on the HTML element.

```
.background, #background, body{  
background: rgb(235, 213, 197) }
```

If only the background color should be changed can be used:

```
.background{ background-color: rgb(235,  
213, 197) }
```

This example shows the color as background, it is applied via the CSS property "background".

To optimize and compress your CSS code, you can use our [online CSS compressor and optimizer](#) based on csstidy. If you want to create a linear or radial gradient as background or border, check our [CSS Gradient Generator](#).

Hey! You found this booklet interesting? Support Converting Colors with the new Membership Option!

The pro membership hides all ads, plus gives you double the colors in the color bucket, and more awesome pro features!

[Learn more, Memberships starting at \\$2.50/m!](#)

**Follow me
on Twitter!**

@ConvertingColor