

Converting Colors

XYZ(68.3567, 68.6994, 68.4018)

Have a look what the booklet for
XYZ(68.3567, 68.6994, 68.4018)
contains.

XYZ(68.1610, 68.4172, 68.6448)	3
<i>Conversions</i>	4
<i>Details</i>	6
<i>Harmonies</i>	12
<i>Previews</i>	24
<i>Color Blindness Simulation</i>	28
<i>CSS Examples</i>	31

Color

**XYZ(68.1610, 68.4172,
68.6448)**

Conversions

Conversions Part 1

Format	Color
Hex	E9D3CF
RGB	233, 211, 207
RGB Percent	91%, 83%, 81%
CMY	0.0863, 0.1725, 0.1882
CMYK	0.00, 0.09, 0.11, 0.09
HSL	9°, 37%, 86%
HSV	9°, 11%, 91%
XYZ	68.1610, 68.4172, 68.6448
YIQ	217.1220, 14.3960, 3.4200

Conversions

Conversions Part 2

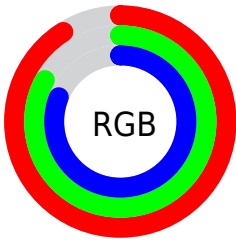
Format	Color
R _Y B	233, 212, 207
Decimal	15324111
CIE Lab	86.21, 6.96, 4.74
CIE LCh	86, 8.424, 34.238
Yxy	68.4172, 0.3321, 0.3334
Android (android.graphics.Color)	4293514191 (0xFFE9D3CF)
YUV	217.1220, -4.9901, 13.9250
Hunter-Lab	82.7147, 2.3421, 8.6956

Details

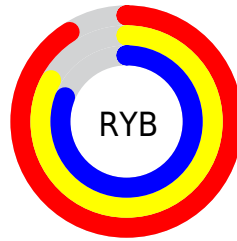
The XYZ color **68.1610, 68.4172, 68.6448** is a light color, and the websafe version is hex **CCCCCC**. A complement of this color would be **68.4590, 75.1856, 87.9955**, and the grayscale version is **66.0648, 69.5053, 75.6913**.

A 20% lighter version of the original color is **95.0500, 100.0000, 108.9000**, and **35.7697, 35.4240, 35.0892** is the 20% darker color. If you saturate the color by 10%, you get **60.9200, 58.1620, 53.1990**, and if you desaturate by 10%, it is **76.4267, 80.0476, 86.5077**.

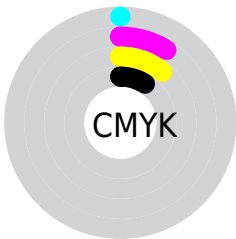
Distribution



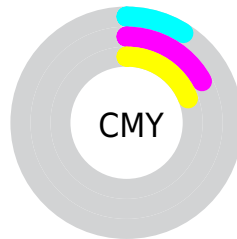
- Red (91%)
- Green (83%)
- Blue (81%)



- Red (91%)
- Yellow (83%)
- Blue (81%)



- Cyan (0%)
- Magenta (9%)
- Yellow (11%)
- Black (9%)



- Cyan (9%)
- Magenta (17%)
- Yellow (19%)

Brightness & Saturation Gradients

These gradients show how the XYZ color 68.1610, 68.4172, 68.6448 changes by changing the brightness by 10 percent. The first figure shows a shift by +10% for each color and the second figure -10%.

Similar to the brightness gradients but the following saturation gradients show a change of the XYZ color 68.1610, 68.4172, 68.6448 by changing the saturation by 10% instead.

68.1610, 68.4172,
68.6448

68.1610, 68.4172,
68.6448

443.4340,
454.9728, 474.4372

50.3029, 50.2372,
49.9525

115.6231,
116.9488, 118.9370

35.8729, 35.6019,
35.0048

145.9578,
148.0692, 151.3741

24.5057, 24.1269,
23.3830

181.1820,
184.2718, 189.2298

15.8359, 15.4278,
14.6686

221.6611,
225.9411, 232.9227

9.4982, 9.1202,
8.4431

267.7606,
273.4615, 282.8713

5.1273, 4.8196,
4.2879

319.8456,

2.3577, 2.1418,

327.2173, 339.4942

1.7846

378.2816,
387.5929, 403.2100

■ 0.8239, 0.6880,
0.4178

■ 0.0000, 0.0000,
0.0000

■ 68.1610, 68.4172,
68.6448

■ 68.1610, 68.4172,
68.6448

■ 60.9200, 58.1620,
53.1990

■ 76.4267, 80.0476,
86.5077

■ 54.6581, 49.2224,
40.0621

■ 85.7492, 93.0920,
106.8809

■ 49.3345, 41.5475,
29.1242

■ 87.4145, 96.0638,
108.5427

■ 44.9034, 35.0800,
20.2647

■ 41.3152, 29.7580,
13.3514

■ 38.5150, 25.5140,
8.2366

■ 36.4415, 22.2733,
4.7516

■ 35.0237, 19.9513,
2.6953

■ 34.2320, 18.5786,
1.7818

Harmonies

Analogous

The Analogous color harmony consists of three colors that are next to each other on the color wheel.



68.8195, 68.4172, 73.7081



68.1610, 68.4172, 68.6448



66.6631, 68.4172, 65.2825

Triad

The Triadic color harmony groups three colors that are evenly spaced from another and form a triangle on the color wheel.



68.1610, 68.4172, 68.6448



61.7269, 68.4172, 69.9477



65.3045, 68.4172, 85.6634

Complementary

The Complementary color scheme is a pair of colors which are on the opposite of each other on the color wheel.



68.1610, 68.4172, 68.6448



68.4590, 75.1856, 87.9955

Split Complementary

Split-complementary colors differ from the complementary color scheme. The scheme consists of three colors, the original color and two neighbors of the complement color.



63.4208, 68.4172, 84.5351



68.1610, 68.4172, 68.6448



61.3793, 68.4172, 75.2869

Square

The Square scheme is like the rectangle color scheme, but the four colors are evenly spaced on the color wheel.



68.1610, 68.4172, 68.6448



62.9524, 68.4172, 66.0081



61.9935, 68.4172, 80.6679



67.1497, 68.4172, 83.6792

Rectangle

The Rectangle color scheme consists of four colors that form a rectangle on the color wheel.



68.1610, 68.4172, 68.6448



65.4037, 68.4172, 64.3640



61.9935, 68.4172, 80.6679



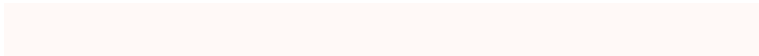
64.6548, 68.4172, 85.6362

Sweetspot

The Sweet Spot groups the original color and five complimentary colors.



68.1629, 68.4202, 68.6463



91.8126, 95.4571, 101.8652



70.0747, 67.6129, 83.5599



19.4707, 20.1776, 21.4110



0.0000, 0.0000, 0.0000



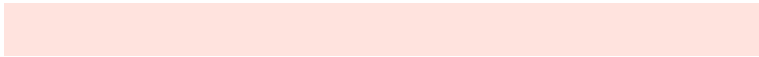
20.3446, 21.4041, 23.3091

Same Dimension

The Same Dimension uses a secret algorithm to generate beautiful new colors.



68.1629, 68.4202, 68.6463



81.8617, 81.4398, 80.4068



71.4963, 75.0870, 69.7574



15.2527, 15.4285, 15.6928



19.4803, 10.6548, 1.0299



1.5868, 0.9509, 0.0999

Inverse Universe

The Inverse Universe completely reimagines the original color for something new.



68.4590, 75.1856, 87.9955



82.2811, 91.0315, 107.8419



65.0224, 68.3125, 86.8500



15.3086, 16.7036, 19.3395



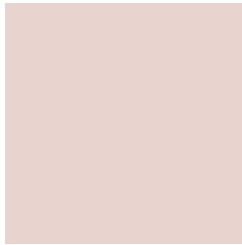
19.7640, 26.1750, 47.7536



1.6053, 2.1621, 3.7676

Previews

White Background



This preview shows how the XYZ color 68.1610, 68.4172, 68.6448 looks on a white background.

Color Contrast Check

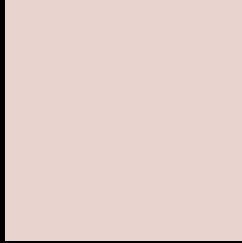
Large Text (above 18pt) WCAG AA × Fail

Any Text WCAG AA × Fail

Large Text (above 18pt) WCAG AAA × Fail

Any Text WCAG AAA × Fail

Black Background



This preview shows how the XYZ color 68.1610, 68.4172, 68.6448 looks on a black background.

Color Contrast Check

Large Text (above 18pt) WCAG AA ✓ Pass

Any Text WCAG AA ✓ Pass

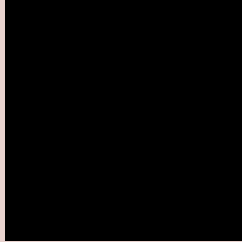
Large Text (above 18pt) WCAG AAA ✓ Pass

Any Text WCAG AAA ✓ Pass

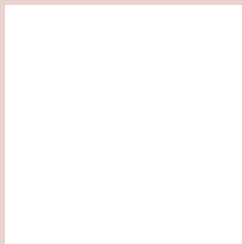
If you want to check with other color combinations, try the [Color Contrast Checker](#).

XYZ 68.1610, 68.4172, 68.6448

Background



This preview shows how black text looks on a background with the XYZ color 68.1610, 68.4172, 68.6448.

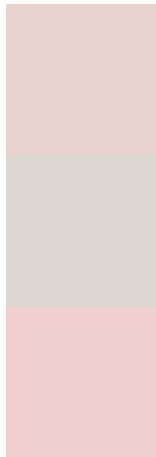


This preview shows how white text looks on a background with the XYZ color 68.1610, 68.4172,

Color Blindness Simulation

Color vision deficiency is a very complex topic, and I could not describe the different causes any better than Wikipedia does, so if you want to learn more, you should check out their [article about color blindness](#).

Dichromacy



Original Color

68.1610, 68.4172, 68.6448

Protanopia

65.6279, 68.5765, 70.0992

Deuteranopia

69.9981, 68.6312, 68.5893



Tritanopia

70.4074, 68.2102, 80.6892

Trichromacy



Original Color

68.1610, 68.4172, 68.6448

Protanomaly

66.4831, 68.6548, 69.4222

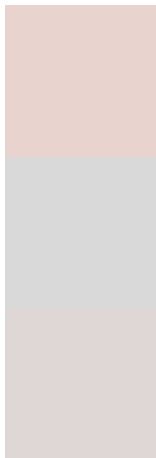
Deuteranomaly

69.2341, 68.6027, 68.6241

Tritanomaly

69.3870, 68.1553, 75.8279

Monochromacy



Original Color

68.1610, 68.4172, 68.6448

Achromatopsia

65.9525, 69.3872, 75.5626

Achromatomaly

66.7421, 69.0929, 72.7694

CSS Examples

Text

The CSS property to change the color of the text to XYZ 68.1610, 68.4172, 68.6448 is called "color". The color property can be set on classes, ids or directly on the HTML element.

This example shows how text in the color rgb(233, 211, 207) looks like.

```
.text, #text, p{  
    color:rgb(233, 211, 207)  
}
```

If you want to add a text shadow in that color use the text-shadow property, you can generate a text shadow directly with our [CSS Text Shadow Generator](#).

Here you see how black text with a 4 pixel rgb(233, 211, 207) colored shadow looks like.

```
.shadow{ text-shadow: 4px 4px 2px rgb(233, 211, 207) }
```

Border

The CSS property to change the border of an element to XYZ 68.1610, 68.4172, 68.6448 is called "border". The border property can be set on classes, ids or directly on the HTML element.

This example shows the color as border, it can be applied via the CSS property "border" or "border-color".

```
.border, #border, table{ border:4px solid rgb(233, 211, 207) }
```


If only the border color should be changed use the property `border-color`.

```
.border{ border-color:rgb(233, 211, 207) }
```

If you want to add a box shadow in that color use:

Here you see how a box with a 4 pixel `rgb(233, 211, 207)` colored shadow looks like.

```
.boxshadow{ -moz-box-shadow:4px 4px 4px  
4px rgb(233, 211, 207); -webkit-box-  
shadow:4px 4px 4px 4px rgb(233, 211, 207);  
box-shadow:4px 4px 4px 4px rgb(233, 211,  
207) }
```

Background

The CSS property to change the background color of an element to XYZ 68.1610, 68.4172, 68.6448 is called "background". The background property can be set on classes, ids or directly on the HTML element.

```
.background, #background, body{  
background: rgb(233, 211, 207) }
```

If only the background color should be changed can be used:

```
.background{ background-color: rgb(233,  
211, 207) }
```

This example shows the color as background, it is applied via the CSS property "background".

To optimize and compress your CSS code, you can use our [online CSS compressor and optimizer](#) based on csstidy. If you want to create a linear or radial gradient as background or border, check our [CSS Gradient Generator](#).

Hey! You found this booklet interesting? Support Converting Colors with the new Membership Option!

The pro membership hides all ads, plus gives you double the colors in the color bucket, and more awesome pro features!

[Learn more, Memberships starting at \\$2.50/m!](#)

**Follow me
on Twitter!**

@ConvertingColor