

Converting Colors

XYZ(68.3710, 66.6756, 69.9214)

Have a look what the booklet for
XYZ(68.3710, 66.6756, 69.9214)
contains.

XYZ(68.2962, 66.6286, 70.2338)	3
<i>Conversions</i>	4
<i>Details</i>	6
<i>Harmonies</i>	12
<i>Previews</i>	24
<i>Color Blindness Simulation</i>	28
<i>CSS Examples</i>	31

Color

**XYZ(68.2962, 66.6286,
70.2338)**

Conversions

Conversions Part 1

Format	Color
Hex	ECCED2
RGB	236, 206, 210
RGB Percent	93%, 81%, 82%
CMY	0.0745, 0.1921, 0.1765
CMYK	0.00, 0.13, 0.11, 0.07
HSL	352°, 44%, 87%
HSV	352°, 13%, 93%
XYZ	68.2962, 66.6286, 70.2338
YIQ	215.4260, 16.5960, 7.6040

Conversions

Conversions Part 2

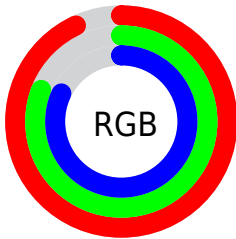
Format	Color
R _Y B	236, 206, 210
Decimal	15519442
CIE Lab	85.32, 11.13, 1.88
CIE LCh	85, 11.290, 9.570
Yxy	66.6286, 0.3329, 0.3248
Android (android.graphics.Color)	4293709522 (0xFFECCED2)
YUV	215.4260, -2.6750, 18.0434
Hunter-Lab	81.6263, 6.5036, 6.1235

Details

The XYZ color **68.2962, 66.6286, 70.2338** is a light color, and the websafe version is hex **FFCCCC**. A complement of this color would be **70.0171, 78.9405, 87.8944**, and the grayscale version is **64.8913, 68.2707, 74.3468**.

A 20% lighter version of the original color is **95.0500, 100.0000, 108.9000**, and **36.0514, 34.5601, 36.2231** is the 20% darker color. If you saturate the color by 10%, you get **60.6481, 55.1531, 55.9042**, and if you desaturate by 10%, it is **77.1269, 79.9464, 86.5665**.

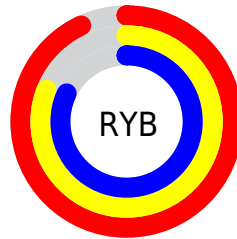
Distribution



Red (93%)

Green (81%)

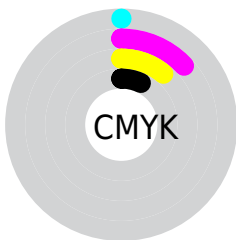
Blue (82%)



Red (93%)

Yellow (81%)

Blue (82%)

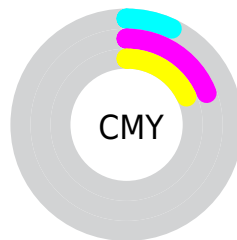


Cyan (0%)

Magenta (13%)

Yellow (11%)

Black (7%)



Cyan (7%)

Magenta (19%)

Yellow (18%)

Brightness & Saturation Gradients

These gradients show how the XYZ color 68.2962, 66.6286, 70.2338 changes by changing the brightness by 10 percent. The first figure shows a shift by +10% for each color and the second figure -10%.

Similar to the brightness gradients but the following saturation gradients show a change of the XYZ color 68.2962, 66.6286, 70.2338 by changing the saturation by 10% instead.

68.2962, 66.6286,
70.2338

68.2962, 66.6286,
70.2338

443.9050,
448.6216, 480.1818

50.4133, 48.7829,
51.2392

115.8154,
114.3881, 121.2263

35.9610, 34.4473,
36.0209

146.1823,
145.0706, 154.0614

24.5741, 23.2374,
24.1606

181.4414,
180.8008, 192.3469

15.8871, 14.7689,
15.2395

221.9578,
221.9632, 236.5016

9.5346, 8.6574,
8.8391

268.0971,
268.9421, 286.9438

5.1514, 4.5184,
4.5410

320.2245,

2.3720, 1.9676,

322.1218, 344.0923

1.9266

378.7053,
381.8869, 408.3654

■ 0.8311, 0.5885,
0.5096

■ 0.0000, 0.0000,
0.0000

■ 68.2962, 66.6286,
70.2338

■ 68.2962, 66.6286,
70.2338

■ 60.6481, 55.1531,
55.9042

■ 77.1269, 79.9464,
86.5665

■ 54.1269, 45.4304,
43.4961

■ 87.1817, 95.1732,
104.9709

■ 48.6806, 37.3765,
32.9290

■ 88.4024, 96.5730,
108.5889

■ 44.2510, 30.8976,
24.1147

■ 40.7744, 25.8901,
16.9578

■ 38.1798, 22.2381,
11.3537

■ 36.3859, 19.8084,
7.1857

■ 35.2961, 18.4403,
4.3203

■ 34.8455, 17.9343,
2.9520

Harmonies

Analogous

The Analogous color harmony consists of three colors that are next to each other on the color wheel.



68.0435, 66.6286, 77.5689



68.2962, 66.6286, 70.2338



67.1905, 66.6286, 63.9506

Triad

The Triadic color harmony groups three colors that are evenly spaced from another and form a triangle on the color wheel.



68.2962, 66.6286, 70.2338



60.2510, 66.6286, 62.2354



61.6294, 66.6286, 86.5432

Complementary

The Complementary color scheme is a pair of colors which are on the opposite of each other on the color wheel.



68.2962, 66.6286, 70.2338



70.0171, 78.9405, 87.8944

Split Complementary

Split-complementary colors differ from the complementary color scheme. The scheme consists of three colors, the original color and two neighbors of the complement color.



59.6174, 66.6286, 81.8816



68.2962, 66.6286, 70.2338



58.8365, 66.6286, 67.7470

Square

The Square scheme is like the rectangle color scheme, but the four colors are evenly spaced on the color wheel.



68.2962, 66.6286, 70.2338



62.5155, 66.6286, 59.5419



58.6077, 66.6286, 74.9109



64.1485, 66.6286, 87.3205

Rectangle

The Rectangle color scheme consists of four colors that form a rectangle on the color wheel.



68.2962, 66.6286, 70.2338



65.8489, 66.6286, 61.0820



58.6077, 66.6286, 74.9109



60.8733, 66.6286, 85.3643

Sweetspot

The Sweet Spot groups the original color and five complimentary colors.



68.2981, 66.6316, 70.2352



90.4909, 93.1074, 100.5188



70.4923, 67.3576, 88.6435



19.1909, 19.6602, 21.1873



0.0000, 0.0000, 0.0000



20.3446, 21.4041, 23.3091

Same Dimension

The Same Dimension uses a secret algorithm to generate beautiful new colors.



68.2981, 66.6316, 70.2352



79.1526, 76.0226, 79.5008



70.5475, 71.9172, 68.5593



15.1472, 15.0867, 16.0602



19.2339, 9.8962, 1.7671



1.5364, 0.7875, 0.2759

Inverse Universe

The Inverse Universe completely reimagines the original color for something new.



68.2981, 66.6316, 70.2352



79.1526, 76.0226, 79.5008



67.5215, 73.0306, 89.8951



15.1472, 15.0867, 16.0602



19.2339, 9.8962, 1.7671



1.5364, 0.7875, 0.2759

Previews

White Background



This preview shows how the XYZ color 68.2962, 66.6286, 70.2338 looks on a white background.

Color Contrast Check

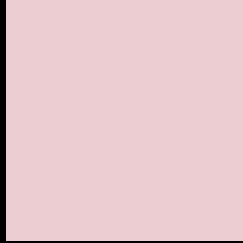
Large Text (above 18pt) WCAG AA × Fail

Any Text WCAG AA × Fail

Large Text (above 18pt) WCAG AAA × Fail

Any Text WCAG AAA × Fail

Black Background



This preview shows how the XYZ color 68.2962, 66.6286, 70.2338 looks on a black background.

Color Contrast Check

Large Text (above 18pt) WCAG AA ✓ Pass

Any Text WCAG AA ✓ Pass

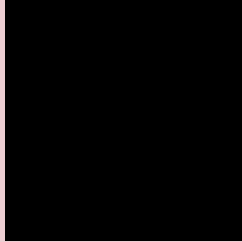
Large Text (above 18pt) WCAG AAA ✓ Pass

Any Text WCAG AAA ✓ Pass

If you want to check with other color combinations, try the [Color Contrast Checker](#).

XYZ 68.2962, 66.6286, 70.2338

Background



This preview shows how black text looks on a background with the XYZ color 68.2962, 66.6286, 70.2338.



This preview shows how white text looks on a background with the XYZ color 68.2962, 66.6286,

Color Blindness Simulation

Color vision deficiency is a very complex topic, and I could not describe the different causes any better than Wikipedia does, so if you want to learn more, you should check out their [article about color blindness](#).

Dichromacy



Original Color

68.2962, 66.6286, 70.2338

Protanopia

64.2964, 66.6937, 73.1027

Deuteranopia

67.9651, 66.4579, 70.2183



Tritanopia

69.4362, 66.3576, 76.8588

Trichromacy



Original Color

68.2962, 66.6286, 70.2338

Protanomaly

65.7973, 66.7446, 72.3659

Deuteranomaly

67.9651, 66.4579, 70.2183

Tritanomaly

69.1510, 66.6250, 74.1810

Monochromacy



Original Color

68.2962, 66.6286, 70.2338

Achromatopsia

64.5905, 67.9542, 74.0022

Achromatomaly

65.9851, 67.5790, 72.5171

CSS Examples

Text

The CSS property to change the color of the text to XYZ 68.2962, 66.6286, 70.2338 is called "color". The color property can be set on classes, ids or directly on the HTML element.

This example shows how text in the color rgb(236, 206, 210) looks like.

```
.text, #text, p{  
    color:rgb(236, 206, 210)  
}
```

If you want to add a text shadow in that color use the text-shadow property, you can generate a text shadow directly with our [CSS Text Shadow Generator](#).

Here you see how black text with a 4 pixel rgb(236, 206, 210) colored shadow looks like.

```
.shadow{ text-shadow: 4px 4px 2px rgb(236, 206, 210) }
```

Border

The CSS property to change the border of an element to XYZ 68.2962, 66.6286, 70.2338 is called "border". The border property can be set on classes, ids or directly on the HTML element.

This example shows the color as border, it can be applied via the CSS property "border" or "border-color".

```
.border, #border, table{ border:4px solid rgb(236, 206, 210) }
```


If only the border color should be changed use the property `border-color`.

```
.border{ border-color:rgb(236, 206, 210) }
```

If you want to add a box shadow in that color use:

Here you see how a box with a 4 pixel `rgb(236, 206, 210)` colored shadow looks like.

```
.boxshadow{ -moz-box-shadow:4px 4px 4px  
4px rgb(236, 206, 210); -webkit-box-  
shadow:4px 4px 4px 4px rgb(236, 206, 210);  
box-shadow:4px 4px 4px 4px rgb(236, 206,  
210) }
```

Background

The CSS property to change the background color of an element to XYZ 68.2962, 66.6286, 70.2338 is called "background". The background property can be set on classes, ids or directly on the HTML element.

```
.background, #background, body{  
background: rgb(236, 206, 210) }
```

If only the background color should be changed can be used:

```
.background{ background-color: rgb(236,  
206, 210) }
```

This example shows the color as background, it is applied via the CSS property "background".

To optimize and compress your CSS code, you can use our [online CSS compressor and optimizer](#) based on csstidy. If you want to create a linear or radial gradient as background or border, check our [CSS Gradient Generator](#).

Hey! You found this booklet interesting? Support Converting Colors with the new Membership Option!

The pro membership hides all ads, plus gives you double the colors in the color bucket, and more awesome pro features!

[Learn more, Memberships starting at \\$2.50/m!](#)

**Follow me
on Twitter!**

@ConvertingColor