

Converting Colors

XYZ(68.4111, 66.1035, 64.4119)

Have a look what the booklet for
XYZ(68.4111, 66.1035, 64.4119)
contains.

XYZ(68.4111, 66.1035, 64.4119)	3
<i>Conversions</i>	4
<i>Details</i>	6
<i>Harmonies</i>	12
<i>Previews</i>	24
<i>Color Blindness Simulation</i>	28
<i>CSS Examples</i>	31

Color

**XYZ(68.4111, 66.1035,
64.4119)**

Conversions

Conversions Part 1

Format	Color
Hex	F1CCC9
RGB	241, 204, 201
RGB Percent	95%, 80%, 79%
CMY	0.0549, 0.2000, 0.2118
CMYK	0.00, 0.15, 0.17, 0.05
HSL	5°, 59%, 87%
HSV	5°, 17%, 95%
XYZ	68.4111, 66.1035, 64.4119
YIQ	214.7210, 23.0150, 6.9110

Conversions

Conversions Part 2

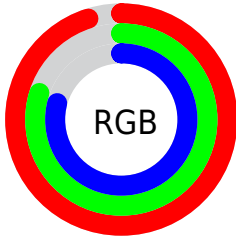
Format	Color
R _Y B	241, 204, 201
Decimal	15846601
CIE Lab	85.05, 12.53, 6.33
CIE LCh	85, 14.042, 26.795
Yxy	66.1035, 0.3439, 0.3323
Android (android.graphics.Color)	4294036681 (0xFFF1CCC9)
YUV	214.7210, -6.7645, 23.0467
Hunter-Lab	81.3041, 7.9119, 9.9412

Details

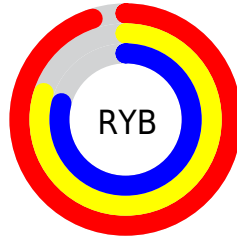
The XYZ color **68.4111, 66.1035, 64.4119** is a light color, and the websafe version is hex **FFCCCC**. A complement of this color would be **70.5386, 79.9157, 94.9272**, and the grayscale version is **64.4375, 67.7933, 73.8269**.

A 20% lighter version of the original color is **95.0500, 100.0000, 108.9000**, and **36.1804, 34.2336, 32.3046** is the 20% darker color. If you saturate the color by 10%, you get **60.8717, 55.2109, 48.9919**, and if you desaturate by 10%, it is **77.1572, 78.6964, 82.4301**.

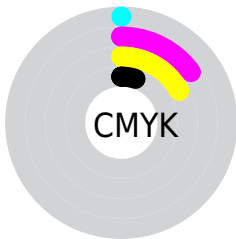
Distribution



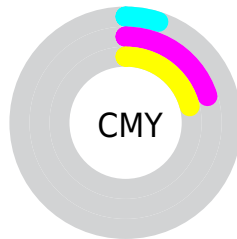
- Red (95%)
- Green (80%)
- Blue (79%)



- Red (95%)
- Yellow (80%)
- Blue (79%)



- Cyan (0%)
- Magenta (15%)
- Yellow (17%)
- Black (5%)



- Cyan (5%)
- Magenta (20%)
- Yellow (21%)

Brightness & Saturation Gradients

These gradients show how the XYZ color 68.4111, 66.1035, 64.4119 changes by changing the brightness by 10 percent. The first figure shows a shift by +10% for each color and the second figure -10%.

Similar to the brightness gradients but the following saturation gradients show a change of the XYZ color 68.4111, 66.1035, 64.4119 by changing the saturation by 10% instead.

68.4111, 66.1035,
64.4119

68.4111, 66.1035,
64.4119

444.3051,
446.7469, 458.9238

50.5072, 48.3564,
46.5361

115.9787,
113.6349, 112.8091

36.0360, 34.1092,
32.3173

146.3731,
144.1880, 144.1675

24.6322, 22.9775,
21.3372

181.6617,
179.7785, 180.8572

15.9305, 14.5769,
13.1770

222.2099,
220.7909, 223.2967

9.5655, 8.5230,
7.4184

268.3829,
267.6096, 271.9046

5.1719, 4.4314,
3.6427

320.5463,

2.3843, 1.9177,

320.6188, 327.0994

1.4315

379.0652,
380.2032, 389.2996

■ 0.8373, 0.5590,
0.1661

■ 0.0000, 0.0000,
0.0000

■ 68.4111, 66.1035,
64.4119

■ 68.4111, 66.1035,
64.4119

■ 60.8717, 55.2109,
48.9919

■ 77.1572, 78.6964,
82.4301

■ 54.4808, 45.9372,
36.0463

■ 87.1540, 93.0485,
103.1541

■ 49.1835, 38.2079,
25.4475

■ 90.0859, 97.4409,
108.6677

■ 44.9184, 31.9390,
17.0547

■ 41.6179, 27.0385,
10.7123

■ 39.2064, 23.4040,
6.2440

■ 37.5967, 20.9188,
3.4442

■ 36.6833, 19.4438,
2.0551

■ 36.4939, 19.1368,
1.7703

Harmonies

Analogous

The Analogous color harmony consists of three colors that are next to each other on the color wheel.



69.0939, 66.1035, 72.9529



68.4111, 66.1035, 64.4119



66.2163, 66.1035, 58.3741

Triad

The Triadic color harmony groups three colors that are evenly spaced from another and form a triangle on the color wheel.



68.4111, 66.1035, 64.4119



57.8809, 66.1035, 62.8594



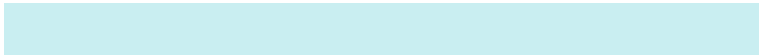
62.4903, 66.1035, 90.7869

Complementary

The Complementary color scheme is a pair of colors which are on the opposite of each other on the color wheel.



68.4111, 66.1035, 64.4119



70.5386, 79.9157, 94.9272

Split Complementary

Split-complementary colors differ from the complementary color scheme. The scheme consists of three colors, the original color and two neighbors of the complement color.



59.5600, 66.1035, 87.5407



68.4111, 66.1035, 64.4119



56.9555, 66.1035, 71.0068

Square

The Square scheme is like the rectangle color scheme, but the four colors are evenly spaced on the color wheel.



68.4111, 66.1035, 64.4119



60.1297, 66.1035, 57.5320



57.5599, 66.1035, 80.1091



65.6087, 66.1035, 88.6541

Rectangle

The Rectangle color scheme consists of four colors that form a rectangle on the color wheel.



68.4111, 66.1035, 64.4119



64.2278, 66.1035, 56.3274



57.5599, 66.1035, 80.1091



61.4515, 66.1035, 90.2824

Sweetspot

The Sweet Spot groups the original color and five complimentary colors.



68.4129, 66.1065, 64.4133



89.4174, 91.9114, 97.2293



72.6447, 66.6676, 90.1859



18.9758, 19.4382, 20.4734



0.0000, 0.0000, 0.0000



20.3446, 21.4041, 23.3091

Same Dimension

The Same Dimension uses a secret algorithm to generate beautiful new colors.



68.4129, 66.1065, 64.4133



74.6537, 70.6488, 66.8286



73.3851, 76.0509, 66.0707



15.8682, 15.9494, 16.3919



19.8257, 10.4495, 0.9720



1.6822, 0.9351, 0.0918

Inverse Universe

The Inverse Universe completely reimagines the original color for something new.



70.5386, 79.9157, 94.9272



77.5020, 89.1577, 107.7321



65.1233, 69.0851, 93.1221



16.1399, 17.7138, 20.2901



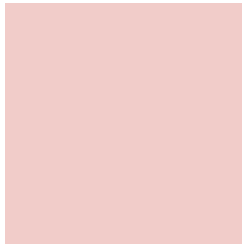
22.9490, 32.1222, 50.1185



1.9392, 2.7324, 4.1794

Previews

White Background



This preview shows how the XYZ color 68.4111, 66.1035, 64.4119 looks on a white background.

Color Contrast Check

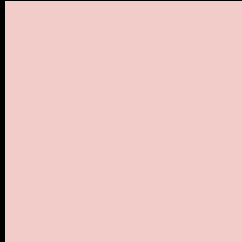
Large Text (above 18pt) WCAG AA × Fail

Any Text WCAG AA × Fail

Large Text (above 18pt) WCAG AAA × Fail

Any Text WCAG AAA × Fail

Black Background



This preview shows how the XYZ color 68.4111, 66.1035, 64.4119 looks on a black background.

Color Contrast Check

Large Text (above 18pt) WCAG AA ✓ Pass

Any Text WCAG AA ✓ Pass

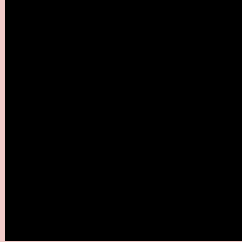
Large Text (above 18pt) WCAG AAA ✓ Pass

Any Text WCAG AAA ✓ Pass

If you want to check with other color combinations, try the [Color Contrast Checker](#).

XYZ 68.4111, 66.1035, 64.4119

Background



This preview shows how black text looks on a background with the XYZ color 68.4111, 66.1035, 64.4119.



This preview shows how white text looks on a background with the XYZ color 68.4111, 66.1035,

Color Blindness Simulation

Color vision deficiency is a very complex topic, and I could not describe the different causes any better than Wikipedia does, so if you want to learn more, you should check out their [article about color blindness](#).

Dichromacy



Original Color

68.4111, 66.1035, 64.4119

Protanopia

63.4764, 66.4002, 67.2286

Deuteranopia

67.6338, 66.0568, 64.4439



Tritanopia

70.6071, 66.3055, 74.7225

Trichromacy



Original Color

68.4111, 66.1035, 64.4119

Protanomaly

65.0636, 66.1293, 66.4618

Deuteranomaly

67.9705, 66.2304, 64.4597

Tritanomaly

69.7318, 66.2923, 70.7484

Monochromacy



Original Color

68.4111, 66.1035, 64.4119

Achromatopsia

64.5905, 67.9542, 74.0022

Achromatomaly

65.6676, 67.0890, 70.4612

CSS Examples

Text

The CSS property to change the color of the text to XYZ 68.4111, 66.1035, 64.4119 is called "color". The color property can be set on classes, ids or directly on the HTML element.

This example shows how text in the color `rgb(241, 204, 201)` looks like.

```
.text, #text, p{  
    color:rgb(241, 204, 201)  
}
```

If you want to add a text shadow in that color use the text-shadow property, you can generate a text shadow directly with our [CSS Text Shadow Generator](#).

Here you see how black text with a 4 pixel rgb(241, 204, 201) colored shadow looks like.

```
.shadow{ text-shadow: 4px 4px 2px rgb(241, 204, 201) }
```

Border

The CSS property to change the border of an element to XYZ 68.4111, 66.1035, 64.4119 is called "border". The border property can be set on classes, ids or directly on the HTML element.

This example shows the color as border, it can be applied via the CSS property "border" or "border-color".

```
.border, #border, table{ border:4px solid rgb(241, 204, 201) }
```


If only the border color should be changed use the property border-color.

```
.border{ border-color:rgb(241, 204, 201) }
```

If you want to add a box shadow in that color use:

Here you see how a box with a 4 pixel rgb(241, 204, 201) colored shadow looks like.

```
.boxshadow{ -moz-box-shadow:4px 4px 4px  
4px rgb(241, 204, 201); -webkit-box-  
shadow:4px 4px 4px 4px rgb(241, 204, 201);  
box-shadow:4px 4px 4px 4px rgb(241, 204,  
201) }
```

Background

The CSS property to change the background color of an element to XYZ 68.4111, 66.1035, 64.4119 is called "background". The background property can be set on classes, ids or directly on the HTML element.

```
.background, #background, body{  
background: rgb(241, 204, 201) }
```

If only the background color should be changed can be used:

```
.background{ background-color: rgb(241,  
204, 201) }
```

This example shows the color as background, it is applied via the CSS property "background".

To optimize and compress your CSS code, you can use our [online CSS compressor and optimizer](#) based on csstidy. If you want to create a linear or radial gradient as background or border, check our [CSS Gradient Generator](#).

Hey! You found this booklet interesting? Support Converting Colors with the new Membership Option!

The pro membership hides all ads, plus gives you double the colors in the color bucket, and more awesome pro features!

[Learn more, Memberships starting at \\$2.50/m!](#)

**Follow me
on Twitter!**

@ConvertingColor