

# Converting Colors

XYZ(68.4366, 68.1672, 70.6543)

Have a look what the booklet for  
XYZ(68.4366, 68.1672, 70.6543)  
contains.

<b>XYZ(68.2837, 68.0700, 70.5126)</b> .....	3
<b><i>Conversions</i></b> .....	4
<b><i>Details</i></b> .....	6
<b><i>Harmonies</i></b> .....	12
<b><i>Previews</i></b> .....	24
<b><i>Color Blindness Simulation</i></b> .....	28
<b><i>CSS Examples</i></b> .....	31

# Color

**XYZ(68.2837, 68.0700,  
70.5126)**

# Conversions

## Conversions Part 1

Format	Color
Hex	E9D2D2
RGB	233, 210, 210
RGB Percent	91%, 82%, 82%
CMY	0.0863, 0.1764, 0.1765
CMYK	0.00, 0.10, 0.10, 0.09
HSL	0°, 34%, 87%
HSV	0°, 10%, 91%
XYZ	68.2837, 68.0700, 70.5126
YIQ	216.8770, 13.7080, 4.8760

# Conversions

## Conversions Part 2

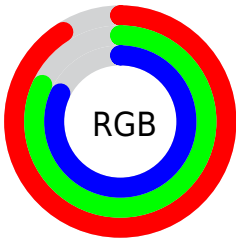
Format	Color
R <sub>Y</sub> B	233, 210, 210
Decimal	15323858
CIE Lab	86.04, 7.98, 2.90
CIE LCh	86, 8.489, 19.970
Yxy	68.0700, 0.3301, 0.3291
Android (android.graphics.Color)	4293513938 (0xFFE9D2D2)
YUV	216.8770, -3.3904, 14.1399
Hunter-Lab	82.5045, 3.3500, 7.0809

# Details

The XYZ color **68.2837, 68.0700, 70.5126** is a light color, and the websafe version is hex **CCCCCC**. A complement of this color would be **70.4248, 77.8610, 88.4084**, and the grayscale version is **65.8866, 69.3178, 75.4871**.

A 20% lighter version of the original color is **95.0500, 100.0000, 108.9000**, and **36.0207, 35.5243, 36.4109** is the 20% darker color. If you saturate the color by 10%, you get **60.2511, 56.3166, 54.5408**, and if you desaturate by 10%, it is **77.5800, 81.6729, 88.9923**.

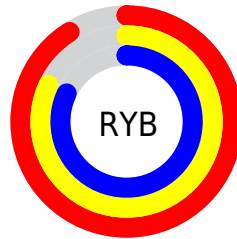
# Distribution



Red (91%)

Green (82%)

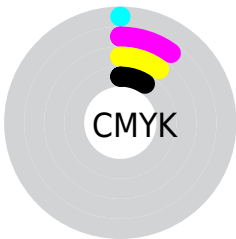
Blue (82%)



Red (91%)

Yellow (82%)

Blue (82%)

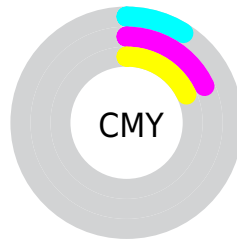


Cyan (0%)

Magenta (10%)

Yellow (10%)

Black (9%)



Cyan (9%)

Magenta (18%)

Yellow (18%)

# Brightness & Saturation Gradients

These gradients show how the XYZ color 68.2837, 68.0700, 70.5126 changes by changing the brightness by 10 percent. The first figure shows a shift by +10% for each color and the second figure -10%.

Similar to the brightness gradients but the following saturation gradients show a change of the XYZ color 68.2837, 68.0700, 70.5126 by changing the saturation by 10% instead.



68.2837, 68.0700,  
70.5126

68.2837, 68.0700,  
70.5126

443.8615,  
453.7440, 481.1855

50.4031, 49.9547,  
51.4652

115.7976,  
116.4523, 121.6274

35.9529, 35.3774,  
36.1996

146.1616,  
147.4880, 154.5319

24.5678, 23.9537,  
24.2975

181.4174,  
183.5994, 192.8925

15.8823, 15.2993,  
15.3402

221.9304,  
225.1707, 237.1276

9.5312, 9.0297,  
8.9092

268.0660,  
272.5865, 287.6560

5.1491, 4.7606,  
4.5860

320.1894,

2.3707, 2.1075,

326.2310, 344.8960

1.9520

378.6662,  
386.4887, 409.2664

■ 0.8305, 0.6688,  
0.5255

■ 0.0000, 0.0000,  
0.0000

■ 68.2837, 68.0700,  
70.5126

■ 68.2837, 68.0700,  
70.5126

■ 60.2511, 56.3166,  
54.5408

■ 77.5800, 81.6729,  
88.9923

■ 53.4223, 46.3243,  
40.9649

■ 87.4146, 96.0638,  
108.5427

■ 47.7411, 38.0110,  
29.6707

■ 43.1444, 31.2848,  
20.5330

■ 39.5634, 26.0445,  
13.4145

■ 36.9211, 22.1778,  
8.1624

■ 35.1296, 19.5561,  
4.6020

■ 34.0846, 18.0266,  
2.5256

■ 33.6099, 17.3319,  
1.5826

# Harmonies

## Analogous

The Analogous color harmony consists of three colors that are next to each other on the color wheel.



68.4580, 68.0700, 76.0011



68.2837, 68.0700, 70.5126



67.1381, 68.0700, 66.2014

# Triad

The Triadic color harmony groups three colors that are evenly spaced from another and form a triangle on the color wheel.



68.2837, 68.0700, 70.5126



61.8722, 68.0700, 67.4279



64.0482, 68.0700, 85.1914

# Complementary

The Complementary color scheme is a pair of colors which are on the opposite of each other on the color wheel.



68.2837, 68.0700, 70.5126



70.4248, 77.8610, 88.4084

# Split Complementary

Split-complementary colors differ from the complementary color scheme. The scheme consists of three colors, the original color and two neighbors of the complement color.



62.3187, 68.0700, 82.6390



68.2837, 68.0700, 70.5126



61.0792, 68.0700, 72.2637

# Square

The Square scheme is like the rectangle color scheme, but the four colors are evenly spaced on the color wheel.



68.2837, 68.0700, 70.5126



63.4275, 68.0700, 64.4833



61.2410, 68.0700, 77.8415



65.9863, 68.0700, 84.6646



# Rectangle

The Rectangle color scheme consists of four colors that form a rectangle on the color wheel.



68.2837, 68.0700, 70.5126



65.9901, 68.0700, 64.4869



61.2410, 68.0700, 77.8415



63.4238, 68.0700, 84.6603

# Sweetspot

The Sweet Spot groups the original color and five complimentary colors.



68.2856, 68.0730, 70.5141



91.4509, 94.7337, 101.7446



71.3596, 69.3009, 86.7068



19.3736, 19.9833, 21.3786



0.0000, 0.0000, 0.0000



20.3446, 21.4041, 23.3091



# Same Dimension

The Same Dimension uses a secret algorithm to generate beautiful new colors.



68.2856, 68.0730, 70.5141



81.5137, 80.1932, 81.9884



71.2266, 73.9549, 71.4944



15.0658, 15.0545, 15.6305



19.0681, 9.8305, 0.8925



1.4974, 0.7721, 0.0701



# Inverse Universe

The Inverse Universe completely reimagines the original color for something new.



70.4248, 77.8610, 88.4084



84.6728, 94.6476, 108.4138



67.2758, 71.5630, 87.3587



15.5175, 17.1214, 19.4092



24.8728, 36.3926, 49.4565



1.9532, 2.8579, 3.8836



# Previews

## White Background



This preview shows how the XYZ color 68.2837, 68.0700, 70.5126 looks on a white background.

## Color Contrast Check

Large Text (above 18pt) WCAG AA × Fail

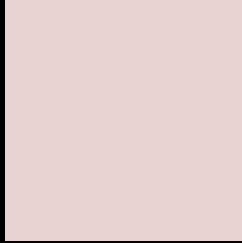
Any Text WCAG AA × Fail

Large Text (above 18pt) WCAG AAA × Fail

Any Text WCAG AAA × Fail



# Black Background



This preview shows how the XYZ color 68.2837, 68.0700, 70.5126 looks on a black background.

## Color Contrast Check

Large Text (above 18pt) WCAG AA ✓ Pass

Any Text WCAG AA ✓ Pass

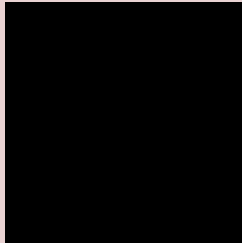
Large Text (above 18pt) WCAG AAA ✓ Pass

Any Text WCAG AAA ✓ Pass

If you want to check with other color combinations, try the [Color Contrast Checker](#).

**XYZ 68.2837, 68.0700, 70.5126**

## **Background**



This preview shows how black text looks on a background with the XYZ color 68.2837, 68.0700, 70.5126.



This preview shows how white text looks on a background with the XYZ color 68.2837, 68.0700,



# Color Blindness Simulation

Color vision deficiency is a very complex topic, and I could not describe the different causes any better than Wikipedia does, so if you want to learn more, you should check out their [article about color blindness](#).

## Dichromacy



### Original Color

68.2837, 68.0700, 70.5126

### Protanopia

65.4454, 68.0622, 71.9753

### Deuteranopia

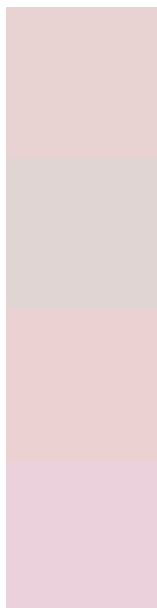
69.4486, 67.9420, 70.4266



## Tritanopia

70.2714, 68.1557, 79.9727

# Trichromacy



## Original Color

68.2837, 68.0700, 70.5126

## Protanomaly

66.6035, 68.2992, 71.3007

## Deuteranomaly

69.0254, 68.0869, 70.4768

## Tritanomaly

69.5183, 68.2078, 76.5192

# Monochromacy



## Original Color

68.2837, 68.0700, 70.5126

## Achromatopsia

65.9525, 69.3872, 75.5626

## Achromatomaly

66.6156, 68.6361, 73.3554

# CSS Examples

## Text

The CSS property to change the color of the text to XYZ 68.2837, 68.0700, 70.5126 is called "color". The color property can be set on classes, ids or directly on the HTML element.

This example shows how text in the color `rgb(233, 210, 210)` looks like.

```
.text, #text, p{  
    color:rgb(233, 210, 210)  
}
```

If you want to add a text shadow in that color use the text-shadow property, you can generate a text shadow directly with our [CSS Text Shadow Generator](#).

Here you see how black text with a 4 pixel rgb(233, 210, 210) colored shadow looks like.

```
.shadow{ text-shadow: 4px 4px 2px rgb(233, 210, 210) }
```

## Border

The CSS property to change the border of an element to XYZ 68.2837, 68.0700, 70.5126 is called "border". The border property can be set on classes, ids or directly on the HTML element.

This example shows the color as border, it can be applied via the CSS property "border" or "border-color".

```
.border, #border, table{ border:4px solid rgb(233, 210, 210) }
```



If only the border color should be changed use the property `border-color`.

```
.border{ border-color:rgb(233, 210, 210) }
```

If you want to add a box shadow in that color use:

Here you see how a box with a 4 pixel `rgb(233, 210, 210)` colored shadow looks like.

```
.boxshadow{ -moz-box-shadow:4px 4px 4px  
4px rgb(233, 210, 210); -webkit-box-  
shadow:4px 4px 4px 4px rgb(233, 210, 210);  
box-shadow:4px 4px 4px 4px rgb(233, 210,  
210) }
```

# Background

The CSS property to change the background color of an element to XYZ 68.2837, 68.0700, 70.5126 is called "background". The background property can be set on classes, ids or directly on the HTML element.

```
.background, #background, body{  
background: rgb(233, 210, 210) }
```

If only the background color should be changed can be used:

```
.background{ background-color: rgb(233,  
210, 210) }
```

This example shows the color as background, it is applied via the CSS property "background".

To optimize and compress your CSS code, you can use our [online CSS compressor and optimizer](#) based on csstidy. If you want to create a linear or radial gradient as background or border, check our [CSS Gradient Generator](#).

Hey! You found this booklet interesting? Support Converting Colors with the new Membership Option!

The pro membership hides all ads, plus gives you double the colors in the color bucket, and more awesome pro features!

**[Learn more, Memberships starting at \\$2.50/m!](#)**

**Follow me  
on Twitter!**

@ConvertingColor