

Converting Colors

XYZ(68.4444, 69.0434, 63.7521)

Have a look what the booklet for
XYZ(68.4444, 69.0434, 63.7521)
contains.

XYZ(68.4444, 69.0434, 63.7521)	3
<i>Conversions</i>	4
<i>Details</i>	6
<i>Harmonies</i>	12
<i>Previews</i>	24
<i>Color Blindness Simulation</i>	28
<i>CSS Examples</i>	31

Color

**XYZ(68.4444, 69.0434,
63.7521)**

Conversions

Conversions Part 1

Format	Color
Hex	ECD4C7
RGB	236, 212, 199
RGB Percent	93%, 83%, 78%
CMY	0.0745, 0.1686, 0.2196
CMYK	0.00, 0.10, 0.16, 0.07
HSL	21°, 49%, 85%
HSV	21°, 16%, 93%
XYZ	68.4444, 69.0434, 63.7521
YIQ	217.6940, 18.4770, 1.0450

Conversions

Conversions Part 2

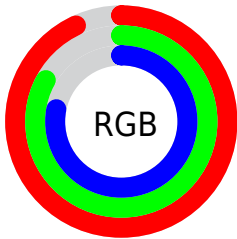
Format	Color
R _Y B	236, 219, 199
Decimal	15520967
CIE Lab	86.53, 6.24, 9.45
CIE LCh	87, 11.327, 56.551
Yxy	69.0434, 0.3401, 0.3431
Android (android.graphics.Color)	4293711047 (0xFFECD4C7)
YUV	217.6940, -9.2161, 16.0544
Hunter-Lab	83.0924, 1.6215, 12.6748

Details

The XYZ color **68.4444, 69.0434, 63.7521** is a light color, and the websafe version is hex **FFCCCC**. A complement of this color would be **65.0808, 70.9720, 89.6264**, and the grayscale version is **66.4840, 69.9463, 76.1715**.

A 20% lighter version of the original color is **95.0500, 100.0000, 108.9000**, and **35.9902, 35.8616, 31.8132** is the 20% darker color. If you saturate the color by 10%, you get **62.2680, 60.7406, 49.2067**, and if you desaturate by 10%, it is **75.4122, 78.2478, 80.6594**.

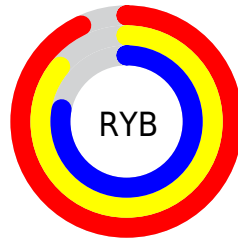
Distribution



Red (93%)

Green (83%)

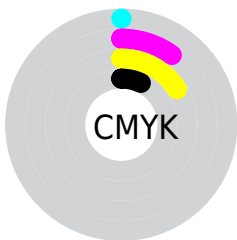
Blue (78%)



Red (93%)

Yellow (86%)

Blue (78%)

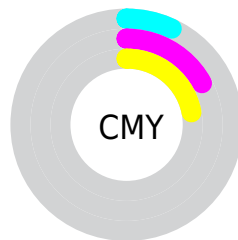


Cyan (0%)

Magenta (10%)

Yellow (16%)

Black (7%)



Cyan (7%)

Magenta (17%)

Yellow (22%)

Brightness & Saturation Gradients

These gradients show how the XYZ color 68.4444, 69.0434, 63.7521 changes by changing the brightness by 10 percent. The first figure shows a shift by +10% for each color and the second figure -10%.

Similar to the brightness gradients but the following saturation gradients show a change of the XYZ color 68.4444, 69.0434, 63.7521 by changing the saturation by 10% instead.

68.4444, 69.0434,
63.7521

68.4444, 69.0434,
63.7521

444.4210,
457.1840, 456.4767

50.5344, 50.7471,
46.0050

116.0261,
117.8436, 111.8499

36.0577, 36.0073,
31.9011

146.4284,
149.1162, 143.0376

24.6491, 24.4399,
21.0218

181.7256,
185.4830, 179.5427

15.9431, 15.6602,
12.9485

222.2829,
227.3284, 221.7837

9.5745, 9.2841,
7.2628

268.4658,
275.0368, 270.1790

5.1779, 4.9269,
3.5461

320.6395,

2.3878, 2.2044,

328.9926, 325.1473

1.3798

379.1695,
389.5802, 387.1070

■ 0.8390, 0.7224,
0.1259

■ 0.0000, 0.0000,
0.0000

■ 68.4444, 69.0434,
63.7521

■ 68.4444, 69.0434,
63.7521

■ 62.2680, 60.7406,
49.2067

■ 75.4122, 78.2478,
80.6594

■ 56.8480, 53.3022,
36.9127

■ 83.1938, 88.3710,
100.0237

■ 52.1545, 46.7020,
26.7571

■ 88.4024, 96.5730,
108.5889

■ 48.1537, 40.9087,
18.6156

■ 44.8086, 35.8891,
12.3504

■ 42.0784, 31.6073,
7.8066

■ 39.9165, 28.0238,
4.8037

■ 38.2677, 25.0943,
3.1197

■ 37.6816, 24.0116,
2.6487

Harmonies

Analogous

The Analogous color harmony consists of three colors that are next to each other on the color wheel.



70.2417, 69.0434, 68.9002



68.4444, 69.0434, 63.7521



65.9277, 69.0434, 61.6547

Triad

The Triadic color harmony groups three colors that are evenly spaced from another and form a triangle on the color wheel.



68.4444, 69.0434, 63.7521



60.7147, 69.0434, 74.3105



67.9051, 69.0434, 88.8585

Complementary

The Complementary color scheme is a pair of colors which are on the opposite of each other on the color wheel.



68.4444, 69.0434, 63.7521



65.0808, 70.9720, 89.6264

Split Complementary

Split-complementary colors differ from the complementary color scheme. The scheme consists of three colors, the original color and two neighbors of the complement color.



65.3206, 69.0434, 90.5436



68.4444, 69.0434, 63.7521



61.2127, 69.0434, 81.8228

Square

The Square scheme is like the rectangle color scheme, but the four colors are evenly spaced on the color wheel.



68.4444, 69.0434, 63.7521



61.5029, 69.0434, 67.4893



62.8815, 69.0434, 87.8902



69.9245, 69.0434, 83.4264

Rectangle

The Rectangle color scheme consists of four colors that form a rectangle on the color wheel.



68.4444, 69.0434, 63.7521



64.1967, 69.0434, 62.1577



62.8815, 69.0434, 87.8902



67.0716, 69.0434, 89.8970

Sweetspot

The Sweet Spot groups the original color and five complimentary colors.



68.4463, 69.0465, 63.7536



90.4832, 94.0431, 97.5846



68.3423, 64.0110, 78.6015



19.2340, 19.9547, 20.5595



0.0000, 0.0000, 0.0000



20.3446, 21.4041, 23.3091

Same Dimension

The Same Dimension uses a secret algorithm to generate beautiful new colors.



68.4463, 69.0465, 63.7536



78.9901, 78.8282, 69.7956



73.3238, 78.8016, 65.3794



15.4985, 15.9201, 15.7747



20.8806, 13.4555, 1.4966



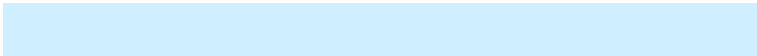
1.7271, 1.2316, 0.1467

Inverse Universe

The Inverse Universe completely reimagines the original color for something new.



65.0808, 70.9720, 89.6264



74.2227, 81.5529, 106.4371



60.4182, 61.6468, 88.0722



15.0464, 16.1792, 19.2521



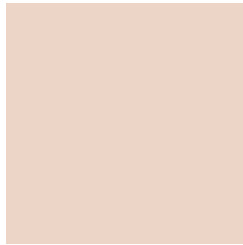
14.7555, 16.1579, 46.0841



1.2484, 1.4483, 3.6486

Previews

White Background



This preview shows how the XYZ color 68.4444, 69.0434, 63.7521 looks on a white background.

Color Contrast Check

Large Text (above 18pt) WCAG AA × Fail

Any Text WCAG AA × Fail

Large Text (above 18pt) WCAG AAA × Fail

Any Text WCAG AAA × Fail

Black Background



This preview shows how the XYZ color 68.4444, 69.0434, 63.7521 looks on a black background.

Color Contrast Check

Large Text (above 18pt) WCAG AA ✓ Pass

Any Text WCAG AA ✓ Pass

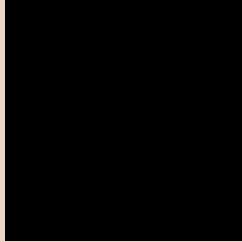
Large Text (above 18pt) WCAG AAA ✓ Pass

Any Text WCAG AAA ✓ Pass

If you want to check with other color combinations, try the [Color Contrast Checker](#).

XYZ 68.4444, 69.0434, 63.7521

Background



This preview shows how black text looks on a background with the XYZ color 68.4444, 69.0434, 63.7521.

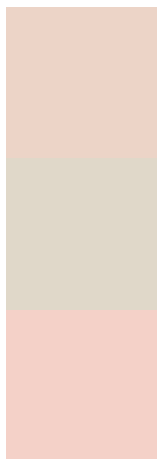


This preview shows how white text looks on a background with the XYZ color 68.4444, 69.0434,

Color Blindness Simulation

Color vision deficiency is a very complex topic, and I could not describe the different causes any better than Wikipedia does, so if you want to learn more, you should check out their [article about color blindness](#).

Dichromacy



Original Color

68.4444, 69.0434, 63.7521

Protanopia

65.8390, 69.1761, 65.1406

Deuteranopia

70.5340, 69.0042, 64.2452



Tritanopia

71.6070, 68.8443, 80.0352

Trichromacy



Original Color

68.4444, 69.0434, 63.7521

Protanomaly

66.7207, 69.2650, 64.4965

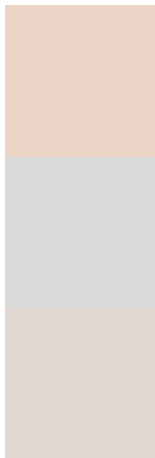
Deuteranomaly

69.7475, 68.9641, 64.2789

Tritanomaly

70.3261, 68.6844, 73.8408

Monochromacy



Original Color

68.4444, 69.0434, 63.7521

Achromatopsia

66.6397, 70.1102, 76.3500

Achromatomaly

67.3651, 69.8224, 71.5546

CSS Examples

Text

The CSS property to change the color of the text to XYZ 68.4444, 69.0434, 63.7521 is called "color". The color property can be set on classes, ids or directly on the HTML element.

This example shows how text in the color `rgb(236, 212, 199)` looks like.

```
.text, #text, p{  
    color:rgb(236, 212, 199)  
}
```

If you want to add a text shadow in that color use the text-shadow property, you can generate a text shadow directly with our [CSS Text Shadow Generator](#).

Here you see how black text with a 4 pixel rgb(236, 212, 199) colored shadow looks like.

```
.shadow{ text-shadow: 4px 4px 2px rgb(236, 212, 199) }
```

Border

The CSS property to change the border of an element to XYZ 68.4444, 69.0434, 63.7521 is called "border". The border property can be set on classes, ids or directly on the HTML element.

This example shows the color as border, it can be applied via the CSS property "border" or "border-color".

```
.border, #border, table{ border:4px solid rgb(236, 212, 199) }
```


If only the border color should be changed use the property border-color.

```
.border{ border-color:rgb(236, 212, 199) }
```

If you want to add a box shadow in that color use:

Here you see how a box with a 4 pixel rgb(236, 212, 199) colored shadow looks like.

```
.boxshadow{ -moz-box-shadow:4px 4px 4px  
4px rgb(236, 212, 199); -webkit-box-  
shadow:4px 4px 4px 4px rgb(236, 212, 199);  
box-shadow:4px 4px 4px 4px rgb(236, 212,  
199) }
```

Background

The CSS property to change the background color of an element to XYZ 68.4444, 69.0434, 63.7521 is called "background". The background property can be set on classes, ids or directly on the HTML element.

```
.background, #background, body{  
background: rgb(236, 212, 199) }
```

If only the background color should be changed can be used:

```
.background{ background-color: rgb(236,  
212, 199) }
```

This example shows the color as background, it is applied via the CSS property "background".

To optimize and compress your CSS code, you can use our [online CSS compressor and optimizer](#) based on csstidy. If you want to create a linear or radial gradient as background or border, check our [CSS Gradient Generator](#).

Hey! You found this booklet interesting? Support Converting Colors with the new Membership Option!

The pro membership hides all ads, plus gives you double the colors in the color bucket, and more awesome pro features!

[Learn more, Memberships starting at \\$2.50/m!](#)

**Follow me
on Twitter!**

@ConvertingColor