

Converting Colors

XYZ(68.5240, 69.0660, 67.5810)

Have a look what the booklet for
XYZ(68.5240, 69.0660, 67.5810)
contains.

XYZ(68.4946, 68.9872, 67.4634)	3
<i>Conversions</i>	4
<i>Details</i>	6
<i>Harmonies</i>	12
<i>Previews</i>	24
<i>Color Blindness Simulation</i>	28
<i>CSS Examples</i>	31

Color

**XYZ(68.4946, 68.9872,
67.4634)**

Conversions

Conversions Part 1

Format	Color
Hex	EAD4CD
RGB	234, 212, 205
RGB Percent	92%, 83%, 80%
CMY	0.0823, 0.1686, 0.1961
CMYK	0.00, 0.09, 0.12, 0.08
HSL	14°, 41%, 86%
HSV	14°, 12%, 92%
XYZ	68.4946, 68.9872, 67.4634
YIQ	217.7800, 15.3590, 2.4870

Conversions

Conversions Part 2

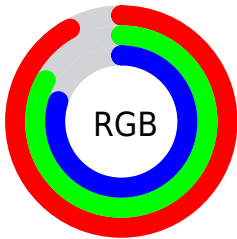
Format	Color
RYB	234, 214, 205
Decimal	15389901
CIELab	86.50, 6.47, 6.22
CIELCh	86, 8.975, 43.846
Yxy	68.9872, 0.3342, 0.3366
Android (android.graphics.Color)	4293579981 (0xFFEAD4CD)
YUV	217.7800, -6.3005, 14.2249
Hunter-Lab	83.0585, 1.8484, 9.9833

Details

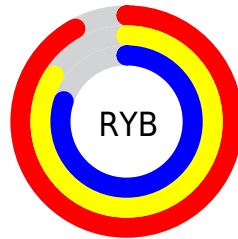
The XYZ color **68.4946, 68.9872, 67.4634** is a light color, and the websafe version is hex **CCCCCC**. A complement of this color would be **67.4968, 73.8562, 88.5407**, and the grayscale version is **66.5252, 69.9897, 76.2188**.

A 20% lighter version of the original color is **95.0500, 100.0000, 108.9000**, and **36.0030, 35.8133, 34.2932** is the 20% darker color. If you saturate the color by 10%, you get **61.6835, 59.5518, 52.2839**, and if you desaturate by 10%, it is **76.2198, 79.5731, 85.0334**.

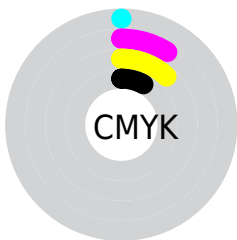
Distribution



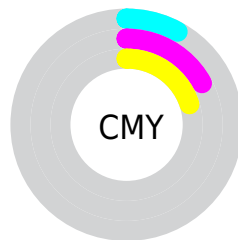
- Red (92%)
- Green (83%)
- Blue (80%)



- Red (92%)
- Yellow (84%)
- Blue (80%)



- Cyan (0%)
- Magenta (9%)
- Yellow (12%)
- Black (8%)



- Cyan (8%)
- Magenta (17%)
- Yellow (20%)

Brightness & Saturation Gradients

These gradients show how the XYZ color 68.4946, 68.9872, 67.4634 changes by changing the brightness by 10 percent. The first figure shows a shift by +10% for each color and the second figure -10%.

Similar to the brightness gradients but the following saturation gradients show a change of the XYZ color 68.4946, 68.9872, 67.4634 by changing the saturation by 10% instead.

68.4946, 68.9872,
67.4634

68.4946, 68.9872,
67.4634

444.5957,
456.9858, 470.1388

50.5754, 50.7013,
48.9974

116.0975,
117.7633, 117.2311

36.0904, 35.9709,
34.2518

146.5118,
149.0223, 149.3699

24.6745, 24.4117,
22.8082

181.8218,
185.3744, 186.9032

15.9621, 15.6393,
14.2480

222.3930,
227.2040, 230.2498

9.5880, 9.2693,
8.1526

268.5906,
274.8956, 279.8281

5.1868, 4.9173,
4.1036

320.7800,

2.3932, 2.1988,

328.8335, 336.0567

1.6823

379.3266,
389.4021, 399.3541

■ 0.8417, 0.7193,
0.3486

■ 0.0000, 0.0000,
0.0000

■ 68.4946, 68.9872,
67.4634

■ 68.4946, 68.9872,
67.4634

■ 61.6835, 59.5518,
52.2839

■ 76.2198, 79.5731,
85.0334

■ 55.7462, 51.2189,
39.3868

■ 84.8858, 91.3374,
105.0867

■ 50.6482, 43.9504,
28.6622

■ 87.7420, 96.2326,
108.5580

■ 46.3501, 37.7027,
19.9894

■ 42.8093, 32.4288,
13.2359

■ 39.9789, 28.0783,
8.2532

■ 37.8064, 24.5955,
4.8710

■ 36.2309, 21.9184,
2.8849

■ 35.3714, 20.3714,
2.0678

Harmonies

Analogous

The Analogous color harmony consists of three colors that are next to each other on the color wheel.



69.5271, 68.9872, 72.4098



68.4946, 68.9872, 67.4634



66.6883, 68.9872, 64.6506

Triad

The Triadic color harmony groups three colors that are evenly spaced from another and form a triangle on the color wheel.



68.4946, 68.9872, 67.4634



61.8065, 68.9872, 71.9761



66.5312, 68.9872, 86.7838

Complementary

The Complementary color scheme is a pair of colors which are on the opposite of each other on the color wheel.



68.4946, 68.9872, 67.4634



67.4968, 73.8562, 88.5407

Split Complementary

Split-complementary colors differ from the complementary color scheme. The scheme consists of three colors, the original color and two neighbors of the complement color.



64.4648, 68.9872, 86.6525



68.4946, 68.9872, 67.4634



61.7664, 68.9872, 77.8874

Square

The Square scheme is like the rectangle color scheme, but the four colors are evenly spaced on the color wheel.



68.4946, 68.9872, 67.4634



62.8410, 68.9872, 67.1604



62.7304, 68.9872, 83.3250



68.3775, 68.9872, 83.6749

Rectangle

The Rectangle color scheme consists of four colors that form a rectangle on the color wheel.



68.4946, 68.9872, 67.4634



65.3026, 68.9872, 64.2658



62.7304, 68.9872, 83.3250



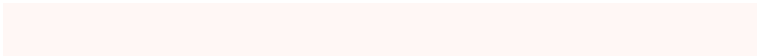
65.8386, 68.9872, 87.1220

Sweetspot

The Sweet Spot groups the original color and five complimentary colors.



68.4965, 68.9903, 67.4649



91.0323, 94.5232, 99.6731



69.6611, 66.7149, 82.0485



19.3274, 20.0169, 20.9744



0.0000, 0.0000, 0.0000



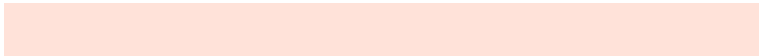
20.3446, 21.4041, 23.3091

Same Dimension

The Same Dimension uses a secret algorithm to generate beautiful new colors.



68.4965, 68.9903, 67.4649



80.9251, 80.6432, 76.7758



72.2208, 76.4388, 68.7063



15.3609, 15.6448, 15.7289



19.9584, 11.6111, 1.1892



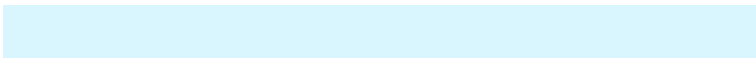
1.6404, 1.0580, 0.1178

Inverse Universe

The Inverse Universe completely reimagines the original color for something new.



67.4968, 73.8562, 88.5407



79.4743, 87.6999, 107.3468



63.7562, 66.3750, 87.2939



15.1915, 16.4695, 19.3005



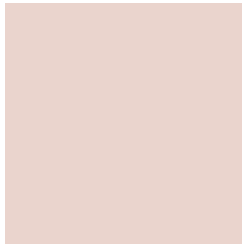
17.3370, 21.3209, 46.9446



1.4351, 1.8216, 3.7108

Previews

White Background



This preview shows how the XYZ color 68.4946, 68.9872, 67.4634 looks on a white background.

Color Contrast Check

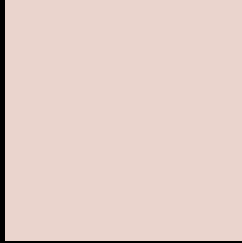
Large Text (above 18pt) WCAG AA × Fail

Any Text WCAG AA × Fail

Large Text (above 18pt) WCAG AAA × Fail

Any Text WCAG AAA × Fail

Black Background



This preview shows how the XYZ color 68.4946, 68.9872, 67.4634 looks on a black background.

Color Contrast Check

Large Text (above 18pt) WCAG AA ✓ Pass

Any Text WCAG AA ✓ Pass

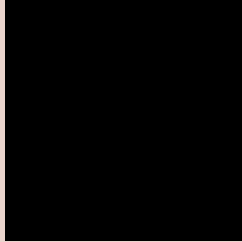
Large Text (above 18pt) WCAG AAA ✓ Pass

Any Text WCAG AAA ✓ Pass

If you want to check with other color combinations, try the [Color Contrast Checker](#).

XYZ 68.4946, 68.9872, 67.4634

Background



This preview shows how black text looks on a background with the XYZ color 68.4946, 68.9872, 67.4634.



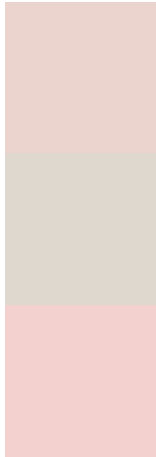
This preview shows how white text looks on a background with the XYZ color 68.4946, 68.9872,

67.4634.

Color Blindness Simulation

Color vision deficiency is a very complex topic, and I could not describe the different causes any better than Wikipedia does, so if you want to learn more, you should check out their [article about color blindness](#).

Dichromacy



Original Color

68.4946, 68.9872, 67.4634

Protanopia

66.2498, 69.3047, 68.9169

Deuteranopia

70.5590, 68.9344, 67.9793



Tritanopia

71.3161, 69.0417, 80.8018

Trichromacy



Original Color

68.4946, 68.9872, 67.4634

Protanomaly

67.1196, 69.3880, 68.2482

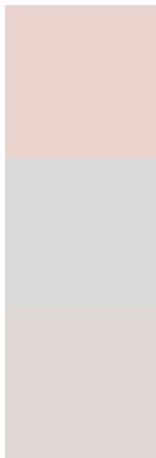
Deuteranomaly

69.7838, 68.9001, 68.0136

Tritanomaly

70.2936, 68.9880, 75.9408

Monochromacy



Original Color

68.4946, 68.9872, 67.4634

Achromatopsia

66.6397, 70.1102, 76.3500

Achromatomaly

67.3066, 69.7631, 72.8690

CSS Examples

Text

The CSS property to change the color of the text to XYZ 68.4946, 68.9872, 67.4634 is called "color". The color property can be set on classes, ids or directly on the HTML element.

This example shows how text in the color rgb(234, 212, 205) looks like.

```
.text, #text, p{  
    color:rgb(234, 212, 205)  
}
```

If you want to add a text shadow in that color use the text-shadow property, you can generate a text shadow directly with our [CSS Text Shadow Generator](#).

Here you see how black text with a 4 pixel rgb(234, 212, 205) colored shadow looks like.

```
.shadow{ text-shadow: 4px 4px 2px rgb(234, 212, 205) }
```

Border

The CSS property to change the border of an element to XYZ 68.4946, 68.9872, 67.4634 is called "border". The border property can be set on classes, ids or directly on the HTML element.

This example shows the color as border, it can be applied via the CSS property "border" or "border-color".

```
.border, #border, table{ border:4px solid rgb(234, 212, 205) }
```


If only the border color should be changed use the property `border-color`.

```
.border{ border-color:rgb(234, 212, 205) }
```

If you want to add a box shadow in that color use:

Here you see how a box with a 4 pixel `rgb(234, 212, 205)` colored shadow looks like.

```
.boxshadow{ -moz-box-shadow:4px 4px 4px  
4px rgb(234, 212, 205); -webkit-box-  
shadow:4px 4px 4px 4px rgb(234, 212, 205);  
box-shadow:4px 4px 4px 4px rgb(234, 212,  
205) }
```

Background

The CSS property to change the background color of an element to XYZ 68.4946, 68.9872, 67.4634 is called "background". The background property can be set on classes, ids or directly on the HTML element.

```
.background, #background, body{  
background: rgb(234, 212, 205) }
```

If only the background color should be changed can be used:

```
.background{ background-color: rgb(234,  
212, 205) }
```

This example shows the color as background, it is applied via the CSS property "background".

To optimize and compress your CSS code, you can use our [online CSS compressor and optimizer](#) based on csstidy. If you want to create a linear or radial gradient as background or border, check our [CSS Gradient Generator](#).

Hey! You found this booklet interesting? Support Converting Colors with the new Membership Option!

The pro membership hides all ads, plus gives you double the colors in the color bucket, and more awesome pro features!

[Learn more, Memberships starting at \\$2.50/m!](#)

**Follow me
on Twitter!**

@ConvertingColor