

Converting Colors

XYZ(68.7059, 68.9962, 71.9838)

Have a look what the booklet for
XYZ(68.7059, 68.9962, 71.9838)
contains.

XYZ(68.7059, 68.9962, 71.9838)	3
<i>Conversions</i>	4
<i>Details</i>	6
<i>Harmonies</i>	12
<i>Previews</i>	24
<i>Color Blindness Simulation</i>	28
<i>CSS Examples</i>	31

Color

**XYZ(68.7059, 68.9962,
71.9838)**

Conversions

Conversions Part 1

Format	Color
Hex	E8D4D4
RGB	232, 212, 212
RGB Percent	91%, 83%, 83%
CMY	0.0902, 0.1686, 0.1686
CMYK	0.00, 0.09, 0.09, 0.09
HSL	0°, 30%, 87%
HSV	0°, 9%, 91%
XYZ	68.7059, 68.9962, 71.9838
YIQ	217.9800, 11.9200, 4.2400

Conversions

Conversions Part 2

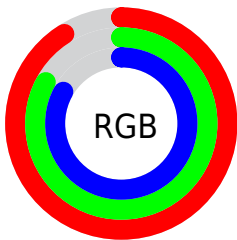
Format	Color
R _Y B	232, 212, 212
Decimal	15258836
CIE Lab	86.50, 6.91, 2.50
CIE LCh	87, 7.351, 19.868
Yxy	68.9962, 0.3277, 0.3290
Android (android.graphics.Color)	4293448916 (0xFFE8D4D4)
YUV	217.9800, -2.9481, 12.2955
Hunter-Lab	83.0640, 2.2834, 6.7636

Details

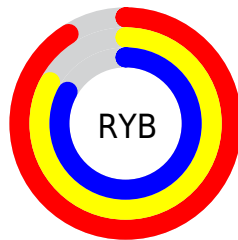
The XYZ color **68.7059, 68.9962, 71.9838** is a light color, and the websafe version is hex **CCCCCC**. A complement of this color would be **70.5734, 77.5354, 87.5911**, and the grayscale version is **66.6423, 70.1129, 76.3530**.

A 20% lighter version of the original color is **95.0500, 100.0000, 108.9000**, and **36.0473, 35.7784, 36.9043** is the 20% darker color. If you saturate the color by 10%, you get **60.5996, 57.1349, 55.8654**, and if you desaturate by 10%, it is **78.0696, 82.6977, 90.5977**.

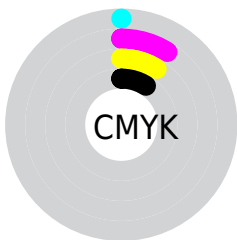
Distribution



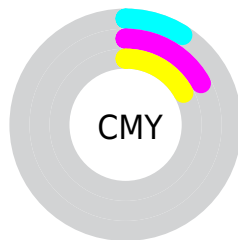
- Red (91%)
- Green (83%)
- Blue (83%)



- Red (91%)
- Yellow (83%)
- Blue (83%)



- Cyan (0%)
- Magenta (9%)
- Yellow (9%)
- Black (9%)



- Cyan (9%)
- Magenta (17%)
- Yellow (17%)

Brightness & Saturation Gradients

These gradients show how the XYZ color 68.7059, 68.9962, 71.9838 changes by changing the brightness by 10 percent. The first figure shows a shift by +10% for each color and the second figure -10%.

Similar to the brightness gradients but the following saturation gradients show a change of the XYZ color 68.7059, 68.9962, 71.9838 by changing the saturation by 10% instead.

68.7059, 68.9962,
71.9838

68.7059, 68.9962,
71.9838

445.3306,
457.0176, 486.4612

50.7480, 50.7086,
52.6587

116.3978,
117.7761, 123.7410

36.2283, 35.9768,
37.1445

146.8625,
149.0373, 157.0102

24.7815, 24.4163,
25.0227

182.2268,
185.3918, 195.7644

16.0422, 15.6427,
15.8748

222.8562,
227.2239, 240.4224

9.6451, 9.2717,
9.2822

269.1159,
274.9182, 291.4025

5.2247, 4.9188,
4.8264

321.3713,

2.4158, 2.1997,

328.8590, 349.1233

2.0888

379.9877,
389.4306, 414.0034

■ 0.8530, 0.7198,
0.6091

■ 0.0000, 0.0000,
0.0000

■ 68.7059, 68.9962,
71.9838

■ 68.7059, 68.9962,
71.9838

■ 60.5996, 57.1349,
55.8654

■ 78.0696, 82.6977,
90.5977

■ 53.6917, 47.0269,
42.1322

■ 87.0891, 95.8960,
108.5274

■ 47.9272, 38.5918,
30.6723

■ 43.2444, 31.7395,
21.3632

■ 39.5758, 26.3712,
14.0708

■ 36.8466, 22.3774,
8.6460

■ 34.9714, 19.6331,
4.9190

■ 33.8493, 17.9908,
2.6894

■ 33.3319, 17.2335,
1.6615

Harmonies

Analogous

The Analogous color harmony consists of three colors that are next to each other on the color wheel.



68.8543, 68.9962, 76.7864



68.7059, 68.9962, 71.9838



67.7115, 68.9962, 68.1829

Triad

The Triadic color harmony groups three colors that are evenly spaced from another and form a triangle on the color wheel.



68.7059, 68.9962, 71.9838



63.1077, 68.9962, 69.2430



65.0046, 68.9962, 84.7371

Complementary

The Complementary color scheme is a pair of colors which are on the opposite of each other on the color wheel.



68.7059, 68.9962, 71.9838



70.5734, 77.5354, 87.5911

Split Complementary

Split-complementary colors differ from the complementary color scheme. The scheme consists of three colors, the original color and two neighbors of the complement color.



63.4914, 68.9962, 82.5233



68.7059, 68.9962, 71.9838



62.4089, 68.9962, 73.4880

Square

The Square scheme is like the rectangle color scheme, but the four colors are evenly spaced on the color wheel.



68.7059, 68.9962, 71.9838



64.4726, 68.9962, 66.6485



62.5481, 68.9962, 78.3566



66.6976, 68.9962, 84.2916

Rectangle

The Rectangle color scheme consists of four colors that form a rectangle on the color wheel.



68.7059, 68.9962, 71.9838



66.7120, 68.9962, 66.6622



62.5481, 68.9962, 78.3566



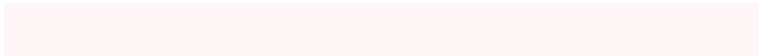
64.4586, 68.9962, 84.2757

Sweetspot

The Sweet Spot groups the original color and five complimentary colors.



68.7078, 68.9992, 71.9853



91.4509, 94.7337, 101.7446



71.3887, 70.0700, 86.1072



19.3736, 19.9833, 21.3786



0.0000, 0.0000, 0.0000



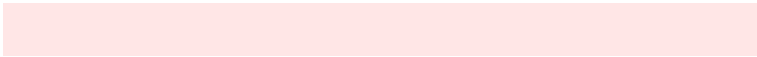
20.3446, 21.4041, 23.3091

Same Dimension

The Same Dimension uses a secret algorithm to generate beautiful new colors.



68.7078, 68.9992, 71.9853



83.6120, 83.2636, 86.1599



71.2847, 74.1529, 72.8442



14.3773, 14.3685, 14.9201



18.4754, 9.5250, 0.8647



1.3653, 0.7040, 0.0639

Inverse Universe

The Inverse Universe completely reimagines the original color for something new.



70.5734, 77.5354, 87.5911



86.2813, 95.4773, 108.4892



67.8392, 72.0669, 86.6797



14.8073, 16.3359, 18.5171



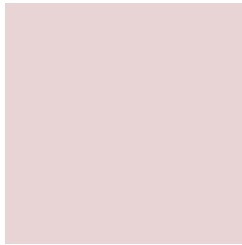
24.0994, 35.2609, 47.9190



1.7809, 2.6058, 3.5411

Previews

White Background



This preview shows how the XYZ color 68.7059, 68.9962, 71.9838 looks on a white background.

Color Contrast Check

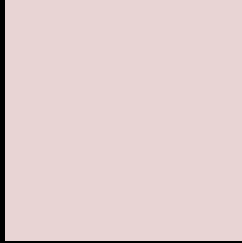
Large Text (above 18pt) WCAG AA × Fail

Any Text WCAG AA × Fail

Large Text (above 18pt) WCAG AAA × Fail

Any Text WCAG AAA × Fail

Black Background



This preview shows how the XYZ color 68.7059, 68.9962, 71.9838 looks on a black background.

Color Contrast Check

Large Text (above 18pt) WCAG AA ✓ Pass

Any Text WCAG AA ✓ Pass

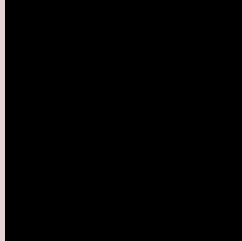
Large Text (above 18pt) WCAG AAA ✓ Pass

Any Text WCAG AAA ✓ Pass

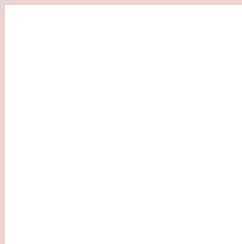
If you want to check with other color combinations, try the [Color Contrast Checker](#).

XYZ 68.7059, 68.9962, 71.9838

Background



This preview shows how black text looks on a background with the XYZ color 68.7059, 68.9962, 71.9838.



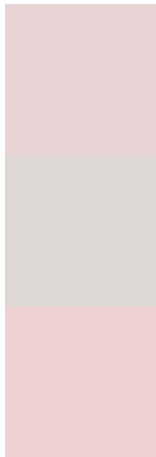
This preview shows how white text looks on a background with the XYZ color 68.7059, 68.9962,

71.9838.

Color Blindness Simulation

Color vision deficiency is a very complex topic, and I could not describe the different causes any better than Wikipedia does, so if you want to learn more, you should check out their [article about color blindness](#).

Dichromacy



Original Color

68.7059, 68.9962, 71.9838

Protanopia

66.5123, 69.3389, 73.4965

Deuteranopia

70.2807, 68.7051, 71.8446



Tritanopia

70.7057, 69.0766, 81.5580

Trichromacy



Original Color

68.7059, 68.9962, 71.9838

Protanomaly

67.3620, 69.4125, 72.7984

Deuteranomaly

69.5223, 68.6795, 71.8796

Tritanomaly

69.9497, 69.1326, 78.0638

Monochromacy



Original Color

68.7059, 68.9962, 71.9838

Achromatopsia

66.6397, 70.1102, 76.3500

Achromatomaly

67.3820, 69.7576, 74.8789

CSS Examples

Text

The CSS property to change the color of the text to XYZ 68.7059, 68.9962, 71.9838 is called "color". The color property can be set on classes, ids or directly on the HTML element.

This example shows how text in the color rgb(232, 212, 212) looks like.

```
.text, #text, p{  
    color:rgb(232, 212, 212)  
}
```

If you want to add a text shadow in that color use the text-shadow property, you can generate a text shadow directly with our [CSS Text Shadow Generator](#).

Here you see how black text with a 4 pixel rgb(232, 212, 212) colored shadow looks like.

```
.shadow{ text-shadow: 4px 4px 2px rgb(232, 212, 212) }
```

Border

The CSS property to change the border of an element to XYZ 68.7059, 68.9962, 71.9838 is called "border". The border property can be set on classes, ids or directly on the HTML element.

This example shows the color as border, it can be applied via the CSS property "border" or "border-color".

```
.border, #border, table{ border:4px solid rgb(232, 212, 212) }
```


If only the border color should be changed use the property `border-color`.

```
.border{ border-color:rgb(232, 212, 212) }
```

If you want to add a box shadow in that color use:

Here you see how a box with a 4 pixel `rgb(232, 212, 212)` colored shadow looks like.

```
.boxshadow{ -moz-box-shadow:4px 4px 4px  
4px rgb(232, 212, 212); -webkit-box-  
shadow:4px 4px 4px 4px rgb(232, 212, 212);  
box-shadow:4px 4px 4px 4px rgb(232, 212,  
212) }
```

Background

The CSS property to change the background color of an element to XYZ 68.7059, 68.9962, 71.9838 is called "background". The background property can be set on classes, ids or directly on the HTML element.

```
.background, #background, body{  
background: rgb(232, 212, 212) }
```

If only the background color should be changed can be used:

```
.background{ background-color: rgb(232,  
212, 212) }
```

This example shows the color as background, it is applied via the CSS property "background".

To optimize and compress your CSS code, you can use our [online CSS compressor and optimizer](#) based on csstidy. If you want to create a linear or radial gradient as background or border, check our [CSS Gradient Generator](#).

Hey! You found this booklet interesting? Support Converting Colors with the new Membership Option!

The pro membership hides all ads, plus gives you double the colors in the color bucket, and more awesome pro features!

[Learn more, Memberships starting at \\$2.50/m!](#)

**Follow me
on Twitter!**

@ConvertingColor