

Converting Colors

XYZ(68.7777, 67.9879, 69.1725)

Have a look what the booklet for
XYZ(68.7777, 67.9879, 69.1725)
contains.

XYZ(68.7777, 67.9879, 69.1725)	3
<i>Conversions</i>	4
<i>Details</i>	6
<i>Harmonies</i>	12
<i>Previews</i>	24
<i>Color Blindness Simulation</i>	28
<i>CSS Examples</i>	31

Color

**XYZ(68.7777, 67.9879,
69.1725)**

Conversions

Conversions Part 1

Format	Color
Hex	ECD1D0
RGB	236, 209, 208
RGB Percent	93%, 82%, 82%
CMY	0.0745, 0.1804, 0.1843
CMYK	0.00, 0.11, 0.12, 0.07
HSL	2°, 42%, 87%
HSV	2°, 12%, 93%
XYZ	68.7777, 67.9879, 69.1725
YIQ	216.9590, 16.4130, 5.4130

Conversions

Conversions Part 2

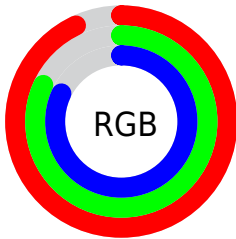
Format	Color
R _Y B	236, 209, 208
Decimal	15520208
CIE Lab	86.00, 9.23, 3.93
CIE LCh	86, 10.035, 23.066
Yxy	67.9879, 0.3340, 0.3301
Android (android.graphics.Color)	4293710288 (0xFFECD1D0)
YUV	216.9590, -4.4168, 16.6990
Hunter-Lab	82.4548, 4.5957, 7.9791

Details

The XYZ color **68.7777, 67.9879, 69.1725** is a light color, and the websafe version is hex **FFCCCC**. A complement of this color would be **70.8606, 78.8810, 90.8483**, and the grayscale version is **65.9483, 69.3827, 75.5578**.

A 20% lighter version of the original color is **95.0500, 100.0000, 108.9000**, and **36.3765, 35.4791, 35.5028** is the 20% darker color. If you saturate the color by 10%, you get **60.8983, 56.5347, 53.2709**, and if you desaturate by 10%, it is **77.8902, 81.2144, 87.6182**.

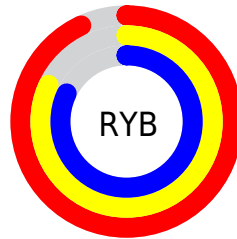
Distribution



Red (93%)

Green (82%)

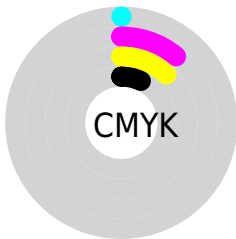
Blue (82%)



Red (93%)

Yellow (82%)

Blue (82%)

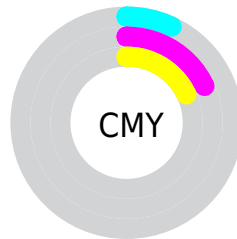


Cyan (0%)

Magenta (11%)

Yellow (12%)

Black (7%)



Cyan (7%)

Magenta (18%)

Yellow (18%)

Brightness & Saturation Gradients

These gradients show how the XYZ color 68.7777, 67.9879, 69.1725 changes by changing the brightness by 10 percent. The first figure shows a shift by +10% for each color and the second figure -10%.

Similar to the brightness gradients but the following saturation gradients show a change of the XYZ color 68.7777, 67.9879, 69.1725 by changing the saturation by 10% instead.

68.7777, 67.9879,
69.1725

68.7777, 67.9879,
69.1725

445.5802,
453.4531, 476.3495

50.8067, 49.8879,
50.3796

116.4998,
116.3348, 119.6979

36.2752, 35.3243,
35.3418

146.9816,
147.3505, 152.2675

24.8179, 23.9128,
23.6406

182.3644,
183.4403, 190.2665

16.0694, 15.2690,
14.8575

223.0135,
224.9884, 234.1132

9.6645, 9.0084,
8.5739

269.2942,
272.3794, 284.2264

5.2376, 4.7466,
4.3713

321.5721,

2.4235, 2.0994,

325.9976, 341.0244

1.8312

380.2122,
386.2274, 404.9260

■ 0.8569, 0.6643,
0.4484

■ 0.0000, 0.0000,
0.0000

■ 68.7777, 67.9879,
69.1725

■ 68.7777, 67.9879,
69.1725

■ 60.8983, 56.5347,
53.2709

■ 77.8902, 81.2144,
87.6182

■ 54.1938, 46.7710,
39.7978

■ 88.2472, 96.2627,
108.5372

■ 48.6095, 38.6196,
28.6350

■ 88.4024, 96.5730,
108.5889

■ 44.0844, 31.9937,
19.6527

■ 40.5515, 26.7986,
12.7084

■ 37.9364, 22.9287,
7.6427

■ 36.1539, 20.2642,
4.2723

■ 35.1030, 18.6635,
2.3774

■ 34.6842, 18.0168,
1.6495

Harmonies

Analogous

The Analogous color harmony consists of three colors that are next to each other on the color wheel.



69.1133, 67.9879, 75.5678



68.7777, 67.9879, 69.1725



67.3160, 67.9879, 64.3528

Triad

The Triadic color harmony groups three colors that are evenly spaced from another and form a triangle on the color wheel.



68.7777, 67.9879, 69.1725



61.1477, 67.9879, 66.6705



64.0877, 67.9879, 87.3332

Complementary

The Complementary color scheme is a pair of colors which are on the opposite of each other on the color wheel.



68.7777, 67.9879, 69.1725



70.8606, 78.8810, 90.8483

Split Complementary

Split-complementary colors differ from the complementary color scheme. The scheme consists of three colors, the original color and two neighbors of the complement color.



61.9979, 67.9879, 84.6258



68.7777, 67.9879, 69.1725



60.3267, 67.9879, 72.5078

Square

The Square scheme is like the rectangle color scheme, but the four colors are evenly spaced on the color wheel.



68.7777, 67.9879, 69.1725



62.9023, 67.9879, 62.9692



60.6342, 67.9879, 79.1040



66.3696, 67.9879, 86.3096

Rectangle

The Rectangle color scheme consists of four colors that form a rectangle on the color wheel.



68.7777, 67.9879, 69.1725



65.9179, 67.9879, 62.5539



60.6342, 67.9879, 79.1040



63.3402, 67.9879, 86.8241

Sweetspot

The Sweet Spot groups the original color and five complimentary colors.



68.7796, 67.9909, 69.1739



90.3935, 93.2456, 99.4602



72.1538, 68.9476, 88.1537



19.1664, 19.6949, 20.9207



0.0000, 0.0000, 0.0000



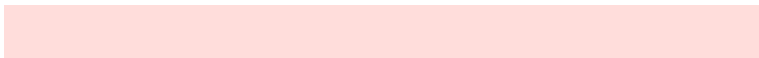
20.3446, 21.4041, 23.3091

Same Dimension

The Same Dimension uses a secret algorithm to generate beautiful new colors.



68.7796, 67.9909, 69.1739



79.8116, 77.8819, 78.0513



72.3479, 75.1275, 70.3634



15.1088, 15.1406, 15.6448



19.1383, 9.9708, 0.9159



1.5181, 0.8136, 0.0770

Inverse Universe

The Inverse Universe completely reimagines the original color for something new.



70.8606, 78.8810, 90.8483



82.7066, 93.0324, 108.2057



67.0277, 71.2150, 89.5707



15.4687, 17.0238, 19.3929



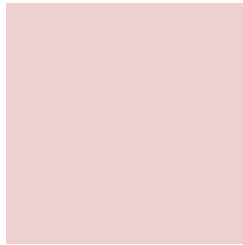
23.5893, 33.8256, 49.0287



1.8668, 2.6851, 3.8548

Previews

White Background



This preview shows how the XYZ color 68.7777, 67.9879, 69.1725 looks on a white background.

Color Contrast Check

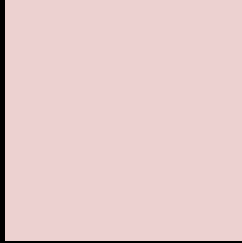
Large Text (above 18pt) WCAG AA × Fail

Any Text WCAG AA × Fail

Large Text (above 18pt) WCAG AAA × Fail

Any Text WCAG AAA × Fail

Black Background



This preview shows how the XYZ color 68.7777, 67.9879, 69.1725 looks on a black background.

Color Contrast Check

Large Text (above 18pt) WCAG AA ✓ Pass

Any Text WCAG AA ✓ Pass

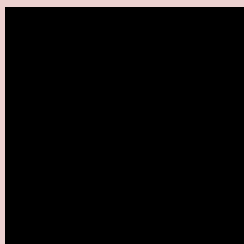
Large Text (above 18pt) WCAG AAA ✓ Pass

Any Text WCAG AAA ✓ Pass

If you want to check with other color combinations, try the [Color Contrast Checker](#).

XYZ 68.7777, 67.9879, 69.1725

Background



This preview shows how black text looks on a background with the XYZ color 68.7777, 67.9879, 69.1725.

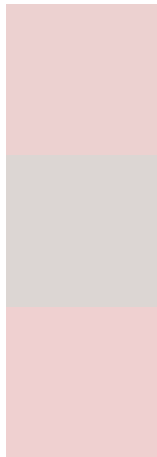


This preview shows how white text looks on a background with the XYZ color 68.7777, 67.9879,

Color Blindness Simulation

Color vision deficiency is a very complex topic, and I could not describe the different causes any better than Wikipedia does, so if you want to learn more, you should check out their [article about color blindness](#).

Dichromacy



Original Color

68.7777, 67.9879, 69.1725

Protanopia

65.3196, 68.0119, 71.3129

Deuteranopia

69.5376, 68.0165, 69.1380



Tritanopia

70.8920, 68.1305, 79.2261

Trichromacy



Original Color

68.7777, 67.9879, 69.1725

Protanomaly

66.5404, 67.9089, 70.5734

Deuteranomaly

69.2009, 67.8430, 69.1222

Tritanomaly

70.1358, 68.1782, 75.7928

Monochromacy



Original Color

68.7777, 67.9879, 69.1725

Achromatopsia

65.9525, 69.3872, 75.5626

Achromatomaly

66.9246, 68.7955, 73.3699

CSS Examples

Text

The CSS property to change the color of the text to XYZ 68.7777, 67.9879, 69.1725 is called "color". The color property can be set on classes, ids or directly on the HTML element.

This example shows how text in the color `rgb(236, 209, 208)` looks like.

```
.text, #text, p{  
    color:rgb(236, 209, 208)  
}
```

If you want to add a text shadow in that color use the text-shadow property, you can generate a text shadow directly with our [CSS Text Shadow Generator](#).

Here you see how black text with a 4 pixel rgb(236, 209, 208) colored shadow looks like.

```
.shadow{ text-shadow: 4px 4px 2px rgb(236, 209, 208) }
```

Border

The CSS property to change the border of an element to XYZ 68.7777, 67.9879, 69.1725 is called "border". The border property can be set on classes, ids or directly on the HTML element.

This example shows the color as border, it can be applied via the CSS property "border" or "border-color".

```
.border, #border, table{ border:4px solid rgb(236, 209, 208) }
```


If only the border color should be changed use the property `border-color`.

```
.border{ border-color:rgb(236, 209, 208) }
```

If you want to add a box shadow in that color use:

Here you see how a box with a 4 pixel `rgb(236, 209, 208)` colored shadow looks like.

```
.boxshadow{ -moz-box-shadow:4px 4px 4px  
4px rgb(236, 209, 208); -webkit-box-  
shadow:4px 4px 4px 4px rgb(236, 209, 208);  
box-shadow:4px 4px 4px 4px rgb(236, 209,  
208) }
```

Background

The CSS property to change the background color of an element to XYZ 68.7777, 67.9879, 69.1725 is called "background". The background property can be set on classes, ids or directly on the HTML element.

```
.background, #background, body{  
background: rgb(236, 209, 208) }
```

If only the background color should be changed can be used:

```
.background{ background-color: rgb(236,  
209, 208) }
```

This example shows the color as background, it is applied via the CSS property "background".

To optimize and compress your CSS code, you can use our [online CSS compressor and optimizer](#) based on csstidy. If you want to create a linear or radial gradient as background or border, check our [CSS Gradient Generator](#).

Hey! You found this booklet interesting? Support Converting Colors with the new Membership Option!

The pro membership hides all ads, plus gives you double the colors in the color bucket, and more awesome pro features!

[Learn more, Memberships starting at \\$2.50/m!](#)

**Follow me
on Twitter!**

@ConvertingColor