

Converting Colors

XYZ(68.9146, 68.7681, 69.2902)

Have a look what the booklet for
XYZ(68.9146, 68.7681, 69.2902)
contains.

XYZ(68.9404, 68.8048, 69.3216)	3
<i>Conversions</i>	4
<i>Details</i>	6
<i>Harmonies</i>	12
<i>Previews</i>	24
<i>Color Blindness Simulation</i>	28
<i>CSS Examples</i>	31

Color

**XYZ(68.9404, 68.8048,
69.3216)**

Conversions

Conversions Part 1

Format	Color
Hex	EBD3D0
RGB	235, 211, 208
RGB Percent	92%, 83%, 82%
CMY	0.0784, 0.1725, 0.1843
CMYK	0.00, 0.10, 0.11, 0.08
HSL	7°, 40%, 87%
HSV	7°, 11%, 92%
XYZ	68.9404, 68.8048, 69.3216
YIQ	217.8340, 15.2670, 4.1550

Conversions

Conversions Part 2

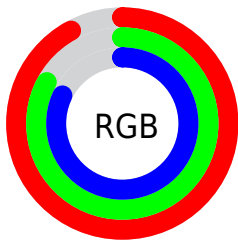
Format	Color
R _Y B	235, 211, 208
Decimal	15455184
CIE Lab	86.41, 7.83, 4.51
CIE LCh	86, 9.038, 29.931
Yxy	68.8048, 0.3329, 0.3323
Android (android.graphics.Color)	4293645264 (0xFFEBD3D0)
YUV	217.8340, -4.8482, 15.0546
Hunter-Lab	82.9487, 3.1950, 8.5144

Details

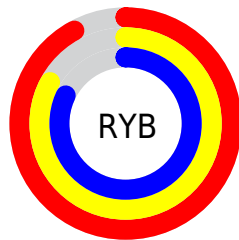
The XYZ color **68.9404, 68.8048, 69.3216** is a light color, and the websafe version is hex **CCCCCC**. A complement of this color would be **69.8641, 77.1197, 89.8014**, and the grayscale version is **66.5528, 70.0187, 76.2504**.

A 20% lighter version of the original color is **95.0500, 100.0000, 108.9000**, and **36.3116, 35.6937, 35.5476** is the 20% darker color. If you saturate the color by 10%, you get **61.4052, 58.0232, 53.5866**, and if you desaturate by 10%, it is **77.5820, 81.1121, 87.5405**.

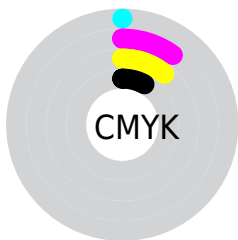
Distribution



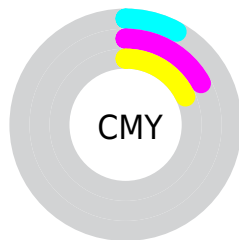
- Red (92%)
- Green (83%)
- Blue (82%)



- Red (92%)
- Yellow (83%)
- Blue (82%)



- Cyan (0%)
- Magenta (10%)
- Yellow (11%)
- Black (8%)



- Cyan (8%)
- Magenta (17%)
- Yellow (18%)

Brightness & Saturation Gradients

These gradients show how the XYZ color 68.9404, 68.8048, 69.3216 changes by changing the brightness by 10 percent. The first figure shows a shift by +10% for each color and the second figure -10%.

Similar to the brightness gradients but the following saturation gradients show a change of the XYZ color 68.9404, 68.8048, 69.3216 by changing the saturation by 10% instead.

68.9404, 68.8048,
69.3216

68.9404, 68.8048,
69.3216

446.1454,
456.3422, 476.8890

50.9396, 50.5528,
50.5003

116.7310,
117.5027, 119.9128

36.3814, 35.8528,
35.4371

147.2515,
148.7174, 152.5198

24.9004, 24.3205,
23.7135

182.6760,
185.0217, 190.5591

16.1312, 15.5716,
14.9110

223.3698,
226.8001, 234.4492

9.7085, 9.2215,
8.6110

269.6983,
274.4370, 284.6088

5.2669, 4.8859,
4.3950

322.0268,

2.4410, 2.1805,

328.3167, 341.4562

1.8445

380.7207,
388.8236, 405.4101

■ 0.8656, 0.7093,
0.4570

■ 0.0000, 0.0000,
0.0000

■ 68.9404, 68.8048,
69.3216

■ 68.9404, 68.8048,
69.3216

■ 61.4052, 58.0232,
53.5866

■ 77.5820, 81.1121,
87.5405

■ 54.9262, 48.6991,
40.2238

■ 87.3659, 94.9917,
108.3383

■ 49.4576, 40.7727,
29.1191

■ 88.0713, 96.4023,
108.5734

■ 44.9481, 34.1763,
20.1476

■ 41.3421, 28.8370,
13.1722

■ 38.5778, 24.6744,
8.0397

■ 36.5859, 21.5991,
4.5747

■ 35.2854, 19.5085,
2.5676

■ 34.6340, 18.4077,
1.7276

Harmonies

Analogous

The Analogous color harmony consists of three colors that are next to each other on the color wheel.



69.4969, 68.8048, 74.9305



68.9404, 68.8048, 69.3216



67.4304, 68.8048, 65.3947

Triad

The Triadic color harmony groups three colors that are evenly spaced from another and form a triangle on the color wheel.



68.9404, 68.8048, 69.3216



61.9816, 68.8048, 69.2990



65.3921, 68.8048, 87.0205

Complementary

The Complementary color scheme is a pair of colors which are on the opposite of each other on the color wheel.



68.9404, 68.8048, 69.3216



69.8641, 77.1197, 89.8014

Split Complementary

Split-complementary colors differ from the complementary color scheme. The scheme consists of three colors, the original color and two neighbors of the complement color.



63.4047, 68.8048, 85.3209



68.9404, 68.8048, 69.3216



61.4614, 68.8048, 74.9030

Square

The Square scheme is like the rectangle color scheme, but the four colors are evenly spaced on the color wheel.



68.9404, 68.8048, 69.3216



63.4129, 68.8048, 65.3821



61.9769, 68.8048, 80.8051



67.4219, 68.8048, 85.3359

Rectangle

The Rectangle color scheme consists of four colors that form a rectangle on the color wheel.



68.9404, 68.8048, 69.3216



66.1017, 68.8048, 64.1504



61.9769, 68.8048, 80.8051



64.6971, 68.8048, 86.8249

Sweetspot

The Sweet Spot groups the original color and five complimentary colors.



68.9423, 68.8078, 69.3231



91.7119, 95.2556, 101.8316



71.4258, 68.6181, 86.0484



19.4437, 20.1234, 21.4020



0.0000, 0.0000, 0.0000



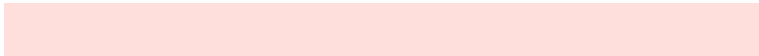
20.3446, 21.4041, 23.3091

Same Dimension

The Same Dimension uses a secret algorithm to generate beautiful new colors.



68.9423, 68.8078, 69.3231



80.5262, 79.3113, 78.2895



72.3564, 75.6360, 70.4611



15.2004, 15.3238, 15.6754



19.3205, 10.3353, 0.9766



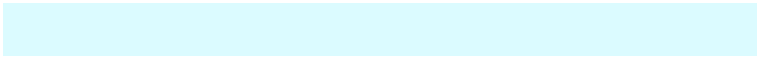
1.5620, 0.9012, 0.0916

Inverse Universe

The Inverse Universe completely reimagines the original color for something new.



69.8641, 77.1197, 89.8014



81.8596, 91.3383, 107.9233



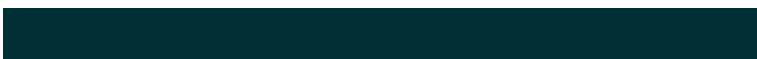
66.2881, 69.9677, 88.6094



15.3662, 16.8189, 19.3587



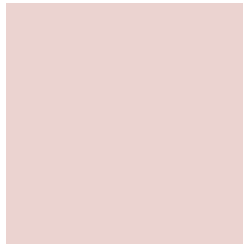
21.0738, 28.7947, 48.1902



1.6957, 2.3428, 3.7977

Previews

White Background



This preview shows how the XYZ color 68.9404, 68.8048, 69.3216 looks on a white background.

Color Contrast Check

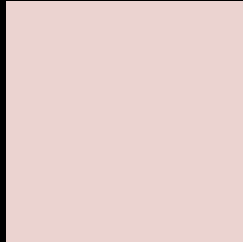
Large Text (above 18pt) WCAG AA × Fail

Any Text WCAG AA × Fail

Large Text (above 18pt) WCAG AAA × Fail

Any Text WCAG AAA × Fail

Black Background



This preview shows how the XYZ color 68.9404, 68.8048, 69.3216 looks on a black background.

Color Contrast Check

Large Text (above 18pt) WCAG AA ✓ Pass

Any Text WCAG AA ✓ Pass

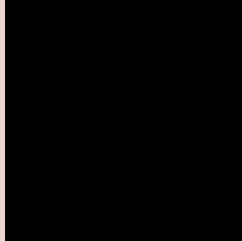
Large Text (above 18pt) WCAG AAA ✓ Pass

Any Text WCAG AAA ✓ Pass

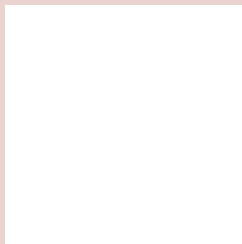
If you want to check with other color combinations, try the [Color Contrast Checker](#).

XYZ 68.9404, 68.8048, 69.3216

Background



This preview shows how black text looks on a background with the XYZ color 68.9404, 68.8048, 69.3216.

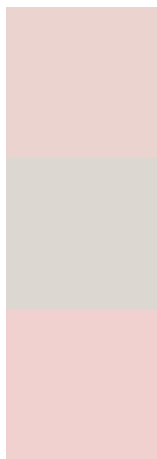


This preview shows how white text looks on a background with the XYZ color 68.9404, 68.8048,

Color Blindness Simulation

Color vision deficiency is a very complex topic, and I could not describe the different causes any better than Wikipedia does, so if you want to learn more, you should check out their [article about color blindness](#).

Dichromacy



Original Color

68.9404, 68.8048, 69.3216

Protanopia

65.7521, 68.6262, 70.7534

Deuteranopia

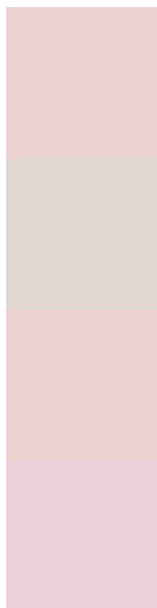
70.1208, 68.6803, 69.2354



Tritanopia

71.0715, 68.5525, 80.7202

Trichromacy



Original Color

68.9404, 68.8048, 69.3216

Protanomaly

66.9192, 68.8653, 70.0869

Deuteranomaly

69.6917, 68.8244, 69.2858

Tritanomaly

70.1787, 68.5483, 76.5502

Monochromacy



Original Color

68.9404, 68.8048, 69.3216

Achromatopsia

66.6397, 70.1102, 76.3500

Achromatomaly

67.1785, 69.3032, 73.4545

CSS Examples

Text

The CSS property to change the color of the text to XYZ 68.9404, 68.8048, 69.3216 is called "color". The color property can be set on classes, ids or directly on the HTML element.

This example shows how text in the color rgb(235, 211, 208) looks like.

```
.text, #text, p{  
    color:rgb(235, 211, 208)  
}
```

If you want to add a text shadow in that color use the text-shadow property, you can generate a text shadow directly with our [CSS Text Shadow Generator](#).

Here you see how black text with a 4 pixel rgb(235, 211, 208) colored shadow looks like.

```
.shadow{ text-shadow: 4px 4px 2px rgb(235, 211, 208) }
```

Border

The CSS property to change the border of an element to XYZ 68.9404, 68.8048, 69.3216 is called "border". The border property can be set on classes, ids or directly on the HTML element.

This example shows the color as border, it can be applied via the CSS property "border" or "border-color".

```
.border, #border, table{ border:4px solid rgb(235, 211, 208) }
```


If only the border color should be changed use the property `border-color`.

```
.border{ border-color:rgb(235, 211, 208) }
```

If you want to add a box shadow in that color use:

Here you see how a box with a 4 pixel `rgb(235, 211, 208)` colored shadow looks like.

```
.boxshadow{ -moz-box-shadow:4px 4px 4px  
4px rgb(235, 211, 208); -webkit-box-  
shadow:4px 4px 4px 4px rgb(235, 211, 208);  
box-shadow:4px 4px 4px 4px rgb(235, 211,  
208) }
```

Background

The CSS property to change the background color of an element to XYZ 68.9404, 68.8048, 69.3216 is called "background". The background property can be set on classes, ids or directly on the HTML element.

```
.background, #background, body{  
background: rgb(235, 211, 208) }
```

If only the background color should be changed can be used:

```
.background{ background-color: rgb(235,  
211, 208) }
```

This example shows the color as background, it is applied via the CSS property "background".

To optimize and compress your CSS code, you can use our [online CSS compressor and optimizer](#) based on csstidy. If you want to create a linear or radial gradient as background or border, check our [CSS Gradient Generator](#).

Hey! You found this booklet interesting? Support Converting Colors with the new Membership Option!

The pro membership hides all ads, plus gives you double the colors in the color bucket, and more awesome pro features!

[Learn more, Memberships starting at \\$2.50/m!](#)

**Follow me
on Twitter!**

@ConvertingColor