

Converting Colors

XYZ(68.9437, 69.4506, 73.2081)

Have a look what the booklet for
XYZ(68.9437, 69.4506, 73.2081)
contains.

XYZ(68.8868, 69.4325, 73.3894)	3
<i>Conversions</i>	4
<i>Details</i>	6
<i>Harmonies</i>	12
<i>Previews</i>	24
<i>Color Blindness Simulation</i>	28
<i>CSS Examples</i>	31

Color

**XYZ(68.8868, 69.4325,
73.3894)**

Conversions

Conversions Part 1

Format	Color
Hex	E7D5D6
RGB	231, 213, 214
RGB Percent	91%, 84%, 84%
CMY	0.0941, 0.1647, 0.1608
CMYK	0.00, 0.08, 0.07, 0.09
HSL	357°, 27%, 87%
HSV	357°, 8%, 91%
XYZ	68.8868, 69.4325, 73.3894
YIQ	218.4960, 10.4070, 4.1270

Conversions

Conversions Part 2

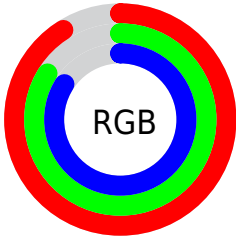
Format	Color
R _{YB}	231, 213, 214
Decimal	15193558
CIE Lab	86.72, 6.38, 1.74
CIE LCh	87, 6.612, 15.288
Yxy	69.4325, 0.3254, 0.3280
Android (android.graphics.Color)	4293383638 (0xFFE7D5D6)
YUV	218.4960, -2.2165, 10.9660
Hunter-Lab	83.3262, 1.7474, 6.1087

Details

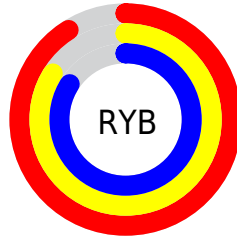
The XYZ color **68.8868, 69.4325, 73.3894** is a light color, and the websafe version is hex **CCCCCC**. A complement of this color would be **70.3020, 77.0128, 86.0263**, and the grayscale version is **66.9944, 70.4834, 76.7564**.

A 20% lighter version of the original color is **95.0500, 100.0000, 108.9000**, and **36.1641, 36.0709, 37.8572** is the 20% darker color. If you saturate the color by 10%, you get **60.8827, 57.5888, 57.8805**, and if you desaturate by 10%, it is **78.0959, 83.0868, 91.1436**.

Distribution



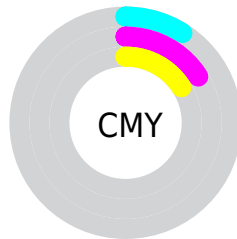
- Red (91%)
- Green (84%)
- Blue (84%)



- Red (91%)
- Yellow (84%)
- Blue (84%)



- Cyan (0%)
- Magenta (8%)
- Yellow (7%)
- Black (9%)



- Cyan (9%)
- Magenta (16%)
- Yellow (16%)

Brightness & Saturation Gradients

These gradients show how the XYZ color 68.8868, 69.4325, 73.3894 changes by changing the brightness by 10 percent. The first figure shows a shift by +10% for each color and the second figure -10%.

Similar to the brightness gradients but the following saturation gradients show a change of the XYZ color 68.8868, 69.4325, 73.3894 by changing the saturation by 10% instead.

68.8868, 69.4325,
73.3894

68.8868, 69.4325,
73.3894

445.9592,
458.5549, 491.4702

50.8958, 51.0640,
53.8007

116.6548,
118.3991, 125.7559

36.3464, 36.2596,
38.0502

147.1626,
149.7660, 159.3707

24.8732, 24.6347,
25.7195

182.5734,
186.2345, 198.4980

16.1108, 15.8051,
16.3901

223.2524,
228.1890, 243.5563

9.6940, 9.3864,
9.6433

269.5652,
276.0139, 294.9641

5.2572, 4.9940,
5.0606

321.8770,

2.4353, 2.2438,

330.0936, 353.1400

2.2235

380.5533,
390.8125, 418.5026

■ 0.8627, 0.7437,
0.6879

■ 0.0000, 0.0000,
0.0000

■ 68.8868, 69.4325,
73.3894

■ 68.8868, 69.4325,
73.3894

■ 60.8827, 57.5888,
57.8805

■ 78.0959, 83.0868,
91.1436

■ 54.0280, 47.4711,
44.5232

■ 86.7653, 95.7291,
108.5123

■ 48.2718, 39.0016,
33.2238

■ 43.5570, 32.0929,
23.8800

■ 39.8211, 26.6498,
16.3808

■ 36.9953, 22.5665,
10.6038

■ 35.0015, 19.7231,
6.4123

■ 33.7487, 17.9787,
3.6482

■ 33.1167, 17.1423,
2.1188

Harmonies

Analogous

The Analogous color harmony consists of three colors that are next to each other on the color wheel.



68.8947, 69.4325, 77.7710



68.8868, 69.4325, 73.3894



68.0956, 69.4325, 69.7409

Triad

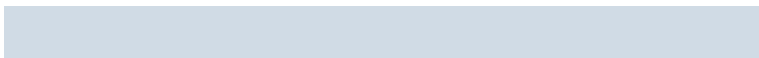
The Triadic color harmony groups three colors that are evenly spaced from another and form a triangle on the color wheel.



68.8868, 69.4325, 73.3894



63.9146, 69.4325, 69.7980



65.2455, 69.4325, 84.0895

Complementary

The Complementary color scheme is a pair of colors which are on the opposite of each other on the color wheel.



68.8868, 69.4325, 73.3894



70.3020, 77.0128, 86.0263

Split Complementary

Split-complementary colors differ from the complementary color scheme. The scheme consists of three colors, the original color and two neighbors of the complement color.



63.9352, 69.4325, 81.7788



68.8868, 69.4325, 73.3894



63.1749, 69.4325, 73.4701

Square

The Square scheme is like the rectangle color scheme, but the four colors are evenly spaced on the color wheel.



68.8868, 69.4325, 73.3894



65.2170, 69.4325, 67.7229



63.1824, 69.4325, 77.8549



66.7762, 69.4325, 84.0658

Rectangle

The Rectangle color scheme consists of four colors that form a rectangle on the color wheel.



68.8868, 69.4325, 73.3894



67.2373, 69.4325, 68.1660



63.1824, 69.4325, 77.8549



64.7652, 69.4325, 83.5562

Sweetspot

The Sweet Spot groups the original color and five complimentary colors.



68.8887, 69.4355, 73.3909



92.6785, 96.4826, 104.3307



70.7890, 70.1510, 85.4115



19.8618, 20.6881, 22.3789



0.0000, 0.0000, 0.0000



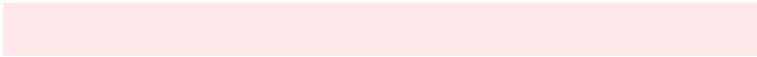
20.3446, 21.4041, 23.3091

Same Dimension

The Same Dimension uses a secret algorithm to generate beautiful new colors.



68.8887, 69.4355, 73.3909



84.8644, 84.9029, 89.2457



70.7709, 73.4027, 73.3927



14.4092, 14.3809, 15.0891



18.5292, 9.5459, 1.1496



1.3807, 0.7100, 0.1453

Inverse Universe

The Inverse Universe completely reimagines the original color for something new.



68.8887, 69.4355, 73.3909



84.8644, 84.9029, 89.2457



68.3081, 72.8004, 86.0536



14.4092, 14.3809, 15.0891



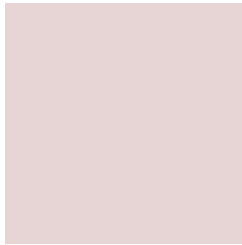
18.5292, 9.5459, 1.1496



1.3807, 0.7100, 0.1453

Previews

White Background



This preview shows how the XYZ color 68.8868, 69.4325, 73.3894 looks on a white background.

Color Contrast Check

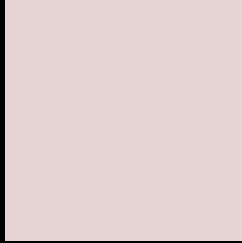
Large Text (above 18pt) WCAG AA × Fail

Any Text WCAG AA × Fail

Large Text (above 18pt) WCAG AAA × Fail

Any Text WCAG AAA × Fail

Black Background



This preview shows how the XYZ color 68.8868, 69.4325, 73.3894 looks on a black background.

Color Contrast Check

Large Text (above 18pt) WCAG AA ✓ Pass

Any Text WCAG AA ✓ Pass

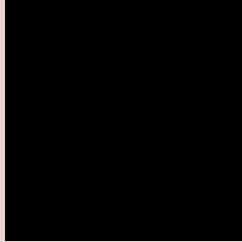
Large Text (above 18pt) WCAG AAA ✓ Pass

Any Text WCAG AAA ✓ Pass

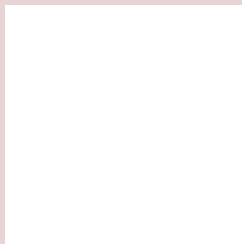
If you want to check with other color combinations, try the [Color Contrast Checker](#).

XYZ 68.8868, 69.4325, 73.3894

Background



This preview shows how black text looks on a background with the XYZ color 68.8868, 69.4325, 73.3894.



This preview shows how white text looks on a background with the XYZ color 68.8868, 69.4325,

73.3894.

Color Blindness Simulation

Color vision deficiency is a very complex topic, and I could not describe the different causes any better than Wikipedia does, so if you want to learn more, you should check out their [article about color blindness](#).

Dichromacy



Original Color

68.8868, 69.4325, 73.3894

Protanopia

66.7693, 69.4418, 74.8502

Deuteranopia

70.9089, 69.3502, 73.9386



Tritanopia

70.7637, 69.4582, 82.3502

Trichromacy



Original Color

68.8868, 69.4325, 73.3894

Protanomaly

67.6175, 69.5147, 74.1438

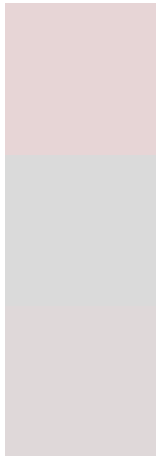
Deuteranomaly

70.1521, 69.3277, 73.9741

Tritanomaly

70.0070, 69.5167, 78.8355

Monochromacy



Original Color

68.8868, 69.4325, 73.3894

Achromatopsia

66.6397, 70.1102, 76.3500

Achromatomaly

67.5117, 69.8095, 75.5620

CSS Examples

Text

The CSS property to change the color of the text to XYZ 68.8868, 69.4325, 73.3894 is called "color". The color property can be set on classes, ids or directly on the HTML element.

This example shows how text in the color rgb(231, 213, 214) looks like.

```
.text, #text, p{  
    color:rgb(231, 213, 214)  
}
```

If you want to add a text shadow in that color use the text-shadow property, you can generate a text shadow directly with our [CSS Text Shadow Generator](#).

Here you see how black text with a 4 pixel rgb(231, 213, 214) colored shadow looks like.

```
.shadow{ text-shadow: 4px 4px 2px rgb(231, 213, 214) }
```

Border

The CSS property to change the border of an element to XYZ 68.8868, 69.4325, 73.3894 is called "border". The border property can be set on classes, ids or directly on the HTML element.

This example shows the color as border, it can be applied via the CSS property "border" or "border-color".

```
.border, #border, table{ border:4px solid rgb(231, 213, 214) }
```


If only the border color should be changed use the property `border-color`.

```
.border{ border-color:rgb(231, 213, 214) }
```

If you want to add a box shadow in that color use:

Here you see how a box with a 4 pixel `rgb(231, 213, 214)` colored shadow looks like.

```
.boxshadow{ -moz-box-shadow:4px 4px 4px  
4px rgb(231, 213, 214); -webkit-box-  
shadow:4px 4px 4px 4px rgb(231, 213, 214);  
box-shadow:4px 4px 4px 4px rgb(231, 213,  
214) }
```

Background

The CSS property to change the background color of an element to XYZ 68.8868, 69.4325, 73.3894 is called "background". The background property can be set on classes, ids or directly on the HTML element.

```
.background, #background, body{  
background: rgb(231, 213, 214) }
```

If only the background color should be changed can be used:

```
.background{ background-color: rgb(231,  
213, 214) }
```

This example shows the color as background, it is applied via the CSS property "background".

To optimize and compress your CSS code, you can use our [online CSS compressor and optimizer](#) based on csstidy. If you want to create a linear or radial gradient as background or border, check our [CSS Gradient Generator](#).

Hey! You found this booklet interesting? Support Converting Colors with the new Membership Option!

The pro membership hides all ads, plus gives you double the colors in the color bucket, and more awesome pro features!

[Learn more, Memberships starting at \\$2.50/m!](#)

**Follow me
on Twitter!**

@ConvertingColor