

Converting Colors

XYZ(68.9450, 69.2054, 68.1167)

Have a look what the booklet for
XYZ(68.9450, 69.2054, 68.1167)
contains.

XYZ(68.9450, 69.2054, 68.1167)	3
<i>Conversions</i>	4
<i>Details</i>	6
<i>Harmonies</i>	12
<i>Previews</i>	24
<i>Color Blindness Simulation</i>	28
<i>CSS Examples</i>	31

Color

**XYZ(68.9450, 69.2054,
68.1167)**

Conversions

Conversions Part 1

Format	Color
Hex	EBD4CE
RGB	235, 212, 206
RGB Percent	92%, 83%, 81%
CMY	0.0784, 0.1686, 0.1922
CMYK	0.00, 0.10, 0.12, 0.08
HSL	12°, 42%, 86%
HSV	12°, 12%, 92%
XYZ	68.9450, 69.2054, 68.1167
YIQ	218.1930, 15.6340, 3.0100

Conversions

Conversions Part 2

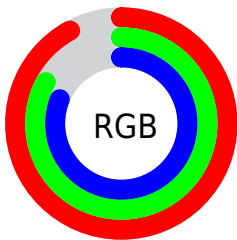
Format	Color
R _Y B	235, 214, 206
Decimal	15455438
CIE Lab	86.61, 6.99, 5.85
CIE LCh	87, 9.116, 39.957
Yxy	69.2054, 0.3343, 0.3355
Android (android.graphics.Color)	4293645518 (0xFFEBD4CE)
YUV	218.1930, -6.0111, 14.7397
Hunter-Lab	83.1898, 2.3529, 9.6856

Details

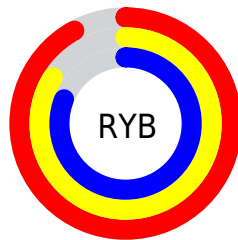
The XYZ color **68.9450, 69.2054, 68.1167** is a light color, and the websafe version is hex **CCCCCC**. A complement of this color would be **68.4679, 75.1570, 89.4960**, and the grayscale version is **66.8079, 70.2871, 76.5427**.

A 20% lighter version of the original color is **95.0500, 100.0000, 108.9000**, and **36.3149, 35.9646, 34.7336** is the 20% darker color. If you saturate the color by 10%, you get **61.9088, 59.3648, 52.7238**, and if you desaturate by 10%, it is **76.9495, 80.2981, 85.9399**.

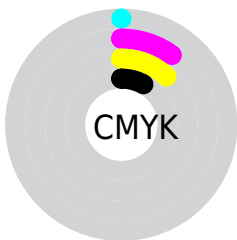
Distribution



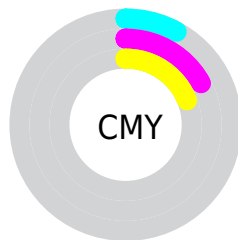
- Red (92%)
- Green (83%)
- Blue (81%)



- Red (92%)
- Yellow (84%)
- Blue (81%)



- Cyan (0%)
- Magenta (10%)
- Yellow (12%)
- Black (8%)



- Cyan (8%)
- Magenta (17%)
- Yellow (19%)

Brightness & Saturation Gradients

These gradients show how the XYZ color 68.9450, 69.2054, 68.1167 changes by changing the brightness by 10 percent. The first figure shows a shift by +10% for each color and the second figure -10%.

Similar to the brightness gradients but the following saturation gradients show a change of the XYZ color 68.9450, 69.2054, 68.1167 by changing the saturation by 10% instead.

68.9450, 69.2054,
68.1167

68.9450, 69.2054,
68.1167

446.1614,
457.7551, 472.5187

50.9434, 50.8790,
49.5254

116.7375,
118.0749, 118.1749

36.3844, 36.1123,
34.6679

147.2591,
149.3868, 150.4788

24.9027, 24.5210,
23.1257

182.6848,
185.7960, 188.1907

16.1329, 15.7205,
14.4802

223.3799,
227.6869, 231.7291

9.7097, 9.3266,
8.3128

269.7097,
275.4438, 281.5126

5.2677, 4.9548,
4.2051

322.0397,

2.4415, 2.2208,

329.4512, 337.9597

1.7385

380.7351,
390.0935, 401.4888

■ 0.8659, 0.7313,
0.3869

■ 0.0000, 0.0000,
0.0000

■ 68.9450, 69.2054,
68.1167

■ 68.9450, 69.2054,
68.1167

■ 61.9088, 59.3648,
52.7238

■ 76.9495, 80.2981,
85.9399

■ 55.7982, 50.7232,
39.6512

■ 85.9517, 92.6755,
106.2879

■ 50.5755, 43.2371,
28.7871

■ 88.0712, 96.4023,
108.5734

■ 46.1983, 36.8569,
20.0088

■ 42.6205, 31.5293,
13.1811

■ 39.7917, 27.1966,
8.1534

■ 37.6548, 23.7951,
4.7522

■ 36.1441, 21.2533,
2.7696

■ 35.3452, 19.8303,
1.9647

Harmonies

Analogous

The Analogous color harmony consists of three colors that are next to each other on the color wheel.



69.8657, 69.2054, 73.3566



68.9450, 69.2054, 68.1167



67.1816, 69.2054, 64.9307

Triad

The Triadic color harmony groups three colors that are evenly spaced from another and form a triangle on the color wheel.



68.9450, 69.2054, 68.1167



62.0301, 69.2054, 71.4306



66.4835, 69.2054, 87.4185

Complementary

The Complementary color scheme is a pair of colors which are on the opposite of each other on the color wheel.



68.9450, 69.2054, 68.1167



68.4679, 75.1570, 89.4960

Split Complementary

Split-complementary colors differ from the complementary color scheme. The scheme consists of three colors, the original color and two neighbors of the complement color.



64.3935, 69.2054, 86.8346



68.9450, 69.2054, 68.1167



61.8522, 69.2054, 77.3851

Square

The Square scheme is like the rectangle color scheme, but the four colors are evenly spaced on the color wheel.



68.9450, 69.2054, 68.1167



63.1999, 69.2054, 66.7718



62.7088, 69.2054, 83.0843



68.4246, 69.2054, 84.6395

Rectangle

The Rectangle color scheme consists of four colors that form a rectangle on the color wheel.



68.9450, 69.2054, 68.1167



65.7807, 69.2054, 64.2940



62.7088, 69.2054, 83.0843



65.7746, 69.2054, 87.6124

Sweetspot

The Sweet Spot groups the original color and five complimentary colors.



68.9469, 69.2085, 68.1182



90.9247, 94.3080, 99.6372



70.5038, 67.4740, 83.5838



19.3002, 19.9626, 20.9653



0.0000, 0.0000, 0.0000



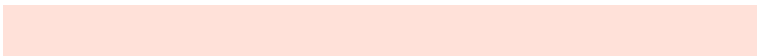
20.3446, 21.4041, 23.3091

Same Dimension

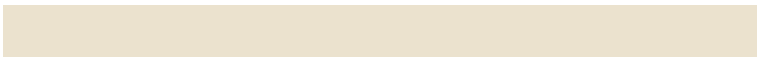
The Same Dimension uses a secret algorithm to generate beautiful new colors.



68.9469, 69.2085, 68.1182



80.5679, 79.9287, 76.6567



72.6803, 76.6752, 69.3626



15.3181, 15.5593, 15.7146



19.7446, 11.1834, 1.1180



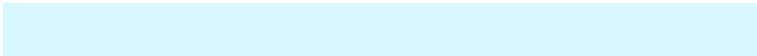
1.6180, 1.0132, 0.1103

Inverse Universe

The Inverse Universe completely reimagines the original color for something new.



68.4679, 75.1570, 89.4960



79.8764, 88.5041, 107.4808



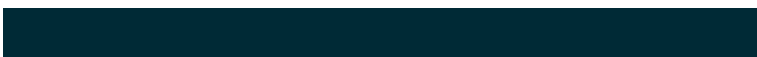
64.6740, 67.5691, 88.2313



15.2375, 16.5615, 19.3158



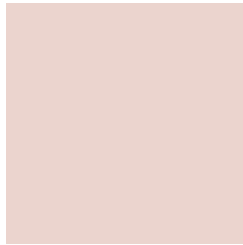
18.2530, 23.1529, 47.2499



1.4998, 1.9511, 3.7324

Previews

White Background



This preview shows how the XYZ color 68.9450, 69.2054, 68.1167 looks on a white background.

Color Contrast Check

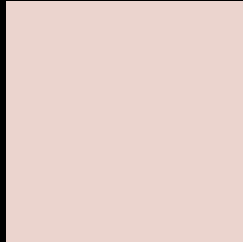
Large Text (above 18pt) WCAG AA × Fail

Any Text WCAG AA × Fail

Large Text (above 18pt) WCAG AAA × Fail

Any Text WCAG AAA × Fail

Black Background



This preview shows how the XYZ color 68.9450, 69.2054, 68.1167 looks on a black background.

Color Contrast Check

Large Text (above 18pt) WCAG AA ✓ Pass

Any Text WCAG AA ✓ Pass

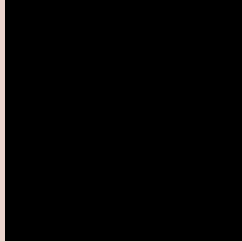
Large Text (above 18pt) WCAG AAA ✓ Pass

Any Text WCAG AAA ✓ Pass

If you want to check with other color combinations, try the [Color Contrast Checker](#).

XYZ 68.9450, 69.2054, 68.1167

Background



This preview shows how black text looks on a background with the XYZ color 68.9450, 69.2054, 68.1167.

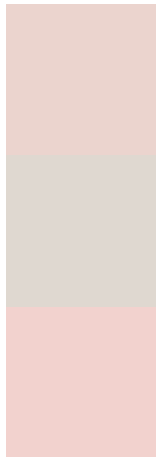


This preview shows how white text looks on a background with the XYZ color 68.9450, 69.2054,

Color Blindness Simulation

Color vision deficiency is a very complex topic, and I could not describe the different causes any better than Wikipedia does, so if you want to learn more, you should check out their [article about color blindness](#).

Dichromacy



Original Color

68.9450, 69.2054, 68.1167

Protanopia

66.3725, 69.3538, 69.5629

Deuteranopia

70.8051, 69.4267, 68.0614



Tritanopia

71.6510, 69.2143, 80.8174

Trichromacy



Original Color

68.9450, 69.2054, 68.1167

Protanomaly

67.2415, 69.4368, 68.8901

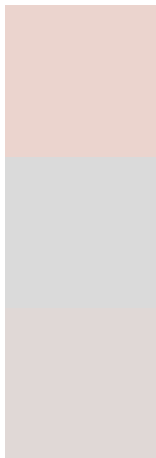
Deuteranomaly

70.0314, 69.3955, 68.0961

Tritanomaly

70.6265, 69.1597, 75.9564

Monochromacy



Original Color

68.9450, 69.2054, 68.1167

Achromatopsia

66.6397, 70.1102, 76.3500

Achromatomaly

67.4339, 69.8141, 73.5396

CSS Examples

Text

The CSS property to change the color of the text to XYZ 68.9450, 69.2054, 68.1167 is called "color". The color property can be set on classes, ids or directly on the HTML element.

This example shows how text in the color rgb(235, 212, 206) looks like.

```
.text, #text, p{  
    color:rgb(235, 212, 206)  
}
```

If you want to add a text shadow in that color use the text-shadow property, you can generate a text shadow directly with our [CSS Text Shadow Generator](#).

Here you see how black text with a 4 pixel rgb(235, 212, 206) colored shadow looks like.

```
.shadow{ text-shadow: 4px 4px 2px rgb(235, 212, 206) }
```

Border

The CSS property to change the border of an element to XYZ 68.9450, 69.2054, 68.1167 is called "border". The border property can be set on classes, ids or directly on the HTML element.

This example shows the color as border, it can be applied via the CSS property "border" or "border-color".

```
.border, #border, table{ border:4px solid rgb(235, 212, 206) }
```


If only the border color should be changed use the property `border-color`.

```
.border{ border-color:rgb(235, 212, 206) }
```

If you want to add a box shadow in that color use:

Here you see how a box with a 4 pixel `rgb(235, 212, 206)` colored shadow looks like.

```
.boxshadow{ -moz-box-shadow:4px 4px 4px  
4px rgb(235, 212, 206); -webkit-box-  
shadow:4px 4px 4px 4px rgb(235, 212, 206);  
box-shadow:4px 4px 4px 4px rgb(235, 212,  
206) }
```

Background

The CSS property to change the background color of an element to XYZ 68.9450, 69.2054, 68.1167 is called "background". The background property can be set on classes, ids or directly on the HTML element.

```
.background, #background, body{  
background: rgb(235, 212, 206) }
```

If only the background color should be changed can be used:

```
.background{ background-color: rgb(235,  
212, 206) }
```

This example shows the color as background, it is applied via the CSS property "background".

To optimize and compress your CSS code, you can use our [online CSS compressor and optimizer](#) based on csstidy. If you want to create a linear or radial gradient as background or border, check our [CSS Gradient Generator](#).

Hey! You found this booklet interesting? Support Converting Colors with the new Membership Option!

The pro membership hides all ads, plus gives you double the colors in the color bucket, and more awesome pro features!

[Learn more, Memberships starting at \\$2.50/m!](#)

**Follow me
on Twitter!**

@ConvertingColor