

Converting Colors

XYZ(68.9891, 68.0628, 70.7946)

Have a look what the booklet for
XYZ(68.9891, 68.0628, 70.7946)
contains.

XYZ(69.0254, 68.0869, 70.4768)	3
<i>Conversions</i>	4
<i>Details</i>	6
<i>Harmonies</i>	12
<i>Previews</i>	24
<i>Color Blindness Simulation</i>	28
<i>CSS Examples</i>	31

Color

**XYZ(69.0254, 68.0869,
70.4768)**

Conversions

Conversions Part 1

Format	Color
Hex	ECD1D2
RGB	236, 209, 210
RGB Percent	93%, 82%, 82%
CMY	0.0745, 0.1804, 0.1765
CMYK	0.00, 0.11, 0.11, 0.07
HSL	358°, 42%, 87%
HSV	358°, 11%, 93%
XYZ	69.0254, 68.0869, 70.4768
YIQ	217.1870, 15.7710, 6.0350

Conversions

Conversions Part 2

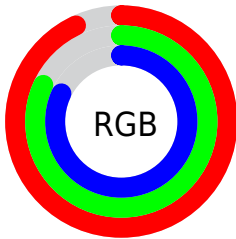
Format	Color
R _Y B	236, 209, 210
Decimal	15520210
CIE Lab	86.05, 9.56, 2.94
CIE LCh	86, 10.001, 17.115
Yxy	68.0869, 0.3325, 0.3280
Android (android.graphics.Color)	4293710290 (0xFFECD1D2)
YUV	217.1870, -3.5432, 16.4990
Hunter-Lab	82.5148, 4.9182, 7.1201

Details

The XYZ color **69.0254, 68.0869, 70.4768** is a light color, and the websafe version is hex **FFCCCC**. A complement of this color would be **71.2880, 79.5461, 90.1979**, and the grayscale version is **66.0991, 69.5414, 75.7305**.

A 20% lighter version of the original color is **95.0500, 100.0000, 108.9000**, and **36.5445, 35.5463, 36.3875** is the 20% darker color. If you saturate the color by 10%, you get **61.0251, 56.3004, 54.8172**, and if you desaturate by 10%, it is **78.2894, 81.7557, 88.5435**.

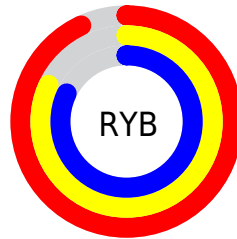
Distribution



Red (93%)

Green (82%)

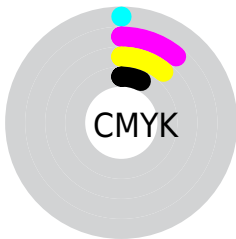
Blue (82%)



Red (93%)

Yellow (82%)

Blue (82%)

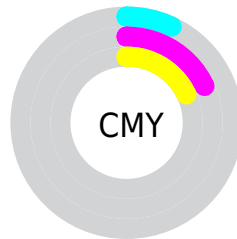


Cyan (0%)

Magenta (11%)

Yellow (11%)

Black (7%)



Cyan (7%)

Magenta (18%)

Yellow (18%)

Brightness & Saturation Gradients

These gradients show how the XYZ color 69.0254, 68.0869, 70.4768 changes by changing the brightness by 10 percent. The first figure shows a shift by +10% for each color and the second figure -10%.

Similar to the brightness gradients but the following saturation gradients show a change of the XYZ color 69.0254, 68.0869, 70.4768 by changing the saturation by 10% instead.

69.0254, 68.0869,
70.4768

69.0254, 68.0869,
70.4768

446.4405,
453.8038, 481.0566

51.0091, 49.9684,
51.4361

116.8517,
116.4765, 121.5759

36.4369, 35.3883,
36.1767

147.3925,
147.5163, 154.4715

24.9435, 23.9622,
24.2799

182.8387,
183.6321, 192.8224

16.1635, 15.3055,
15.3273

223.5559,
225.2083, 237.0473

9.7315, 9.0341,
8.9002

269.9093,
272.6291, 287.5646

5.2822, 4.7634,
4.5802

322.2643,

2.4502, 2.1091,

326.2790, 344.7929

1.9488

380.9863,
386.5425, 409.1507

■ 0.8702, 0.6698,
0.5235

■ 0.0000, 0.0000,
0.0000

■ 69.0254, 68.0869,
70.4768

■ 69.0254, 68.0869,
70.4768

■ 61.0251, 56.3004,
54.8172

■ 78.2894, 81.7557,
88.5435

■ 54.2285, 46.3052,
41.4590

■ 88.4024, 96.5731,
108.5889

■ 48.5788, 38.0163,
30.2952

■ 44.0130, 31.3386,
21.2083

■ 40.4616, 26.1671,
14.0702

■ 37.8472, 22.3850,
8.7384

■ 36.0811, 19.8580,
5.0512

■ 35.0578, 18.4253,
2.8177

■ 34.6401, 17.8521,
1.8701

Harmonies

Analogous

The Analogous color harmony consists of three colors that are next to each other on the color wheel.



69.1134, 68.0869, 76.9900



69.0254, 68.0869, 70.4768



67.7651, 68.0869, 65.2530

Triad

The Triadic color harmony groups three colors that are evenly spaced from another and form a triangle on the color wheel.



69.0254, 68.0869, 70.4768



61.5339, 68.0869, 65.8607



63.7352, 68.0869, 87.1534

Complementary

The Complementary color scheme is a pair of colors which are on the opposite of each other on the color wheel.



69.0254, 68.0869, 70.4768



71.2880, 79.5461, 90.1979

Split Complementary

Split-complementary colors differ from the complementary color scheme. The scheme consists of three colors, the original color and two neighbors of the complement color.



61.7569, 68.0869, 83.7887



69.0254, 68.0869, 70.4768



60.5064, 68.0869, 71.3516

Square

The Square scheme is like the rectangle color scheme, but the four colors are evenly spaced on the color wheel.



69.0254, 68.0869, 70.4768



63.4243, 68.0869, 62.6980



60.5870, 68.0869, 77.9178



66.0222, 68.0869, 86.8848

Rectangle

The Rectangle color scheme consists of four colors that form a rectangle on the color wheel.



69.0254, 68.0869, 70.4768



66.4463, 68.0869, 63.0880



60.5870, 68.0869, 77.9178



63.0131, 68.0869, 86.4018

Sweetspot

The Sweet Spot groups the original color and five complimentary colors.



69.0273, 68.0899, 70.4782



91.4942, 94.7503, 101.9744



72.0882, 69.2627, 88.9273



19.3852, 19.9878, 21.4403



0.0000, 0.0000, 0.0000



20.3446, 21.4041, 23.3091

Same Dimension

The Same Dimension uses a secret algorithm to generate beautiful new colors.



69.0273, 68.0899, 70.4782



79.6500, 77.2798, 78.8579



71.9988, 74.2308, 70.8584



15.0880, 15.0630, 15.7487



19.1044, 9.8444, 1.0851



1.5081, 0.7762, 0.1271

Inverse Universe

The Inverse Universe completely reimagines the original color for something new.



69.0273, 68.0899, 70.4782



79.6500, 77.2798, 78.8579



68.0527, 72.8447, 89.8314



15.0880, 15.0630, 15.7487



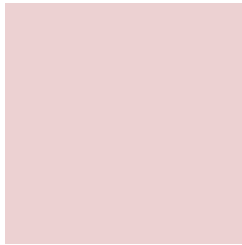
19.1044, 9.8444, 1.0851



1.5081, 0.7762, 0.1271

Previews

White Background



This preview shows how the XYZ color 69.0254, 68.0869, 70.4768 looks on a white background.

Color Contrast Check

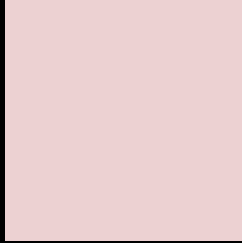
Large Text (above 18pt) WCAG AA × Fail

Any Text WCAG AA × Fail

Large Text (above 18pt) WCAG AAA × Fail

Any Text WCAG AAA × Fail

Black Background



This preview shows how the XYZ color 69.0254, 68.0869, 70.4768 looks on a black background.

Color Contrast Check

Large Text (above 18pt) WCAG AA ✓ Pass

Any Text WCAG AA ✓ Pass

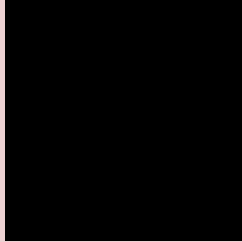
Large Text (above 18pt) WCAG AAA ✓ Pass

Any Text WCAG AAA ✓ Pass

If you want to check with other color combinations, try the [Color Contrast Checker](#).

XYZ 69.0254, 68.0869, 70.4768

Background



This preview shows how black text looks on a background with the XYZ color 69.0254, 68.0869, 70.4768.



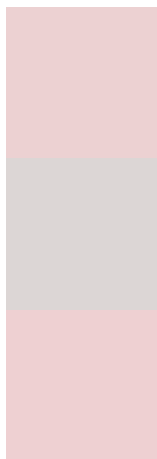
This preview shows how white text looks on a background with the XYZ color 69.0254, 68.0869,

70.4768.

Color Blindness Simulation

Color vision deficiency is a very complex topic, and I could not describe the different causes any better than Wikipedia does, so if you want to learn more, you should check out their [article about color blindness](#).

Dichromacy



Original Color

69.0254, 68.0869, 70.4768

Protanopia

65.5720, 68.1129, 72.6419

Deuteranopia

69.4486, 67.9420, 70.4266



Tritanopia

70.8920, 68.1305, 79.2261

Trichromacy



Original Color

69.0254, 68.0869, 70.4768

Protanomaly

66.7912, 68.0092, 71.8942

Deuteranomaly

69.1138, 67.7694, 70.4109

Tritanomaly

70.1358, 68.1782, 75.7928

Monochromacy



Original Color

69.0254, 68.0869, 70.4768

Achromatopsia

65.9525, 69.3872, 75.5626

Achromatomaly

66.9246, 68.7955, 73.3699

CSS Examples

Text

The CSS property to change the color of the text to XYZ 69.0254, 68.0869, 70.4768 is called "color". The color property can be set on classes, ids or directly on the HTML element.

This example shows how text in the color `rgb(236, 209, 210)` looks like.

```
.text, #text, p{  
    color:rgb(236, 209, 210)  
}
```

If you want to add a text shadow in that color use the text-shadow property, you can generate a text shadow directly with our [CSS Text Shadow Generator](#).

Here you see how black text with a 4 pixel rgb(236, 209, 210) colored shadow looks like.

```
.shadow{ text-shadow: 4px 4px 2px rgb(236, 209, 210) }
```

Border

The CSS property to change the border of an element to XYZ 69.0254, 68.0869, 70.4768 is called "border". The border property can be set on classes, ids or directly on the HTML element.

This example shows the color as border, it can be applied via the CSS property "border" or "border-color".

```
.border, #border, table{ border:4px solid rgb(236, 209, 210) }
```


If only the border color should be changed use the property border-color.

```
.border{ border-color:rgb(236, 209, 210) }
```

If you want to add a box shadow in that color use:

Here you see how a box with a 4 pixel rgb(236, 209, 210) colored shadow looks like.

```
.boxshadow{ -moz-box-shadow:4px 4px 4px  
4px rgb(236, 209, 210); -webkit-box-  
shadow:4px 4px 4px 4px rgb(236, 209, 210);  
box-shadow:4px 4px 4px 4px rgb(236, 209,  
210) }
```

Background

The CSS property to change the background color of an element to XYZ 69.0254, 68.0869, 70.4768 is called "background". The background property can be set on classes, ids or directly on the HTML element.

```
.background, #background, body{  
background: rgb(236, 209, 210) }
```

If only the background color should be changed can be used:

```
.background{ background-color: rgb(236,  
209, 210) }
```

This example shows the color as background, it is applied via the CSS property "background".

To optimize and compress your CSS code, you can use our [online CSS compressor and optimizer](#) based on csstidy. If you want to create a linear or radial gradient as background or border, check our [CSS Gradient Generator](#).

Hey! You found this booklet interesting? Support Converting Colors with the new Membership Option!

The pro membership hides all ads, plus gives you double the colors in the color bucket, and more awesome pro features!

[Learn more, Memberships starting at \\$2.50/m!](#)

**Follow me
on Twitter!**

@ConvertingColor