

# Converting Colors

XYZ(69.1471, 67.5105, 66.5131)

Have a look what the booklet for  
XYZ(69.1471, 67.5105, 66.5131)  
contains.

<b>XYZ(69.1471, 67.5105, 66.5131)</b> .....	3
<b><i>Conversions</i></b> .....	4
<b><i>Details</i></b> .....	6
<b><i>Harmonies</i></b> .....	12
<b><i>Previews</i></b> .....	24
<b><i>Color Blindness Simulation</i></b> .....	28
<b><i>CSS Examples</i></b> .....	31

# Color

**XYZ(69.1471, 67.5105,  
66.5131)**

# Conversions

## Conversions Part 1

Format	Color
Hex	F0CFCC
RGB	240, 207, 204
RGB Percent	94%, 81%, 80%
CMY	0.0588, 0.1882, 0.2000
CMYK	0.00, 0.14, 0.15, 0.06
HSL	5°, 55%, 87%
HSV	5°, 15%, 94%
XYZ	69.1471, 67.5105, 66.5131
YIQ	216.5250, 20.6310, 6.0630

# Conversions

## Conversions Part 2

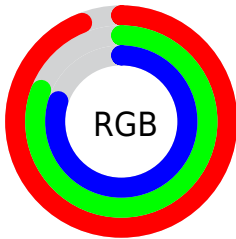
<b>Format</b>	<b>Color</b>
R <sub>Y</sub> B	240, 207, 204
Decimal	15781836
CIE Lab	85.76, 11.07, 5.75
CIE LCh	86, 12.472, 27.461
Yxy	67.5105, 0.3403, 0.3323
Android (android.graphics.Color)	4293971916 (0xFFFF0CFCC)
YUV	216.5250, -6.1748, 20.5876
Hunter-Lab	82.1648, 6.4312, 9.5196

# Details

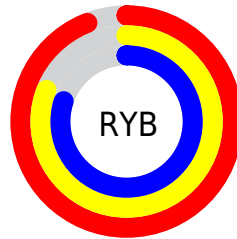
The XYZ color **69.1471, 67.5105, 66.5131** is a light color, and the websafe version is hex **FFCCCC**. A complement of this color would be **70.9138, 79.6954, 94.0840**, and the grayscale version is **65.6609, 69.0803, 75.2285**.

A 20% lighter version of the original color is **95.0500, 100.0000, 108.9000**, and **36.6634, 35.1748, 33.7112** is the 20% darker color. If you saturate the color by 10%, you get **61.5246, 56.5222, 50.8479**, and if you desaturate by 10%, it is **77.9594, 80.1672, 84.7648**.

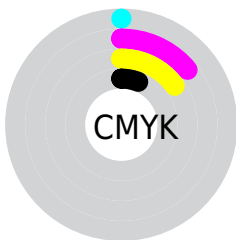
# Distribution



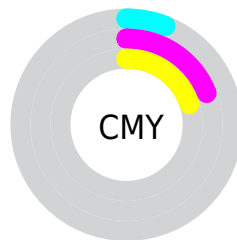
- Red (94%)
- Green (81%)
- Blue (80%)



- Red (94%)
- Yellow (81%)
- Blue (80%)



- Cyan (0%)
- Magenta (14%)
- Yellow (15%)
- Black (6%)



- Cyan (6%)
- Magenta (19%)
- Yellow (20%)

# Brightness & Saturation Gradients

These gradients show how the XYZ color 69.1471, 67.5105, 66.5131 changes by changing the brightness by 10 percent. The first figure shows a shift by +10% for each color and the second figure -10%.

Similar to the brightness gradients but the following saturation gradients show a change of the XYZ color 69.1471, 67.5105, 66.5131 by changing the saturation by 10% instead.



69.1471, 67.5105,  
66.5131

69.1471, 67.5105,  
66.5131

446.8629,  
451.7597, 466.6639

51.1086, 49.4996,  
48.2299

117.0246,  
115.6516, 115.8565

36.5164, 35.0160,  
33.6477

147.5942,  
146.5506, 147.7538

25.0053, 23.6752,  
22.3479

183.0717,  
182.5144, 185.0262

16.2097, 15.0928,  
13.9120

223.8223,  
223.9275, 228.0922

9.7645, 8.8846,  
7.9215

270.2113,  
271.1741, 277.3705

5.3041, 4.6660,  
3.9577

322.6042,

2.4634, 2.0526,

324.6388, 333.2795

1.6022

381.3663,  
384.7059, 396.2378

■ 0.8768, 0.6378,  
0.2924

■ 0.0000, 0.0000,  
0.0000

■ 69.1471, 67.5105,  
66.5131

■ 69.1471, 67.5105,  
66.5131

■ 61.5246, 56.5222,  
50.8479

■ 77.9594, 80.1672,  
84.7648

■ 55.0355, 47.1241,  
37.6482

■ 88.0037, 94.5483,  
105.7082

■ 49.6274, 39.2452,  
26.7897

■ 89.7455, 97.2654,  
108.6518

■ 45.2411, 32.8058,  
18.1353

■ 41.8123, 27.7185,  
11.5342

■ 39.2687, 23.8868,  
6.8160

■ 37.5282, 21.2013,  
3.7834

■ 36.4926, 19.5334,  
2.1948

■ 36.1862, 19.0267,  
1.7653

# Harmonies

## Analogous

The Analogous color harmony consists of three colors that are next to each other on the color wheel.



69.7917, 67.5105, 74.2042



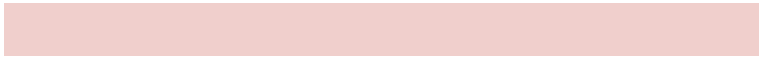
69.1471, 67.5105, 66.5131



67.1561, 67.5105, 61.0685

# Triad

The Triadic color harmony groups three colors that are evenly spaced from another and form a triangle on the color wheel.



69.1471, 67.5105, 66.5131



59.6621, 67.5105, 65.3940



63.9245, 67.5105, 90.3063

# Complementary

The Complementary color scheme is a pair of colors which are on the opposite of each other on the color wheel.



69.1471, 67.5105, 66.5131



70.9138, 79.6954, 94.0840

# Split Complementary

Split-complementary colors differ from the complementary color scheme. The scheme consists of three colors, the original color and two neighbors of the complement color.



61.2674, 67.5105, 87.5303



69.1471, 67.5105, 66.5131



58.8524, 67.5105, 72.8151

# Square

The Square scheme is like the rectangle color scheme, but the four colors are evenly spaced on the color wheel.



69.1471, 67.5105, 66.5131



61.6756, 67.5105, 60.4568



59.4314, 67.5105, 80.9757



66.7240, 67.5105, 88.3128



# Rectangle

The Rectangle color scheme consists of four colors that form a rectangle on the color wheel.



69.1471, 67.5105, 66.5131



65.3624, 67.5105, 59.2428



59.4314, 67.5105, 80.9757



62.9857, 67.5105, 89.8957

# Sweetspot

The Sweet Spot groups the original color and five complimentary colors.



69.1490, 67.5135, 66.5145



90.5407, 93.5399, 99.5092



72.8149, 67.8263, 89.3756



19.2034, 19.7690, 20.9331



0.0000, 0.0000, 0.0000



20.3446, 21.4041, 23.3091



# Same Dimension

The Same Dimension uses a secret algorithm to generate beautiful new colors.



69.1490, 67.5135, 66.5145



76.5378, 73.4219, 70.5244



73.7603, 76.7362, 68.0516



15.8788, 15.9707, 16.3955



19.8469, 10.4918, 0.9791



1.6873, 0.9453, 0.0935



# Inverse Universe

The Inverse Universe completely reimagines the original color for something new.



70.9138, 79.6954, 94.0840



78.9230, 89.8903, 107.7986



65.9624, 69.7926, 92.4336



16.1280, 17.6900, 20.2861



22.6639, 31.5521, 50.0235



1.9184, 2.6909, 4.1725



# Previews

## White Background



This preview shows how the XYZ color 69.1471, 67.5105, 66.5131 looks on a white background.

## Color Contrast Check

Large Text (above 18pt) WCAG AA × Fail

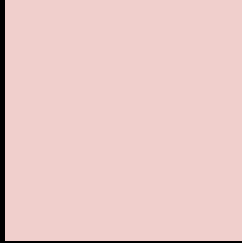
Any Text WCAG AA × Fail

Large Text (above 18pt) WCAG AAA × Fail

Any Text WCAG AAA × Fail



# Black Background



This preview shows how the XYZ color 69.1471, 67.5105, 66.5131 looks on a black background.

## Color Contrast Check

Large Text (above 18pt) WCAG AA ✓ Pass

Any Text WCAG AA ✓ Pass

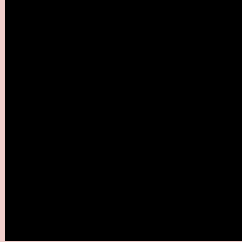
Large Text (above 18pt) WCAG AAA ✓ Pass

Any Text WCAG AAA ✓ Pass

If you want to check with other color combinations, try the [Color Contrast Checker](#).

# XYZ 69.1471, 67.5105, 66.5131

## Background



This preview shows how black text looks on a background with the XYZ color 69.1471, 67.5105, 66.5131.



This preview shows how white text looks on a background with the XYZ color 69.1471, 67.5105,

66.5131.

# Color Blindness Simulation

Color vision deficiency is a very complex topic, and I could not describe the different causes any better than Wikipedia does, so if you want to learn more, you should check out their [article about color blindness](#).

## Dichromacy



### Original Color

69.1471, 67.5105, 66.5131

### Protanopia

64.9469, 67.8628, 69.3503

### Deuteranopia

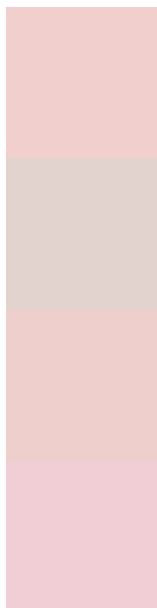
68.8085, 67.3360, 66.4973



## Tritanopia

71.1291, 67.2303, 76.9380

# Trichromacy



## Original Color

69.1471, 67.5105, 66.5131

## Protanomaly

66.2353, 67.4244, 68.5547

## Deuteranomaly

68.8085, 67.3360, 66.4973

## Tritanomaly

70.2445, 67.2185, 72.8905

# Monochromacy



## Original Color

69.1471, 67.5105, 66.5131

## Achromatopsia

65.9525, 69.3872, 75.5626

## Achromatomaly

66.7293, 68.3495, 71.9631

# CSS Examples

## Text

The CSS property to change the color of the text to XYZ 69.1471, 67.5105, 66.5131 is called "color". The color property can be set on classes, ids or directly on the HTML element.

This example shows how text in the color `rgb(240, 207, 204)` looks like.

```
.text, #text, p{  
    color:rgb(240, 207, 204)  
}
```

If you want to add a text shadow in that color use the text-shadow property, you can generate a text shadow directly with our [CSS Text Shadow Generator](#).

Here you see how black text with a 4 pixel rgb(240, 207, 204) colored shadow looks like.

```
.shadow{ text-shadow: 4px 4px 2px rgb(240, 207, 204) }
```

## Border

The CSS property to change the border of an element to XYZ 69.1471, 67.5105, 66.5131 is called "border". The border property can be set on classes, ids or directly on the HTML element.

This example shows the color as border, it can be applied via the CSS property "border" or "border-color".

```
.border, #border, table{ border:4px solid rgb(240, 207, 204) }
```



If only the border color should be changed use the property `border-color`.

```
.border{ border-color:rgb(240, 207, 204) }
```

If you want to add a box shadow in that color use:

Here you see how a box with a 4 pixel `rgb(240, 207, 204)` colored shadow looks like.

```
.boxshadow{ -moz-box-shadow:4px 4px 4px  
4px rgb(240, 207, 204); -webkit-box-  
shadow:4px 4px 4px 4px rgb(240, 207, 204);  
box-shadow:4px 4px 4px 4px rgb(240, 207,  
204) }
```

# Background

The CSS property to change the background color of an element to XYZ 69.1471, 67.5105, 66.5131 is called "background". The background property can be set on classes, ids or directly on the HTML element.

```
.background, #background, body{  
background: rgb(240, 207, 204) }
```

If only the background color should be changed can be used:

```
.background{ background-color: rgb(240,  
207, 204) }
```

This example shows the color as background, it is applied via the CSS property "background".

To optimize and compress your CSS code, you can use our [online CSS compressor and optimizer](#) based on csstidy. If you want to create a linear or radial gradient as background or border, check our [CSS Gradient Generator](#).

Hey! You found this booklet interesting? Support Converting Colors with the new Membership Option!

The pro membership hides all ads, plus gives you double the colors in the color bucket, and more awesome pro features!

**[Learn more, Memberships starting at \\$2.50/m!](#)**

**Follow me  
on Twitter!**

@ConvertingColor