

Converting Colors

XYZ(69.1592, 70.5306, 62.1932)

Have a look what the booklet for
XYZ(69.1592, 70.5306, 62.1932)
contains.

XYZ(69.1893, 70.5909, 62.2033)	3
<i>Conversions</i>	4
<i>Details</i>	6
<i>Harmonies</i>	12
<i>Previews</i>	24
<i>Color Blindness Simulation</i>	28
<i>CSS Examples</i>	31

Color

**XYZ(69.1893, 70.5909,
62.2033)**

Conversions

Conversions Part 1

Format	Color
Hex	EDD7C4
RGB	237, 215, 196
RGB Percent	93%, 84%, 77%
CMY	0.0706, 0.1568, 0.2314
CMYK	0.00, 0.09, 0.17, 0.07
HSL	28°, 53%, 85%
HSV	28°, 17%, 93%
XYZ	69.1893, 70.5909, 62.2033
YIQ	219.4120, 19.2110, -1.2450

Conversions

Conversions Part 2

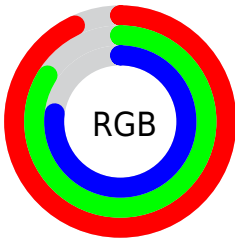
Format	Color
R _Y B	237, 231, 196
Decimal	15587268
CIE Lab	87.29, 4.59, 12.13
CIE LCh	87, 12.966, 69.287
Yxy	70.5909, 0.3425, 0.3495
Android (android.graphics.Color)	4293777348 (0xFFEDD7C4)
YUV	219.4120, -11.5421, 15.4247
Hunter-Lab	84.0184, -0.0371, 14.9173

Details

The XYZ color **69.1893, 70.5909, 62.2033** is a light color, and the websafe version is hex **CCCCCC**. A complement of this color would be **63.1221, 67.9915, 89.9181**, and the grayscale version is **67.6880, 71.2130, 77.5510**.

A 20% lighter version of the original color is **94.7296, 99.8718, 107.2129**, and **36.5093, 36.9184, 30.7929** is the 20% darker color. If you saturate the color by 10%, you get **63.5896, 63.3727, 48.0624**, and if you desaturate by 10%, it is **75.4706, 78.4892, 78.6754**.

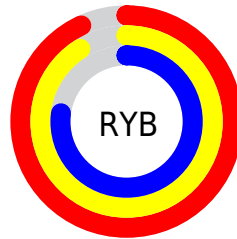
Distribution



Red (93%)

Green (84%)

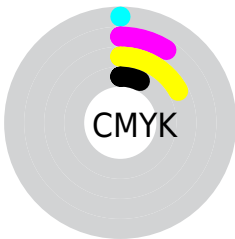
Blue (77%)



Red (93%)

Yellow (91%)

Blue (77%)

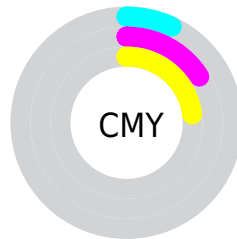


Cyan (0%)

Magenta (9%)

Yellow (17%)

Black (7%)



Cyan (7%)

Magenta (16%)

Yellow (23%)

Brightness & Saturation Gradients

These gradients show how the XYZ color 69.1893, 70.5909, 62.2033 changes by changing the brightness by 10 percent. The first figure shows a shift by +10% for each color and the second figure -10%.

Similar to the brightness gradients but the following saturation gradients show a change of the XYZ color 69.1893, 70.5909, 62.2033 by changing the saturation by 10% instead.

69.1893, 70.5909,
62.2033

69.1893, 70.5909,
62.2033

447.0093,
462.6220, 450.7004

51.1431, 52.0084,
44.7601

117.0845,
120.0510, 109.5937

36.5440, 37.0118,
30.9270

147.6642,
151.6975, 140.3781

25.0267, 25.2166,
20.2852

183.1525,
188.4673, 176.4466

16.2258, 16.2385,
12.4164

223.9146,
230.7450, 218.2178

9.7759, 9.6931,
6.9020

270.3160,
278.9150, 266.1103

5.3118, 5.1959,
3.3234

322.7220,

2.4679, 2.3627,

333.3615, 320.5425

1.2620

381.4980,
394.4691, 381.9330

■ 0.8791, 0.8066,
0.0304

■ 0.0000, 0.0000,
0.0000

■ 69.1893, 70.5909,
62.2033

■ 69.1893, 70.5909,
62.2033

■ 63.5896, 63.3727,
48.0624

■ 75.4706, 78.4892,
78.6754

■ 58.6403, 56.8057,
36.1412

■ 82.4520, 87.0765,
97.5743

■ 54.3156, 50.8727,
26.3257

■ 88.1477, 95.5695,
108.4086

■ 50.5861, 45.5520,
18.4899

■ 88.7353, 96.7447,
108.6045

■ 47.4191, 40.8205,
12.4942

■ 44.7784, 36.6530,
8.1803

■ 42.6223, 33.0217,
5.3625

■ 40.8979, 29.8937,
3.7983

■ 40.4857, 29.1254,
3.4879

Harmonies

Analogous

The Analogous color harmony consists of three colors that are next to each other on the color wheel.



71.7347, 70.5909, 66.7135



69.1893, 70.5909, 62.2033



66.1530, 70.5909, 61.4550

Triad

The Triadic color harmony groups three colors that are evenly spaced from another and form a triangle on the color wheel.



69.1893, 70.5909, 62.2033



61.4740, 70.5909, 79.6028



70.8753, 70.5909, 90.6015

Complementary

The Complementary color scheme is a pair of colors which are on the opposite of each other on the color wheel.



69.1893, 70.5909, 62.2033



63.1221, 67.9915, 89.9181

Split Complementary

Split-complementary colors differ from the complementary color scheme. The scheme consists of three colors, the original color and two neighbors of the complement color.



68.0450, 70.5909, 94.6490



69.1893, 70.5909, 62.2033



62.6589, 70.5909, 87.9897

Square

The Square scheme is like the rectangle color scheme, but the four colors are evenly spaced on the color wheel.



69.1893, 70.5909, 62.2033



61.7594, 70.5909, 71.0752



65.0425, 70.5909, 93.6585



72.7284, 70.5909, 82.9536

Rectangle

The Rectangle color scheme consists of four colors that form a rectangle on the color wheel.



69.1893, 70.5909, 62.2033



64.2676, 70.5909, 63.1290



65.0425, 70.5909, 93.6585



70.0032, 70.5909, 92.4536

Sweetspot

The Sweet Spot groups the original color and five complimentary colors.



69.1912, 70.5941, 62.2048



90.9212, 94.9190, 97.7305



67.3928, 62.5761, 75.2349



19.3403, 20.1673, 20.5949



0.0000, 0.0000, 0.0000



20.3446, 21.4041, 23.3091

Same Dimension

The Same Dimension uses a secret algorithm to generate beautiful new colors.



69.1912, 70.5941, 62.2048



79.1059, 80.0389, 66.8160



74.5836, 81.3788, 64.0022



15.6409, 16.2048, 15.8222



22.2320, 16.1582, 1.9471



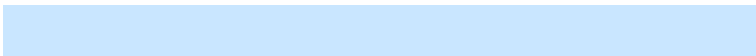
1.8411, 1.4595, 0.1847

Inverse Universe

The Inverse Universe completely reimagines the original color for something new.



63.1221, 67.9915, 89.9181



70.6050, 76.3929, 105.6318



58.2574, 58.2622, 88.2966



14.9005, 15.8874, 19.2035



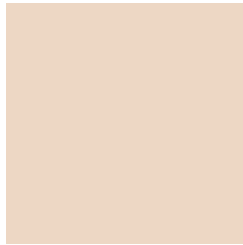
12.6322, 11.9115, 45.3763



1.0881, 1.1276, 3.5952

Previews

White Background



This preview shows how the XYZ color 69.1893, 70.5909, 62.2033 looks on a white background.

Color Contrast Check

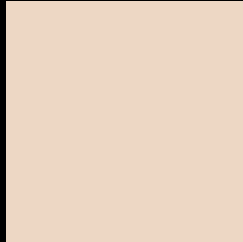
Large Text (above 18pt) WCAG AA × Fail

Any Text WCAG AA × Fail

Large Text (above 18pt) WCAG AAA × Fail

Any Text WCAG AAA × Fail

Black Background



This preview shows how the XYZ color 69.1893, 70.5909, 62.2033 looks on a black background.

Color Contrast Check

Large Text (above 18pt) WCAG AA ✓ Pass

Any Text WCAG AA ✓ Pass

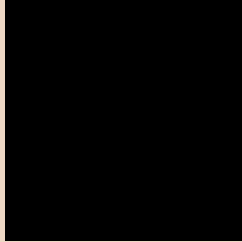
Large Text (above 18pt) WCAG AAA ✓ Pass

Any Text WCAG AAA ✓ Pass

If you want to check with other color combinations, try the [Color Contrast Checker](#).

XYZ 69.1893, 70.5909, 62.2033

Background



This preview shows how black text looks on a background with the XYZ color 69.1893, 70.5909, 62.2033.



This preview shows how white text looks on a background with the XYZ color 69.1893, 70.5909,

Color Blindness Simulation

Color vision deficiency is a very complex topic, and I could not describe the different causes any better than Wikipedia does, so if you want to learn more, you should check out their [article about color blindness](#).

Dichromacy



Original Color

69.1893, 70.5909, 62.2033

Protanopia

67.2594, 70.7140, 63.5303

Deuteranopia

72.0837, 70.5762, 62.6467



Tritanopia

73.1873, 70.3400, 82.3926

Trichromacy



Original Color

69.1893, 70.5909, 62.2033

Protanomaly

67.8459, 70.6459, 62.8835

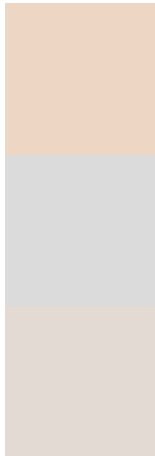
Deuteranomaly

70.9298, 70.3513, 62.6641

Tritanomaly

71.8733, 70.5701, 74.7990

Monochromacy



Original Color

69.1893, 70.5909, 62.2033

Achromatopsia

67.3311, 70.8376, 77.1421

Achromatomaly

68.1933, 71.0147, 71.7411

CSS Examples

Text

The CSS property to change the color of the text to XYZ 69.1893, 70.5909, 62.2033 is called "color". The color property can be set on classes, ids or directly on the HTML element.

This example shows how text in the color `rgb(237, 215, 196)` looks like.

```
.text, #text, p{  
    color:rgb(237, 215, 196)  
}
```

If you want to add a text shadow in that color use the text-shadow property, you can generate a text shadow directly with our [CSS Text Shadow Generator](#).

Here you see how black text with a 4 pixel rgb(237, 215, 196) colored shadow looks like.

```
.shadow{ text-shadow: 4px 4px 2px rgb(237, 215, 196) }
```

Border

The CSS property to change the border of an element to XYZ 69.1893, 70.5909, 62.2033 is called "border". The border property can be set on classes, ids or directly on the HTML element.

This example shows the color as border, it can be applied via the CSS property "border" or "border-color".

```
.border, #border, table{ border:4px solid rgb(237, 215, 196) }
```


If only the border color should be changed use the property border-color.

```
.border{ border-color:rgb(237, 215, 196) }
```

If you want to add a box shadow in that color use:

Here you see how a box with a 4 pixel rgb(237, 215, 196) colored shadow looks like.

```
.boxshadow{ -moz-box-shadow:4px 4px 4px  
4px rgb(237, 215, 196); -webkit-box-  
shadow:4px 4px 4px 4px rgb(237, 215, 196);  
box-shadow:4px 4px 4px 4px rgb(237, 215,  
196) }
```

Background

The CSS property to change the background color of an element to XYZ 69.1893, 70.5909, 62.2033 is called "background". The background property can be set on classes, ids or directly on the HTML element.

```
.background, #background, body{  
background: rgb(237, 215, 196) }
```

If only the background color should be changed can be used:

```
.background{ background-color: rgb(237,  
215, 196) }
```

This example shows the color as background, it is applied via the CSS property "background".

To optimize and compress your CSS code, you can use our [online CSS compressor and optimizer](#) based on csstidy. If you want to create a linear or radial gradient as background or border, check our [CSS Gradient Generator](#).

Hey! You found this booklet interesting? Support Converting Colors with the new Membership Option!

The pro membership hides all ads, plus gives you double the colors in the color bucket, and more awesome pro features!

[Learn more, Memberships starting at \\$2.50/m!](#)

**Follow me
on Twitter!**

@ConvertingColor