

Converting Colors

XYZ(69.2340, 68.9626, 71.3845)

Have a look what the booklet for
XYZ(69.2340, 68.9626, 71.3845)
contains.

XYZ(69.3131, 68.9538, 71.2842)	3
<i>Conversions</i>	4
<i>Details</i>	6
<i>Harmonies</i>	12
<i>Previews</i>	24
<i>Color Blindness Simulation</i>	28
<i>CSS Examples</i>	31

Color

**XYZ(69.3131, 68.9538,
71.2842)**

Conversions

Conversions Part 1

Format	Color
Hex	EBD3D3
RGB	235, 211, 211
RGB Percent	92%, 83%, 83%
CMY	0.0784, 0.1725, 0.1725
CMYK	0.00, 0.10, 0.10, 0.08
HSL	0°, 38%, 87%
HSV	0°, 10%, 92%
XYZ	69.3131, 68.9538, 71.2842
YIQ	218.1760, 14.3040, 5.0880

Conversions

Conversions Part 2

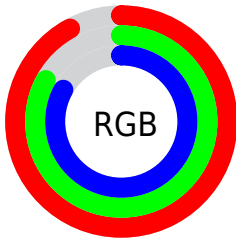
Format	Color
RYB	235, 211, 211
Decimal	15455187
CIELab	86.48, 8.32, 3.03
CIELCh	86, 8.856, 19.996
Yxy	68.9538, 0.3308, 0.3291
Android (android.graphics.Color)	4293645267 (0xFFEBD3D3)
YUV	218.1760, -3.5378, 14.7546
Hunter-Lab	83.0384, 3.6787, 7.2295

Details

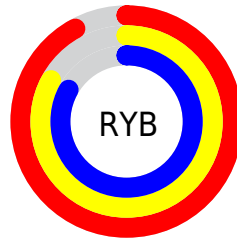
The XYZ color **69.3131, 68.9538, 71.2842** is a light color, and the websafe version is hex **CCCCCC**. A complement of this color would be **71.5675, 79.2624, 90.1253**, and the grayscale version is **66.7803, 70.2580, 76.5110**.

A 20% lighter version of the original color is **95.0500, 100.0000, 108.9000**, and **36.5647, 35.7950, 36.8802** is the 20% darker color. If you saturate the color by 10%, you get **61.1633, 57.0289, 55.0796**, and if you desaturate by 10%, it is **78.7507, 82.7634, 90.0446**.

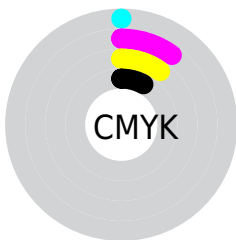
Distribution



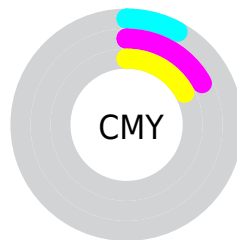
- Red (92%)
- Green (83%)
- Blue (83%)



- Red (92%)
- Yellow (83%)
- Blue (83%)



- Cyan (0%)
- Magenta (10%)
- Yellow (10%)
- Black (8%)



- Cyan (8%)
- Magenta (17%)
- Yellow (17%)

Brightness & Saturation Gradients

These gradients show how the XYZ color 69.3131, 68.9538, 71.2842 changes by changing the brightness by 10 percent. The first figure shows a shift by +10% for each color and the second figure -10%.

Similar to the brightness gradients but the following saturation gradients show a change of the XYZ color 69.3131, 68.9538, 71.2842 by changing the saturation by 10% instead.

69.3131, 68.9538,
71.2842

69.3131, 68.9538,
71.2842

447.4386,
456.8680, 483.9567

51.2443, 50.6741,
52.0909

117.2603,
117.7156, 122.7365

36.6249, 35.9493,
36.6948

147.8694,
148.9664, 155.8327

25.0895, 24.3950,
24.6773

183.3893,
185.3098, 194.4001

16.2729, 15.6269,
15.6200

224.1854,
227.1301, 238.8575

9.8095, 9.2605,
9.1042

270.6230,
274.8116, 289.6233

5.3341, 4.9115,
4.7115

323.0675,

2.4814, 2.1954,

328.7389, 347.1161

2.0232

381.8843,
389.2962, 411.7544

■ 0.8859, 0.7175,
0.5695

■ 0.0000, 0.0000,
0.0000

■ 69.3131, 68.9538,
71.2842

■ 69.3131, 68.9538,
71.2842

■ 61.1633, 57.0289,
55.0796

■ 78.7507, 82.7634,
90.0446

■ 54.2401, 46.8984,
41.3161

■ 88.0713, 96.4024,
108.5734

■ 48.4858, 38.4783,
29.8767

■ 43.8360, 31.6742,
20.6332

■ 40.2200, 26.3827,
13.4452

■ 37.5588, 22.4885,
8.1556

■ 35.7623, 19.8594,
4.5852

■ 34.7231, 18.3385,
2.5202

■ 34.2618, 17.6632,
1.6035

Harmonies

Analogous

The Analogous color harmony consists of three colors that are next to each other on the color wheel.



69.4977, 68.9538, 77.0572



69.3131, 68.9538, 71.2842



68.1054, 68.9538, 66.7589

Triad

The Triadic color harmony groups three colors that are evenly spaced from another and form a triangle on the color wheel.



69.3131, 68.9538, 71.2842



62.5651, 68.9538, 68.0529



64.8561, 68.9538, 86.7547

Complementary

The Complementary color scheme is a pair of colors which are on the opposite of each other on the color wheel.



69.3131, 68.9538, 71.2842



71.5675, 79.2624, 90.1253

Split Complementary

Split-complementary colors differ from the complementary color scheme. The scheme consists of three colors, the original color and two neighbors of the complement color.



63.0370, 68.9538, 84.0631



69.3131, 68.9538, 71.2842



61.7326, 68.9538, 73.1348

Square

The Square scheme is like the rectangle color scheme, but the four colors are evenly spaced on the color wheel.



69.3131, 68.9538, 71.2842



64.1997, 68.9538, 64.9618



61.9035, 68.9538, 79.0061



66.8958, 68.9538, 86.1955

Rectangle

The Rectangle color scheme consists of four colors that form a rectangle on the color wheel.



69.3131, 68.9538, 71.2842



66.8963, 68.9538, 64.9623



61.9035, 68.9538, 79.0061



64.1993, 68.9538, 86.1949

Sweetspot

The Sweet Spot groups the original color and five complimentary colors.



69.3150, 68.9568, 71.2857



91.4509, 94.7336, 101.7446



72.5515, 70.2498, 88.3339



19.3736, 19.9833, 21.3786



0.0000, 0.0000, 0.0000



20.3446, 21.4041, 23.3091

Same Dimension

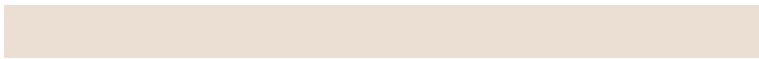
The Same Dimension uses a secret algorithm to generate beautiful new colors.



69.3150, 68.9568, 71.2857



81.5136, 80.1929, 81.9883



72.4074, 75.1417, 72.3165



15.0657, 15.0545, 15.6305



19.0681, 9.8305, 0.8925



1.4974, 0.7721, 0.0701

Inverse Universe

The Inverse Universe completely reimagines the original color for something new.



71.5675, 79.2624, 90.1253



84.6730, 94.6480, 108.4139



68.2480, 72.6234, 89.0188



15.5175, 17.1215, 19.4092



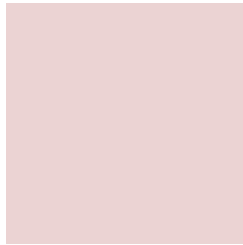
24.8735, 36.3939, 49.4567



1.9532, 2.8579, 3.8836

Previews

White Background



This preview shows how the XYZ color 69.3131, 68.9538, 71.2842 looks on a white background.

Color Contrast Check

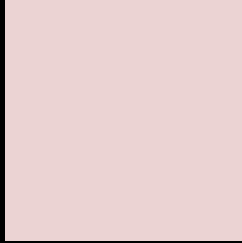
Large Text (above 18pt) WCAG AA × Fail

Any Text WCAG AA × Fail

Large Text (above 18pt) WCAG AAA × Fail

Any Text WCAG AAA × Fail

Black Background



This preview shows how the XYZ color 69.3131, 68.9538, 71.2842 looks on a black background.

Color Contrast Check

Large Text (above 18pt) WCAG AA ✓ Pass

Any Text WCAG AA ✓ Pass

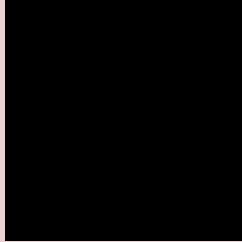
Large Text (above 18pt) WCAG AAA ✓ Pass

Any Text WCAG AAA ✓ Pass

If you want to check with other color combinations, try the [Color Contrast Checker](#).

XYZ 69.3131, 68.9538, 71.2842

Background



This preview shows how black text looks on a background with the XYZ color 69.3131, 68.9538, 71.2842.



This preview shows how white text looks on a background with the XYZ color 69.3131, 68.9538,

71.2842.

Color Blindness Simulation

Color vision deficiency is a very complex topic, and I could not describe the different causes any better than Wikipedia does, so if you want to learn more, you should check out their [article about color blindness](#).

Dichromacy



Original Color

69.3131, 68.9538, 71.2842

Protanopia

66.5123, 69.3389, 73.4965

Deuteranopia

70.1549, 68.6548, 71.1822



Tritanopia

71.3161, 69.0417, 80.8018

Trichromacy



Original Color

69.3131, 68.9538, 71.2842

Protanomaly

67.4208, 69.0660, 72.7284

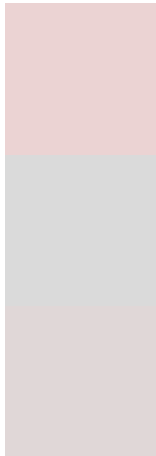
Deuteranomaly

70.0644, 68.9735, 71.2484

Tritanomaly

70.5569, 69.0934, 77.3277

Monochromacy



Original Color

69.3131, 68.9538, 71.2842

Achromatopsia

66.6397, 70.1102, 76.3500

Achromatomaly

67.3066, 69.3545, 74.1293

CSS Examples

Text

The CSS property to change the color of the text to XYZ 69.3131, 68.9538, 71.2842 is called "color". The color property can be set on classes, ids or directly on the HTML element.

This example shows how text in the color rgb(235, 211, 211) looks like.

```
.text, #text, p{  
    color:rgb(235, 211, 211)  
}
```

If you want to add a text shadow in that color use the text-shadow property, you can generate a text shadow directly with our [CSS Text Shadow Generator](#).

Here you see how black text with a 4 pixel rgb(235, 211, 211) colored shadow looks like.

```
.shadow{ text-shadow: 4px 4px 2px rgb(235, 211, 211) }
```

Border

The CSS property to change the border of an element to XYZ 69.3131, 68.9538, 71.2842 is called "border". The border property can be set on classes, ids or directly on the HTML element.

This example shows the color as border, it can be applied via the CSS property "border" or "border-color".

```
.border, #border, table{ border:4px solid rgb(235, 211, 211) }
```


If only the border color should be changed use the property `border-color`.

```
.border{ border-color:rgb(235, 211, 211) }
```

If you want to add a box shadow in that color use:

Here you see how a box with a 4 pixel `rgb(235, 211, 211)` colored shadow looks like.

```
.boxshadow{ -moz-box-shadow:4px 4px 4px  
4px rgb(235, 211, 211); -webkit-box-  
shadow:4px 4px 4px 4px rgb(235, 211, 211);  
box-shadow:4px 4px 4px 4px rgb(235, 211,  
211) }
```

Background

The CSS property to change the background color of an element to XYZ 69.3131, 68.9538, 71.2842 is called "background". The background property can be set on classes, ids or directly on the HTML element.

```
.background, #background, body{  
background: rgb(235, 211, 211) }
```

If only the background color should be changed can be used:

```
.background{ background-color: rgb(235,  
211, 211) }
```

This example shows the color as background, it is applied via the CSS property "background".

To optimize and compress your CSS code, you can use our [online CSS compressor and optimizer](#) based on csstidy. If you want to create a linear or radial gradient as background or border, check our [CSS Gradient Generator](#).

Hey! You found this booklet interesting? Support Converting Colors with the new Membership Option!

The pro membership hides all ads, plus gives you double the colors in the color bucket, and more awesome pro features!

[Learn more, Memberships starting at \\$2.50/m!](#)

**Follow me
on Twitter!**

@ConvertingColor