

Converting Colors

XYZ(69.2479, 67.8834, 73.8009)

Have a look what the booklet for
XYZ(69.2479, 67.8834, 73.8009)
contains.

XYZ(69.0826, 67.6802, 73.7125)	3
<i>Conversions</i>	4
<i>Details</i>	6
<i>Harmonies</i>	12
<i>Previews</i>	24
<i>Color Blindness Simulation</i>	28
<i>CSS Examples</i>	31

Color

**XYZ(69.0826, 67.6802,
73.7125)**

Conversions

Conversions Part 1

Format	Color
Hex	EBD0D7
RGB	235, 208, 215
RGB Percent	92%, 82%, 84%
CMY	0.0784, 0.1843, 0.1569
CMYK	0.00, 0.11, 0.09, 0.08
HSL	344°, 40%, 87%
HSV	344°, 11%, 92%
XYZ	69.0826, 67.6802, 73.7125
YIQ	216.8710, 13.8450, 7.9010

Conversions

Conversions Part 2

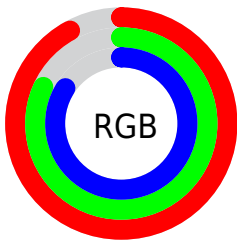
Format	Color
R _Y B	235, 208, 215
Decimal	15454423
CIE Lab	85.85, 10.56, -0.02
CIE LCh	86, 10.560, 359.913
Yxy	67.6802, 0.3282, 0.3216
Android (android.graphics.Color)	4293644503 (0xFFEBD0D7)
YUV	216.8710, -0.9224, 15.8991
Hunter-Lab	82.2680, 5.9222, 4.4635

Details

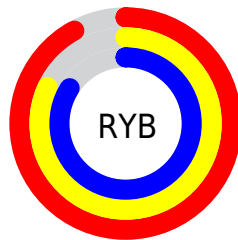
The XYZ color **69.0826, 67.6802, 73.7125** is a light color, and the websafe version is hex **FFCCCC**. A complement of this color would be **69.7270, 78.4298, 84.8662**, and the grayscale version is **65.8661, 69.2962, 75.4636**.

A 20% lighter version of the original color is **95.0500, 100.0000, 108.9000**, and **36.4912, 35.2330, 38.1351** is the 20% darker color. If you saturate the color by 10%, you get **61.6530, 56.2121, 60.7798**, and if you desaturate by 10%, it is **77.6030, 80.9473, 88.1850**.

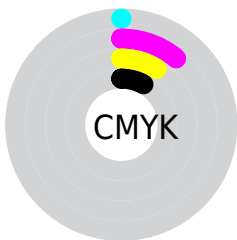
Distribution



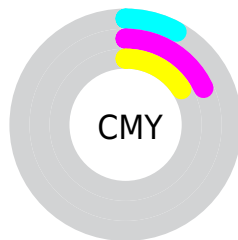
- Red (92%)
- Green (82%)
- Blue (84%)



- Red (92%)
- Yellow (82%)
- Blue (84%)



- Cyan (0%)
- Magenta (11%)
- Yellow (9%)
- Black (8%)



- Cyan (8%)
- Magenta (18%)
- Yellow (16%)

Brightness & Saturation Gradients

These gradients show how the XYZ color 69.0826, 67.6802, 73.7125 changes by changing the brightness by 10 percent. The first figure shows a shift by +10% for each color and the second figure -10%.

Similar to the brightness gradients but the following saturation gradients show a change of the XYZ color 69.0826, 67.6802, 73.7125 by changing the saturation by 10% instead.

69.0826, 67.6802,
73.7125

69.0826, 67.6802,
73.7125

446.6391,
452.3621, 492.6174

51.0559, 49.6376,
54.0634

116.9330,
115.8945, 126.2184

36.4743, 35.1255,
38.2588

147.4873,
146.8351, 159.9124

24.9725, 23.7596,
25.8802

182.9482,
182.8437, 199.1250

16.1852, 15.1554,
16.5091

223.6811,
224.3048, 244.2748

9.7470, 8.9285,
9.7269

270.0513,
271.6028, 295.7805

5.2925, 4.6946,
5.1150

322.4241,

2.4564, 2.0692,

325.1221, 354.0604

2.2550

381.1649,
385.2471, 419.5332

■ 0.8733, 0.6472,
0.7058

■ 0.0000, 0.0000,
0.0000

■ 69.0826, 67.6802,
73.7125

■ 69.0826, 67.6802,
73.7125

■ 61.6530, 56.2121,
60.7798

■ 77.6030, 80.9473,
88.1850

■ 55.2639, 46.4566,
49.3312

■ 87.2487, 96.0733,
104.2414

■ 49.8694, 38.3338,
39.3137

■ 88.0714, 96.4024,
108.5734

■ 45.4180, 31.7536,
30.6695

■ 41.8533, 26.6174,
23.3369

■ 39.1128, 22.8149,
17.2489

■ 37.1253, 20.2197,
12.3324

■ 35.8064, 18.6808,
8.5052

■ 35.1010, 17.9982,
6.0248

Harmonies

Analogous

The Analogous color harmony consists of three colors that are next to each other on the color wheel.



68.4288, 67.6802, 80.5600



69.0826, 67.6802, 73.7125



68.4361, 67.6802, 67.2594

Triad

The Triadic color harmony groups three colors that are evenly spaced from another and form a triangle on the color wheel.



69.0826, 67.6802, 73.7125



62.0408, 67.6802, 62.7590



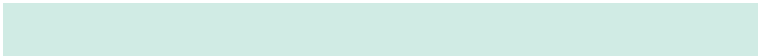
62.0288, 67.6802, 85.8044

Complementary

The Complementary color scheme is a pair of colors which are on the opposite of each other on the color wheel.



69.0826, 67.6802, 73.7125



69.7270, 78.4298, 84.8662

Split Complementary

Split-complementary colors differ from the complementary color scheme. The scheme consists of three colors, the original color and two neighbors of the complement color.



60.3876, 67.6802, 80.5227



69.0826, 67.6802, 73.7125



60.3944, 67.6802, 67.2264

Square

The Square scheme is like the rectangle color scheme, but the four colors are evenly spaced on the color wheel.



69.0826, 67.6802, 73.7125



64.3351, 67.6802, 61.1812



59.7967, 67.6802, 73.6720



64.3209, 67.6802, 87.8022

Rectangle

The Rectangle color scheme consists of four colors that form a rectangle on the color wheel.



69.0826, 67.6802, 73.7125



67.3638, 67.6802, 63.9819



59.7967, 67.6802, 73.6720



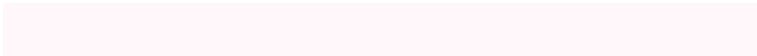
61.3848, 67.6802, 84.3385

Sweetspot

The Sweet Spot groups the original color and five complimentary colors.



69.0845, 67.6832, 73.7139



91.7587, 94.8561, 103.3675



69.4850, 67.5743, 87.9791



19.4563, 20.0162, 21.8147



0.0000, 0.0000, 0.0000



20.3446, 21.4041, 23.3091

Same Dimension

The Same Dimension uses a secret algorithm to generate beautiful new colors.



69.0845, 67.6832, 73.7139



80.7302, 77.7118, 84.5459



69.7709, 70.4641, 69.6017



15.2257, 15.1181, 16.4737



19.5792, 10.0344, 3.5856



1.5757, 0.8033, 0.4831

Inverse Universe

The Inverse Universe completely reimagines the original color for something new.



69.0845, 67.6832, 73.7139



80.7302, 77.7118, 84.5459



68.9465, 75.2829, 89.4954



15.2257, 15.1181, 16.4737



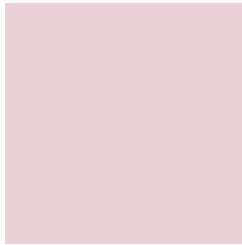
19.5792, 10.0344, 3.5856



1.5757, 0.8033, 0.4831

Previews

White Background



This preview shows how the XYZ color 69.0826, 67.6802, 73.7125 looks on a white background.

Color Contrast Check

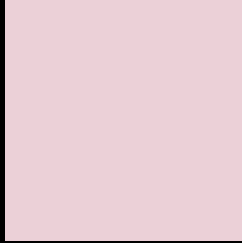
Large Text (above 18pt) WCAG AA × Fail

Any Text WCAG AA × Fail

Large Text (above 18pt) WCAG AAA × Fail

Any Text WCAG AAA × Fail

Black Background



This preview shows how the XYZ color 69.0826, 67.6802, 73.7125 looks on a black background.

Color Contrast Check

Large Text (above 18pt) WCAG AA ✓ Pass

Any Text WCAG AA ✓ Pass

Large Text (above 18pt) WCAG AAA ✓ Pass

Any Text WCAG AAA ✓ Pass

If you want to check with other color combinations, try the [Color Contrast Checker](#).

XYZ 69.0826, 67.6802, 73.7125

Background



This preview shows how black text looks on a background with the XYZ color 69.0826, 67.6802, 73.7125.



This preview shows how white text looks on a background with the XYZ color 69.0826, 67.6802,

Color Blindness Simulation

Color vision deficiency is a very complex topic, and I could not describe the different causes any better than Wikipedia does, so if you want to learn more, you should check out their [article about color blindness](#).

Dichromacy



Original Color

69.0826, 67.6802, 73.7125

Protanopia

65.3167, 67.9068, 75.9944

Deuteranopia

69.0826, 67.6802, 73.7125



Tritanopia

70.2242, 67.7862, 79.1949

Trichromacy



Original Color

69.0826, 67.6802, 73.7125

Protanomaly

66.8083, 67.9440, 75.2390

Deuteranomaly

69.0826, 67.6802, 73.7125

Tritanomaly

69.8232, 67.6258, 77.0832

Monochromacy



Original Color

69.0826, 67.6802, 73.7125

Achromatopsia

65.9525, 69.3872, 75.5626

Achromatomaly

67.1817, 68.8983, 74.7236

CSS Examples

Text

The CSS property to change the color of the text to XYZ 69.0826, 67.6802, 73.7125 is called "color". The color property can be set on classes, ids or directly on the HTML element.

This example shows how text in the color `rgb(235, 208, 215)` looks like.

```
.text, #text, p{  
    color:rgb(235, 208, 215)  
}
```

If you want to add a text shadow in that color use the text-shadow property, you can generate a text shadow directly with our [CSS Text Shadow Generator](#).

Here you see how black text with a 4 pixel rgb(235, 208, 215) colored shadow looks like.

```
.shadow{ text-shadow: 4px 4px 2px rgb(235, 208, 215) }
```

Border

The CSS property to change the border of an element to XYZ 69.0826, 67.6802, 73.7125 is called "border". The border property can be set on classes, ids or directly on the HTML element.

This example shows the color as border, it can be applied via the CSS property "border" or "border-color".

```
.border, #border, table{ border:4px solid rgb(235, 208, 215) }
```


If only the border color should be changed use the property `border-color`.

```
.border{ border-color:rgb(235, 208, 215) }
```

If you want to add a box shadow in that color use:

Here you see how a box with a 4 pixel `rgb(235, 208, 215)` colored shadow looks like.

```
.boxshadow{ -moz-box-shadow:4px 4px 4px  
4px rgb(235, 208, 215); -webkit-box-  
shadow:4px 4px 4px 4px rgb(235, 208, 215);  
box-shadow:4px 4px 4px 4px rgb(235, 208,  
215) }
```

Background

The CSS property to change the background color of an element to XYZ 69.0826, 67.6802, 73.7125 is called "background". The background property can be set on classes, ids or directly on the HTML element.

```
.background, #background, body{  
background: rgb(235, 208, 215) }
```

If only the background color should be changed can be used:

```
.background{ background-color: rgb(235,  
208, 215) }
```

This example shows the color as background, it is applied via the CSS property "background".

To optimize and compress your CSS code, you can use our [online CSS compressor and optimizer](#) based on csstidy. If you want to create a linear or radial gradient as background or border, check our [CSS Gradient Generator](#).

Hey! You found this booklet interesting? Support Converting Colors with the new Membership Option!

The pro membership hides all ads, plus gives you double the colors in the color bucket, and more awesome pro features!

[Learn more, Memberships starting at \\$2.50/m!](#)

**Follow me
on Twitter!**

@ConvertingColor