

# Converting Colors

XYZ(69.3222, 69.0840, 74.1360)

Have a look what the booklet for  
XYZ(69.3222, 69.0840, 74.1360)  
contains.

<b>XYZ(69.4135, 69.3169, 74.0110)</b> .....	3
<b><i>Conversions</i></b> .....	4
<b><i>Details</i></b> .....	6
<b><i>Harmonies</i></b> .....	12
<b><i>Previews</i></b> .....	24
<b><i>Color Blindness Simulation</i></b> .....	28
<b><i>CSS Examples</i></b> .....	31

# Color

**XYZ(69.4135, 69.3169,  
74.0110)**

# Conversions

## Conversions Part 1

Format	Color
Hex	E9D4D7
RGB	233, 212, 215
RGB Percent	91%, 83%, 84%
CMY	0.0863, 0.1686, 0.1569
CMYK	0.00, 0.09, 0.08, 0.09
HSL	351°, 32%, 87%
HSV	351°, 9%, 91%
XYZ	69.4135, 69.3169, 74.0110
YIQ	218.6210, 11.5530, 5.3850

# Conversions

## Conversions Part 2

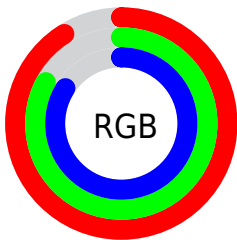
<b>Format</b>	<b>Color</b>
<b>R<sub>YB</sub></b>	233, 212, 215
Decimal	15324375
CIE Lab	86.66, 7.77, 1.15
CIE LCh	87, 7.851, 8.434
Yxy	69.3169, 0.3263, 0.3258
Android (android.graphics.Color)	4293514455 (0xFFE9D4D7)
YUV	218.6210, -1.7852, 12.6104
Hunter-Lab	83.2568, 3.1211, 5.5740

# Details

The XYZ color **69.4135, 69.3169, 74.0110** is a light color, and the websafe version is hex **CCCCCC**. A complement of this color would be **70.5759, 77.9898, 86.2005**, and the grayscale version is **67.0774, 70.5707, 76.8515**.

A 20% lighter version of the original color is **95.0500, 100.0000, 108.9000**, and **36.5336, 35.9991, 38.2807** is the 20% darker color. If you saturate the color by 10%, you get **61.5922, 57.5337, 59.5041**, and if you desaturate by 10%, it is **78.3926, 82.9125, 90.4517**.

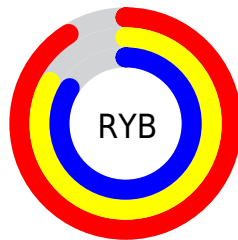
# Distribution



Red (91%)

Green (83%)

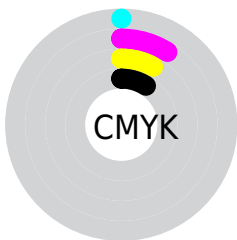
Blue (84%)



Red (91%)

Yellow (83%)

Blue (84%)

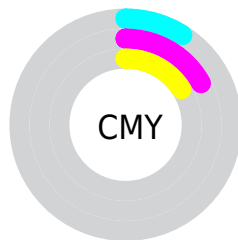


Cyan (0%)

Magenta (9%)

Yellow (8%)

Black (9%)



Cyan (9%)

Magenta (17%)

Yellow (16%)

# Brightness & Saturation Gradients

These gradients show how the XYZ color 69.4135, 69.3169, 74.0110 changes by changing the brightness by 10 percent. The first figure shows a shift by +10% for each color and the second figure -10%.

Similar to the brightness gradients but the following saturation gradients show a change of the XYZ color 69.4135, 69.3169, 74.0110 by changing the saturation by 10% instead.



69.4135, 69.3169,  
74.0110

69.4135, 69.3169,  
74.0110

447.7866,  
458.1479, 493.6758

51.3264, 50.9698,  
54.3062

117.4028,  
118.2341, 126.6456

36.6905, 36.1846,  
38.4517

148.0358,  
149.5730, 160.4125

25.1406, 24.5768,  
26.0289

183.5814,  
186.0113, 199.7038

16.3111, 15.7620,  
16.6193

224.4050,  
227.9335, 244.9380

9.8368, 9.3559,  
9.8044

270.8719,  
275.7238, 296.5338

5.3523, 4.9741,  
5.1655

323.3476,

2.4923, 2.2320,

329.7667, 354.9097

2.2843

382.1974,  
390.4466, 420.4842

■ 0.8914, 0.7374,  
0.7224

■ 0.0000, 0.0000,  
0.0000

■ 69.4135, 69.3169,  
74.0110

■ 69.4135, 69.3169,  
74.0110

■ 61.5922, 57.5337,  
59.5041

■ 78.3926, 82.9125,  
90.4517

■ 54.8759, 47.4777,  
46.8555

■ 87.4069, 96.0607,  
108.5021

■ 49.2160, 39.0703,  
35.9910

■ 87.4146, 96.0638,  
108.5427

■ 44.5585, 32.2232,  
26.8299

■ 40.8442, 26.8402,  
19.2853

■ 38.0076, 22.8140,  
13.2625

■ 35.9750, 20.0229,  
8.6566

■ 34.6597, 18.3230,  
5.3494

■ 33.9364, 17.4965,  
3.1961

# Harmonies

## Analogous

The Analogous color harmony consists of three colors that are next to each other on the color wheel.



69.1988, 69.3169, 79.2262



69.4135, 69.3169, 74.0110



68.6688, 69.3169, 69.4023

# Triad

The Triadic color harmony groups three colors that are evenly spaced from another and form a triangle on the color wheel.



69.4135, 69.3169, 74.0110



63.7279, 69.3169, 67.8779



64.6031, 69.3169, 85.2043

# Complementary

The Complementary color scheme is a pair of colors which are on the opposite of each other on the color wheel.



69.4135, 69.3169, 74.0110



70.5759, 77.9898, 86.2005

# Split Complementary

Split-complementary colors differ from the complementary color scheme. The scheme consists of three colors, the original color and two neighbors of the complement color.



63.1748, 69.3169, 81.8905



69.4135, 69.3169, 74.0110



62.6761, 69.3169, 71.8428

# Square

The Square scheme is like the rectangle color scheme, but the four colors are evenly spaced on the color wheel.



69.4135, 69.3169, 74.0110



65.3707, 69.3169, 65.9699



62.4755, 69.3169, 76.9568



66.3993, 69.3169, 85.8504



# Rectangle

The Rectangle color scheme consists of four colors that form a rectangle on the color wheel.



69.4135, 69.3169, 74.0110



67.7364, 69.3169, 67.2370



62.4755, 69.3169, 76.9568



64.0650, 69.3169, 84.3583

# Sweetspot

The Sweet Spot groups the original color and five complimentary colors.



69.4155, 69.3199, 74.0125



91.6198, 94.8006, 102.6360



70.8386, 69.7715, 86.8253



19.4190, 20.0013, 21.6180



0.0000, 0.0000, 0.0000



20.3446, 21.4041, 23.3091

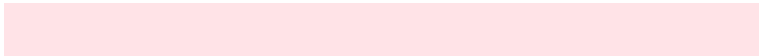


# Same Dimension

The Same Dimension uses a secret algorithm to generate beautiful new colors.



69.4155, 69.3199, 74.0125



83.1125, 81.9377, 87.0012



70.9130, 72.9255, 72.6295



15.1530, 15.0891, 16.0911



19.2524, 9.9036, 1.8645



1.5391, 0.7886, 0.2905



# Inverse Universe

The Inverse Universe completely reimagines the original color for something new.



69.4155, 69.3199, 74.0125



83.1125, 81.9377, 87.0012



68.9631, 74.0851, 87.7568



15.1530, 15.0891, 16.0911



19.2524, 9.9036, 1.8645

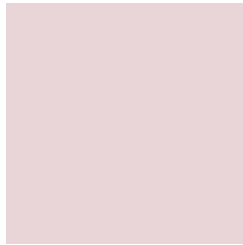


1.5391, 0.7886, 0.2905



# Previews

## White Background



This preview shows how the XYZ color 69.4135, 69.3169, 74.0110 looks on a white background.

## Color Contrast Check

Large Text (above 18pt) WCAG AA × Fail

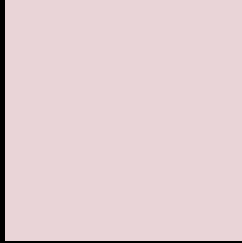
Any Text WCAG AA × Fail

Large Text (above 18pt) WCAG AAA × Fail

Any Text WCAG AAA × Fail



# Black Background



This preview shows how the XYZ color 69.4135, 69.3169, 74.0110 looks on a black background.

## Color Contrast Check

Large Text (above 18pt) WCAG AA ✓ Pass

Any Text WCAG AA ✓ Pass

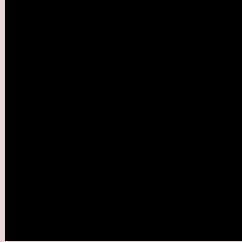
Large Text (above 18pt) WCAG AAA ✓ Pass

Any Text WCAG AAA ✓ Pass

If you want to check with other color combinations, try the [Color Contrast Checker](#).

# XYZ 69.4135, 69.3169, 74.0110

## Background



This preview shows how black text looks on a background with the XYZ color 69.4135, 69.3169, 74.0110.



This preview shows how white text looks on a background with the XYZ color 69.4135, 69.3169,

74.0110.

# Color Blindness Simulation

Color vision deficiency is a very complex topic, and I could not describe the different causes any better than Wikipedia does, so if you want to learn more, you should check out their [article about color blindness](#).

## Dichromacy



### Original Color

69.4135, 69.3169, 74.0110

### Protanopia

66.8990, 69.4936, 75.5333

### Deuteranopia

70.5722, 69.1766, 73.9228



## Tritanopia

71.1727, 69.3014, 82.2984

# Trichromacy



## Original Color

69.4135, 69.3169, 74.0110

## Protanomaly

67.7464, 69.5663, 74.8228

## Deuteranomaly

70.1521, 69.3277, 73.9741

## Tritanomaly

70.5452, 69.4087, 79.4911

# Monochromacy



## Original Color

69.4135, 69.3169, 74.0110

## Achromatopsia

67.3311, 70.8376, 77.1421

## Achromatomaly

67.9512, 70.0210, 76.2637

# CSS Examples

## Text

The CSS property to change the color of the text to XYZ 69.4135, 69.3169, 74.0110 is called "color". The color property can be set on classes, ids or directly on the HTML element.

This example shows how text in the color `rgb(233, 212, 215)` looks like.

```
.text, #text, p{  
    color:rgb(233, 212, 215)  
}
```

If you want to add a text shadow in that color use the text-shadow property, you can generate a text shadow directly with our [CSS Text Shadow Generator](#).

Here you see how black text with a 4 pixel rgb(233, 212, 215) colored shadow looks like.

```
.shadow{ text-shadow: 4px 4px 2px rgb(233, 212, 215) }
```

## Border

The CSS property to change the border of an element to XYZ 69.4135, 69.3169, 74.0110 is called "border". The border property can be set on classes, ids or directly on the HTML element.

This example shows the color as border, it can be applied via the CSS property "border" or "border-color".

```
.border, #border, table{ border:4px solid rgb(233, 212, 215) }
```



If only the border color should be changed use the property `border-color`.

```
.border{ border-color:rgb(233, 212, 215) }
```

If you want to add a box shadow in that color use:

Here you see how a box with a 4 pixel `rgb(233, 212, 215)` colored shadow looks like.

```
.boxshadow{ -moz-box-shadow:4px 4px 4px  
4px rgb(233, 212, 215); -webkit-box-  
shadow:4px 4px 4px 4px rgb(233, 212, 215);  
box-shadow:4px 4px 4px 4px rgb(233, 212,  
215) }
```

# Background

The CSS property to change the background color of an element to XYZ 69.4135, 69.3169, 74.0110 is called "background". The background property can be set on classes, ids or directly on the HTML element.

```
.background, #background, body{  
background: rgb(233, 212, 215) }
```

If only the background color should be changed can be used:

```
.background{ background-color: rgb(233,  
212, 215) }
```

This example shows the color as background, it is applied via the CSS property "background".

To optimize and compress your CSS code, you can use our [online CSS compressor and optimizer](#) based on csstidy. If you want to create a linear or radial gradient as background or border, check our [CSS Gradient Generator](#).

Hey! You found this booklet interesting? Support Converting Colors with the new Membership Option!

The pro membership hides all ads, plus gives you double the colors in the color bucket, and more awesome pro features!

**[Learn more, Memberships starting at \\$2.50/m!](#)**

**Follow me  
on Twitter!**

@ConvertingColor