

Converting Colors

XYZ(69.3810, 69.0240, 72.1511)

Have a look what the booklet for
XYZ(69.3810, 69.0240, 72.1511)
contains.

XYZ(69.4389, 69.0042, 71.9467)	3
<i>Conversions</i>	4
<i>Details</i>	6
<i>Harmonies</i>	12
<i>Previews</i>	24
<i>Color Blindness Simulation</i>	28
<i>CSS Examples</i>	31

Color

**XYZ(69.4389, 69.0042,
71.9467)**

Conversions

Conversions Part 1

Format	Color
Hex	EBD3D4
RGB	235, 211, 212
RGB Percent	92%, 83%, 83%
CMY	0.0784, 0.1725, 0.1686
CMYK	0.00, 0.10, 0.10, 0.08
HSL	358°, 37%, 87%
HSV	358°, 10%, 92%
XYZ	69.4389, 69.0042, 71.9467
YIQ	218.2900, 13.9830, 5.3990

Conversions

Conversions Part 2

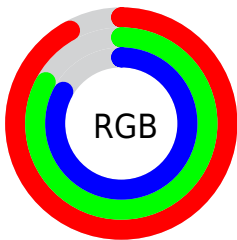
Format	Color
R _Y B	235, 211, 212
Decimal	15455188
CIE Lab	86.51, 8.49, 2.54
CIE LCh	87, 8.858, 16.632
Yxy	69.0042, 0.3300, 0.3280
Android (android.graphics.Color)	4293645268 (0xFFEBD3D4)
YUV	218.2900, -3.1010, 14.6547
Hunter-Lab	83.0688, 3.8415, 6.7965

Details

The XYZ color **69.4389, 69.0042, 71.9467** is a light color, and the websafe version is hex **CCCCCC**. A complement of this color would be **71.4263, 79.2078, 89.3699**, and the grayscale version is **66.8563, 70.3380, 76.5981**.

A 20% lighter version of the original color is **95.0500, 100.0000, 108.9000**, and **36.5647, 35.7950, 36.8802** is the 20% darker color. If you saturate the color by 10%, you get **61.3762, 57.1128, 56.2049**, and if you desaturate by 10%, it is **78.7554, 82.7672, 90.0638**.

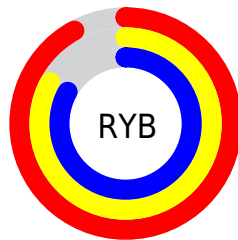
Distribution



Red (92%)

Green (83%)

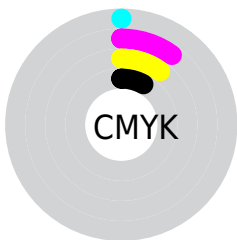
Blue (83%)



Red (92%)

Yellow (83%)

Blue (83%)

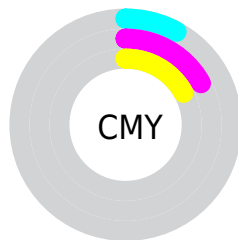


Cyan (0%)

Magenta (10%)

Yellow (10%)

Black (8%)



Cyan (8%)


Magenta (17%)


Yellow (17%)

Brightness & Saturation Gradients


These gradients show how the XYZ color 69.4389, 69.0042, 71.9467 changes by changing the brightness by 10 percent. The first figure shows a shift by +10% for each color and the second figure -10%.

Similar to the brightness gradients but the following saturation gradients show a change of the XYZ color 69.4389, 69.0042, 71.9467 by changing the saturation by 10% instead.


 69.4389, 69.0042,
71.9467

 69.4389, 69.0042,
71.9467


447.8746,
457.0458, 486.3286

 51.3472, 50.7151,
52.6286


117.4389,
117.7876, 123.6878

 36.7071, 35.9819,
37.1206


148.0778,
149.0507, 156.9478

 25.1535, 24.4203,
25.0044


183.6299,
185.4072, 195.6922

 16.3208, 15.6457,
15.8613

224.4605,
227.2416, 240.3395

 9.8437, 9.2738,
9.2728

270.9349,
274.9383, 291.3082

 5.3569, 4.9202,
4.8203

323.4185,

 2.4951, 2.2005,

328.8816, 349.0170

2.0853

382.2766,
389.4560, 413.8843

■ 0.8928, 0.7203,
0.6070

■ 0.0000, 0.0000,
0.0000

■ 69.4389, 69.0042,
71.9467

■ 69.4389, 69.0042,
71.9467

■ 61.3762, 57.1128,
56.2049

■ 78.7554, 82.7672,
90.0638

■ 54.5083, 47.0035,
42.7356

■ 88.0713, 96.4023,
108.5734

■ 48.7802, 38.5933,
31.4353

■ 44.1300, 31.7889,
22.1906

■ 40.4904, 26.4881,
14.8779

■ 37.7861, 22.5770,
9.3602

■ 35.9317, 19.9255,
5.4827

■ 34.8258, 18.3785,
3.0644

■ 34.3147, 17.6837,
1.8848

Harmonies

Analogous

The Analogous color harmony consists of three colors that are next to each other on the color wheel.



69.4993, 69.0042, 77.7761



69.4389, 69.0042, 71.9467



68.3325, 69.0042, 67.2173

Triad

The Triadic color harmony groups three colors that are evenly spaced from another and form a triangle on the color wheel.



69.4389, 69.0042, 71.9467



62.7606, 69.0042, 67.6406



64.6787, 69.0042, 86.6689

Complementary

The Complementary color scheme is a pair of colors which are on the opposite of each other on the color wheel.



69.4389, 69.0042, 71.9467



71.4263, 79.2078, 89.3699

Split Complementary

Split-complementary colors differ from the complementary color scheme. The scheme consists of three colors, the original color and two neighbors of the complement color.



62.9150, 69.0042, 83.6488



69.4389, 69.0042, 71.9467



61.8232, 69.0042, 72.5521

Square

The Square scheme is like the rectangle color scheme, but the four colors are evenly spaced on the color wheel.



69.4389, 69.0042, 71.9467



64.4639, 69.0042, 64.8213



61.8791, 69.0042, 78.4137



66.7219, 69.0042, 86.4859

Rectangle

The Rectangle color scheme consists of four colors that form a rectangle on the color wheel.



69.4389, 69.0042, 71.9467



67.1634, 69.0042, 65.2336



61.8791, 69.0042, 78.4137



64.0343, 69.0042, 85.9882

Sweetspot

The Sweet Spot groups the original color and five complimentary colors.



69.4408, 69.0072, 71.9482



91.4996, 94.7525, 102.0032



72.1577, 70.0484, 88.3156



19.3867, 19.9884, 21.4480



0.0000, 0.0000, 0.0000



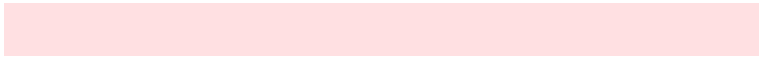
20.3446, 21.4041, 23.3091

Same Dimension

The Same Dimension uses a secret algorithm to generate beautiful new colors.



69.4408, 69.0072, 71.9482



81.6855, 80.2595, 82.9006



72.0890, 74.5041, 72.2130



15.0908, 15.0642, 15.7635



19.1089, 9.8463, 1.1091



1.5095, 0.7767, 0.1342

Inverse Universe

The Inverse Universe completely reimagines the original color for something new.



69.4408, 69.0072, 71.9482



81.6855, 80.2595, 82.9006



68.5714, 73.2685, 89.1262



15.0908, 15.0642, 15.7635



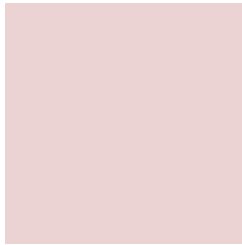
19.1089, 9.8463, 1.1091



1.5095, 0.7767, 0.1342

Previews

White Background



This preview shows how the XYZ color 69.4389, 69.0042, 71.9467 looks on a white background.

Color Contrast Check

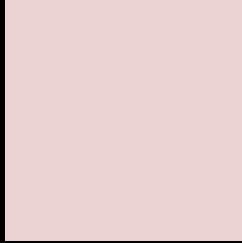
Large Text (above 18pt) WCAG AA × Fail

Any Text WCAG AA × Fail

Large Text (above 18pt) WCAG AAA × Fail

Any Text WCAG AAA × Fail

Black Background



This preview shows how the XYZ color 69.4389, 69.0042, 71.9467 looks on a black background.

Color Contrast Check

Large Text (above 18pt) WCAG AA ✓ Pass

Any Text WCAG AA ✓ Pass

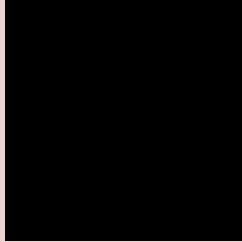
Large Text (above 18pt) WCAG AAA ✓ Pass

Any Text WCAG AAA ✓ Pass

If you want to check with other color combinations, try the [Color Contrast Checker](#).

XYZ 69.4389, 69.0042, 71.9467

Background



This preview shows how black text looks on a background with the XYZ color 69.4389, 69.0042, 71.9467.



This preview shows how white text looks on a background with the XYZ color 69.4389, 69.0042,

Color Blindness Simulation

Color vision deficiency is a very complex topic, and I could not describe the different causes any better than Wikipedia does, so if you want to learn more, you should check out their [article about color blindness](#).

Dichromacy



Original Color

69.4389, 69.0042, 71.9467

Protanopia

66.6404, 69.3902, 74.1713

Deuteranopia

70.5269, 69.1974, 71.9266



Tritanopia

71.3161, 69.0417, 80.8018

Trichromacy



Original Color

69.4389, 69.0042, 71.9467

Protanomaly

67.5482, 69.1169, 73.3991

Deuteranomaly

70.1902, 69.0238, 71.9109

Tritanomaly

70.5569, 69.0934, 77.3277

Monochromacy



Original Color

69.4389, 69.0042, 71.9467

Achromatopsia

66.6397, 70.1102, 76.3500

Achromatomaly

67.4356, 69.4060, 74.8082

CSS Examples

Text

The CSS property to change the color of the text to XYZ 69.4389, 69.0042, 71.9467 is called "color". The color property can be set on classes, ids or directly on the HTML element.

This example shows how text in the color rgb(235, 211, 212) looks like.

```
.text, #text, p{  
    color:rgb(235, 211, 212)  
}
```

If you want to add a text shadow in that color use the text-shadow property, you can generate a text shadow directly with our [CSS Text Shadow Generator](#).

Here you see how black text with a 4 pixel rgb(235, 211, 212) colored shadow looks like.

```
.shadow{ text-shadow: 4px 4px 2px rgb(235, 211, 212) }
```

Border

The CSS property to change the border of an element to XYZ 69.4389, 69.0042, 71.9467 is called "border". The border property can be set on classes, ids or directly on the HTML element.

This example shows the color as border, it can be applied via the CSS property "border" or "border-color".

```
.border, #border, table{ border:4px solid rgb(235, 211, 212) }
```


If only the border color should be changed use the property `border-color`.

```
.border{ border-color:rgb(235, 211, 212) }
```

If you want to add a box shadow in that color use:

Here you see how a box with a 4 pixel `rgb(235, 211, 212)` colored shadow looks like.

```
.boxshadow{ -moz-box-shadow:4px 4px 4px  
4px rgb(235, 211, 212); -webkit-box-  
shadow:4px 4px 4px 4px rgb(235, 211, 212);  
box-shadow:4px 4px 4px 4px rgb(235, 211,  
212) }
```

Background

The CSS property to change the background color of an element to XYZ 69.4389, 69.0042, 71.9467 is called "background". The background property can be set on classes, ids or directly on the HTML element.

```
.background, #background, body{  
background: rgb(235, 211, 212) }
```

If only the background color should be changed can be used:

```
.background{ background-color: rgb(235,  
211, 212) }
```

This example shows the color as background, it is applied via the CSS property "background".

To optimize and compress your CSS code, you can use our [online CSS compressor and optimizer](#) based on csstidy. If you want to create a linear or radial gradient as background or border, check our [CSS Gradient Generator](#).

Hey! You found this booklet interesting? Support Converting Colors with the new Membership Option!

The pro membership hides all ads, plus gives you double the colors in the color bucket, and more awesome pro features!

[Learn more, Memberships starting at \\$2.50/m!](#)

**Follow me
on Twitter!**

@ConvertingColor