

Converting Colors

XYZ(69.4155, 68.7332, 73.7209)

Have a look what the booklet for
XYZ(69.4155, 68.7332, 73.7209)
contains.

XYZ(69.2440, 68.4919, 73.8607)	3
<i>Conversions</i>	4
<i>Details</i>	6
<i>Harmonies</i>	12
<i>Previews</i>	24
<i>Color Blindness Simulation</i>	28
<i>CSS Examples</i>	31

Color

**XYZ(69.2440, 68.4919,
73.8607)**

Conversions

Conversions Part 1

Format	Color
Hex	EAD2D7
RGB	234, 210, 215
RGB Percent	92%, 82%, 84%
CMY	0.0823, 0.1764, 0.1569
CMYK	0.00, 0.10, 0.08, 0.08
HSL	348°, 36%, 87%
HSV	348°, 10%, 92%
XYZ	69.2440, 68.4919, 73.8607
YIQ	217.7460, 12.6990, 6.6430

Conversions

Conversions Part 2

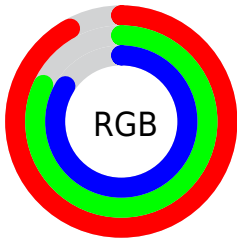
Format	Color
R_{YB}	234, 210, 215
Decimal	15389399
CIE Lab	86.25, 9.16, 0.57
CIE LCh	86, 9.179, 3.532
Yxy	68.4919, 0.3272, 0.3237
Android (android.graphics.Color)	4293579479 (0xFFEAD2D7)
YUV	217.7460, -1.3538, 14.2548
Hunter-Lab	82.7598, 4.5188, 5.0173

Details

The XYZ color **69.2440, 68.4919, 73.8607** is a light color, and the websafe version is hex **CCCCCC**. A complement of this color would be **70.1466, 78.2061, 85.5307**, and the grayscale version is **66.4701, 69.9318, 76.1557**.

A 20% lighter version of the original color is **95.0500, 100.0000, 108.9000**, and **36.5937, 35.7800, 38.2352** is the 20% darker color. If you saturate the color by 10%, you get **61.6365, 56.8732, 60.2365**, and if you desaturate by 10%, it is **77.9697, 81.9139, 89.1896**.

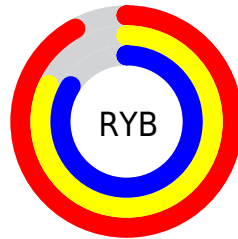
Distribution



Red (92%)

Green (82%)

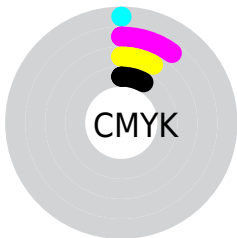
Blue (84%)



Red (92%)

Yellow (82%)

Blue (84%)

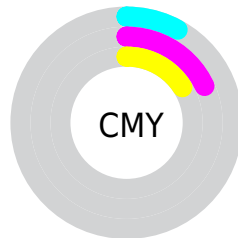


Cyan (0%)

Magenta (10%)

Yellow (8%)

Black (8%)



Cyan (8%)

Magenta (18%)

Yellow (16%)

Brightness & Saturation Gradients

These gradients show how the XYZ color 69.2440, 68.4919, 73.8607 changes by changing the brightness by 10 percent. The first figure shows a shift by +10% for each color and the second figure -10%.

Similar to the brightness gradients but the following saturation gradients show a change of the XYZ color 69.2440, 68.4919, 73.8607 by changing the saturation by 10% instead.

69.2440, 68.4919,
73.8607

69.2440, 68.4919,
73.8607

447.1990,
455.2369, 493.1430

51.1878, 50.2980,
54.1839

117.1622,
117.0556, 126.4305

36.5797, 35.6503,
38.3546

147.7549,
148.1941, 160.1607

25.0545, 24.1642,
25.9540

183.2571,
184.4164, 199.4124

16.2466, 15.4555,
16.5638

224.0343,
226.1068, 244.6042

9.7908, 9.1397,
9.7653

270.4517,
273.6496, 296.1546

5.3216, 4.8324,
5.1401

322.8747,

2.4739, 2.1493,

327.4293, 354.4822

2.2695

381.6687,
387.8302, 420.0055

■ 0.8821, 0.6921,
0.7141

■ 0.0000, 0.0000,
0.0000

■ 69.2440, 68.4919,
73.8607

■ 69.2440, 68.4919,
73.8607

■ 61.6365, 56.8732,
60.2365

■ 77.9697, 81.9139,
89.1896

■ 55.0961, 46.9721,
48.2533

■ 87.2719, 96.0445,
106.0822

■ 49.5759, 38.7096,
37.8497

■ 87.7420, 96.2326,
108.5580

■ 45.0237, 31.9968,
28.9590

■ 41.3821, 26.7363,
21.5093

■ 38.5877, 22.8197,
15.4230

■ 36.5689, 20.1234,
10.6147

■ 35.2410, 18.5002,
6.9886

■ 34.4805, 17.7120,
4.4762

Harmonies

Analogous

The Analogous color harmony consists of three colors that are next to each other on the color wheel.



68.8087, 68.4919, 79.8891



69.2440, 68.4919, 73.8607



68.5491, 68.4919, 68.3247

Triad

The Triadic color harmony groups three colors that are evenly spaced from another and form a triangle on the color wheel.



69.2440, 68.4919, 73.8607



62.8785, 68.4919, 65.2816



63.3035, 68.4919, 85.4970

Complementary

The Complementary color scheme is a pair of colors which are on the opposite of each other on the color wheel.



69.2440, 68.4919, 73.8607



70.1466, 78.2061, 85.5307

Split Complementary

Split-complementary colors differ from the complementary color scheme. The scheme consists of three colors, the original color and two neighbors of the complement color.



61.7676, 68.4919, 81.1975



69.2440, 68.4919, 73.8607



61.5260, 68.4919, 69.5040

Square

The Square scheme is like the rectangle color scheme, but the four colors are evenly spaced on the color wheel.



69.2440, 68.4919, 73.8607



64.8492, 68.4919, 63.5435



61.1238, 68.4919, 75.2960



65.3504, 68.4919, 86.8169

Rectangle

The Rectangle color scheme consists of four colors that form a rectangle on the color wheel.



69.2440, 68.4919, 73.8607



67.5470, 68.4919, 65.5953



61.1238, 68.4919, 75.2960



62.7118, 68.4919, 84.3412

Sweetspot

The Sweet Spot groups the original color and five complimentary colors.



69.2459, 68.4949, 73.8622



91.6979, 94.8318, 103.0471



70.1494, 68.6620, 87.3985



19.4399, 20.0097, 21.7285



0.0000, 0.0000, 0.0000



20.3446, 21.4041, 23.3091

Same Dimension

The Same Dimension uses a secret algorithm to generate beautiful new colors.



69.2459, 68.4949, 73.8622



82.3948, 80.5432, 86.6355



70.3280, 71.6709, 71.1036



15.1938, 15.1054, 16.3056



19.4127, 9.9678, 2.7088



1.5586, 0.7964, 0.3927

Inverse Universe

The Inverse Universe completely reimagines the original color for something new.



69.2459, 68.4949, 73.8622



82.3948, 80.5432, 86.6355



68.9558, 74.6919, 88.6253



15.1938, 15.1054, 16.3056



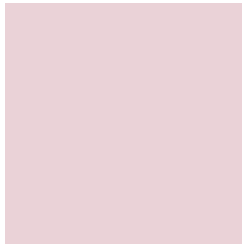
19.4127, 9.9678, 2.7088



1.5586, 0.7964, 0.3927

Previews

White Background



This preview shows how the XYZ color 69.2440, 68.4919, 73.8607 looks on a white background.

Color Contrast Check

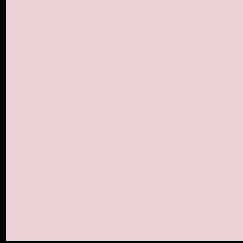
Large Text (above 18pt) WCAG AA × Fail

Any Text WCAG AA × Fail

Large Text (above 18pt) WCAG AAA × Fail

Any Text WCAG AAA × Fail

Black Background



This preview shows how the XYZ color 69.2440, 68.4919, 73.8607 looks on a black background.

Color Contrast Check

Large Text (above 18pt) WCAG AA ✓ Pass

Any Text WCAG AA ✓ Pass

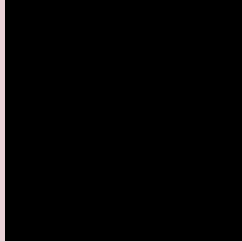
Large Text (above 18pt) WCAG AAA ✓ Pass

Any Text WCAG AAA ✓ Pass

If you want to check with other color combinations, try the [Color Contrast Checker](#).

XYZ 69.2440, 68.4919, 73.8607

Background



This preview shows how black text looks on a background with the XYZ color 69.2440, 68.4919, 73.8607.

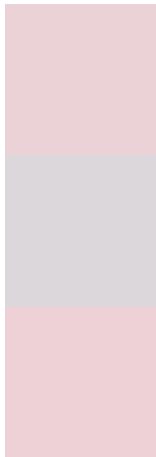


This preview shows how white text looks on a background with the XYZ color 69.2440, 68.4919,

Color Blindness Simulation

Color vision deficiency is a very complex topic, and I could not describe the different causes any better than Wikipedia does, so if you want to learn more, you should check out their [article about color blindness](#).

Dichromacy



Original Color

69.2440, 68.4919, 73.8607

Protanopia

66.1687, 68.7229, 76.1070

Deuteranopia

69.9913, 68.5117, 73.8251



Tritanopia

70.4074, 68.2102, 80.6892

Trichromacy



Original Color

69.2440, 68.4919, 73.8607

Protanomaly

67.0591, 68.4455, 75.3226

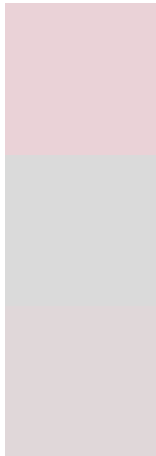
Deuteranomaly

69.6583, 68.3401, 73.8095

Tritanomaly

70.1126, 68.4836, 77.9299

Monochromacy



Original Color

69.2440, 68.4919, 73.8607

Achromatopsia

66.6397, 70.1102, 76.3500

Achromatomaly

67.5653, 69.4579, 75.4913

CSS Examples

Text

The CSS property to change the color of the text to XYZ 69.2440, 68.4919, 73.8607 is called "color". The color property can be set on classes, ids or directly on the HTML element.

This example shows how text in the color `rgb(234, 210, 215)` looks like.

```
.text, #text, p{  
    color:rgb(234, 210, 215)  
}
```

If you want to add a text shadow in that color use the text-shadow property, you can generate a text shadow directly with our [CSS Text Shadow Generator](#).

Here you see how black text with a 4 pixel rgb(234, 210, 215) colored shadow looks like.

```
.shadow{ text-shadow: 4px 4px 2px rgb(234, 210, 215) }
```

Border

The CSS property to change the border of an element to XYZ 69.2440, 68.4919, 73.8607 is called "border". The border property can be set on classes, ids or directly on the HTML element.

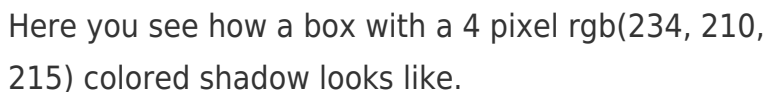
This example shows the color as border, it can be applied via the CSS property "border" or "border-color".

```
.border, #border, table{ border:4px solid rgb(234, 210, 215) }
```


If only the border color should be changed use the property `border-color`.

```
.border{ border-color:rgb(234, 210, 215) }
```

If you want to add a box shadow in that color use:



Here you see how a box with a 4 pixel `rgb(234, 210, 215)` colored shadow looks like.

```
.boxshadow{ -moz-box-shadow:4px 4px 4px 4px rgb(234, 210, 215); -webkit-box-shadow:4px 4px 4px 4px rgb(234, 210, 215); box-shadow:4px 4px 4px 4px rgb(234, 210, 215) }
```

Background

The CSS property to change the background color of an element to XYZ 69.2440, 68.4919, 73.8607 is called "background". The background property can be set on classes, ids or directly on the HTML element.

```
.background, #background, body{  
background: rgb(234, 210, 215) }
```

If only the background color should be changed can be used:

```
.background{ background-color: rgb(234,  
210, 215) }
```

This example shows the color as background, it is applied via the CSS property "background".

To optimize and compress your CSS code, you can use our [online CSS compressor and optimizer](#) based on csstidy. If you want to create a linear or radial gradient as background or border, check our [CSS Gradient Generator](#).

Hey! You found this booklet interesting? Support Converting Colors with the new Membership Option!

The pro membership hides all ads, plus gives you double the colors in the color bucket, and more awesome pro features!

[Learn more, Memberships starting at \\$2.50/m!](#)

**Follow me
on Twitter!**

@ConvertingColor