

# Converting Colors

XYZ(69.4242, 69.7943, 64.4717)

Have a look what the booklet for  
XYZ(69.4242, 69.7943, 64.4717)  
contains.

<b>XYZ(69.4795, 69.9358, 64.4806)</b> .....	3
<b><i>Conversions</i></b> .....	4
<b><i>Details</i></b> .....	6
<b><i>Harmonies</i></b> .....	12
<b><i>Previews</i></b> .....	24
<b><i>Color Blindness Simulation</i></b> .....	28
<b><i>CSS Examples</i></b> .....	31

# Color

**XYZ(69.4795, 69.9358,  
64.4806)**

# Conversions

## Conversions Part 1

Format	Color
Hex	EED5C8
RGB	238, 213, 200
RGB Percent	93%, 84%, 78%
CMY	0.0667, 0.1647, 0.2157
CMYK	0.00, 0.11, 0.16, 0.07
HSL	21°, 53%, 86%
HSV	21°, 16%, 93%
XYZ	69.4795, 69.9358, 64.4806
YIQ	218.9930, 19.0730, 1.2570

# Conversions

## Conversions Part 2

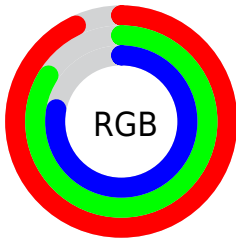
Format	Color
R <sub>Y</sub> B	238, 220, 200
Decimal	15652296
CIE Lab	86.97, 6.60, 9.57
CIE LCh	87, 11.626, 55.438
Yxy	69.9358, 0.3408, 0.3430
Android (android.graphics.Color)	4293842376 (0xFFEED5C8)
YUV	218.9930, -9.3635, 16.6691
Hunter-Lab	83.6276, 1.9530, 12.8241

# Details

The XYZ color **69.4795, 69.9358, 64.4806** is a light color, and the websafe version is hex **FFCCCC**. A complement of this color would be **66.1769, 72.3013, 91.3572**, and the grayscale version is **67.3824, 70.8915, 77.2008**.

A 20% lighter version of the original color is **95.0500, 100.0000, 108.9000**, and **36.7066, 36.4741, 32.2997** is the 20% darker color. If you saturate the color by 10%, you get **63.1626, 61.4118, 49.7036**, and if you desaturate by 10%, it is **76.6134, 79.3995, 81.6678**.

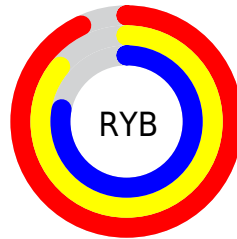
# Distribution



Red (93%)

Green (84%)

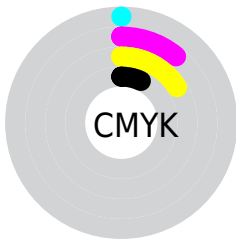
Blue (78%)



Red (93%)

Yellow (86%)

Blue (78%)

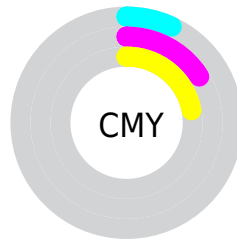


Cyan (0%)

Magenta (11%)

Yellow (16%)

Black (7%)



Cyan (7%)

Magenta (16%)

Yellow (22%)

# Brightness & Saturation Gradients

These gradients show how the XYZ color 69.4795, 69.9358, 64.4806 changes by changing the brightness by 10 percent. The first figure shows a shift by +10% for each color and the second figure -10%.

Similar to the brightness gradients but the following saturation gradients show a change of the XYZ color 69.4795, 69.9358, 64.4806 by changing the saturation by 10% instead.



69.4795, 69.9358,  
64.4806

69.4795, 69.9358,  
64.4806

448.0153,  
460.3246, 459.1781

51.3804, 51.4742,  
46.5914

117.4965,  
119.1172, 112.9089

36.7337, 36.5861,  
32.3607

148.1451,  
150.6058, 144.2851

25.1741, 24.8872,  
21.3701

183.7076,  
187.2055, 180.9939

16.3362, 15.9930,  
13.2009

224.5492,  
229.3007, 223.4541

9.8547, 9.5192,  
7.4347

271.0355,  
277.2758, 272.0840

5.3643, 5.0814,  
3.6529

323.5317,

2.4995, 2.2951,

331.5152, 327.3023

1.4369

382.4032,  
392.4033, 389.5275

■ 0.8950, 0.7711,  
0.1703

■ 0.0000, 0.0000,  
0.0000

■ 69.4795, 69.9358,  
64.4806

■ 69.4795, 69.9358,  
64.4806

■ 63.1626, 61.4118,  
49.7036

■ 76.6134, 79.3995,  
81.6678

■ 57.6263, 53.7888,  
37.2235

■ 84.5876, 89.8217,  
101.3624

■ 52.8397, 47.0388,  
26.9247

■ 89.0702, 96.9173,  
108.6201

■ 48.7677, 41.1290,  
18.6795

■ 45.3718, 36.0241,  
12.3468

■ 42.6095, 31.6862,  
7.7675

■ 40.4324, 28.0736,  
4.7562

■ 38.7832, 25.1392,  
3.0840

■ 38.2361, 24.1292,  
2.6421

# Harmonies

## Analogous

The Analogous color harmony consists of three colors that are next to each other on the color wheel.



71.3016, 69.9358, 69.9012



69.4795, 69.9358, 64.4806



66.8882, 69.9358, 62.1876

# Triad

The Triadic color harmony groups three colors that are evenly spaced from another and form a triangle on the color wheel.



69.4795, 69.9358, 64.4806



61.3995, 69.9358, 74.9646



68.7410, 69.9358, 90.4728

# Complementary

The Complementary color scheme is a pair of colors which are on the opposite of each other on the color wheel.



69.4795, 69.9358, 64.4806



66.1769, 72.3013, 91.3572

# Split Complementary

Split-complementary colors differ from the complementary color scheme. The scheme consists of three colors, the original color and two neighbors of the complement color.



66.0573, 69.9358, 92.0558



69.4795, 69.9358, 64.4806



61.8653, 69.9358, 82.7567

# Square

The Square scheme is like the rectangle color scheme, but the four colors are evenly spaced on the color wheel.



69.4795, 69.9358, 64.4806



62.2622, 69.9358, 67.9727



63.5523, 69.9358, 89.1446



70.8672, 69.9358, 84.9543



# Rectangle

The Rectangle color scheme consists of four colors that form a rectangle on the color wheel.



69.4795, 69.9358, 64.4806



65.0910, 69.9358, 62.6188



63.5523, 69.9358, 89.1446



67.8722, 69.9358, 91.4981

# Sweetspot

The Sweet Spot groups the original color and five complimentary colors.



69.4814, 69.9389, 64.4821



90.4472, 93.9711, 97.5726



69.5511, 64.9411, 80.3427



19.2253, 19.9372, 20.5566



0.0000, 0.0000, 0.0000



20.3446, 21.4041, 23.3091

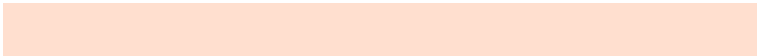


# Same Dimension

The Same Dimension uses a secret algorithm to generate beautiful new colors.



69.4814, 69.9389, 64.4821



78.8701, 78.5882, 69.7556



74.4488, 79.8738, 66.1379



16.2150, 16.6431, 16.5075



21.4397, 13.6775, 1.5100



1.8727, 1.3161, 0.1553

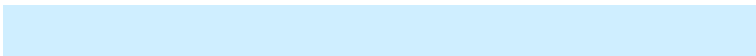


# Inverse Universe

The Inverse Universe completely reimagines the original color for something new.



66.1769, 72.3013, 91.3572



74.3533, 81.8142, 106.4806



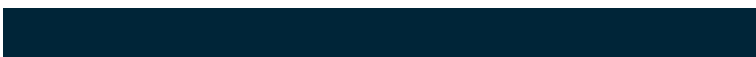
61.4046, 62.7567, 89.7664



15.7654, 16.9650, 20.1652



15.4190, 17.0623, 47.6086

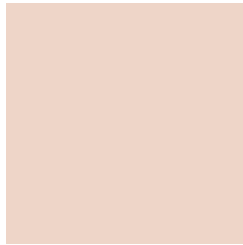


1.3748, 1.6035, 3.9913



# Previews

## White Background



This preview shows how the XYZ color 69.4795, 69.9358, 64.4806 looks on a white background.

## Color Contrast Check

Large Text (above 18pt) WCAG AA × Fail

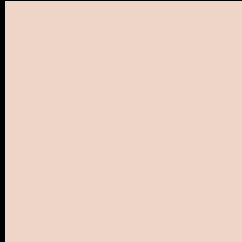
Any Text WCAG AA × Fail

Large Text (above 18pt) WCAG AAA × Fail

Any Text WCAG AAA × Fail



# Black Background



This preview shows how the XYZ color 69.4795, 69.9358, 64.4806 looks on a black background.

## Color Contrast Check

Large Text (above 18pt) WCAG AA ✓ Pass

Any Text WCAG AA ✓ Pass

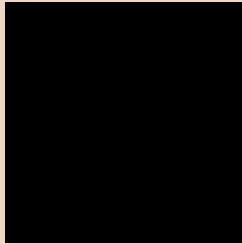
Large Text (above 18pt) WCAG AAA ✓ Pass

Any Text WCAG AAA ✓ Pass

If you want to check with other color combinations, try the [Color Contrast Checker](#).

**XYZ 69.4795, 69.9358, 64.4806**

## **Background**



This preview shows how black text looks on a background with the XYZ color 69.4795, 69.9358, 64.4806.



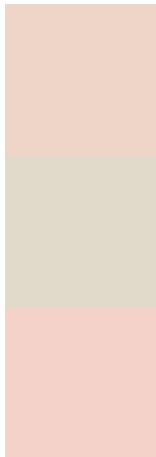
This preview shows how white text looks on a background with the XYZ color 69.4795, 69.9358,

64.4806.

# Color Blindness Simulation

Color vision deficiency is a very complex topic, and I could not describe the different causes any better than Wikipedia does, so if you want to learn more, you should check out their [article about color blindness](#).

## Dichromacy



### Original Color

69.4795, 69.9358, 64.4806

### Protanopia

66.5249, 69.8975, 65.8625

### Deuteranopia

71.2454, 69.7227, 64.9611



## **Tritanopia**

72.8036, 69.7927, 81.5857

# Trichromacy



## Original Color

69.4795, 69.9358, 64.4806

## Protanomaly

67.7316, 70.1518, 65.2291

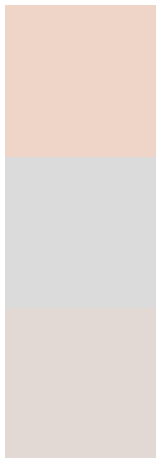
## Deuteranomaly

70.4548, 69.6828, 64.9951

## Tritanomaly

71.5062, 69.6282, 75.3164

# Monochromacy



## Original Color

69.4795, 69.9358, 64.4806

## Achromatopsia

67.3311, 70.8376, 77.1421

## Achromatomaly

68.0606, 70.5479, 72.3173

# CSS Examples

## Text

The CSS property to change the color of the text to XYZ 69.4795, 69.9358, 64.4806 is called "color". The color property can be set on classes, ids or directly on the HTML element.

This example shows how text in the color `rgb(238, 213, 200)` looks like.

```
.text, #text, p{  
    color:rgb(238, 213, 200)  
}
```

If you want to add a text shadow in that color use the text-shadow property, you can generate a text shadow directly with our [CSS Text Shadow Generator](#).

Here you see how black text with a 4 pixel rgb(238, 213, 200) colored shadow looks like.

```
.shadow{ text-shadow: 4px 4px 2px rgb(238, 213, 200) }
```

## Border

The CSS property to change the border of an element to XYZ 69.4795, 69.9358, 64.4806 is called "border". The border property can be set on classes, ids or directly on the HTML element.

This example shows the color as border, it can be applied via the CSS property "border" or "border-color".

```
.border, #border, table{ border:4px solid rgb(238, 213, 200) }
```



If only the border color should be changed use the property `border-color`.

```
.border{ border-color:rgb(238, 213, 200) }
```

If you want to add a box shadow in that color use:

Here you see how a box with a 4 pixel `rgb(238, 213, 200)` colored shadow looks like.

```
.boxshadow{ -moz-box-shadow:4px 4px 4px  
4px rgb(238, 213, 200); -webkit-box-  
shadow:4px 4px 4px 4px rgb(238, 213, 200);  
box-shadow:4px 4px 4px 4px rgb(238, 213,  
200) }
```

# Background

The CSS property to change the background color of an element to XYZ 69.4795, 69.9358, 64.4806 is called "background". The background property can be set on classes, ids or directly on the HTML element.

```
.background, #background, body{  
background: rgb(238, 213, 200) }
```

If only the background color should be changed can be used:

```
.background{ background-color: rgb(238,  
213, 200) }
```

This example shows the color as background, it is applied via the CSS property "background".

To optimize and compress your CSS code, you can use our [online CSS compressor and optimizer](#) based on csstidy. If you want to create a linear or radial gradient as background or border, check our [CSS Gradient Generator](#).

Hey! You found this booklet interesting? Support Converting Colors with the new Membership Option!

The pro membership hides all ads, plus gives you double the colors in the color bucket, and more awesome pro features!

**[Learn more, Memberships starting at \\$2.50/m!](#)**

**Follow me  
on Twitter!**

@ConvertingColor