

Converting Colors

XYZ(69.5563, 69.2508, 71.9165)

Have a look what the booklet for
XYZ(69.5563, 69.2508, 71.9165)
contains.

| | |
|--|----|
| XYZ(69.6881, 69.5026, 72.0297) | 3 |
| <i>Conversions</i> | 4 |
| <i>Details</i> | 6 |
| <i>Harmonies</i> | 12 |
| <i>Previews</i> | 24 |
| <i>Color Blindness Simulation</i> | 28 |
| <i>CSS Examples</i> | 31 |

Color

**XYZ(69.6881, 69.5026,
72.0297)**

Conversions

Conversions Part 1

| Format | Color |
|-------------|---------------------------|
| Hex | EBD4D4 |
| RGB | 235, 212, 212 |
| RGB Percent | 92%, 83%, 83% |
| CMY | 0.0784, 0.1686, 0.1686 |
| CMYK | 0.00, 0.10, 0.10, 0.08 |
| HSL | 0°, 37%, 88% |
| HSV | 0°, 10%, 92% |
| XYZ | 69.6881, 69.5026, 72.0297 |
| YIQ | 218.8770, 13.7080, 4.8760 |

Conversions

Conversions Part 2

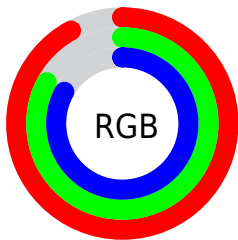
| Format | Color |
|-------------------------------------|-------------------------------|
| R _Y B | 235, 212, 212 |
| Decimal | 15455444 |
| CIE Lab | 86.75, 7.96, 2.89 |
| CIE LCh | 87, 8.473, 19.963 |
| Yxy | 69.5026, 0.3299, 0.3291 |
| Android (android.graphics.Color) | 4293645524 (0xFFEBD4D4) |
| YUV | 218.8770, -3.3904, 14.1399 |
| Hunter-Lab | 83.3682, 3.3151, 7.1315 |

Details

The XYZ color **69.6881, 69.5026, 72.0297** is a light color, and the websafe version is hex **CCCCCC**. A complement of this color would be **71.8548, 79.4104, 90.1387**, and the grayscale version is **67.2644, 70.7674, 77.0657**.

A 20% lighter version of the original color is **95.0500, 100.0000, 108.9000**, and **36.7332, 36.1320, 36.9364** is the 20% darker color. If you saturate the color by 10%, you get **61.4849, 57.4995, 55.7187**, and if you desaturate by 10%, it is **79.1814, 83.3938, 90.9010**.

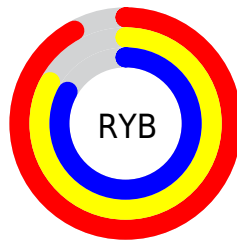
Distribution



Red (92%)

Green (83%)

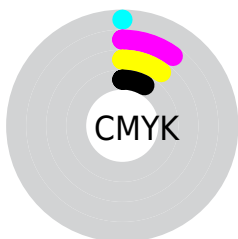
Blue (83%)



Red (92%)

Yellow (83%)

Blue (83%)

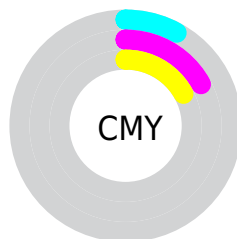


Cyan (0%)

Magenta (10%)

Yellow (10%)

Black (8%)



Cyan (8%)

Magenta (17%)

Yellow (17%)

Brightness & Saturation Gradients

These gradients show how the XYZ color 69.6881, 69.5026, 72.0297 changes by changing the brightness by 10 percent. The first figure shows a shift by +10% for each color and the second figure -10%.

Similar to the brightness gradients but the following saturation gradients show a change of the XYZ color 69.6881, 69.5026, 72.0297 by changing the saturation by 10% instead.

69.6881, 69.5026,
72.0297

69.6881, 69.5026,
72.0297

448.7376,
458.8016, 486.6253

51.5510, 51.1211,
52.6960

117.7926,
118.4992, 123.8069

36.8701, 36.3050,
37.1740

148.4906,
149.8830, 157.0874

25.2802, 24.6699,
25.0454

184.1063,
186.3698, 195.8539

16.4157, 15.8313,
15.8916

225.0051,
228.3440, 240.5249

9.9115, 9.4048,
9.2939

271.5522,
276.1898, 291.5190

5.4022, 5.0062,
4.8340

324.1131,

2.5223, 2.2509,

330.2918, 349.2548

2.0932

383.0532,
391.0342, 414.1507

■ 0.9065, 0.7475,
0.6117

■ 0.0000, 0.0000,
0.0000

■ 69.6881, 69.5026,
72.0297

■ 69.6881, 69.5026,
72.0297

■ 61.4849, 57.4995,
55.7187

■ 79.1814, 83.3938,
90.9010

■ 54.5106, 47.2943,
41.8536

■ 88.0713, 96.4024,
108.5734

■ 48.7079, 38.8033,
30.3178

■ 44.0124, 31.9325,
20.9837

■ 40.3539, 26.5789,
13.7113

■ 37.6538, 22.6277,
8.3444

■ 35.8226, 19.9477,
4.7048

■ 34.7536, 18.3832,
2.5808

■ 34.2699, 17.6752,
1.6198

Harmonies

Analogous

The Analogous color harmony consists of three colors that are next to each other on the color wheel.



69.8642, 69.5026, 77.5848



69.6881, 69.5026, 72.0297



68.5292, 69.5026, 67.6640

Triad

The Triadic color harmony groups three colors that are evenly spaced from another and form a triangle on the color wheel.



69.6881, 69.5026, 72.0297



63.1997, 69.5026, 68.9044



65.4016, 69.5026, 86.8798

Complementary

The Complementary color scheme is a pair of colors which are on the opposite of each other on the color wheel.



69.6881, 69.5026, 72.0297



71.8548, 79.4104, 90.1387

Split Complementary

Split-complementary colors differ from the complementary color scheme. The scheme consists of three colors, the original color and two neighbors of the complement color.



63.6511, 69.5026, 84.2978



69.6881, 69.5026, 72.0297



62.3967, 69.5026, 73.7998

Square

The Square scheme is like the rectangle color scheme, but the four colors are evenly spaced on the color wheel.



69.6881, 69.5026, 72.0297



64.7742, 69.5026, 65.9228



62.5603, 69.5026, 79.4444



67.3630, 69.5026, 86.3478

Rectangle

The Rectangle color scheme consists of four colors that form a rectangle on the color wheel.



69.6881, 69.5026, 72.0297



67.3677, 69.5026, 65.9272



62.5603, 69.5026, 79.4444



64.7696, 69.5026, 86.3425

Sweetspot

The Sweet Spot groups the original color and five complimentary colors.



69.6900, 69.5057, 72.0312



91.4509, 94.7337, 101.7446



72.8007, 70.7483, 88.4168



19.3736, 19.9833, 21.3786



0.0000, 0.0000, 0.0000



20.3446, 21.4041, 23.3091

Same Dimension

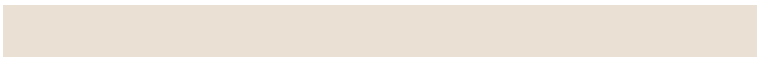
The Same Dimension uses a secret algorithm to generate beautiful new colors.



69.6900, 69.5057, 72.0312



81.5137, 80.1931, 81.9884



72.6670, 75.4595, 73.0235



15.0658, 15.0545, 15.6305



19.0681, 9.8305, 0.8925



1.4974, 0.7721, 0.0701

Inverse Universe

The Inverse Universe completely reimagines the original color for something new.



71.8548, 79.4104, 90.1387



84.6728, 94.6477, 108.4138



68.6692, 73.0391, 89.0768



15.5175, 17.1214, 19.4092



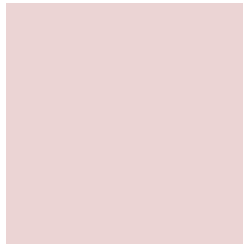
24.8730, 36.3930, 49.4566



1.9532, 2.8579, 3.8836

Previews

White Background



This preview shows how the XYZ color 69.6881, 69.5026, 72.0297 looks on a white background.

Color Contrast Check

Large Text (above 18pt) WCAG AA × Fail

Any Text WCAG AA × Fail

Large Text (above 18pt) WCAG AAA × Fail

Any Text WCAG AAA × Fail

Black Background



This preview shows how the XYZ color 69.6881, 69.5026, 72.0297 looks on a black background.

Color Contrast Check

Large Text (above 18pt) WCAG AA ✓ Pass

Any Text WCAG AA ✓ Pass

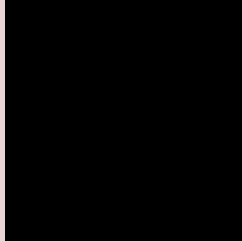
Large Text (above 18pt) WCAG AAA ✓ Pass

Any Text WCAG AAA ✓ Pass

If you want to check with other color combinations, try the [Color Contrast Checker](#).

XYZ 69.6881, 69.5026, 72.0297

Background



This preview shows how black text looks on a background with the XYZ color 69.6881, 69.5026, 72.0297.

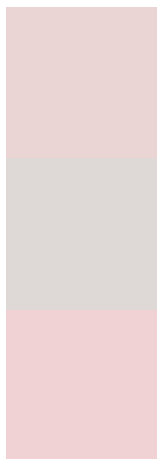


This preview shows how white text looks on a background with the XYZ color 69.6881, 69.5026,

Color Blindness Simulation

Color vision deficiency is a very complex topic, and I could not describe the different causes any better than Wikipedia does, so if you want to learn more, you should check out their [article about color blindness](#).

Dichromacy



Original Color

69.6881, 69.5026, 72.0297

Protanopia

66.8177, 69.4964, 73.5108

Deuteranopia

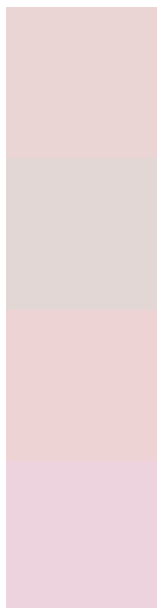
70.8654, 69.3719, 71.9425



Tritanopia

71.6991, 69.5887, 81.6045

Trichromacy



Original Color

69.6881, 69.5026, 72.0297

Protanomaly

67.9892, 69.7359, 72.8277

Deuteranomaly

70.4378, 69.5191, 71.9934

Tritanomaly

70.9375, 69.6419, 78.1100

Monochromacy



Original Color

69.6881, 69.5026, 72.0297

Achromatopsia

67.3311, 70.8376, 77.1421

Achromatomaly

68.0019, 70.0772, 74.9079

CSS Examples

Text

The CSS property to change the color of the text to XYZ 69.6881, 69.5026, 72.0297 is called "color". The color property can be set on classes, ids or directly on the HTML element.

This example shows how text in the color rgb(235, 212, 212) looks like.

```
.text, #text, p{  
    color:rgb(235, 212, 212)  
}
```

If you want to add a text shadow in that color use the text-shadow property, you can generate a text shadow directly with our [CSS Text Shadow Generator](#).

Here you see how black text with a 4 pixel rgb(235, 212, 212) colored shadow looks like.

```
.shadow{ text-shadow: 4px 4px 2px rgb(235, 212, 212) }
```

Border

The CSS property to change the border of an element to XYZ 69.6881, 69.5026, 72.0297 is called "border". The border property can be set on classes, ids or directly on the HTML element.

This example shows the color as border, it can be applied via the CSS property "border" or "border-color".

```
.border, #border, table{ border:4px solid rgb(235, 212, 212) }
```


If only the border color should be changed use the property `border-color`.

```
.border{ border-color:rgb(235, 212, 212) }
```

If you want to add a box shadow in that color use:

Here you see how a box with a 4 pixel `rgb(235, 212, 212)` colored shadow looks like.

```
.boxshadow{ -moz-box-shadow:4px 4px 4px  
4px rgb(235, 212, 212); -webkit-box-  
shadow:4px 4px 4px 4px rgb(235, 212, 212);  
box-shadow:4px 4px 4px 4px rgb(235, 212,  
212) }
```

Background

The CSS property to change the background color of an element to XYZ 69.6881, 69.5026, 72.0297 is called "background". The background property can be set on classes, ids or directly on the HTML element.

```
.background, #background, body{  
background: rgb(235, 212, 212) }
```

If only the background color should be changed can be used:

```
.background{ background-color: rgb(235,  
212, 212) }
```

This example shows the color as background, it is applied via the CSS property "background".

To optimize and compress your CSS code, you can use our [online CSS compressor and optimizer](#) based on csstidy. If you want to create a linear or radial gradient as background or border, check our [CSS Gradient Generator](#).

Hey! You found this booklet interesting? Support Converting Colors with the new Membership Option!

The pro membership hides all ads, plus gives you double the colors in the color bucket, and more awesome pro features!

[Learn more, Memberships starting at \\$2.50/m!](#)

**Follow me
on Twitter!**

@ConvertingColor