

# Converting Colors

XYZ(69.6882, 69.1709, 61.7163)

Have a look what the booklet for  
XYZ(69.6882, 69.1709, 61.7163)  
contains.

<b>XYZ(69.6283, 68.9560, 61.8646)</b> .....	3
<b><i>Conversions</i></b> .....	4
<b><i>Details</i></b> .....	6
<b><i>Harmonies</i></b> .....	12
<b><i>Previews</i></b> .....	24
<b><i>Color Blindness Simulation</i></b> .....	28
<b><i>CSS Examples</i></b> .....	31

# Color

**XYZ(69.6283, 68.9560,  
61.8646)**

# Conversions

## Conversions Part 1

Format	Color
Hex	F2D2C4
RGB	242, 210, 196
RGB Percent	95%, 82%, 77%
CMY	0.0510, 0.1764, 0.2314
CMYK	0.00, 0.13, 0.19, 0.05
HSL	18°, 64%, 86%
HSV	18°, 19%, 95%
XYZ	69.6283, 68.9560, 61.8646
YIQ	217.9720, 23.5660, 2.4300

# Conversions

## Conversions Part 2

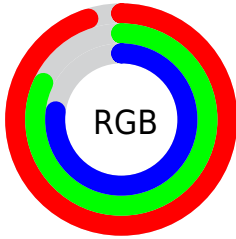
<b>Format</b>	<b>Color</b>
R <sub>Y</sub> B	242, 216, 196
Decimal	15913668
CIE Lab	86.48, 9.00, 11.04
CIE LCh	86, 14.246, 50.826
Yxy	68.9560, 0.3474, 0.3440
Android (android.graphics.Color)	4294103748 (0xFFF2D2C4)
YUV	217.9720, -10.8322, 21.0726
Hunter-Lab	83.0397, 4.3515, 13.9568

# Details

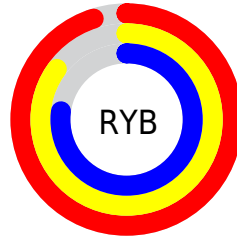
The XYZ color **69.6283, 68.9560, 61.8646** is a light color, and the websafe version is hex **FFCCCC**. A complement of this color would be **66.5347, 73.6313, 94.7102**, and the grayscale version is **66.6838, 70.1565, 76.4005**.

A 20% lighter version of the original color is **94.7296, 99.8718, 107.2129**, and **36.7785, 36.0442, 30.6100** is the 20% darker color. If you saturate the color by 10%, you get **63.1538, 60.0651, 47.1950**, and if you desaturate by 10%, it is **76.9880, 78.9051, 79.0228**.

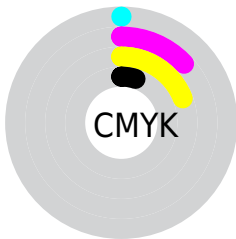
# Distribution



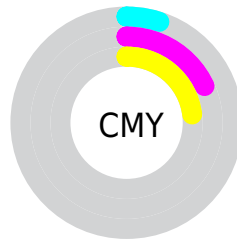
- Red (95%)
- Green (82%)
- Blue (77%)



- Red (95%)
- Yellow (85%)
- Blue (77%)



- Cyan (0%)
- Magenta (13%)
- Yellow (19%)
- Black (5%)



- Cyan (5%)
- Magenta (18%)
- Yellow (23%)

# Brightness & Saturation Gradients

These gradients show how the XYZ color 69.6283, 68.9560, 61.8646 changes by changing the brightness by 10 percent. The first figure shows a shift by +10% for each color and the second figure -10%.

Similar to the brightness gradients but the following saturation gradients show a change of the XYZ color 69.6283, 68.9560, 61.8646 by changing the saturation by 10% instead.



69.6283, 68.9560,  
61.8646

69.6283, 68.9560,  
61.8646

448.5306,  
456.8758, 449.4310

51.5021, 50.6759,  
44.4882

117.7077,  
117.7187, 109.0995

36.8310, 35.9507,  
30.7145

148.3916,  
148.9701, 139.7951

25.2497, 24.3961,  
20.1249

183.9920,  
185.3141, 175.7676

16.3929, 15.6277,  
12.3009

224.8744,  
227.1349, 217.4354

9.8952, 9.2611,  
6.8239

271.4041,  
274.8172, 265.2171

5.3913, 4.9119,  
3.2755

323.9465,

2.5157, 2.1957,

328.7451, 319.5312

1.2369

382.8669,  
389.3032, 380.7964

■ 0.9032, 0.7176,  
0.0093

■ 0.0000, 0.0000,  
0.0000

■ 69.6283, 68.9560,  
61.8646

■ 69.6283, 68.9560,  
61.8646

■ 63.1538, 60.0651,  
47.1950

■ 76.9880, 78.9051,  
79.0228

■ 57.5243, 52.1876,  
34.8933

■ 85.2599, 89.9367,  
98.7739

■ 52.7043, 45.2893,  
24.8348

■ 90.4281, 97.6173,  
108.6837

■ 48.6539, 39.3301,  
16.8821

■ 45.3292, 34.2674,  
10.8820

■ 42.6812, 30.0546,  
6.6606

■ 40.6541, 26.6402,  
4.0123

■ 39.1710, 23.9621,  
2.6296

■ 39.0454, 23.7320,  
2.5228

# Harmonies

## Analogous

The Analogous color harmony consists of three colors that are next to each other on the color wheel.



71.6478, 68.9560, 68.8082



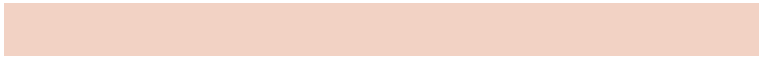
69.6283, 68.9560, 61.8646



66.5568, 68.9560, 58.5425

# Triad

The Triadic color harmony groups three colors that are evenly spaced from another and form a triangle on the color wheel.



69.6283, 68.9560, 61.8646



59.4779, 68.9560, 72.2229



67.8210, 68.9560, 93.3664

# Complementary

The Complementary color scheme is a pair of colors which are on the opposite of each other on the color wheel.



69.6283, 68.9560, 61.8646



66.5347, 73.6313, 94.7102

# Split Complementary

Split-complementary colors differ from the complementary color scheme. The scheme consists of three colors, the original color and two neighbors of the complement color.



64.5348, 68.9560, 94.4742



69.6283, 68.9560, 61.8646



59.7907, 68.9560, 81.7246

# Square

The Square scheme is like the rectangle color scheme, but the four colors are evenly spaced on the color wheel.



69.6283, 68.9560, 61.8646



60.7467, 68.9560, 64.1841



61.6161, 68.9560, 90.0580



70.5803, 68.9560, 87.1471



# Rectangle

The Rectangle color scheme consists of four colors that form a rectangle on the color wheel.



69.6283, 68.9560, 61.8646



64.3568, 68.9560, 58.6195



61.6161, 68.9560, 90.0580



66.7388, 68.9560, 94.3683

# Sweetspot

The Sweet Spot groups the original color and five complimentary colors.



69.6302, 68.9591, 61.8660



89.3822, 92.4506, 95.3384



70.3898, 63.9705, 82.1826



19.0043, 19.6181, 20.1043



0.0000, 0.0000, 0.0000



20.3446, 21.4041, 23.3091



# Same Dimension

The Same Dimension uses a secret algorithm to generate beautiful new colors.



69.6302, 68.9591, 61.8660



75.3425, 73.4591, 62.6417



75.6646, 81.0279, 63.8775



16.1652, 16.5435, 16.4909



21.0807, 12.9595, 1.3904



1.8382, 1.2470, 0.1438



# Inverse Universe

The Inverse Universe completely reimagines the original color for something new.



66.5347, 73.6313, 94.7102



71.2319, 79.6544, 106.2283



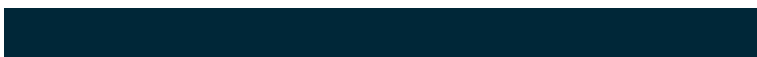
60.6720, 61.9058, 92.7560



15.8176, 17.0693, 20.1826



16.2902, 18.8047, 47.8990

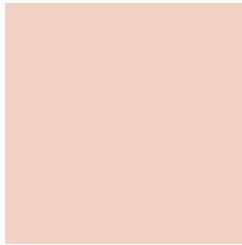


1.4424, 1.7389, 4.0138



# Previews

## White Background



This preview shows how the XYZ color 69.6283, 68.9560, 61.8646 looks on a white background.

## Color Contrast Check

Large Text (above 18pt) WCAG AA × Fail

Any Text WCAG AA × Fail

Large Text (above 18pt) WCAG AAA × Fail

Any Text WCAG AAA × Fail



# Black Background



This preview shows how the XYZ color 69.6283, 68.9560, 61.8646 looks on a black background.

## Color Contrast Check

Large Text (above 18pt) WCAG AA ✓ Pass

Any Text WCAG AA ✓ Pass

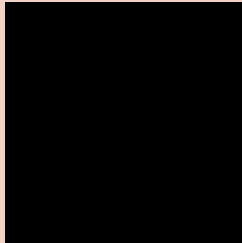
Large Text (above 18pt) WCAG AAA ✓ Pass

Any Text WCAG AAA ✓ Pass

If you want to check with other color combinations, try the [Color Contrast Checker](#).

**XYZ 69.6283, 68.9560, 61.8646**

## **Background**



This preview shows how black text looks on a background with the XYZ color 69.6283, 68.9560, 61.8646.



This preview shows how white text looks on a background with the XYZ color 69.6283, 68.9560,

61.8646.

# Color Blindness Simulation

Color vision deficiency is a very complex topic, and I could not describe the different causes any better than Wikipedia does, so if you want to learn more, you should check out their [article about color blindness](#).

## Dichromacy



### Original Color

69.6283, 68.9560, 61.8646

### Protanopia

65.9160, 69.2428, 63.9239

### Deuteranopia

70.4205, 68.9989, 61.8311



## Tritanopia

72.9123, 68.8290, 78.5497

# Trichromacy



## Original Color

69.6283, 68.9560, 61.8646

## Protanomaly

67.1946, 69.1593, 63.2336

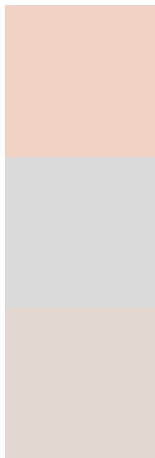
## Deuteranomaly

70.0725, 68.8195, 61.8148

## Tritanomaly

71.6313, 68.6628, 72.4287

# Monochromacy



## Original Color

69.6283, 68.9560, 61.8646

## Achromatopsia

66.6397, 70.1102, 76.3500

## Achromatomaly

67.6119, 69.5849, 70.8405

# CSS Examples

## Text

The CSS property to change the color of the text to XYZ 69.6283, 68.9560, 61.8646 is called "color". The color property can be set on classes, ids or directly on the HTML element.

This example shows how text in the color `rgb(242, 210, 196)` looks like.

```
.text, #text, p{  
    color:rgb(242, 210, 196)  
}
```

If you want to add a text shadow in that color use the text-shadow property, you can generate a text shadow directly with our [CSS Text Shadow Generator](#).

Here you see how black text with a 4 pixel rgb(242, 210, 196) colored shadow looks like.

```
.shadow{ text-shadow: 4px 4px 2px rgb(242, 210, 196) }
```

## Border

The CSS property to change the border of an element to XYZ 69.6283, 68.9560, 61.8646 is called "border". The border property can be set on classes, ids or directly on the HTML element.

This example shows the color as border, it can be applied via the CSS property "border" or "border-color".

```
.border, #border, table{ border:4px solid rgb(242, 210, 196) }
```



If only the border color should be changed use the property `border-color`.

```
.border{ border-color:rgb(242, 210, 196) }
```

If you want to add a box shadow in that color use:

Here you see how a box with a 4 pixel `rgb(242, 210, 196)` colored shadow looks like.

```
.boxshadow{ -moz-box-shadow:4px 4px 4px  
4px rgb(242, 210, 196); -webkit-box-  
shadow:4px 4px 4px 4px rgb(242, 210, 196);  
box-shadow:4px 4px 4px 4px rgb(242, 210,  
196) }
```

# Background

The CSS property to change the background color of an element to XYZ 69.6283, 68.9560, 61.8646 is called "background". The background property can be set on classes, ids or directly on the HTML element.

```
.background, #background, body{  
background: rgb(242, 210, 196) }
```

If only the background color should be changed can be used:

```
.background{ background-color: rgb(242,  
210, 196) }
```

This example shows the color as background, it is applied via the CSS property "background".

To optimize and compress your CSS code, you can use our [online CSS compressor and optimizer](#) based on csstidy. If you want to create a linear or radial gradient as background or border, check our [CSS Gradient Generator](#).

Hey! You found this booklet interesting? Support Converting Colors with the new Membership Option!

The pro membership hides all ads, plus gives you double the colors in the color bucket, and more awesome pro features!

**[Learn more, Memberships starting at \\$2.50/m!](#)**

**Follow me  
on Twitter!**

@ConvertingColor