

Converting Colors

XYZ(69.7388, 70.0008, 67.5935)

Have a look what the booklet for
XYZ(69.7388, 70.0008, 67.5935)
contains.

XYZ(69.7387, 70.0008, 67.5935)	3
<i>Conversions</i>	4
<i>Details</i>	6
<i>Harmonies</i>	12
<i>Previews</i>	24
<i>Color Blindness Simulation</i>	28
<i>CSS Examples</i>	31

Color

**XYZ(69.7387, 70.0008,
67.5935)**

Conversions

Conversions Part 1

Format	Color
Hex	EDD5CD
RGB	237, 213, 205
RGB Percent	93%, 84%, 80%
CMY	0.0706, 0.1647, 0.1961
CMYK	0.00, 0.10, 0.14, 0.07
HSL	15°, 47%, 87%
HSV	15°, 14%, 93%
XYZ	69.7387, 70.0008, 67.5935
YIQ	219.2640, 16.8720, 2.6000

Conversions

Conversions Part 2

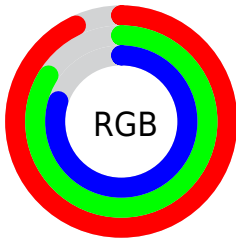
Format	Color
R_{YB}	237, 216, 205
Decimal	15586765
CIE _{Lab}	87.00, 7.02, 6.97
CIE _{LCh}	87, 9.890, 44.801
Yxy	70.0008, 0.3364, 0.3376
Android (android.graphics.Color)	4293776845 (0xFFEDD5CD)
YUV	219.2640, -7.0322, 15.5545
Hunter-Lab	83.6665, 2.3691, 10.6666

Details

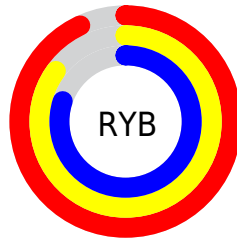
The XYZ color **69.7387, 70.0008, 67.5935** is a light color, and the websafe version is hex **FFCCCC**. A complement of this color would be **68.4818, 75.1305, 91.0136**, and the grayscale version is **67.5559, 71.0740, 77.3996**.

A 20% lighter version of the original color is **95.0500, 100.0000, 108.9000**, and **36.8688, 36.5118, 34.3824** is the 20% darker color. If you saturate the color by 10%, you get **62.8643, 60.4884, 52.2406**, and if you desaturate by 10%, it is **77.5402, 80.6725, 85.3951**.

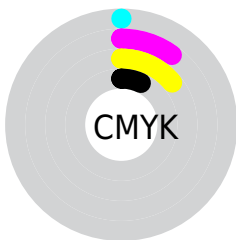
Distribution



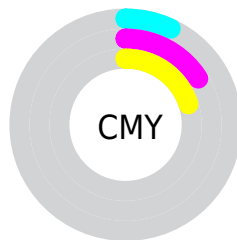
- Red (93%)
- Green (84%)
- Blue (80%)



- Red (93%)
- Yellow (85%)
- Blue (80%)



- Cyan (0%)
- Magenta (10%)
- Yellow (14%)
- Black (7%)



- Cyan (7%)
- Magenta (16%)
- Yellow (20%)

Brightness & Saturation Gradients

These gradients show how the XYZ color 69.7387, 70.0008, 67.5935 changes by changing the brightness by 10 percent. The first figure shows a shift by +10% for each color and the second figure -10%.

Similar to the brightness gradients but the following saturation gradients show a change of the XYZ color 69.7387, 70.0008, 67.5935 by changing the saturation by 10% instead.

69.7387, 70.0008,
67.5935

69.7387, 70.0008,
67.5935

448.9127,
460.5528, 470.6133

51.5924, 51.5272,
49.1025

117.8644,
119.2099, 117.4191

36.9032, 36.6283,
34.3346

148.5744,
150.7142, 149.5908

25.3059, 24.9199,
22.8713

184.2030,
187.3308, 187.1598

16.4350, 16.0174,
14.2941

225.1156,
229.4441, 230.5447

9.9253, 9.5364,
8.1844

271.6775,
277.4386, 280.1639

5.4114, 5.0927,
4.1237

324.2541,

2.5278, 2.3018,

331.6986, 336.4361

1.6935

383.2107,
392.6086, 399.7797

■ 0.9093, 0.7746,
0.3562

■ 0.0000, 0.0000,
0.0000

■ 69.7387, 70.0008,
67.5935

■ 69.7387, 70.0008,
67.5935

■ 62.8643, 60.4884,
52.2406

■ 77.5402, 80.6725,
85.3951

■ 56.8762, 52.0868,
39.2242

■ 86.2963, 92.5315,
105.7416

■ 51.7387, 44.7576,
28.4304

■ 88.7353, 96.7446,
108.6045

■ 47.4116, 38.4566,
19.7334

■ 43.8514, 33.1368,
12.9952

■ 41.0097, 28.7469,
8.0608

■ 38.8326, 25.2307,
4.7516

■ 37.2569, 22.5254,
2.8512

■ 36.5038, 21.1617,
2.1607

Harmonies

Analogous

The Analogous color harmony consists of three colors that are next to each other on the color wheel.



70.9257, 70.0008, 73.0119



69.7387, 70.0008, 67.5935



67.7062, 70.0008, 64.5790

Triad

The Triadic color harmony groups three colors that are evenly spaced from another and form a triangle on the color wheel.



69.7387, 70.0008, 67.5935



62.3344, 70.0008, 72.9291



67.6760, 70.0008, 89.2051

Complementary

The Complementary color scheme is a pair of colors which are on the opposite of each other on the color wheel.



69.7387, 70.0008, 67.5935



68.4818, 75.1305, 91.0136

Split Complementary

Split-complementary colors differ from the complementary color scheme. The scheme consists of three colors, the original color and two neighbors of the complement color.



65.3748, 70.0008, 89.1798



69.7387, 70.0008, 67.5935



62.3268, 70.0008, 79.5186

Square

The Square scheme is like the rectangle color scheme, but the four colors are evenly spaced on the color wheel.



69.7387, 70.0008, 67.5935



63.4495, 70.0008, 67.5359



63.4284, 70.0008, 85.5487



69.7162, 70.0008, 85.6161

Rectangle

The Rectangle color scheme consists of four colors that form a rectangle on the color wheel.



69.7387, 70.0008, 67.5935



66.1622, 70.0008, 64.2209



63.4284, 70.0008, 85.5487



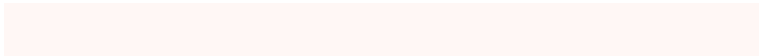
66.9065, 70.0008, 89.6254

Sweetspot

The Sweet Spot groups the original color and five complimentary colors.



69.7406, 70.0039, 67.5950



91.0592, 94.5770, 99.6821



70.9000, 67.3252, 83.3876



19.3341, 20.0305, 20.9766



0.0000, 0.0000, 0.0000



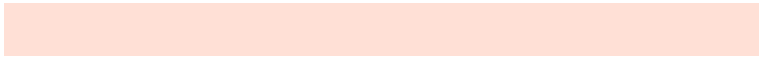
20.3446, 21.4041, 23.3091

Same Dimension

The Same Dimension uses a secret algorithm to generate beautiful new colors.



69.7406, 70.0039, 67.5950



80.1680, 79.6549, 74.9020



73.9645, 78.4516, 69.0029



15.3716, 15.6662, 15.7324



20.0172, 11.7286, 1.2088



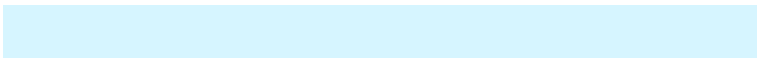
1.6463, 1.0699, 0.1197

Inverse Universe

The Inverse Universe completely reimagines the original color for something new.



68.4818, 75.1305, 91.0136



78.4302, 86.7267, 107.2140



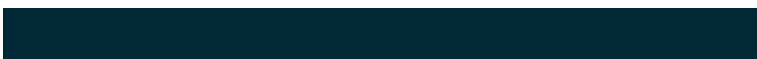
64.2580, 66.6830, 89.6056



15.1801, 16.4466, 19.2967



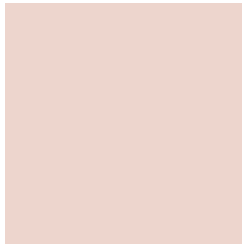
17.1164, 20.8797, 46.8710



1.4194, 1.7902, 3.7056

Previews

White Background



This preview shows how the XYZ color 69.7387, 70.0008, 67.5935 looks on a white background.

Color Contrast Check

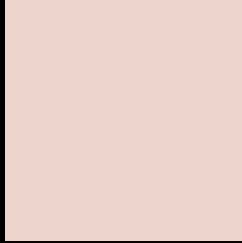
Large Text (above 18pt) WCAG AA × Fail

Any Text WCAG AA × Fail

Large Text (above 18pt) WCAG AAA × Fail

Any Text WCAG AAA × Fail

Black Background



This preview shows how the XYZ color 69.7387, 70.0008, 67.5935 looks on a black background.

Color Contrast Check

Large Text (above 18pt) WCAG AA ✓ Pass

Any Text WCAG AA ✓ Pass

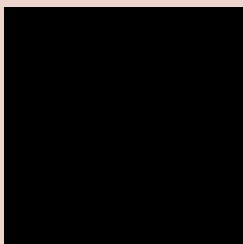
Large Text (above 18pt) WCAG AAA ✓ Pass

Any Text WCAG AAA ✓ Pass

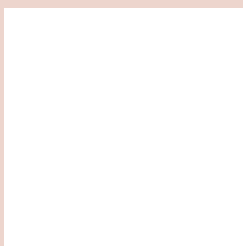
If you want to check with other color combinations, try the [Color Contrast Checker](#).

XYZ 69.7387, 70.0008, 67.5935

Background



This preview shows how black text looks on a background with the XYZ color 69.7387, 70.0008, 67.5935.

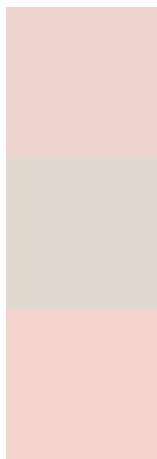


This preview shows how white text looks on a background with the XYZ color 69.7387, 70.0008,

Color Blindness Simulation

Color vision deficiency is a very complex topic, and I could not describe the different causes any better than Wikipedia does, so if you want to learn more, you should check out their [article about color blindness](#).

Dichromacy



Original Color

69.7387, 70.0008, 67.5935

Protanopia

66.8158, 69.9780, 69.0170

Deuteranopia

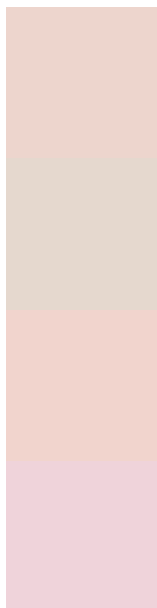
71.6219, 70.2294, 67.5384



Tritanopia

72.7092, 70.1094, 81.6518

Trichromacy



Original Color

69.7387, 70.0008, 67.5935

Protanomaly

68.0095, 70.2260, 68.3630

Deuteranomaly

70.8386, 70.1955, 67.5731

Tritanomaly

71.5458, 70.0012, 76.0704

Monochromacy



Original Color

69.7387, 70.0008, 67.5935

Achromatopsia

67.3311, 70.8376, 77.1421

Achromatomaly

68.3145, 70.6495, 73.6545

CSS Examples

Text

The CSS property to change the color of the text to XYZ 69.7387, 70.0008, 67.5935 is called "color". The color property can be set on classes, ids or directly on the HTML element.

This example shows how text in the color rgb(237, 213, 205) looks like.

```
.text, #text, p{  
    color:rgb(237, 213, 205)  
}
```

If you want to add a text shadow in that color use the text-shadow property, you can generate a text shadow directly with our [CSS Text Shadow Generator](#).

Here you see how black text with a 4 pixel rgb(237, 213, 205) colored shadow looks like.

```
.shadow{ text-shadow: 4px 4px 2px rgb(237, 213, 205) }
```

Border

The CSS property to change the border of an element to XYZ 69.7387, 70.0008, 67.5935 is called "border". The border property can be set on classes, ids or directly on the HTML element.

This example shows the color as border, it can be applied via the CSS property "border" or "border-color".

```
.border, #border, table{ border:4px solid rgb(237, 213, 205) }
```


If only the border color should be changed use the property `border-color`.

```
.border{ border-color:rgb(237, 213, 205) }
```

If you want to add a box shadow in that color use:

Here you see how a box with a 4 pixel `rgb(237, 213, 205)` colored shadow looks like.

```
.boxshadow{ -moz-box-shadow:4px 4px 4px  
4px rgb(237, 213, 205); -webkit-box-  
shadow:4px 4px 4px 4px rgb(237, 213, 205);  
box-shadow:4px 4px 4px 4px rgb(237, 213,  
205) }
```

Background

The CSS property to change the background color of an element to XYZ 69.7387, 70.0008, 67.5935 is called "background". The background property can be set on classes, ids or directly on the HTML element.

```
.background, #background, body{  
background: rgb(237, 213, 205) }
```

If only the background color should be changed can be used:

```
.background{ background-color: rgb(237,  
213, 205) }
```

This example shows the color as background, it is applied via the CSS property "background".

To optimize and compress your CSS code, you can use our [online CSS compressor and optimizer](#) based on csstidy. If you want to create a linear or radial gradient as background or border, check our [CSS Gradient Generator](#).

Hey! You found this booklet interesting? Support Converting Colors with the new Membership Option!

The pro membership hides all ads, plus gives you double the colors in the color bucket, and more awesome pro features!

[Learn more, Memberships starting at \\$2.50/m!](#)

**Follow me
on Twitter!**

@ConvertingColor