

# Converting Colors

XYZ(69.8099, 69.7972, 78.0412)

Have a look what the booklet for  
XYZ(69.8099, 69.7972, 78.0412)  
contains.

<b>XYZ(69.8004, 69.7979, 78.2001)</b> .....	3
<b><i>Conversions</i></b> .....	4
<b><i>Details</i></b> .....	6
<b><i>Harmonies</i></b> .....	12
<b><i>Previews</i></b> .....	24
<b><i>Color Blindness Simulation</i></b> .....	28
<b><i>CSS Examples</i></b> .....	31

# **Color**

**XYZ(69.8004, 69.7979,  
78.2001)**

# Conversions

## Conversions Part 1

Format	Color
Hex	E7D5DD
RGB	231, 213, 221
RGB Percent	91%, 84%, 87%
CMY	0.0941, 0.1647, 0.1333
CMYK	0.00, 0.08, 0.04, 0.09
HSL	333°, 27%, 87%
HSV	333°, 8%, 91%
XYZ	69.8004, 69.7979, 78.2001
YIQ	219.2940, 8.1600, 6.3040

# Conversions

## Conversions Part 2

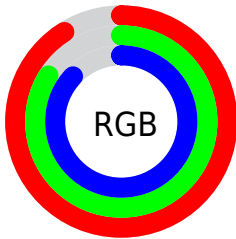
Format	Color
R <sub>YB</sub>	231, 213, 221
Decimal	15193565
CIE Lab	86.90, 7.58, -1.70
CIE LCh	87, 7.767, 347.378
Yxy	69.7979, 0.3205, 0.3205
Android (android.graphics.Color)	4293383645 (0xFFE7D5DD)
YUV	219.2940, 0.8411, 10.2662
Hunter-Lab	83.5451, 2.9294, 2.9848

# Details

The XYZ color **69.8004, 69.7979, 78.2001** is a light color, and the websafe version is hex **CCCCCC**. A complement of this color would be **69.3384, 76.6275, 80.9518**, and the grayscale version is **67.5281, 71.0448, 77.3678**.

A 20% lighter version of the original color is **95.0500, 100.0000, 108.9000**, and **36.7890, 36.3209, 41.1480** is the 20% darker color. If you saturate the color by 10%, you get **62.7539, 58.3373, 67.7340**, and if you desaturate by 10%, it is **77.8092, 82.9721, 89.6339**.

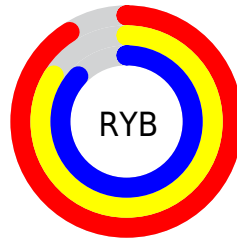
# Distribution



Red (91%)

Green (84%)

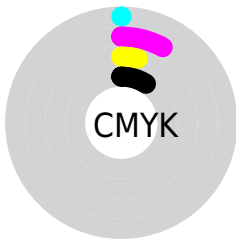
Blue (87%)



Red (91%)

Yellow (84%)

Blue (87%)

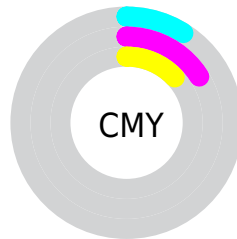


Cyan (0%)

Magenta (8%)

Yellow (4%)

Black (9%)



Cyan (9%)

Magenta (16%)

Yellow (13%)

# Brightness & Saturation Gradients

These gradients show how the XYZ color 69.8004, 69.7979, 78.2001 changes by changing the brightness by 10 percent. The first figure shows a shift by +10% for each color and the second figure -10%.

Similar to the brightness gradients but the following saturation gradients show a change of the XYZ color 69.8004, 69.7979, 78.2001 by changing the saturation by 10% instead.



69.8004, 69.7979,  
78.2001

69.8004, 69.7979,  
78.2001

449.1262,  
459.8401, 508.3920

51.6428, 51.3618,  
57.7209

117.9519,  
118.9205, 132.6206

36.9436, 36.4966,  
41.1711

148.6765,  
150.3758, 167.3990

25.3373, 24.8180,  
28.1321

184.3209,  
186.9396, 207.7809

16.4586, 15.9415,  
18.1854

225.2504,  
228.9963, 254.1849

9.9421, 9.4828,  
10.9123

271.8303,  
276.9303, 307.0295

5.4226, 5.0574,  
5.8945

324.4260,

2.5346, 2.2810,

331.1260, 366.7331

2.7133

383.4028,  
391.9678, 433.7145

■ 0.9127, 0.7636,  
0.9501

■ 0.0000, 0.0000,  
0.0000

■ 69.8004, 69.7979,  
78.2001

■ 69.8004, 69.7979,  
78.2001

■ 62.7539, 58.3373,  
67.7340

■ 77.8092, 82.9721,  
89.6339

■ 56.6261, 48.5103,  
58.2040

■ 85.4536, 95.2044,  
101.6044

■ 51.3786, 40.2443,  
49.5836

■ 86.7654, 95.7291,  
108.5123

■ 46.9682, 33.4574,  
41.8427

■ 43.3474, 28.0603,  
34.9497

■ 40.4642, 23.9541,  
28.8703

■ 38.2594, 21.0262,  
23.5675

■ 36.6641, 19.1448,  
18.9999

■ 35.5852, 18.1297,  
15.1171

# Harmonies

## Analogous

The Analogous color harmony consists of three colors that are next to each other on the color wheel.



68.9387, 69.7979, 82.9596



69.8004, 69.7979, 78.2001



69.7230, 69.7979, 73.0555

# Triad

The Triadic color harmony groups three colors that are evenly spaced from another and form a triangle on the color wheel.



69.8004, 69.7979, 78.2001



65.3052, 69.7979, 66.8644



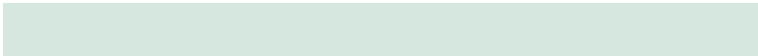
64.0086, 69.7979, 83.5823

# Complementary

The Complementary color scheme is a pair of colors which are on the opposite of each other on the color wheel.



69.8004, 69.7979, 78.2001



69.3384, 76.6275, 80.9518

# Split Complementary

Split-complementary colors differ from the complementary color scheme. The scheme consists of three colors, the original color and two neighbors of the complement color.



63.0698, 69.7979, 79.0186



69.8004, 69.7979, 78.2001



63.8090, 69.7979, 69.4372

# Square

The Square scheme is like the rectangle color scheme, but the four colors are evenly spaced on the color wheel.



69.8004, 69.7979, 78.2001



67.1053, 69.7979, 66.6677



62.9975, 69.7979, 73.8377



65.5821, 69.7979, 86.1607



# Rectangle

The Rectangle color scheme consists of four colors that form a rectangle on the color wheel.



69.8004, 69.7979, 78.2001



69.1491, 69.7979, 70.0979



62.9975, 69.7979, 73.8377



63.6096, 69.7979, 82.2203

# Sweetspot

The Sweet Spot groups the original color and five complimentary colors.



69.8024, 69.8009, 78.2016



92.9916, 96.6079, 105.9795



68.6212, 69.0335, 85.3103



19.9256, 20.7136, 22.7147



0.0000, 0.0000, 0.0000



20.3446, 21.4041, 23.3091



# Same Dimension

The Same Dimension uses a secret algorithm to generate beautiful new colors.



69.8024, 69.8009, 78.2016



86.1749, 85.4271, 96.1464



68.9890, 69.8387, 72.7986



14.6418, 14.4739, 16.3139



19.8977, 10.0933, 8.3563



1.5165, 0.7643, 0.8605



# Inverse Universe

The Inverse Universe completely reimagines the original color for something new.



69.8024, 69.8009, 78.2016



86.1749, 85.4271, 96.1464



70.1912, 76.5667, 86.6816



14.6418, 14.4739, 16.3139



19.8977, 10.0933, 8.3563

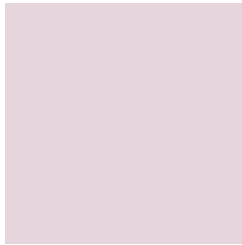


1.5165, 0.7643, 0.8605



# Previews

## White Background



This preview shows how the XYZ color 69.8004, 69.7979, 78.2001 looks on a white background.

## Color Contrast Check

Large Text (above 18pt) WCAG AA × Fail

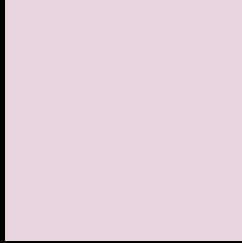
Any Text WCAG AA × Fail

Large Text (above 18pt) WCAG AAA × Fail

Any Text WCAG AAA × Fail



# Black Background



This preview shows how the XYZ color 69.8004, 69.7979, 78.2001 looks on a black background.

## Color Contrast Check

Large Text (above 18pt) WCAG AA ✓ Pass

Any Text WCAG AA ✓ Pass

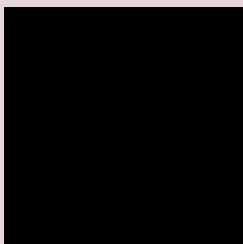
Large Text (above 18pt) WCAG AAA ✓ Pass

Any Text WCAG AAA ✓ Pass

If you want to check with other color combinations, try the [Color Contrast Checker](#).

# XYZ 69.8004, 69.7979, 78.2001

## Background



This preview shows how black text looks on a background with the XYZ color 69.8004, 69.7979, 78.2001.



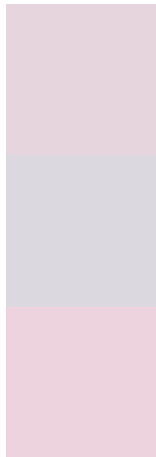
This preview shows how white text looks on a background with the XYZ color 69.8004, 69.7979, 78.2001.



# Color Blindness Simulation

Color vision deficiency is a very complex topic, and I could not describe the different causes any better than Wikipedia does, so if you want to learn more, you should check out their [article about color blindness](#).

## Dichromacy



### Original Color

69.8004, 69.7979, 78.2001

### Protanopia

67.3903, 69.6551, 79.7050

### Deuteranopia

71.2705, 69.8135, 78.1256



## Tritanopia

70.8258, 69.8442, 83.1471

# Trichromacy



## Original Color

69.8004, 69.7979, 78.2001

## Protanomaly

68.2257, 69.7221, 78.9691

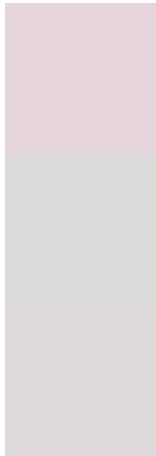
## Deuteranomaly

70.8556, 69.9696, 78.1776

## Tritanomaly

70.4128, 69.6790, 80.9724

# Monochromacy



## Original Color

69.8004, 69.7979, 78.2001

## Achromatopsia

67.3311, 70.8376, 77.1421

## Achromatomaly

68.1625, 70.4810, 77.7218

# CSS Examples

## Text

The CSS property to change the color of the text to XYZ 69.8004, 69.7979, 78.2001 is called "color". The color property can be set on classes, ids or directly on the HTML element.

This example shows how text in the color `rgb(231, 213, 221)` looks like.

```
.text, #text, p{  
    color:rgb(231, 213, 221)  
}
```

If you want to add a text shadow in that color use the text-shadow property, you can generate a text shadow directly with our [CSS Text Shadow Generator](#).

Here you see how black text with a 4 pixel rgb(231, 213, 221) colored shadow looks like.

```
.shadow{ text-shadow: 4px 4px 2px rgb(231, 213, 221) }
```

## Border

The CSS property to change the border of an element to XYZ 69.8004, 69.7979, 78.2001 is called "border". The border property can be set on classes, ids or directly on the HTML element.

This example shows the color as border, it can be applied via the CSS property "border" or "border-color".

```
.border, #border, table{ border:4px solid rgb(231, 213, 221) }
```



If only the border color should be changed use the property `border-color`.

```
.border{ border-color:rgb(231, 213, 221) }
```

If you want to add a box shadow in that color use:

Here you see how a box with a 4 pixel `rgb(231, 213, 221)` colored shadow looks like.

```
.boxshadow{ -moz-box-shadow:4px 4px 4px  
4px rgb(231, 213, 221); -webkit-box-  
shadow:4px 4px 4px 4px rgb(231, 213, 221);  
box-shadow:4px 4px 4px 4px rgb(231, 213,  
221) }
```

# Background

The CSS property to change the background color of an element to XYZ 69.8004, 69.7979, 78.2001 is called "background". The background property can be set on classes, ids or directly on the HTML element.

```
.background, #background, body{  
background: rgb(231, 213, 221) }
```

If only the background color should be changed can be used:

```
.background{ background-color: rgb(231,  
213, 221) }
```

This example shows the color as background, it is applied via the CSS property "background".

To optimize and compress your CSS code, you can use our [online CSS compressor and optimizer](#) based on csstidy. If you want to create a linear or radial gradient as background or border, check our [CSS Gradient Generator](#).

Hey! You found this booklet interesting? Support Converting Colors with the new Membership Option!

The pro membership hides all ads, plus gives you double the colors in the color bucket, and more awesome pro features!

**[Learn more, Memberships starting at \\$2.50/m!](#)**

**Follow me  
on Twitter!**

@ConvertingColor