

Converting Colors

XYZ(69.8167, 69.1131, 74.8827)

Have a look what the booklet for
XYZ(69.8167, 69.1131, 74.8827)
contains.

XYZ(69.6206, 69.0388, 74.6222)	3
<i>Conversions</i>	4
<i>Details</i>	6
<i>Harmonies</i>	12
<i>Previews</i>	24
<i>Color Blindness Simulation</i>	28
<i>CSS Examples</i>	31

Color

**XYZ(69.6206, 69.0388,
74.6222)**

Conversions

Conversions Part 1

Format	Color
Hex	EAD3D8
RGB	234, 211, 216
RGB Percent	92%, 83%, 85%
CMY	0.0823, 0.1725, 0.1529
CMYK	0.00, 0.10, 0.08, 0.08
HSL	347°, 35%, 87%
HSV	347°, 10%, 92%
XYZ	69.6206, 69.0388, 74.6222
YIQ	218.4470, 12.1030, 6.4310

Conversions

Conversions Part 2

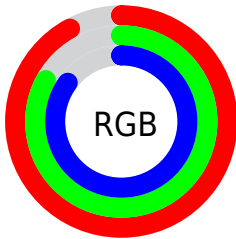
Format	Color
RYB	234, 211, 216
Decimal	15389656
CIELab	86.52, 8.81, 0.43
CIELCh	87, 8.816, 2.806
Yxy	69.0388, 0.3264, 0.3237
Android (android.graphics.Color)	4293579736 (0xFFEAD3D8)
YUV	218.4470, -1.2064, 13.6400
Hunter-Lab	83.0896, 4.1580, 4.9148

Details

The XYZ color **69.6206, 69.0388, 74.6222** is a light color, and the websafe version is hex **CCCCCC**. A complement of this color would be **70.4323, 78.3534, 85.5440**, and the grayscale version is **66.9529, 70.4397, 76.7088**.

A 20% lighter version of the original color is **95.0500, 100.0000, 108.9000**, and **36.6816, 35.8151, 38.6979** is the 20% darker color. If you saturate the color by 10%, you get **61.9878, 57.3534, 61.0392**, and if you desaturate by 10%, it is **78.3675, 82.5283, 89.8806**.

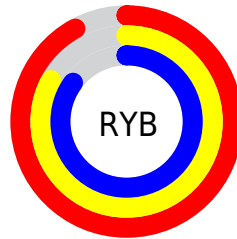
Distribution



Red (92%)

Green (83%)

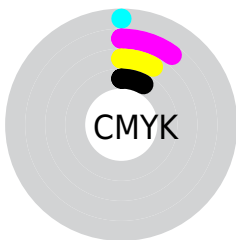
Blue (85%)



Red (92%)

Yellow (83%)

Blue (85%)

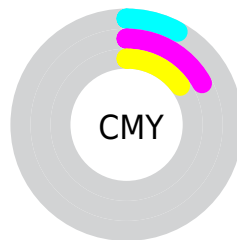


Cyan (0%)

Magenta (10%)

Yellow (8%)

Black (8%)



Cyan (8%)

Magenta (17%)

Yellow (15%)

Brightness & Saturation Gradients

These gradients show how the XYZ color 69.6206, 69.0388, 74.6222 changes by changing the brightness by 10 percent. The first figure shows a shift by +10% for each color and the second figure -10%.

Similar to the brightness gradients but the following saturation gradients show a change of the XYZ color 69.6206, 69.0388, 74.6222 by changing the saturation by 10% instead.

69.6206, 69.0388,
74.6222

69.6206, 69.0388,
74.6222

448.5040,
457.1678, 495.8387

51.4958, 50.7433,
54.8036

117.6968,
117.8370, 127.5196

36.8260, 36.0044,
38.8469

148.3788,
149.1085, 161.4355

25.2458, 24.4376,
26.3338

183.9773,
185.4741, 200.8875

16.3900, 15.6585,
16.8455

224.8576,
227.3182, 246.2942

9.8931, 9.2828,
9.9636

271.3851,
275.0253, 298.0741

5.3899, 4.9261,
5.2695

323.9250,

2.5149, 2.2040,

328.9796, 356.6458

2.3448

382.8429,
389.5657, 422.4279

■ 0.9028, 0.7222,
0.7561

■ 0.0000, 0.0000,
0.0000

■ 69.6206, 69.0388,
74.6222

■ 69.6206, 69.0388,
74.6222

■ 61.9878, 57.3534,
61.0392

■ 78.3675, 82.5283,
89.8806

■ 55.4183, 47.3867,
49.0695

■ 87.3634, 96.0812,
106.5641

■ 49.8659, 39.0600,
38.6538

■ 87.7420, 96.2326,
108.5580

■ 45.2786, 32.2850,
29.7273

■ 41.5999, 26.9648,
22.2206

■ 38.7672, 22.9918,
16.0587

■ 36.7094, 20.2431,
11.1590

■ 35.3435, 18.5734,
7.4295

■ 34.5374, 17.7418,
4.7542

Harmonies

Analogous

The Analogous color harmony consists of three colors that are next to each other on the color wheel.



69.1749, 69.0388, 80.4297



69.6206, 69.0388, 74.6222



68.9759, 69.0388, 69.2408

Triad

The Triadic color harmony groups three colors that are evenly spaced from another and form a triangle on the color wheel.



69.6206, 69.0388, 74.6222



63.5144, 69.0388, 66.1086



63.8408, 69.0388, 85.6262

Complementary

The Complementary color scheme is a pair of colors which are on the opposite of each other on the color wheel.



69.6206, 69.0388, 74.6222



70.4323, 78.3534, 85.5440

Split Complementary

Split-complementary colors differ from the complementary color scheme. The scheme consists of three colors, the original color and two neighbors of the complement color.



62.3734, 69.0388, 81.4316



69.6206, 69.0388, 74.6222



62.1877, 69.0388, 70.1476

Square

The Square scheme is like the rectangle color scheme, but the four colors are evenly spaced on the color wheel.



69.6206, 69.0388, 74.6222



65.4272, 69.0388, 64.4878



61.7743, 69.0388, 75.7235



65.8118, 69.0388, 86.9745

Rectangle

The Rectangle color scheme consists of four colors that form a rectangle on the color wheel.



69.6206, 69.0388, 74.6222



68.0222, 69.0388, 66.5630



61.7743, 69.0388, 75.7235



63.2737, 69.0388, 84.4920

Sweetspot

The Sweet Spot groups the original color and five complimentary colors.



69.6225, 69.0418, 74.6237



91.7087, 94.8361, 103.1040



70.3440, 69.1300, 87.4786



19.4429, 20.0108, 21.7438



0.0000, 0.0000, 0.0000



20.3446, 21.4041, 23.3091

Same Dimension

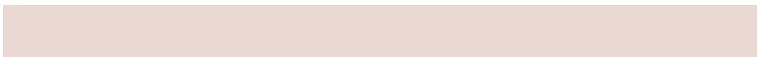
The Same Dimension uses a secret algorithm to generate beautiful new colors.



69.6225, 69.0418, 74.6237



82.4339, 80.5588, 86.8416



70.5390, 71.8928, 71.7905



15.1994, 15.1076, 16.3354



19.4396, 9.9785, 2.8501



1.5614, 0.7975, 0.4079

Inverse Universe

The Inverse Universe completely reimagines the original color for something new.



69.6225, 69.0418, 74.6237



82.4339, 80.5588, 86.8416



69.4244, 75.2050, 88.6997



15.1994, 15.1076, 16.3354



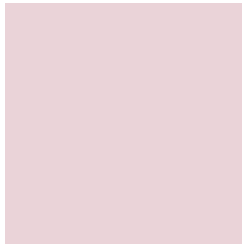
19.4396, 9.9785, 2.8501



1.5614, 0.7975, 0.4079

Previews

White Background



This preview shows how the XYZ color 69.6206, 69.0388, 74.6222 looks on a white background.

Color Contrast Check

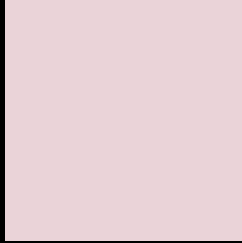
Large Text (above 18pt) WCAG AA × Fail

Any Text WCAG AA × Fail

Large Text (above 18pt) WCAG AAA × Fail

Any Text WCAG AAA × Fail

Black Background



This preview shows how the XYZ color 69.6206, 69.0388, 74.6222 looks on a black background.

Color Contrast Check

Large Text (above 18pt) WCAG AA ✓ Pass

Any Text WCAG AA ✓ Pass

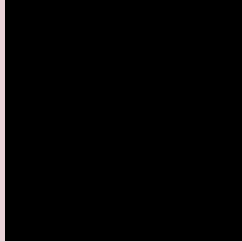
Large Text (above 18pt) WCAG AAA ✓ Pass

Any Text WCAG AAA ✓ Pass

If you want to check with other color combinations, try the [Color Contrast Checker](#).

XYZ 69.6206, 69.0388, 74.6222

Background



This preview shows how black text looks on a background with the XYZ color 69.6206, 69.0388, 74.6222.



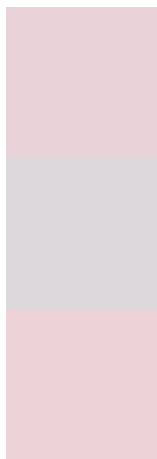
This preview shows how white text looks on a background with the XYZ color 69.6206, 69.0388,

74.6222.

Color Blindness Simulation

Color vision deficiency is a very complex topic, and I could not describe the different causes any better than Wikipedia does, so if you want to learn more, you should check out their [article about color blindness](#).

Dichromacy



Original Color

69.6206, 69.0388, 74.6222

Protanopia

66.8572, 69.4419, 76.8977

Deuteranopia

70.3663, 69.0556, 74.5861



Tritanopia

70.7889, 68.7541, 81.4914

Trichromacy



Original Color

69.6206, 69.0388, 74.6222

Protanomaly

67.7528, 69.1626, 76.1084

Deuteranomaly

70.0333, 68.8839, 74.5705

Tritanomaly

70.4924, 69.0293, 78.7159

Monochromacy



Original Color

69.6206, 69.0388, 74.6222

Achromatopsia

66.6397, 70.1102, 76.3500

Achromatomaly

67.5653, 69.4579, 75.4913

CSS Examples

Text

The CSS property to change the color of the text to XYZ 69.6206, 69.0388, 74.6222 is called "color". The color property can be set on classes, ids or directly on the HTML element.

This example shows how text in the color `rgb(234, 211, 216)` looks like.

```
.text, #text, p{  
    color:rgb(234, 211, 216)  
}
```

If you want to add a text shadow in that color use the text-shadow property, you can generate a text shadow directly with our [CSS Text Shadow Generator](#).

Here you see how black text with a 4 pixel rgb(234, 211, 216) colored shadow looks like.

```
.shadow{ text-shadow: 4px 4px 2px rgb(234, 211, 216) }
```

Border

The CSS property to change the border of an element to XYZ 69.6206, 69.0388, 74.6222 is called "border". The border property can be set on classes, ids or directly on the HTML element.

This example shows the color as border, it can be applied via the CSS property "border" or "border-color".

```
.border, #border, table{ border:4px solid rgb(234, 211, 216) }
```


If only the border color should be changed use the property `border-color`.

```
.border{ border-color:rgb(234, 211, 216) }
```

If you want to add a box shadow in that color use:

Here you see how a box with a 4 pixel `rgb(234, 211, 216)` colored shadow looks like.

```
.boxshadow{ -moz-box-shadow:4px 4px 4px  
4px rgb(234, 211, 216); -webkit-box-  
shadow:4px 4px 4px 4px rgb(234, 211, 216);  
box-shadow:4px 4px 4px 4px rgb(234, 211,  
216) }
```

Background

The CSS property to change the background color of an element to XYZ 69.6206, 69.0388, 74.6222 is called "background". The background property can be set on classes, ids or directly on the HTML element.

```
.background, #background, body{  
background: rgb(234, 211, 216) }
```

If only the background color should be changed can be used:

```
.background{ background-color: rgb(234,  
211, 216) }
```

This example shows the color as background, it is applied via the CSS property "background".

To optimize and compress your CSS code, you can use our [online CSS compressor and optimizer](#) based on csstidy. If you want to create a linear or radial gradient as background or border, check our [CSS Gradient Generator](#).

Hey! You found this booklet interesting? Support Converting Colors with the new Membership Option!

The pro membership hides all ads, plus gives you double the colors in the color bucket, and more awesome pro features!

[Learn more, Memberships starting at \\$2.50/m!](#)

**Follow me
on Twitter!**

@ConvertingColor