

Converting Colors

XYZ(69.8865, 70.2637, 74.2345)

Have a look what the booklet for
XYZ(69.8865, 70.2637, 74.2345)
contains.

XYZ(69.9166, 70.3231, 74.1787)	3
<i>Conversions</i>	4
<i>Details</i>	6
<i>Harmonies</i>	12
<i>Previews</i>	24
<i>Color Blindness Simulation</i>	28
<i>CSS Examples</i>	31

Color

**XYZ(69.9166, 70.3231,
74.1787)**

Conversions

Conversions Part 1

Format	Color
Hex	E9D6D7
RGB	233, 214, 215
RGB Percent	91%, 84%, 84%
CMY	0.0863, 0.1608, 0.1569
CMYK	0.00, 0.08, 0.08, 0.09
HSL	357°, 30%, 88%
HSV	357°, 8%, 91%
XYZ	69.9166, 70.3231, 74.1787
YIQ	219.7950, 11.0030, 4.3390

Conversions

Conversions Part 2

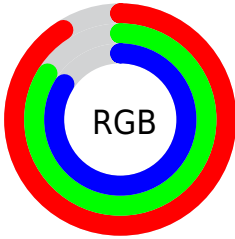
Format	Color
R _Y B	233, 214, 215
Decimal	15324887
CIE Lab	87.16, 6.72, 1.87
CIE LCh	87, 6.976, 15.558
Yxy	70.3231, 0.3261, 0.3280
Android (android.graphics.Color)	4293514967 (0xFFE9D6D7)
YUV	219.7950, -2.3639, 11.5808
Hunter-Lab	83.8589, 2.0698, 6.2553

Details

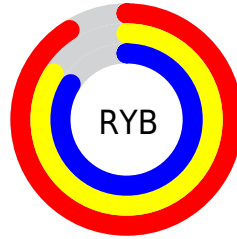
The XYZ color **69.9166, 70.3231, 74.1787** is a light color, and the websafe version is hex **CCCCCC**. A complement of this color would be **71.4387, 78.4020, 87.7157**, and the grayscale version is **67.8969, 71.4328, 77.7903**.

A 20% lighter version of the original color is **95.0500, 100.0000, 108.9000**, and **36.8748, 36.6815, 38.3944** is the 20% darker color. If you saturate the color by 10%, you get **61.7883, 58.3039, 58.4042**, and if you desaturate by 10%, it is **79.2752, 84.1885, 92.2539**.

Distribution



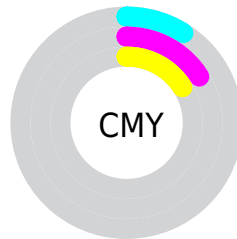
- Red (91%)
- Green (84%)
- Blue (84%)



- Red (91%)
- Yellow (84%)
- Blue (84%)



- Cyan (0%)
- Magenta (8%)
- Yellow (8%)
- Black (9%)



- Cyan (9%)
- Magenta (16%)
- Yellow (16%)

Brightness & Saturation Gradients

These gradients show how the XYZ color 69.9166, 70.3231, 74.1787 changes by changing the brightness by 10 percent. The first figure shows a shift by +10% for each color and the second figure -10%.

Similar to the brightness gradients but the following saturation gradients show a change of the XYZ color 69.9166, 70.3231, 74.1787 by changing the saturation by 10% instead.

69.9166, 70.3231,
74.1787

69.9166, 70.3231,
74.1787

449.5281,
461.6837, 494.2698

51.7379, 51.7900,
54.4426

118.1167,
119.6694, 126.8855

37.0196, 36.8377,
38.5601

148.8689,
151.2514, 160.6933

25.3964, 25.0819,
26.1125

184.5429,
187.9518, 200.0287

16.5030, 16.1381,
16.6813

225.5041,
230.1550, 245.3104

9.9739, 9.6219,
9.8480

272.1178,
278.2453, 296.9568

5.4438, 5.1490,
5.1940

324.7495,

2.5473, 2.3349,

332.6073, 355.3864

2.3008

383.7645,
393.6253, 421.0179

■ 0.9192, 0.7921,
0.7317

■ 0.0000, 0.0000,
0.0000

■ 69.9166, 70.3231,
74.1787

■ 69.9166, 70.3231,
74.1787

■ 61.7883, 58.3039,
58.4042

■ 79.2752, 84.1885,
92.2539

■ 54.8336, 48.0444,
44.8338

■ 87.4146, 96.0638,
108.5427

■ 49.0000, 39.4647,
33.3708

■ 44.2288, 32.4754,
23.9093

■ 40.4559, 26.9787,
16.3346

■ 37.6104, 22.8661,
10.5202

■ 35.6119, 20.0142,
6.3240

■ 34.3665, 18.2781,
3.5822

■ 33.7471, 17.4556,
2.0924

Harmonies

Analogous

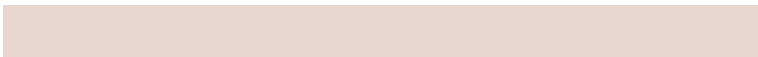
The Analogous color harmony consists of three colors that are next to each other on the color wheel.



69.9330, 70.3231, 78.8388



69.9166, 70.3231, 74.1787



69.0669, 70.3231, 70.3159

Triad

The Triadic color harmony groups three colors that are evenly spaced from another and form a triangle on the color wheel.



69.9166, 70.3231, 74.1787



64.6190, 70.3231, 70.4333



66.0585, 70.3231, 85.6303

Complementary

The Complementary color scheme is a pair of colors which are on the opposite of each other on the color wheel.



69.9166, 70.3231, 74.1787



71.4387, 78.4020, 87.7157

Split Complementary

Split-complementary colors differ from the complementary color scheme. The scheme consists of three colors, the original color and two neighbors of the complement color.



64.6614, 70.3231, 83.1841



69.9166, 70.3231, 74.1787



63.8396, 70.3231, 74.3449

Square

The Square scheme is like the rectangle color scheme, but the four colors are evenly spaced on the color wheel.



69.9166, 70.3231, 74.1787



65.9998, 70.3231, 68.2144



63.8550, 70.3231, 79.0119



67.6873, 70.3231, 85.5813

Rectangle

The Rectangle color scheme consists of four colors that form a rectangle on the color wheel.



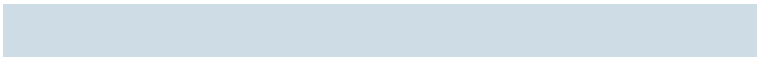
69.9166, 70.3231, 74.1787



68.1501, 70.3231, 68.6572



63.8550, 70.3231, 79.0119



65.5468, 70.3231, 85.0683

Sweetspot

The Sweet Spot groups the original color and five complimentary colors.



69.9186, 70.3262, 74.1802



92.6761, 96.4817, 104.3184



71.9488, 71.0907, 87.0214



19.8614, 20.6879, 22.3764



0.0000, 0.0000, 0.0000



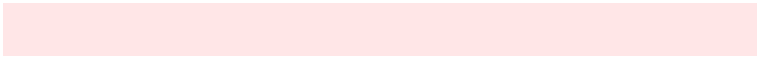
20.3446, 21.4041, 23.3091

Same Dimension

The Same Dimension uses a secret algorithm to generate beautiful new colors.



69.9186, 70.3262, 74.1802



83.7986, 83.3360, 87.1494



71.9272, 74.5477, 74.2203



15.0975, 15.0668, 15.7986



19.1198, 9.8506, 1.1662



1.5127, 0.7780, 0.1511

Inverse Universe

The Inverse Universe completely reimagines the original color for something new.



69.9186, 70.3262, 74.1802



83.7986, 83.3360, 87.1494



69.3043, 73.9063, 87.7043



15.0975, 15.0668, 15.7986



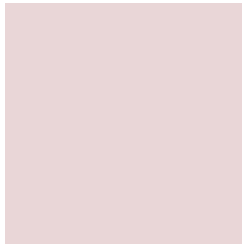
19.1198, 9.8506, 1.1662



1.5127, 0.7780, 0.1511

Previews

White Background



This preview shows how the XYZ color 69.9166, 70.3231, 74.1787 looks on a white background.

Color Contrast Check

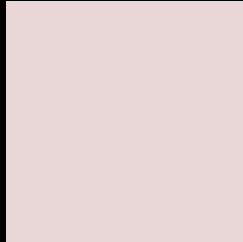
Large Text (above 18pt) WCAG AA × Fail

Any Text WCAG AA × Fail

Large Text (above 18pt) WCAG AAA × Fail

Any Text WCAG AAA × Fail

Black Background



This preview shows how the XYZ color 69.9166, 70.3231, 74.1787 looks on a black background.

Color Contrast Check

Large Text (above 18pt) WCAG AA ✓ Pass

Any Text WCAG AA ✓ Pass

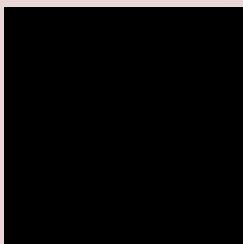
Large Text (above 18pt) WCAG AAA ✓ Pass

Any Text WCAG AAA ✓ Pass

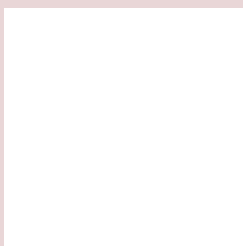
If you want to check with other color combinations, try the [Color Contrast Checker](#).

XYZ 69.9166, 70.3231, 74.1787

Background



This preview shows how black text looks on a background with the XYZ color 69.9166, 70.3231, 74.1787.



This preview shows how white text looks on a background with the XYZ color 69.9166, 70.3231,

Color Blindness Simulation

Color vision deficiency is a very complex topic, and I could not describe the different causes any better than Wikipedia does, so if you want to learn more, you should check out their [article about color blindness](#).

Dichromacy



Original Color

69.9166, 70.3231, 74.1787

Protanopia

67.4614, 70.1651, 75.6333

Deuteranopia

71.6241, 70.0717, 74.7159



Tritanopia

71.9473, 70.4063, 83.9265

Trichromacy



Original Color

69.9166, 70.3231, 74.1787

Protanomaly

68.3146, 70.2384, 74.9225

Deuteranomaly

70.8632, 70.0494, 74.7517

Tritanomaly

71.1805, 70.4627, 80.3701

Monochromacy



Original Color

69.9166, 70.3231, 74.1787

Achromatopsia

68.0267, 71.5694, 77.9390

Achromatomaly

68.7776, 71.2123, 76.4500

CSS Examples

Text

The CSS property to change the color of the text to XYZ 69.9166, 70.3231, 74.1787 is called "color". The color property can be set on classes, ids or directly on the HTML element.

This example shows how text in the color rgb(233, 214, 215) looks like.

```
.text, #text, p{  
    color:rgb(233, 214, 215)  
}
```

If you want to add a text shadow in that color use the text-shadow property, you can generate a text shadow directly with our [CSS Text Shadow Generator](#).

Here you see how black text with a 4 pixel rgb(233, 214, 215) colored shadow looks like.

```
.shadow{ text-shadow: 4px 4px 2px rgb(233, 214, 215) }
```

Border

The CSS property to change the border of an element to XYZ 69.9166, 70.3231, 74.1787 is called "border". The border property can be set on classes, ids or directly on the HTML element.

This example shows the color as border, it can be applied via the CSS property "border" or "border-color".

```
.border, #border, table{ border:4px solid rgb(233, 214, 215) }
```


If only the border color should be changed use the property `border-color`.

```
.border{ border-color:rgb(233, 214, 215) }
```

If you want to add a box shadow in that color use:

Here you see how a box with a 4 pixel `rgb(233, 214, 215)` colored shadow looks like.

```
.boxshadow{ -moz-box-shadow:4px 4px 4px  
4px rgb(233, 214, 215); -webkit-box-  
shadow:4px 4px 4px 4px rgb(233, 214, 215);  
box-shadow:4px 4px 4px 4px rgb(233, 214,  
215) }
```

Background

The CSS property to change the background color of an element to XYZ 69.9166, 70.3231, 74.1787 is called "background". The background property can be set on classes, ids or directly on the HTML element.

```
.background, #background, body{  
background: rgb(233, 214, 215) }
```

If only the background color should be changed can be used:

```
.background{ background-color: rgb(233,  
214, 215) }
```

This example shows the color as background, it is applied via the CSS property "background".

To optimize and compress your CSS code, you can use our [online CSS compressor and optimizer](#) based on csstidy. If you want to create a linear or radial gradient as background or border, check our [CSS Gradient Generator](#).

Hey! You found this booklet interesting? Support Converting Colors with the new Membership Option!

The pro membership hides all ads, plus gives you double the colors in the color bucket, and more awesome pro features!

[Learn more, Memberships starting at \\$2.50/m!](#)

**Follow me
on Twitter!**

@ConvertingColor