

Converting Colors

XYZ(69.9076, 60.8740, 66.1185)

Have a look what the booklet for
XYZ(69.9076, 60.8740, 66.1185)
contains.

| | |
|--|----|
| XYZ(69.8184, 60.7856, 65.8106) | 3 |
| <i>Conversions</i> | 4 |
| <i>Details</i> | 6 |
| <i>Harmonies</i> | 12 |
| <i>Previews</i> | 24 |
| <i>Color Blindness Simulation</i> | 28 |
| <i>CSS Examples</i> | 31 |

Color

**XYZ(69.8184, 60.7856,
65.8106)**

Conversions

Conversions Part 1

| Format | Color |
|-------------|----------------------------|
| Hex | FFBACD |
| RGB | 255, 186, 205 |
| RGB Percent | 100%, 73%, 80% |
| CMY | 0.0000, 0.2706, 0.1961 |
| CMYK | 0.00, 0.27, 0.20, 0.00 |
| HSL | 343°, 100%, 86% |
| HSV | 343°, 27%, 100% |
| XYZ | 69.8184, 60.7856, 65.8106 |
| YIQ | 208.7970, 35.0250, 20.5370 |

Conversions

Conversions Part 2

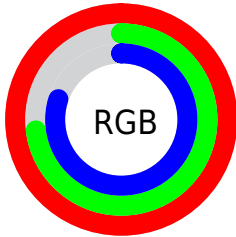
| Format | Color |
|-------------------------------------|-------------------------------|
| R _Y B | 255, 186, 205 |
| Decimal | 16759501 |
| CIE Lab | 82.26, 27.59, 0.32 |
| CIE LCh | 82, 27.596, 0.665 |
| Yxy | 60.7856, 0.3555, 0.3095 |
| Android (android.graphics.Color) | 4294949581 (0xFFFFBACD) |
| YUV | 208.7970, -1.8719, 40.5200 |
| Hunter-Lab | 77.9651, 23.4092, 4.5287 |

Details

The XYZ color **69.8184, 60.7856, 65.8106** is a light color, and the websafe version is hex **FFCCCC**. A complement of this color would be **71.1522, 88.0163, 92.5993**, and the grayscale version is **60.4692, 63.6183, 69.2803**.

A 20% lighter version of the original color is **91.3406, 92.5812, 107.6635**, and **36.8631, 30.6072, 33.2430** is the 20% darker color. If you saturate the color by 10%, you get **62.8173, 50.1449, 53.1139**, and if you desaturate by 10%, it is **78.0444, 73.4541, 80.2170**.

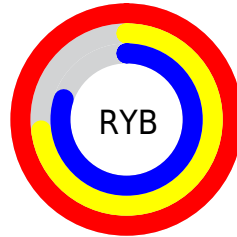
Distribution



Red (100%)

Green (73%)

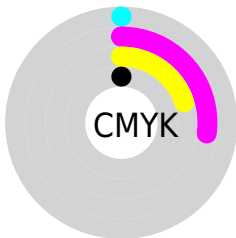
Blue (80%)



Red (100%)

Yellow (73%)

Blue (80%)

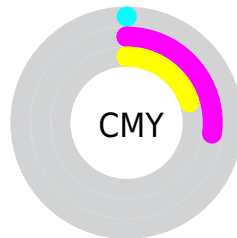


Cyan (0%)

Magenta (27%)

Yellow (20%)

Black (0%)



Cyan (0%)

Magenta (27%)

Yellow (20%)

Brightness & Saturation Gradients

These gradients show how the XYZ color 69.8184, 60.7856, 65.8106 changes by changing the brightness by 10 percent. The first figure shows a shift by +10% for each color and the second figure -10%.

Similar to the brightness gradients but the following saturation gradients show a change of the XYZ color 69.8184, 60.7856, 65.8106 by changing the saturation by 10% instead.

69.8184, 60.7856,
65.8106

69.8184, 60.7856,
65.8106

449.1885,
427.4874, 464.0849

51.6576, 44.0522,
47.6632

117.9774,
105.9684, 114.8389

36.9554, 30.7115,
33.2021

148.7063,
135.1866, 146.5568

25.3464, 20.3793,
22.0089

184.3553,
169.3352, 183.6352

16.4655, 12.6710,
13.6651

225.2897,
208.7985, 226.4928

9.9471, 7.2024,
7.7520

271.8748,
253.9610, 275.5480

5.4259, 3.5890,
3.8512

324.4761,

2.5365, 1.4464,

305.2071, 331.2194

1.5441

383.4589,
362.9211, 393.9255

■ 0.9137, 0.2506,
0.2504

■ 0.0000, 0.0000,
0.0000

■ 69.8184, 60.7856,
65.8106

■ 69.8184, 60.7856,
65.8106

■ 62.8173, 50.1449,
53.1139

■ 78.0444, 73.4541,
80.2170

■ 56.9767, 41.4184,
42.0581

■ 87.5470, 88.2404,
96.3909

■ 52.2327, 34.4935,
32.5750

95.0500, 100.0000,
108.9000

■ 48.5132, 29.2426,
24.5899

■ 45.7371, 25.5208,
18.0216

■ 43.8100, 23.1584,
12.7800

■ 42.6137, 21.9398,
8.7618

■ 42.3520, 21.7048,
7.7857

Harmonies

Analogous

The Analogous color harmony consists of three colors that are next to each other on the color wheel.



68.1892, 60.7856, 83.3277



69.8184, 60.7856, 65.8106



68.0430, 60.7856, 51.0229

Triad

The Triadic color harmony groups three colors that are evenly spaced from another and form a triangle on the color wheel.



69.8184, 60.7856, 65.8106



52.2047, 60.7856, 42.0819



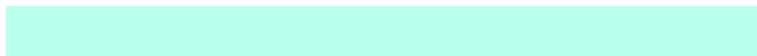
52.4171, 60.7856, 98.5723

Complementary

The Complementary color scheme is a pair of colors which are on the opposite of each other on the color wheel.



69.8184, 60.7856, 65.8106



71.1522, 88.0163, 92.5993

Split Complementary

Split-complementary colors differ from the complementary color scheme. The scheme consists of three colors, the original color and two neighbors of the complement color.



48.5956, 60.7856, 84.0879



69.8184, 60.7856, 65.8106



48.4789, 60.7856, 51.5714

Square

The Square scheme is like the rectangle color scheme, but the four colors are evenly spaced on the color wheel.



69.8184, 60.7856, 65.8106



57.6439, 60.7856, 38.8273



47.2027, 60.7856, 66.5612



57.9060, 60.7856, 104.0774

Rectangle

The Rectangle color scheme consists of four colors that form a rectangle on the color wheel.



69.8184, 60.7856, 65.8106



65.2325, 60.7856, 44.1898



47.2027, 60.7856, 66.5612



50.9085, 60.7856, 94.4833

Sweetspot

The Sweet Spot groups the original color and five complimentary colors.



69.8198, 60.7883, 65.8118



86.5943, 86.7520, 94.7876



70.0205, 60.0796, 102.5138



18.2148, 18.0692, 19.7484



0.0000, 0.0000, 0.0000



20.3446, 21.4041, 23.3091

Same Dimension

The Same Dimension uses a secret algorithm to generate beautiful new colors.



69.8198, 60.7883, 65.8118



66.2089, 55.2802, 59.3251



70.9797, 66.5577, 55.5637



18.2148, 18.0692, 19.7484



22.1835, 11.3627, 4.3506



2.2037, 1.1238, 0.6540

Inverse Universe

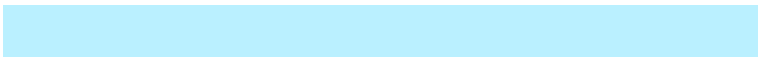
The Inverse Universe completely reimagines the original color for something new.



69.8198, 60.7883, 65.8118



66.2089, 55.2802, 59.3251



69.4764, 80.0103, 106.3895



18.2148, 18.0692, 19.7484



22.1835, 11.3627, 4.3506



2.2037, 1.1238, 0.6540

Previews

White Background



This preview shows how the XYZ color 69.8184, 60.7856, 65.8106 looks on a white background.

Color Contrast Check

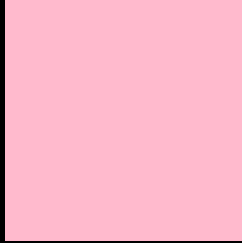
Large Text (above 18pt) WCAG AA × Fail

Any Text WCAG AA × Fail

Large Text (above 18pt) WCAG AAA × Fail

Any Text WCAG AAA × Fail

Black Background



This preview shows how the XYZ color 69.8184, 60.7856, 65.8106 looks on a black background.

Color Contrast Check

Large Text (above 18pt) WCAG AA ✓ Pass

Any Text WCAG AA ✓ Pass

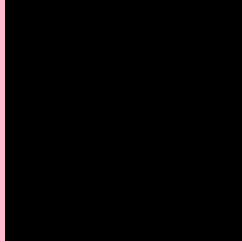
Large Text (above 18pt) WCAG AAA ✓ Pass

Any Text WCAG AAA ✓ Pass

If you want to check with other color combinations, try the [Color Contrast Checker](#).

XYZ 69.8184, 60.7856, 65.8106

Background



This preview shows how black text looks on a background with the XYZ color 69.8184, 60.7856, 65.8106.



This preview shows how white text looks on a background with the XYZ color 69.8184, 60.7856,

65.8106.

Color Blindness Simulation

Color vision deficiency is a very complex topic, and I could not describe the different causes any better than Wikipedia does, so if you want to learn more, you should check out their [article about color blindness](#).

Dichromacy



Original Color

69.8184, 60.7856, 65.8106

Protanopia

59.3122, 61.2138, 72.9793

Deuteranopia

62.3376, 60.8687, 64.9632



Tritanopia

69.5529, 61.0177, 63.3701

Trichromacy



Original Color

69.8184, 60.7856, 65.8106



Protanomaly

62.4646, 60.4829, 70.0102



Deuteranomaly

65.1159, 60.9477, 65.4588



Tritanomaly

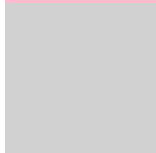
69.6710, 61.0649, 63.9918

Monochromacy



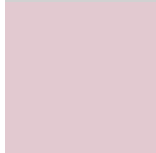
Original Color

69.8184, 60.7856, 65.8106



Achromatopsia

60.6036, 63.7597, 69.4343



Achromatomaly

63.6358, 62.4961, 68.3835

CSS Examples

Text

The CSS property to change the color of the text to XYZ 69.8184, 60.7856, 65.8106 is called "color". The color property can be set on classes, ids or directly on the HTML element.

This example shows how text in the color `rgb(255, 186, 205)` looks like.

```
.text, #text, p{  
    color:rgb(255, 186, 205)  
}
```

If you want to add a text shadow in that color use the text-shadow property, you can generate a text shadow directly with our [CSS Text Shadow Generator](#).

Here you see how black text with a 4 pixel rgb(255, 186, 205) colored shadow looks like.

```
.shadow{ text-shadow: 4px 4px 2px rgb(255, 186, 205) }
```

Border

The CSS property to change the border of an element to XYZ 69.8184, 60.7856, 65.8106 is called "border". The border property can be set on classes, ids or directly on the HTML element.

This example shows the color as border, it can be applied via the CSS property "border" or "border-color".

```
.border, #border, table{ border:4px solid rgb(255, 186, 205) }
```


If only the border color should be changed use the property `border-color`.

```
.border{ border-color:rgb(255, 186, 205) }
```

If you want to add a box shadow in that color use:

Here you see how a box with a 4 pixel `rgb(255, 186, 205)` colored shadow looks like.

```
.boxshadow{ -moz-box-shadow:4px 4px 4px  
4px rgb(255, 186, 205); -webkit-box-  
shadow:4px 4px 4px 4px rgb(255, 186, 205);  
box-shadow:4px 4px 4px 4px rgb(255, 186,  
205) }
```

Background

The CSS property to change the background color of an element to XYZ 69.8184, 60.7856, 65.8106 is called "background". The background property can be set on classes, ids or directly on the HTML element.

```
.background, #background, body{  
background: rgb(255, 186, 205) }
```

If only the background color should be changed can be used:

```
.background{ background-color: rgb(255,  
186, 205) }
```

This example shows the color as background, it is applied via the CSS property "background".

To optimize and compress your CSS code, you can use our [online CSS compressor and optimizer](#) based on csstidy. If you want to create a linear or radial gradient as background or border, check our [CSS Gradient Generator](#).

Hey! You found this booklet interesting? Support Converting Colors with the new Membership Option!

The pro membership hides all ads, plus gives you double the colors in the color bucket, and more awesome pro features!

[Learn more, Memberships starting at \\$2.50/m!](#)

**Follow me
on Twitter!**

@ConvertingColor