

Converting Colors

XYZ(69.9560, 71.6826, 66.0138)

Have a look what the booklet for
XYZ(69.9560, 71.6826, 66.0138)
contains.

XYZ(70.0656, 71.7228, 66.0282)	3
<i>Conversions</i>	4
<i>Details</i>	6
<i>Harmonies</i>	12
<i>Previews</i>	24
<i>Color Blindness Simulation</i>	28
<i>CSS Examples</i>	31

Color

**XYZ(70.0656, 71.7228,
66.0282)**

Conversions

Conversions Part 1

Format	Color
Hex	ECD9CA
RGB	236, 217, 202
RGB Percent	93%, 85%, 79%
CMY	0.0745, 0.1490, 0.2078
CMYK	0.00, 0.08, 0.14, 0.07
HSL	26°, 47%, 86%
HSV	26°, 14%, 93%
XYZ	70.0656, 71.7228, 66.0282
YIQ	220.9710, 16.1390, -0.6370

Conversions

Conversions Part 2

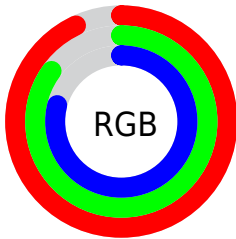
Format	Color
R _{YB}	236, 229, 202
Decimal	15522250
CIE Lab	87.83, 4.11, 9.74
CIE LCh	88, 10.572, 67.123
Yxy	71.7228, 0.3372, 0.3451
Android (android.graphics.Color)	4293712330 (0xFFECD9CA)
YUV	220.9710, -9.3527, 13.1804
Hunter-Lab	84.6893, -0.5288, 13.0569

Details

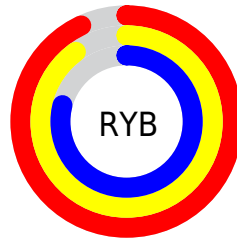
The XYZ color **70.0656, 71.7228, 66.0282** is a light color, and the websafe version is hex **CCCCCC**. A complement of this color would be **65.3537, 70.3243, 89.4870**, and the grayscale version is **68.7641, 72.3452, 78.7840**.

A 20% lighter version of the original color is **95.0500, 100.0000, 108.9000**, and **37.0880, 37.6821, 33.3356** is the 20% darker color. If you saturate the color by 10%, you get **64.2188, 64.1639, 51.3314**, and if you desaturate by 10%, it is **76.6152, 80.0021, 83.0693**.

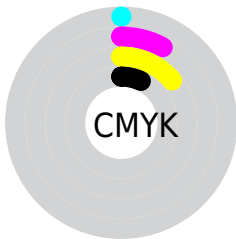
Distribution



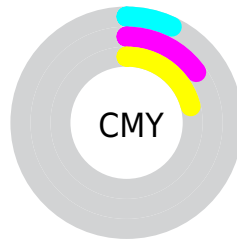
- Red (93%)
- Green (85%)
- Blue (79%)



- Red (93%)
- Yellow (90%)
- Blue (79%)



- Cyan (0%)
- Magenta (8%)
- Yellow (14%)
- Black (7%)



- Cyan (7%)
- Magenta (15%)
- Yellow (21%)

Brightness & Saturation Gradients

These gradients show how the XYZ color 70.0656, 71.7228, 66.0282 changes by changing the brightness by 10 percent. The first figure shows a shift by +10% for each color and the second figure -10%.

Similar to the brightness gradients but the following saturation gradients show a change of the XYZ color 70.0656, 71.7228, 66.0282 by changing the saturation by 10% instead.

70.0656, 71.7228,
66.0282

70.0656, 71.7228,
66.0282

450.0431,
466.5762, 464.8847

51.8598, 52.9323,
47.8387

118.3281,
121.6623, 115.1542

37.1172, 37.7487,
33.3401

149.1154,
153.5801, 146.9277

25.4723, 25.7877,
22.1138

184.8274,
190.6425, 184.0664

16.5599, 16.6649,
13.7415

225.8293,
233.2338, 226.9886

10.0146, 9.9959,
7.8044

272.4864,
281.7384, 276.1130

5.4710, 5.3962,
3.8841

325.1642,

2.5637, 2.4816,

336.5407, 331.8582

1.5620

384.2280,
398.0252, 394.6425

■ 0.9275, 0.8674,
0.2635

■ 0.0000, 0.0000,
0.0000

■ 70.0656, 71.7228,
66.0282

■ 70.0656, 71.7228,
66.0282

■ 64.2188, 64.1639,
51.3314

■ 76.6152, 80.0021,
83.0693

■ 59.0434, 57.2955,
38.8702

■ 83.8861, 89.0118,
102.5475

■ 54.5139, 51.0994,
28.5344

■ 88.4024, 96.5730,
108.5889

■ 50.6008, 45.5529,
20.2020

■ 47.2720, 40.6318,
13.7390

■ 44.4919, 36.3100,
8.9943

■ 42.2199, 32.5589,
5.7932

■ 40.4080, 29.3460,
3.9222

■ 39.5576, 27.7634,
3.2740

Harmonies

Analogous

The Analogous color harmony consists of three colors that are next to each other on the color wheel.



72.0951, 71.7228, 70.0382



70.0656, 71.7228, 66.0282



67.5731, 71.7228, 65.1546

Triad

The Triadic color harmony groups three colors that are evenly spaced from another and form a triangle on the color wheel.



70.0656, 71.7228, 66.0282



63.4884, 71.7228, 79.8222



71.1276, 71.7228, 89.6525

Complementary

The Complementary color scheme is a pair of colors which are on the opposite of each other on the color wheel.



70.0656, 71.7228, 66.0282



65.3537, 70.3243, 89.4870

Split Complementary

Split-complementary colors differ from the complementary color scheme. The scheme consists of three colors, the original color and two neighbors of the complement color.



68.7712, 71.7228, 92.6421



70.0656, 71.7228, 66.0282



64.3907, 71.7228, 86.7449

Square

The Square scheme is like the rectangle color scheme, but the four colors are evenly spaced on the color wheel.



70.0656, 71.7228, 66.0282



63.8158, 71.7228, 72.8382



66.3096, 71.7228, 91.5467



72.7187, 71.7228, 83.5966

Rectangle

The Rectangle color scheme consists of four colors that form a rectangle on the color wheel.



70.0656, 71.7228, 66.0282



65.9916, 71.7228, 66.4164



66.3096, 71.7228, 91.5467



70.3965, 71.7228, 91.0658

Sweetspot

The Sweet Spot groups the original color and five complimentary colors.



70.0676, 71.7260, 66.0297



91.6598, 95.7781, 99.8822



68.8002, 65.3096, 77.5738



19.4858, 20.3339, 21.0272



0.0000, 0.0000, 0.0000



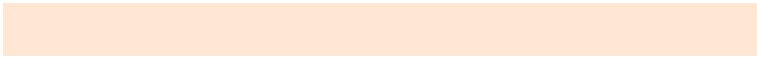
20.3446, 21.4041, 23.3091

Same Dimension

The Same Dimension uses a secret algorithm to generate beautiful new colors.



70.0676, 71.7260, 66.0297



81.5940, 83.0248, 73.7810



74.6005, 80.7918, 67.5407



15.6125, 16.1480, 15.8127



21.9290, 15.5522, 1.8461



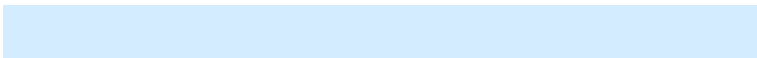
1.8164, 1.4101, 0.1764

Inverse Universe

The Inverse Universe completely reimagines the original color for something new.



65.3537, 70.3243, 89.4870



75.0585, 81.0809, 106.3019



61.1547, 61.9264, 88.0874



14.9292, 15.9449, 19.2131



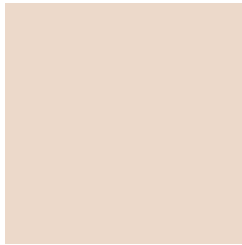
13.0141, 12.6752, 45.5036



1.1175, 1.1865, 3.6050

Previews

White Background



This preview shows how the XYZ color 70.0656, 71.7228, 66.0282 looks on a white background.

Color Contrast Check

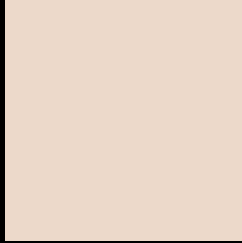
Large Text (above 18pt) WCAG AA × Fail

Any Text WCAG AA × Fail

Large Text (above 18pt) WCAG AAA × Fail

Any Text WCAG AAA × Fail

Black Background



This preview shows how the XYZ color 70.0656, 71.7228, 66.0282 looks on a black background.

Color Contrast Check

Large Text (above 18pt) WCAG AA ✓ Pass

Any Text WCAG AA ✓ Pass

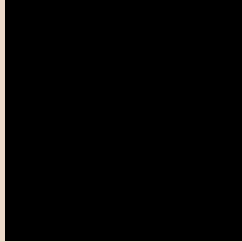
Large Text (above 18pt) WCAG AAA ✓ Pass

Any Text WCAG AAA ✓ Pass

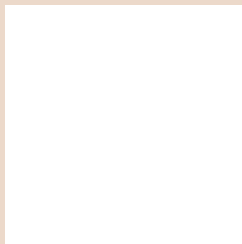
If you want to check with other color combinations, try the [Color Contrast Checker](#).

XYZ 70.0656, 71.7228, 66.0282

Background



This preview shows how black text looks on a background with the XYZ color 70.0656, 71.7228, 66.0282.

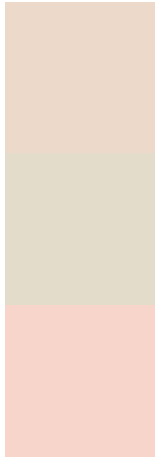


This preview shows how white text looks on a background with the XYZ color 70.0656, 71.7228,

Color Blindness Simulation

Color vision deficiency is a very complex topic, and I could not describe the different causes any better than Wikipedia does, so if you want to learn more, you should check out their [article about color blindness](#).

Dichromacy



Original Color

70.0656, 71.7228, 66.0282

Protanopia

68.3676, 71.9922, 66.7924

Deuteranopia

73.2851, 71.8568, 66.5071



Tritanopia

74.0124, 71.8269, 84.8260

Trichromacy



Original Color

70.0656, 71.7228, 66.0282

Protanomaly

69.0660, 71.9638, 66.7501

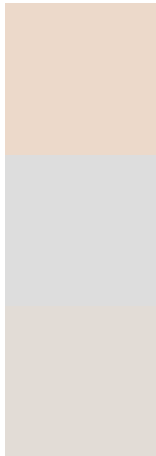
Deuteranomaly

72.1343, 71.6380, 66.5255

Tritanomaly

72.5614, 71.6112, 77.7081

Monochromacy



Original Color

70.0656, 71.7228, 66.0282

Achromatopsia

68.7264, 72.3055, 78.7407

Achromatomaly

69.0948, 72.2102, 73.9146

CSS Examples

Text

The CSS property to change the color of the text to XYZ 70.0656, 71.7228, 66.0282 is called "color". The color property can be set on classes, ids or directly on the HTML element.

This example shows how text in the color rgb(236, 217, 202) looks like.

```
.text, #text, p{  
    color:rgb(236, 217, 202)  
}
```

If you want to add a text shadow in that color use the text-shadow property, you can generate a text shadow directly with our [CSS Text Shadow Generator](#).

Here you see how black text with a 4 pixel rgb(236, 217, 202) colored shadow looks like.

```
.shadow{ text-shadow: 4px 4px 2px rgb(236, 217, 202) }
```

Border

The CSS property to change the border of an element to XYZ 70.0656, 71.7228, 66.0282 is called "border". The border property can be set on classes, ids or directly on the HTML element.

This example shows the color as border, it can be applied via the CSS property "border" or "border-color".

```
.border, #border, table{ border:4px solid rgb(236, 217, 202) }
```


If only the border color should be changed use the property `border-color`.

```
.border{ border-color:rgb(236, 217, 202) }
```

If you want to add a box shadow in that color use:

Here you see how a box with a 4 pixel `rgb(236, 217, 202)` colored shadow looks like.

```
.boxshadow{ -moz-box-shadow:4px 4px 4px  
4px rgb(236, 217, 202); -webkit-box-  
shadow:4px 4px 4px 4px rgb(236, 217, 202);  
box-shadow:4px 4px 4px 4px rgb(236, 217,  
202) }
```

Background

The CSS property to change the background color of an element to XYZ 70.0656, 71.7228, 66.0282 is called "background". The background property can be set on classes, ids or directly on the HTML element.

```
.background, #background, body{  
background: rgb(236, 217, 202) }
```

If only the background color should be changed can be used:

```
.background{ background-color: rgb(236,  
217, 202) }
```

This example shows the color as background, it is applied via the CSS property "background".

To optimize and compress your CSS code, you can use our [online CSS compressor and optimizer](#) based on csstidy. If you want to create a linear or radial gradient as background or border, check our [CSS Gradient Generator](#).

Hey! You found this booklet interesting? Support Converting Colors with the new Membership Option!

The pro membership hides all ads, plus gives you double the colors in the color bucket, and more awesome pro features!

[Learn more, Memberships starting at \\$2.50/m!](#)

**Follow me
on Twitter!**

@ConvertingColor