

Converting Colors

XYZ(69.9826, 69.8374, 65.2647)

Have a look what the booklet for
XYZ(69.9826, 69.8374, 65.2647)
contains.

XYZ(70.0213, 69.8293, 65.0462)	3
<i>Conversions</i>	4
<i>Details</i>	6
<i>Harmonies</i>	12
<i>Previews</i>	24
<i>Color Blindness Simulation</i>	28
<i>CSS Examples</i>	31

Color

**XYZ(70.0213, 69.8293,
65.0462)**

Conversions

Conversions Part 1

Format	Color
Hex	F0D4C9
RGB	240, 212, 201
RGB Percent	94%, 83%, 79%
CMY	0.0588, 0.1686, 0.2118
CMYK	0.00, 0.12, 0.16, 0.06
HSL	17°, 57%, 86%
HSV	17°, 16%, 94%
XYZ	70.0213, 69.8293, 65.0462
YIQ	219.1180, 20.2190, 2.5150

Conversions

Conversions Part 2

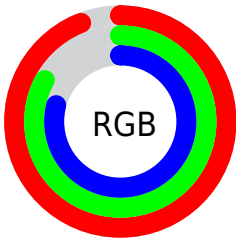
Format	Color
R _Y B	240, 216, 201
Decimal	15783113
CIE Lab	86.91, 7.99, 8.99
CIE LCh	87, 12.030, 48.390
Yxy	69.8293, 0.3417, 0.3408
Android (android.graphics.Color)	4293973193 (0xFFFF0D4C9)
YUV	219.1180, -8.9322, 18.3135
Hunter-Lab	83.5639, 3.3349, 12.3434

Details

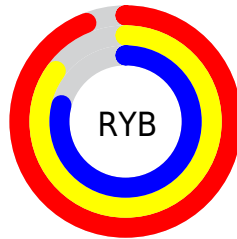
The XYZ color **70.0213, 69.8293, 65.0462** is a light color, and the websafe version is hex **FFCCCC**. A complement of this color would be **67.8344, 74.7457, 93.2908**, and the grayscale version is **67.4656, 70.9791, 77.2962**.

A 20% lighter version of the original color is **95.0500, 100.0000, 108.9000**, and **37.0906, 36.4109, 32.6769** is the 20% darker color. If you saturate the color by 10%, you get **63.3368, 60.6305, 49.9604**, and if you desaturate by 10%, it is **77.6104, 80.1299, 82.6114**.

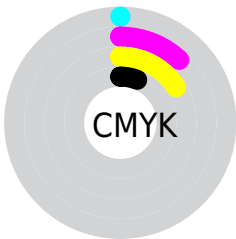
Distribution



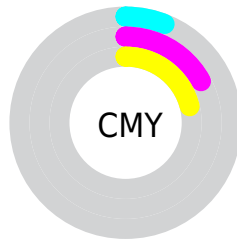
- Red (94%)
- Green (83%)
- Blue (79%)



- Red (94%)
- Yellow (85%)
- Blue (79%)



- Cyan (0%)
- Magenta (12%)
- Yellow (16%)
- Black (6%)





- Cyan (6%)
- Magenta (17%)
- Yellow (21%)

Brightness & Saturation Gradients


These gradients show how the XYZ color 70.0213, 69.8293, 65.0462 changes by changing the brightness by 10 percent. The first figure shows a shift by +10% for each color and the second figure -10%.

Similar to the brightness gradients but the following saturation gradients show a change of the XYZ color 70.0213, 69.8293, 65.0462 by changing the saturation by 10% instead.


 70.0213, 69.8293,
65.0462

 70.0213, 69.8293,
65.0462


449.8900,
459.9504, 461.2687

 51.8236, 51.3874,
47.0470


118.2652,
118.9653, 113.7302

 37.0882, 36.5170,
32.7182

149.0421,
150.4282, 145.2520

 25.4497, 24.8337,
21.6413


184.7428,
187.0001, 182.1185

 16.5430, 15.9532,
13.3978

225.7326,
229.0656, 224.7480

 10.0024, 9.4911,
7.5691

272.3768,
277.0090, 273.5593

 5.4629, 5.0628,
3.7367

325.0409,

 2.5588, 2.2842,

331.2146, 328.9708

1.4820

384.0902,
392.0670, 391.4011

■ 0.9250, 0.7653,
0.2045

■ 0.0000, 0.0000,
0.0000

■ 70.0213, 69.8293,
65.0462

■ 70.0213, 69.8293,
65.0462

■ 63.3368, 60.6305,
49.9604

■ 77.6104, 80.1299,
82.6114

■ 57.5163, 52.4873,
37.2372

■ 86.1311, 91.5580,
102.7568

■ 52.5246, 45.3637,
26.7571

■ 89.7455, 97.2654,
108.6518

■ 48.3219, 39.2184,
18.3880

■ 44.8644, 34.0069,
11.9842

■ 42.1041, 29.6809,
7.3809

■ 39.9862, 26.1876,
4.3861

■ 38.4457, 23.4670,
2.7617

■ 37.9857, 22.6259,
2.3652

Harmonies

Analogous

The Analogous color harmony consists of three colors that are next to each other on the color wheel.



71.6275, 69.8293, 71.2572



70.0213, 69.8293, 65.0462



67.4633, 69.8293, 61.8682

Triad

The Triadic color harmony groups three colors that are evenly spaced from another and form a triangle on the color wheel.



70.0213, 69.8293, 65.0462



61.2208, 69.8293, 72.9623



68.0887, 69.8293, 91.6710

Complementary

The Complementary color scheme is a pair of colors which are on the opposite of each other on the color wheel.



70.0213, 69.8293, 65.0462



67.8344, 74.7457, 93.2908

Split Complementary

Split-complementary colors differ from the complementary color scheme. The scheme consists of three colors, the original color and two neighbors of the complement color.



65.2899, 69.8293, 92.2082



70.0213, 69.8293, 65.0462



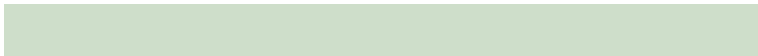
61.3775, 69.8293, 81.0159

Square

The Square scheme is like the rectangle color scheme, but the four colors are evenly spaced on the color wheel.



70.0213, 69.8293, 65.0462



62.4148, 69.8293, 66.2185



62.8492, 69.8293, 88.1905



70.4903, 69.8293, 86.7706

Rectangle

The Rectangle color scheme consists of four colors that form a rectangle on the color wheel.



70.0213, 69.8293, 65.0462



65.5859, 69.8293, 61.7367



62.8492, 69.8293, 88.1905



67.1616, 69.8293, 92.3799

Sweetspot

The Sweet Spot groups the original color and five complimentary colors.



70.0232, 69.8324, 65.0477



90.2140, 93.5047, 97.4948



71.0494, 65.9902, 83.5622



19.1687, 19.8241, 20.5377



0.0000, 0.0000, 0.0000



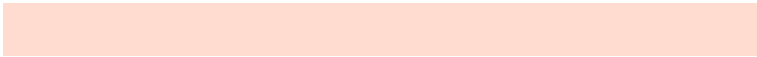
20.3446, 21.4041, 23.3091

Same Dimension

The Same Dimension uses a secret algorithm to generate beautiful new colors.



70.0232, 69.8324, 65.0477



78.0988, 77.0455, 69.4985



75.0265, 79.8389, 66.7154



16.1359, 16.4850, 16.4812



20.8908, 12.5797, 1.3271



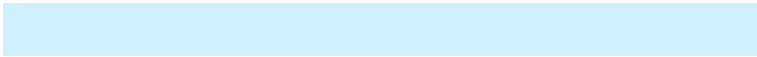
1.8193, 1.2092, 0.1375

Inverse Universe

The Inverse Universe completely reimagines the original color for something new.



67.8344, 74.7457, 93.2908



75.2093, 83.5262, 106.7660



62.8877, 64.8523, 91.6419



15.8485, 17.1311, 20.1929



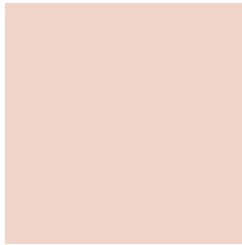
16.8332, 19.8907, 48.0800



1.4842, 1.8224, 4.0277

Previews

White Background



This preview shows how the XYZ color 70.0213, 69.8293, 65.0462 looks on a white background.

Color Contrast Check

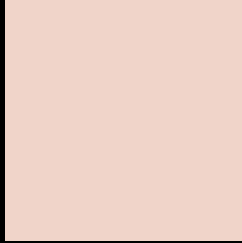
Large Text (above 18pt) WCAG AA × Fail

Any Text WCAG AA × Fail

Large Text (above 18pt) WCAG AAA × Fail

Any Text WCAG AAA × Fail

Black Background



This preview shows how the XYZ color 70.0213, 69.8293, 65.0462 looks on a black background.

Color Contrast Check

Large Text (above 18pt) WCAG AA ✓ Pass

Any Text WCAG AA ✓ Pass

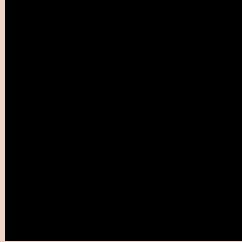
Large Text (above 18pt) WCAG AAA ✓ Pass

Any Text WCAG AAA ✓ Pass

If you want to check with other color combinations, try the [Color Contrast Checker](#).

XYZ 70.0213, 69.8293, 65.0462

Background



This preview shows how black text looks on a background with the XYZ color 70.0213, 69.8293, 65.0462.



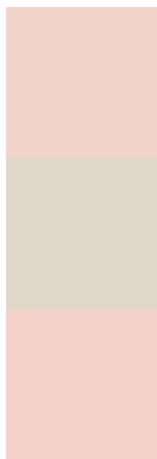
This preview shows how white text looks on a background with the XYZ color 70.0213, 69.8293,

65.0462.

Color Blindness Simulation

Color vision deficiency is a very complex topic, and I could not describe the different causes any better than Wikipedia does, so if you want to learn more, you should check out their [article about color blindness](#).

Dichromacy



Original Color

70.0213, 69.8293, 65.0462

Protanopia

66.7633, 69.9929, 67.1179

Deuteranopia

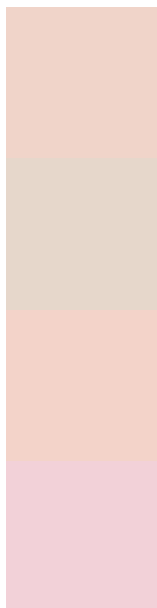
71.2454, 69.7227, 64.9611



Tritanopia

73.1086, 69.6027, 80.8156

Trichromacy



Original Color

70.0213, 69.8293, 65.0462

Protanomaly

67.7131, 69.7357, 66.3914

Deuteranomaly

70.7990, 69.8603, 65.0112

Tritanomaly

71.8131, 69.4360, 74.5833

Monochromacy



Original Color

70.0213, 69.8293, 65.0462

Achromatopsia

67.3311, 70.8376, 77.1421

Achromatomaly

68.1181, 70.1961, 72.2463

CSS Examples

Text

The CSS property to change the color of the text to XYZ 70.0213, 69.8293, 65.0462 is called "color". The color property can be set on classes, ids or directly on the HTML element.

This example shows how text in the color rgb(240, 212, 201) looks like.

```
.text, #text, p{  
    color:rgb(240, 212, 201)  
}
```

If you want to add a text shadow in that color use the text-shadow property, you can generate a text shadow directly with our [CSS Text Shadow Generator](#).

Here you see how black text with a 4 pixel rgb(240, 212, 201) colored shadow looks like.

```
.shadow{ text-shadow: 4px 4px 2px rgb(240, 212, 201) }
```

Border

The CSS property to change the border of an element to XYZ 70.0213, 69.8293, 65.0462 is called "border". The border property can be set on classes, ids or directly on the HTML element.

This example shows the color as border, it can be applied via the CSS property "border" or "border-color".

```
.border, #border, table{ border:4px solid rgb(240, 212, 201) }
```


If only the border color should be changed use the property `border-color`.

```
.border{ border-color:rgb(240, 212, 201) }
```

If you want to add a box shadow in that color use:

Here you see how a box with a 4 pixel `rgb(240, 212, 201)` colored shadow looks like.

```
.boxshadow{ -moz-box-shadow:4px 4px 4px  
4px rgb(240, 212, 201); -webkit-box-  
shadow:4px 4px 4px 4px rgb(240, 212, 201);  
box-shadow:4px 4px 4px 4px rgb(240, 212,  
201) }
```

Background

The CSS property to change the background color of an element to XYZ 70.0213, 69.8293, 65.0462 is called "background". The background property can be set on classes, ids or directly on the HTML element.

```
.background, #background, body{  
background: rgb(240, 212, 201) }
```

If only the background color should be changed can be used:

```
.background{ background-color: rgb(240,  
212, 201) }
```

This example shows the color as background, it is applied via the CSS property "background".

To optimize and compress your CSS code, you can use our [online CSS compressor and optimizer](#) based on csstidy. If you want to create a linear or radial gradient as background or border, check our [CSS Gradient Generator](#).

Hey! You found this booklet interesting? Support Converting Colors with the new Membership Option!

The pro membership hides all ads, plus gives you double the colors in the color bucket, and more awesome pro features!

[Learn more, Memberships starting at \\$2.50/m!](#)

**Follow me
on Twitter!**

@ConvertingColor