

Converting Colors

XYZ(70.0186, 70.5016, 67.8664)

Have a look what the booklet for
XYZ(70.0186, 70.5016, 67.8664)
contains.

XYZ(69.9911, 70.5054, 67.6776)	3
<i>Conversions</i>	4
<i>Details</i>	6
<i>Harmonies</i>	12
<i>Previews</i>	24
<i>Color Blindness Simulation</i>	28
<i>CSS Examples</i>	31

Color

**XYZ(69.9911, 70.5054,
67.6776)**

Conversions

Conversions Part 1

Format	Color
Hex	EDD6CD
RGB	237, 214, 205
RGB Percent	93%, 84%, 80%
CMY	0.0706, 0.1608, 0.1961
CMYK	0.00, 0.10, 0.14, 0.07
HSL	17°, 47%, 87%
HSV	17°, 14%, 93%
XYZ	69.9911, 70.5054, 67.6776
YIQ	219.8510, 16.5970, 2.0770

Conversions

Conversions Part 2

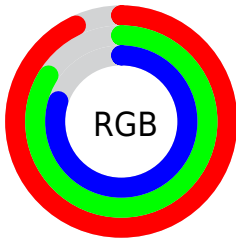
Format	Color
R _Y B	237, 218, 205
Decimal	15587021
CIE Lab	87.24, 6.50, 7.32
CIE LCh	87, 9.790, 48.426
Yxy	70.5054, 0.3362, 0.3387
Android (android.graphics.Color)	4293777101 (0xFFEDD6CD)
YUV	219.8510, -7.3215, 15.0397
Hunter-Lab	83.9675, 1.8456, 10.9896

Details

The XYZ color **69.9911, 70.5054, 67.6776** is a light color, and the websafe version is hex **CCCCCC**. A complement of this color would be **68.2061, 74.5791, 90.9220**, and the grayscale version is **67.9665, 71.5061, 77.8701**.

A 20% lighter version of the original color is **95.0500, 100.0000, 108.9000**, and **37.0401, 36.8544, 34.4395** is the 20% darker color. If you saturate the color by 10%, you get **63.2573, 61.2741, 52.3715**, and if you desaturate by 10%, it is **77.6129, 80.8177, 85.4193**.

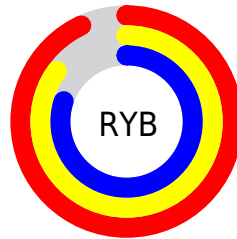
Distribution



Red (93%)

Green (84%)

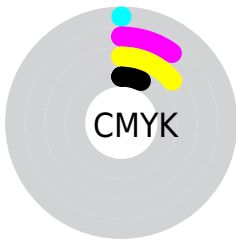
Blue (80%)



Red (93%)

Yellow (85%)

Blue (80%)

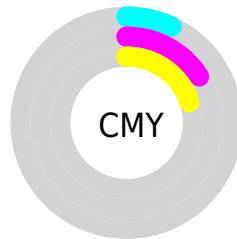


Cyan (0%)

Magenta (10%)

Yellow (14%)

Black (7%)



Cyan (7%)

Magenta (16%)

Yellow (20%)

Brightness & Saturation Gradients

These gradients show how the XYZ color 69.9911, 70.5054, 67.6776 changes by changing the brightness by 10 percent. The first figure shows a shift by +10% for each color and the second figure -10%.

Similar to the brightness gradients but the following saturation gradients show a change of the XYZ color 69.9911, 70.5054, 67.6776 by changing the saturation by 10% instead.

69.9911, 70.5054,
67.6776

69.9911, 70.5054,
67.6776

449.7857,
462.3226, 470.9199

51.7988, 51.9387,
49.1704

118.2224,
119.9292, 117.5407

37.0684, 36.9562,
34.3881

148.9922,
151.5551, 149.7336

25.4344, 25.1736,
22.9122

184.6851,
188.3028, 187.3256

16.5314, 16.2064,
14.3240

225.6667,
230.5567, 230.7352

9.9942, 9.6703,
8.2050

272.3021,
278.7012, 280.3809

5.4573, 5.1809,
4.1368

324.9569,

2.5555, 2.3538,

333.1208, 336.6812

1.7007

383.9963,
394.1998, 400.0547

■ 0.9233, 0.8020,
0.3612

■ 0.0000, 0.0000,
0.0000

■ 69.9911, 70.5054,
67.6776

■ 69.9911, 70.5054,
67.6776

■ 63.2573, 61.2741,
52.3715

■ 77.6129, 80.8177,
85.4193

■ 57.3724, 53.0791,
39.3896

■ 86.1483, 92.2353,
105.6924

■ 52.3031, 45.8861,
28.6184

■ 88.7354, 96.7447,
108.6045

■ 48.0113, 39.6557,
19.9332

■ 44.4557, 34.3454,
13.1966

■ 41.5911, 29.9094,
8.2545

■ 39.3662, 26.2978,
4.9294

■ 37.7215, 23.4543,
3.0060

■ 36.9140, 21.9819,
2.2974

Harmonies

Analogous

The Analogous color harmony consists of three colors that are next to each other on the color wheel.



71.2973, 70.5054, 72.8342



69.9911, 70.5054, 67.6776



67.9045, 70.5054, 65.0166

Triad

The Triadic color harmony groups three colors that are evenly spaced from another and form a triangle on the color wheel.



69.9911, 70.5054, 67.6776



62.7733, 70.5054, 74.2550



68.4209, 70.5054, 89.4229

Complementary

The Complementary color scheme is a pair of colors which are on the opposite of each other on the color wheel.



69.9911, 70.5054, 67.6776



68.2061, 74.5791, 90.9220

Split Complementary

Split-complementary colors differ from the complementary color scheme. The scheme consists of three colors, the original color and two neighbors of the complement color.



66.1298, 70.5054, 89.8573



69.9911, 70.5054, 67.6776



62.9044, 70.5054, 80.8417

Square

The Square scheme is like the rectangle color scheme, but the four colors are evenly spaced on the color wheel.



69.9911, 70.5054, 67.6776



63.7589, 70.5054, 68.6664



64.1211, 70.5054, 86.6389



70.3765, 70.5054, 85.4839

Rectangle

The Rectangle color scheme consists of four colors that form a rectangle on the color wheel.



69.9911, 70.5054, 67.6776



66.3673, 70.5054, 64.9085



64.1211, 70.5054, 86.6389



67.6634, 70.5054, 89.9916

Sweetspot

The Sweet Spot groups the original color and five complimentary colors.



69.9930, 70.5085, 67.6791



91.1570, 94.7725, 99.7146



70.8258, 67.2956, 82.9962



19.3588, 20.0798, 20.9849



0.0000, 0.0000, 0.0000



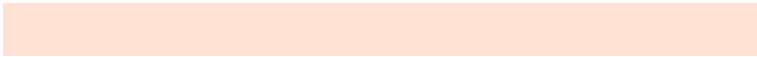
20.3446, 21.4041, 23.3091

Same Dimension

The Same Dimension uses a secret algorithm to generate beautiful new colors.



69.9930, 70.5085, 67.6791



80.5127, 80.3443, 75.0168



74.1125, 78.7475, 69.0523



15.4105, 15.7441, 15.7454



20.2492, 12.1925, 1.2861



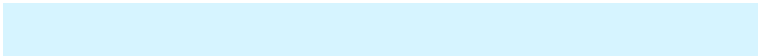
1.6691, 1.1154, 0.1273

Inverse Universe

The Inverse Universe completely reimagines the original color for something new.



68.2061, 74.5791, 90.9220



78.0463, 85.9590, 107.0860



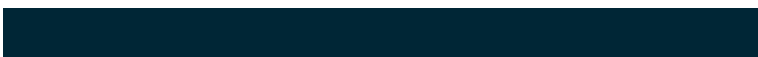
64.1242, 66.4152, 89.5613



15.1387, 16.3638, 19.2829



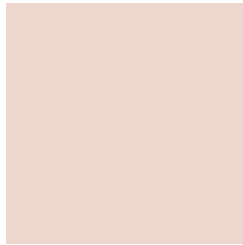
16.3424, 19.3318, 46.6130



1.3640, 1.6794, 3.6871

Previews

White Background



This preview shows how the XYZ color 69.9911, 70.5054, 67.6776 looks on a white background.

Color Contrast Check

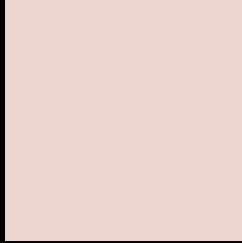
Large Text (above 18pt) WCAG AA × Fail

Any Text WCAG AA × Fail

Large Text (above 18pt) WCAG AAA × Fail

Any Text WCAG AAA × Fail

Black Background



This preview shows how the XYZ color 69.9911, 70.5054, 67.6776 looks on a black background.

Color Contrast Check

Large Text (above 18pt) WCAG AA ✓ Pass

Any Text WCAG AA ✓ Pass

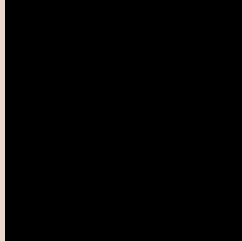
Large Text (above 18pt) WCAG AAA ✓ Pass

Any Text WCAG AAA ✓ Pass

If you want to check with other color combinations, try the [Color Contrast Checker](#).

XYZ 69.9911, 70.5054, 67.6776

Background



This preview shows how black text looks on a background with the XYZ color 69.9911, 70.5054, 67.6776.

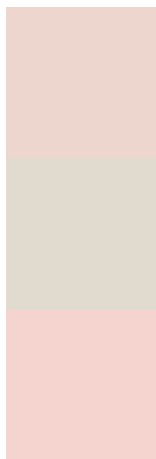


This preview shows how white text looks on a background with the XYZ color 69.9911, 70.5054,

Color Blindness Simulation

Color vision deficiency is a very complex topic, and I could not describe the different causes any better than Wikipedia does, so if you want to learn more, you should check out their [article about color blindness](#).

Dichromacy



Original Color

69.9911, 70.5054, 67.6776

Protanopia

67.3852, 70.6554, 69.1177

Deuteranopia

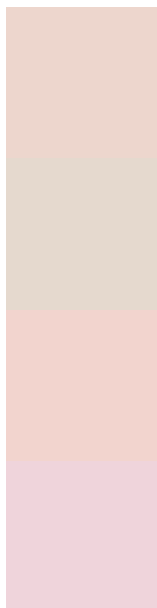
72.0910, 70.4572, 68.1925



Tritanopia

73.0946, 70.6598, 82.4593

Trichromacy



Original Color

69.9911, 70.5054, 67.6776

Protanomaly

68.2665, 70.7400, 68.4487

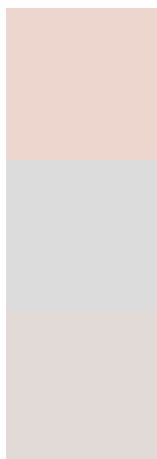
Deuteranomaly

71.3020, 70.4204, 68.2270

Tritanomaly

71.9263, 70.5522, 76.8448

Monochromacy



Original Color

69.9911, 70.5054, 67.6776

Achromatopsia

68.0267, 71.5694, 77.9390

Achromatomaly

68.7012, 71.2179, 74.4155

CSS Examples

Text

The CSS property to change the color of the text to XYZ 69.9911, 70.5054, 67.6776 is called "color". The color property can be set on classes, ids or directly on the HTML element.

This example shows how text in the color rgb(237, 214, 205) looks like.

```
.text, #text, p{  
    color:rgb(237, 214, 205)  
}
```

If you want to add a text shadow in that color use the text-shadow property, you can generate a text shadow directly with our [CSS Text Shadow Generator](#).

Here you see how black text with a 4 pixel rgb(237, 214, 205) colored shadow looks like.

```
.shadow{ text-shadow: 4px 4px 2px rgb(237, 214, 205) }
```

Border

The CSS property to change the border of an element to XYZ 69.9911, 70.5054, 67.6776 is called "border". The border property can be set on classes, ids or directly on the HTML element.

This example shows the color as border, it can be applied via the CSS property "border" or "border-color".

```
.border, #border, table{ border:4px solid rgb(237, 214, 205) }
```


If only the border color should be changed use the property `border-color`.

```
.border{ border-color:rgb(237, 214, 205) }
```

If you want to add a box shadow in that color use:

Here you see how a box with a 4 pixel `rgb(237, 214, 205)` colored shadow looks like.

```
.boxshadow{ -moz-box-shadow:4px 4px 4px  
4px rgb(237, 214, 205); -webkit-box-  
shadow:4px 4px 4px 4px rgb(237, 214, 205);  
box-shadow:4px 4px 4px 4px rgb(237, 214,  
205) }
```

Background

The CSS property to change the background color of an element to XYZ 69.9911, 70.5054, 67.6776 is called "background". The background property can be set on classes, ids or directly on the HTML element.

```
.background, #background, body{  
background: rgb(237, 214, 205) }
```

If only the background color should be changed can be used:

```
.background{ background-color: rgb(237,  
214, 205) }
```

This example shows the color as background, it is applied via the CSS property "background".

To optimize and compress your CSS code, you can use our [online CSS compressor and optimizer](#) based on csstidy. If you want to create a linear or radial gradient as background or border, check our [CSS Gradient Generator](#).

Hey! You found this booklet interesting? Support Converting Colors with the new Membership Option!

The pro membership hides all ads, plus gives you double the colors in the color bucket, and more awesome pro features!

[Learn more, Memberships starting at \\$2.50/m!](#)

**Follow me
on Twitter!**

@ConvertingColor