

Converting Colors

XYZ(70.1359, 71.2521, 73.6227)

Have a look what the booklet for
XYZ(70.1359, 71.2521, 73.6227)
contains.

XYZ(69.9722, 71.1226, 73.6584)	3
<i>Conversions</i>	4
<i>Details</i>	6
<i>Harmonies</i>	12
<i>Previews</i>	24
<i>Color Blindness Simulation</i>	28
<i>CSS Examples</i>	31

Color

**XYZ(69.9722, 71.1226,
73.6584)**

Conversions

Conversions Part 1

Format	Color
Hex	E8D8D6
RGB	232, 216, 214
RGB Percent	91%, 85%, 84%
CMY	0.0902, 0.1529, 0.1608
CMYK	0.00, 0.07, 0.08, 0.09
HSL	7°, 28%, 87%
HSV	7°, 8%, 91%
XYZ	69.9722, 71.1226, 73.6584
YIQ	220.5560, 10.1780, 2.7700

Conversions

Conversions Part 2

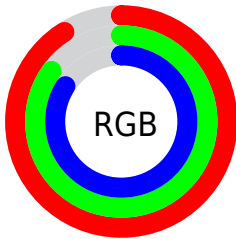
Format	Color
R _Y B	232, 216, 214
Decimal	15259862
CIE Lab	87.54, 5.16, 2.95
CIE LCh	88, 5.947, 29.793
Yxy	71.1226, 0.3258, 0.3312
Android (android.graphics.Color)	4293449942 (0xFFE8D8D6)
YUV	220.5560, -3.2321, 10.0364
Hunter-Lab	84.3342, 0.5168, 7.2494

Details

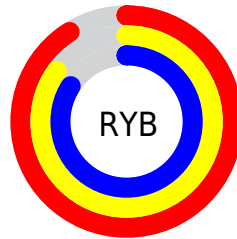
The XYZ color **69.9722, 71.1226, 73.6584** is a light color, and the websafe version is hex **CCCCCC**. A complement of this color would be **70.5937, 76.7146, 87.4316**, and the grayscale version is **68.4347, 71.9986, 78.4065**.

A 20% lighter version of the original color is **95.0500, 100.0000, 108.9000**, and **36.9074, 37.2230, 38.0404** is the 20% darker color. If you saturate the color by 10%, you get **62.2635, 60.1134, 57.4971**, and if you desaturate by 10%, it is **78.7697, 83.6323, 92.2663**.

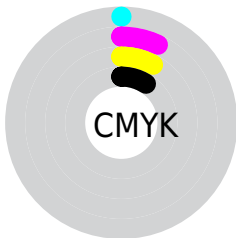
Distribution



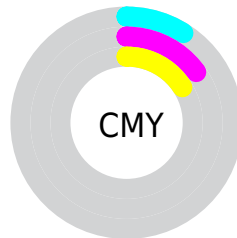
- Red (91%)
- Green (85%)
- Blue (84%)



- Red (91%)
- Yellow (85%)
- Blue (84%)



- Cyan (0%)
- Magenta (7%)
- Yellow (8%)
- Black (9%)



- Cyan (9%)
- Magenta (15%)
- Yellow (16%)

Brightness & Saturation Gradients

These gradients show how the XYZ color 69.9722, 71.1226, 73.6584 changes by changing the brightness by 10 percent. The first figure shows a shift by +10% for each color and the second figure -10%.

Similar to the brightness gradients but the following saturation gradients show a change of the XYZ color 69.9722, 71.1226, 73.6584 by changing the saturation by 10% instead.

69.9722, 71.1226,
73.6584

69.9722, 71.1226,
73.6584

449.7203,
464.4819, 492.4254

51.7834, 52.4423,
54.0194

118.1956,
120.8083, 126.1410

37.0560, 37.3577,
38.2239

148.9609,
152.5824, 159.8217

25.4247, 25.4846,
25.8533

184.6490,
189.4899, 199.0201

16.5242, 16.4384,
16.4892

225.6254,
231.9152, 244.1546

9.9890, 9.8349,
9.7129

272.2554,
280.2426, 295.6438

5.4539, 5.2897,
5.1059

324.9043,

2.5534, 2.4182,

334.8566, 353.9064

2.2497

383.9375,
396.1416, 419.3607

■ 0.9223, 0.8352,
0.7028

■ 0.0000, 0.0000,
0.0000

■ 69.9722, 71.1226,
73.6584

■ 69.9722, 71.1226,
73.6584

■ 62.2635, 60.1134,
57.4971

■ 78.7697, 83.6323,
92.2663

■ 55.5954, 50.5394,
43.6762

■ 87.0891, 95.8960,
108.5274

■ 49.9250, 42.3442,
32.0885

■ 45.2040, 35.4641,
22.6166

■ 41.3800, 29.8304,
15.1324

■ 38.3958, 25.3683,
9.4938

■ 36.1871, 21.9947,
5.5400

■ 34.6804, 19.6155,
3.0822

■ 33.7834, 18.1190,
1.8661

Harmonies

Analogous

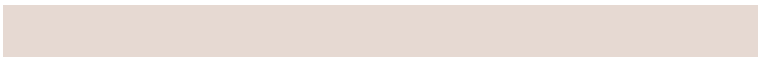
The Analogous color harmony consists of three colors that are next to each other on the color wheel.



70.3383, 71.1226, 77.4684



69.9722, 71.1226, 73.6584



68.9686, 71.1226, 70.9429

Triad

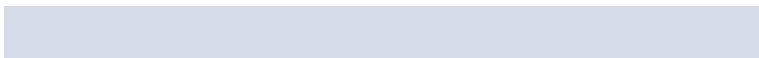
The Triadic color harmony groups three colors that are evenly spaced from another and form a triangle on the color wheel.



69.9722, 71.1226, 73.6584



65.2914, 71.1226, 73.6116



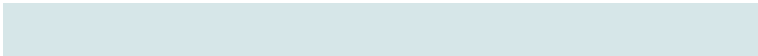
67.5901, 71.1226, 85.4401

Complementary

The Complementary color scheme is a pair of colors which are on the opposite of each other on the color wheel.



69.9722, 71.1226, 73.6584



70.5937, 76.7146, 87.4316

Split Complementary

Split-complementary colors differ from the complementary color scheme. The scheme consists of three colors, the original color and two neighbors of the complement color.



66.2494, 71.1226, 84.3230



69.9722, 71.1226, 73.6584



64.9335, 71.1226, 77.4125

Square

The Square scheme is like the rectangle color scheme, but the four colors are evenly spaced on the color wheel.



69.9722, 71.1226, 73.6584



66.2661, 71.1226, 70.9166



65.2818, 71.1226, 81.3497



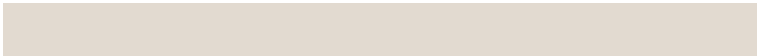
68.9515, 71.1226, 84.3526

Rectangle

The Rectangle color scheme consists of four colors that form a rectangle on the color wheel.



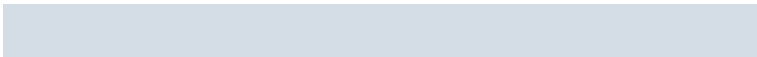
69.9722, 71.1226, 73.6584



68.0799, 71.1226, 70.0708



65.2818, 71.1226, 81.3497



67.1222, 71.1226, 85.3094

Sweetspot

The Sweet Spot groups the original color and five complimentary colors.



69.9742, 71.1257, 73.6599



92.8108, 96.8182, 104.1564



71.6373, 70.9744, 84.9349



19.8888, 20.7564, 22.3434



0.0000, 0.0000, 0.0000



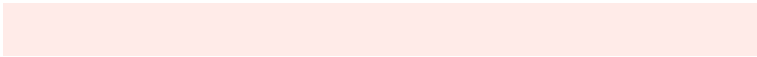
20.3446, 21.4041, 23.3091

Same Dimension

The Same Dimension uses a secret algorithm to generate beautiful new colors.



69.9742, 71.1257, 73.6599



85.4080, 86.2799, 88.5334



72.2884, 75.7542, 74.4313



14.5055, 14.6250, 14.9628



18.7230, 10.0201, 0.9473



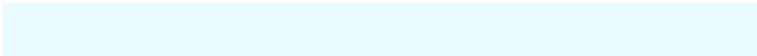
1.4269, 0.8271, 0.0844

Inverse Universe

The Inverse Universe completely reimagines the original color for something new.



70.5937, 76.7146, 87.4316



86.2952, 94.2846, 108.2583



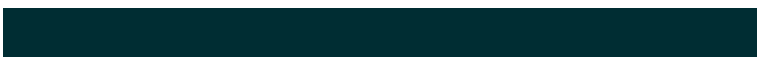
68.2073, 71.9419, 86.6361



14.6632, 16.0478, 18.4690



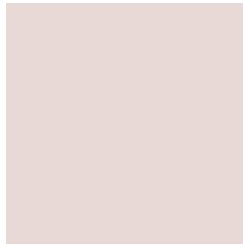
20.4201, 27.9022, 46.6926



1.5482, 2.1404, 3.4635

Previews

White Background



This preview shows how the XYZ color 69.9722, 71.1226, 73.6584 looks on a white background.

Color Contrast Check

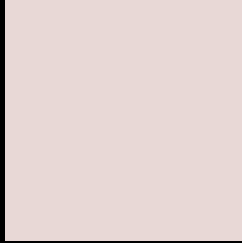
Large Text (above 18pt) WCAG AA × Fail

Any Text WCAG AA × Fail

Large Text (above 18pt) WCAG AAA × Fail

Any Text WCAG AAA × Fail

Black Background



This preview shows how the XYZ color 69.9722, 71.1226, 73.6584 looks on a black background.

Color Contrast Check

Large Text (above 18pt) WCAG AA ✓ Pass

Any Text WCAG AA ✓ Pass

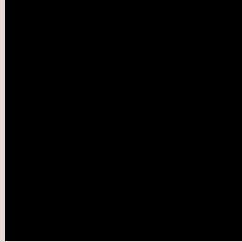
Large Text (above 18pt) WCAG AAA ✓ Pass

Any Text WCAG AAA ✓ Pass

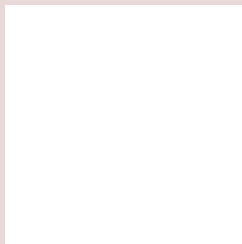
If you want to check with other color combinations, try the [Color Contrast Checker](#).

XYZ 69.9722, 71.1226, 73.6584

Background



This preview shows how black text looks on a background with the XYZ color 69.9722, 71.1226, 73.6584.



This preview shows how white text looks on a background with the XYZ color 69.9722, 71.1226,

73.6584.

Color Blindness Simulation

Color vision deficiency is a very complex topic, and I could not describe the different causes any better than Wikipedia does, so if you want to learn more, you should check out their [article about color blindness](#).

Dichromacy



Original Color

69.9722, 71.1226, 73.6584

Protanopia

68.0776, 70.8964, 74.3863

Deuteranopia

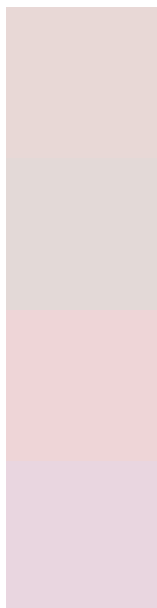
72.4272, 70.8705, 74.1520



Tritanopia

72.0089, 70.7941, 84.7323

Trichromacy



Original Color

69.9722, 71.1226, 73.6584

Protanomaly

68.7571, 70.8629, 74.3440

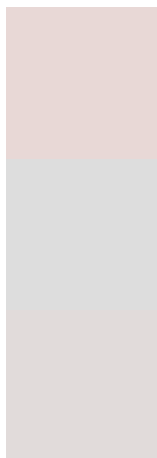
Deuteranomaly

71.3199, 70.6719, 74.1721

Tritanomaly

71.1054, 70.7986, 80.4388

Monochromacy



Original Color

69.9722, 71.1226, 73.6584

Achromatopsia

68.7264, 72.3055, 78.7407

Achromatomaly

69.0377, 71.7325, 76.5368

CSS Examples

Text

The CSS property to change the color of the text to XYZ 69.9722, 71.1226, 73.6584 is called "color". The color property can be set on classes, ids or directly on the HTML element.

This example shows how text in the color rgb(232, 216, 214) looks like.

```
.text, #text, p{  
    color:rgb(232, 216, 214)  
}
```

If you want to add a text shadow in that color use the text-shadow property, you can generate a text shadow directly with our [CSS Text Shadow Generator](#).

Here you see how black text with a 4 pixel rgb(232, 216, 214) colored shadow looks like.

```
.shadow{ text-shadow: 4px 4px 2px rgb(232, 216, 214) }
```

Border

The CSS property to change the border of an element to XYZ 69.9722, 71.1226, 73.6584 is called "border". The border property can be set on classes, ids or directly on the HTML element.

This example shows the color as border, it can be applied via the CSS property "border" or "border-color".

```
.border, #border, table{ border:4px solid rgb(232, 216, 214) }
```


If only the border color should be changed use the property `border-color`.

```
.border{ border-color:rgb(232, 216, 214) }
```

If you want to add a box shadow in that color use:

Here you see how a box with a 4 pixel `rgb(232, 216, 214)` colored shadow looks like.

```
.boxshadow{ -moz-box-shadow:4px 4px 4px  
4px rgb(232, 216, 214); -webkit-box-  
shadow:4px 4px 4px 4px rgb(232, 216, 214);  
box-shadow:4px 4px 4px 4px rgb(232, 216,  
214) }
```

Background

The CSS property to change the background color of an element to XYZ 69.9722, 71.1226, 73.6584 is called "background". The background property can be set on classes, ids or directly on the HTML element.

```
.background, #background, body{  
background: rgb(232, 216, 214) }
```

If only the background color should be changed can be used:

```
.background{ background-color: rgb(232,  
216, 214) }
```

This example shows the color as background, it is applied via the CSS property "background".

To optimize and compress your CSS code, you can use our [online CSS compressor and optimizer](#) based on csstidy. If you want to create a linear or radial gradient as background or border, check our [CSS Gradient Generator](#).

Hey! You found this booklet interesting? Support Converting Colors with the new Membership Option!

The pro membership hides all ads, plus gives you double the colors in the color bucket, and more awesome pro features!

[Learn more, Memberships starting at \\$2.50/m!](#)

**Follow me
on Twitter!**

@ConvertingColor