

Converting Colors

XYZ(70.1825, 69.3538, 71.7836)

Have a look what the booklet for
XYZ(70.1825, 69.3538, 71.7836)
contains.

XYZ(70.1030, 69.3465, 71.9777)	3
<i>Conversions</i>	4
<i>Details</i>	6
<i>Harmonies</i>	12
<i>Previews</i>	24
<i>Color Blindness Simulation</i>	28
<i>CSS Examples</i>	31

Color

**XYZ(70.1030, 69.3465,
71.9777)**

Conversions

Conversions Part 1

Format	Color
Hex	EDD3D4
RGB	237, 211, 212
RGB Percent	93%, 83%, 83%
CMY	0.0706, 0.1725, 0.1686
CMYK	0.00, 0.11, 0.11, 0.07
HSL	358°, 42%, 88%
HSV	358°, 11%, 93%
XYZ	70.1030, 69.3465, 71.9777
YIQ	218.8880, 15.1750, 5.8230

Conversions

Conversions Part 2

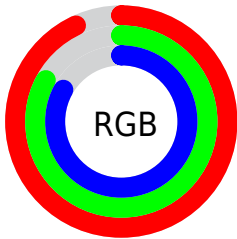
Format	Color
R _Y B	237, 211, 212
Decimal	15586260
CIE Lab	86.68, 9.19, 2.80
CIE LCh	87, 9.606, 16.958
Yxy	69.3465, 0.3316, 0.3280
Android (android.graphics.Color)	4293776340 (0xFFEDD3D4)
YUV	218.8880, -3.3958, 15.8842
Hunter-Lab	83.2745, 4.5362, 7.0453

Details

The XYZ color **70.1030, 69.3465, 71.9777** is a light color, and the websafe version is hex **FFCCCC**. A complement of this color would be **72.2912, 80.4752, 91.0840**, and the grayscale version is **67.2714, 70.7747, 77.0737**.

A 20% lighter version of the original color is **95.0500, 100.0000, 108.9000**, and **37.0303, 36.0350, 36.9020** is the 20% darker color. If you saturate the color by 10%, you get **61.9687, 57.3583, 56.0684**, and if you desaturate by 10%, it is **79.5152, 83.2392, 90.3169**.

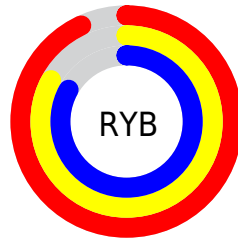
Distribution



Red (93%)

Green (83%)

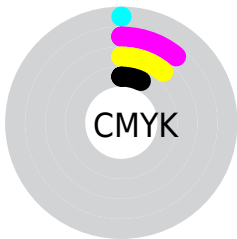
Blue (83%)



Red (93%)

Yellow (83%)

Blue (83%)

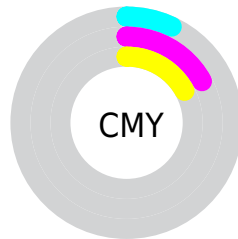


Cyan (0%)

Magenta (11%)

Yellow (11%)

Black (7%)



Cyan (7%)


Magenta (17%)


Yellow (17%)

Brightness & Saturation Gradients


These gradients show how the XYZ color 70.1030, 69.3465, 71.9777 changes by changing the brightness by 10 percent. The first figure shows a shift by +10% for each color and the second figure -10%.

Similar to the brightness gradients but the following saturation gradients show a change of the XYZ color 70.1030, 69.3465, 71.9777 by changing the saturation by 10% instead.


 70.1030, 69.3465,
71.9777

 70.1030, 69.3465,
71.9777


450.1723,
458.2521, 486.4394

 51.8904, 50.9940,
52.6537


118.3811,
118.2763, 123.7323

 37.1416, 36.2038,
37.1406


149.1773,
149.6224, 156.9999

 25.4914, 24.5916,
25.0197

184.8988,
186.0685, 195.7526

 16.5742, 15.7731,
15.8726

225.9109,
227.9989, 240.4087

 10.0248, 9.3637,
9.2807

272.5789,
275.7981, 291.3870

 5.4778, 4.9792,
4.8254

325.2683,

 2.5678, 2.2350,

329.8504, 349.1058

2.0882

384.3443,
390.5403, 413.9838

■ 0.9296, 0.7390,
0.6088

■ 0.0000, 0.0000,
0.0000

■ 70.1030, 69.3465,
71.9777

■ 70.1030, 69.3465,
71.9777

■ 61.9687, 57.3583,
56.0684

■ 79.5152, 83.2392,
90.3169

■ 55.0516, 47.1831,
42.4830

■ 88.7354, 96.7447,
108.6045

■ 49.2951, 38.7354,
31.1140

■ 44.6354, 31.9192,
21.8439

■ 41.0030, 26.6294,
14.5442

■ 38.3201, 22.7484,
9.0724

■ 36.4980, 20.1416,
5.2670

■ 35.4312, 18.6481,
2.9379

■ 34.9752, 18.0246,
1.8964

Harmonies

Analogous

The Analogous color harmony consists of three colors that are next to each other on the color wheel.



70.1821, 69.3465, 78.3145



70.1030, 69.3465, 71.9777



68.8848, 69.3465, 66.8744

Triad

The Triadic color harmony groups three colors that are evenly spaced from another and form a triangle on the color wheel.



70.1030, 69.3465, 71.9777



62.8244, 69.3465, 67.4237



64.9480, 69.3465, 88.1258

Complementary

The Complementary color scheme is a pair of colors which are on the opposite of each other on the color wheel.



70.1030, 69.3465, 71.9777



72.2912, 80.4752, 91.0840

Split Complementary

Split-complementary colors differ from the complementary color scheme. The scheme consists of three colors, the original color and two neighbors of the complement color.



63.0255, 69.3465, 84.8513



70.1030, 69.3465, 71.9777



61.8182, 69.3465, 72.7665

Square

The Square scheme is like the rectangle color scheme, but the four colors are evenly spaced on the color wheel.



70.1030, 69.3465, 71.9777



64.6678, 69.3465, 64.3487



61.8910, 69.3465, 79.1489



67.1716, 69.3465, 87.8850

Rectangle

The Rectangle color scheme consists of four colors that form a rectangle on the color wheel.



70.1030, 69.3465, 71.9777



67.6060, 69.3465, 64.7506



61.8910, 69.3465, 79.1489



64.2461, 69.3465, 87.3922

Sweetspot

The Sweet Spot groups the original color and five complimentary colors.



70.1049, 69.3496, 71.9792



91.4958, 94.7510, 101.9833



73.0749, 70.4876, 89.8757



19.3857, 19.9880, 21.4427



0.0000, 0.0000, 0.0000



20.3446, 21.4041, 23.3091

Same Dimension

The Same Dimension uses a secret algorithm to generate beautiful new colors.



70.1049, 69.3496, 71.9792



80.6569, 78.7571, 80.8474



72.9926, 75.3253, 72.3238



15.0889, 15.0634, 15.7532



19.1058, 9.8450, 1.0925



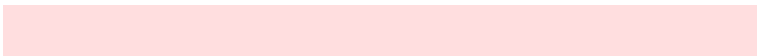
1.5085, 0.7764, 0.1293

Inverse Universe

The Inverse Universe completely reimagines the original color for something new.



70.1049, 69.3496, 71.9792



80.6569, 78.7571, 80.8474



69.1590, 73.9787, 90.7559



15.0889, 15.0634, 15.7532



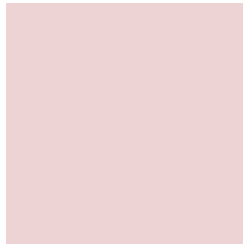
19.1058, 9.8450, 1.0925



1.5085, 0.7764, 0.1293

Previews

White Background



This preview shows how the XYZ color 70.1030, 69.3465, 71.9777 looks on a white background.

Color Contrast Check

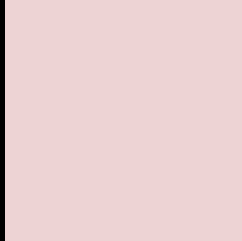
Large Text (above 18pt) WCAG AA × Fail

Any Text WCAG AA × Fail

Large Text (above 18pt) WCAG AAA × Fail

Any Text WCAG AAA × Fail

Black Background



This preview shows how the XYZ color 70.1030, 69.3465, 71.9777 looks on a black background.

Color Contrast Check

Large Text (above 18pt) WCAG AA ✓ Pass

Any Text WCAG AA ✓ Pass

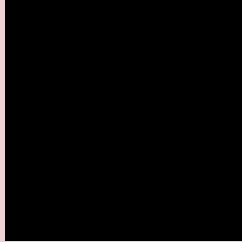
Large Text (above 18pt) WCAG AAA ✓ Pass

Any Text WCAG AAA ✓ Pass

If you want to check with other color combinations, try the [Color Contrast Checker](#).

XYZ 70.1030, 69.3465, 71.9777

Background



This preview shows how black text looks on a background with the XYZ color 70.1030, 69.3465, 71.9777.



This preview shows how white text looks on a background with the XYZ color 70.1030, 69.3465,

71.9777.

Color Blindness Simulation

Color vision deficiency is a very complex topic, and I could not describe the different causes any better than Wikipedia does, so if you want to learn more, you should check out their [article about color blindness](#).

Dichromacy



Original Color

70.1030, 69.3465, 71.9777

Protanopia

66.6404, 69.3902, 74.1713

Deuteranopia

70.8654, 69.3719, 71.9425



Tritanopia

71.9877, 69.3879, 80.8332

Trichromacy



Original Color

70.1030, 69.3465, 71.9777

Protanomaly

67.8627, 69.2791, 73.4138

Deuteranomaly

70.5269, 69.1974, 71.9266

Tritanomaly

71.2248, 69.4376, 77.3590

Monochromacy



Original Color

70.1030, 69.3465, 71.9777

Achromatopsia

67.3311, 70.8376, 77.1421

Achromatomaly

68.3146, 70.2384, 74.9225

CSS Examples

Text

The CSS property to change the color of the text to XYZ 70.1030, 69.3465, 71.9777 is called "color". The color property can be set on classes, ids or directly on the HTML element.

This example shows how text in the color `rgb(237, 211, 212)` looks like.

```
.text, #text, p{  
    color:rgb(237, 211, 212)  
}
```

If you want to add a text shadow in that color use the text-shadow property, you can generate a text shadow directly with our [CSS Text Shadow Generator](#).

Here you see how black text with a 4 pixel rgb(237, 211, 212) colored shadow looks like.

```
.shadow{ text-shadow: 4px 4px 2px rgb(237, 211, 212) }
```

Border

The CSS property to change the border of an element to XYZ 70.1030, 69.3465, 71.9777 is called "border". The border property can be set on classes, ids or directly on the HTML element.

This example shows the color as border, it can be applied via the CSS property "border" or "border-color".

```
.border, #border, table{ border:4px solid rgb(237, 211, 212) }
```


If only the border color should be changed use the property `border-color`.

```
.border{ border-color:rgb(237, 211, 212) }
```

If you want to add a box shadow in that color use:

Here you see how a box with a 4 pixel `rgb(237, 211, 212)` colored shadow looks like.

```
.boxshadow{ -moz-box-shadow:4px 4px 4px  
4px rgb(237, 211, 212); -webkit-box-  
shadow:4px 4px 4px 4px rgb(237, 211, 212);  
box-shadow:4px 4px 4px 4px rgb(237, 211,  
212) }
```

Background

The CSS property to change the background color of an element to XYZ 70.1030, 69.3465, 71.9777 is called "background". The background property can be set on classes, ids or directly on the HTML element.

```
.background, #background, body{  
background: rgb(237, 211, 212) }
```

If only the background color should be changed can be used:

```
.background{ background-color: rgb(237,  
211, 212) }
```

This example shows the color as background, it is applied via the CSS property "background".

To optimize and compress your CSS code, you can use our [online CSS compressor and optimizer](#) based on csstidy. If you want to create a linear or radial gradient as background or border, check our [CSS Gradient Generator](#).

Hey! You found this booklet interesting? Support Converting Colors with the new Membership Option!

The pro membership hides all ads, plus gives you double the colors in the color bucket, and more awesome pro features!

[Learn more, Memberships starting at \\$2.50/m!](#)

**Follow me
on Twitter!**

@ConvertingColor