

Converting Colors

XYZ(70.1935, 69.8810, 72.5669)

Have a look what the booklet for
XYZ(70.1935, 69.8810, 72.5669)
contains.

XYZ(70.1458, 69.7239, 72.7118)	3
<i>Conversions</i>	4
<i>Details</i>	6
<i>Harmonies</i>	12
<i>Previews</i>	24
<i>Color Blindness Simulation</i>	28
<i>CSS Examples</i>	31

Color

**XYZ(70.1458, 69.7239,
72.7118)**

Conversions

Conversions Part 1

Format	Color
Hex	ECD4D5
RGB	236, 212, 213
RGB Percent	93%, 83%, 84%
CMY	0.0745, 0.1686, 0.1647
CMYK	0.00, 0.10, 0.10, 0.07
HSL	358°, 39%, 88%
HSV	358°, 10%, 93%
XYZ	70.1458, 69.7239, 72.7118
YIQ	219.2900, 13.9830, 5.3990

Conversions

Conversions Part 2

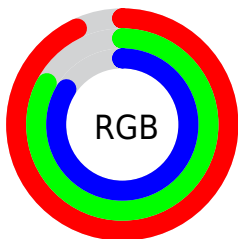
Format	Color
R _Y B	236, 212, 213
Decimal	15520981
CIE Lab	86.86, 8.48, 2.53
CIE LCh	87, 8.849, 16.628
Yxy	69.7239, 0.3300, 0.3280
Android (android.graphics.Color)	4293711061 (0xFFECD4D5)
YUV	219.2900, -3.1010, 14.6547
Hunter-Lab	83.5008, 3.8244, 6.8214

Details

The XYZ color **70.1458, 69.7239, 72.7118** is a light color, and the websafe version is hex **CCCCCC**. A complement of this color would be **72.1449, 79.9879, 90.2379**, and the grayscale version is **67.5489, 71.0667, 77.3917**.

A 20% lighter version of the original color is **95.0500, 100.0000, 108.9000**, and **37.0509, 36.2859, 37.3988** is the 20% darker color. If you saturate the color by 10%, you get **61.9984, 57.7074, 56.8048**, and if you desaturate by 10%, it is **79.5599, 83.6313, 91.0185**.

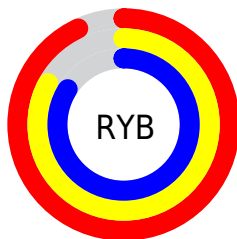
Distribution



Red (93%)

Green (83%)

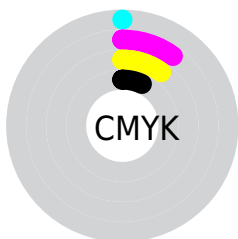
Blue (84%)



Red (93%)

Yellow (83%)

Blue (84%)

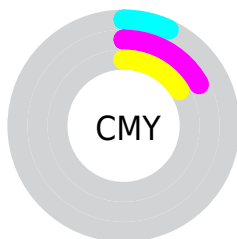


Cyan (0%)

Magenta (10%)

Yellow (10%)

Black (7%)



Cyan (7%)

Magenta (17%)

Yellow (16%)

Brightness & Saturation Gradients


These gradients show how the XYZ color 70.1458, 69.7239, 72.7118 changes by changing the brightness by 10 percent. The first figure shows a shift by +10% for each color and the second figure -10%.

Similar to the brightness gradients but the following saturation gradients show a change of the XYZ color 70.1458, 69.7239, 72.7118 by changing the saturation by 10% instead.


 70.1458, 69.7239,
72.7118

 70.1458, 69.7239,
72.7118


450.3202,
459.5800, 489.0593

 51.9254, 51.3015,
53.2500


118.4418,
118.8149, 124.7851

 37.1697, 36.4486,
37.6133

149.2481,
150.2523, 158.2336

 25.5132, 24.7809,
25.3832


184.9805,
186.7968, 197.1815

 16.5906, 15.9139,
16.1411

226.0042,
228.8329, 242.0472

 10.0365, 9.4632,
9.4686

272.6847,
276.7448, 293.2493

 5.4856, 5.0445,
4.9471

325.3873,

 2.5726, 2.2734,

330.9170, 351.2063

2.1581

384.4773,
391.7340, 416.3368

■ 0.9320, 0.7596,
0.6500

■ 0.0000, 0.0000,
0.0000

■ 70.1458, 69.7239,
72.7118

■ 70.1458, 69.7239,
72.7118

■ 61.9984, 57.7074,
56.8048

■ 79.5599, 83.6313,
91.0185

■ 55.0581, 47.4914,
43.1938

■ 88.4024, 96.5731,
108.5889

■ 49.2692, 38.9920,
31.7741

■ 44.5696, 32.1152,
22.4313

■ 40.8909, 26.7575,
15.0405

■ 38.1574, 22.8040,
9.4633

■ 36.2826, 20.1231,
5.5434

■ 35.1641, 18.5585,
3.0979

■ 34.6461, 17.8545,
1.9015

Harmonies

Analogous

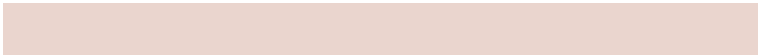
The Analogous color harmony consists of three colors that are next to each other on the color wheel.



70.2064, 69.7239, 78.5762



70.1458, 69.7239, 72.7118



69.0330, 69.7239, 67.9527

Triad

The Triadic color harmony groups three colors that are evenly spaced from another and form a triangle on the color wheel.



70.1458, 69.7239, 72.7118



63.4277, 69.7239, 68.3776



65.3570, 69.7239, 87.5190

Complementary

The Complementary color scheme is a pair of colors which are on the opposite of each other on the color wheel.



70.1458, 69.7239, 72.7118



72.1449, 79.9879, 90.2379

Split Complementary

Split-complementary colors differ from the complementary color scheme. The scheme consists of three colors, the original color and two neighbors of the complement color.



63.5826, 69.7239, 84.4815



70.1458, 69.7239, 72.7118



62.4845, 69.7239, 73.3194

Square

The Square scheme is like the rectangle color scheme, but the four colors are evenly spaced on the color wheel.



70.1458, 69.7239, 72.7118



65.1415, 69.7239, 65.5407



62.5406, 69.7239, 79.2160



67.4124, 69.7239, 87.3355

Rectangle

The Rectangle color scheme consists of four colors that form a rectangle on the color wheel.



70.1458, 69.7239, 72.7118



67.8571, 69.7239, 65.9562



62.5406, 69.7239, 79.2160



64.7087, 69.7239, 86.8344

Sweetspot

The Sweet Spot groups the original color and five complimentary colors.



70.1478, 69.7270, 72.7133



91.4996, 94.7525, 102.0033



72.8807, 70.7743, 89.1773



19.3867, 19.9884, 21.4480



0.0000, 0.0000, 0.0000



20.3446, 21.4041, 23.3091

Same Dimension

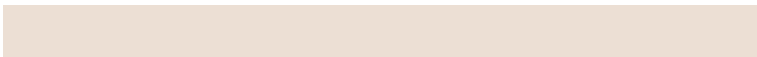
The Same Dimension uses a secret algorithm to generate beautiful new colors.



70.1478, 69.7270, 72.7133



81.6855, 80.2595, 82.9007



72.8120, 75.2572, 72.9795



15.0908, 15.0642, 15.7635



19.1090, 9.8463, 1.1092



1.5095, 0.7767, 0.1342

Inverse Universe

The Inverse Universe completely reimagines the original color for something new.



70.1478, 69.7270, 72.7133



81.6855, 80.2595, 82.9007



69.2736, 74.0144, 89.9928



15.0908, 15.0642, 15.7635



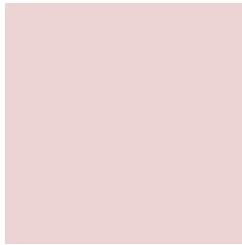
19.1090, 9.8463, 1.1092



1.5095, 0.7767, 0.1342

Previews

White Background



This preview shows how the XYZ color 70.1458, 69.7239, 72.7118 looks on a white background.

Color Contrast Check

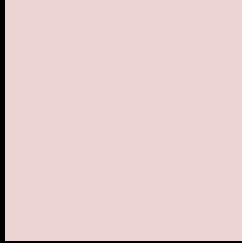
Large Text (above 18pt) WCAG AA × Fail

Any Text WCAG AA × Fail

Large Text (above 18pt) WCAG AAA × Fail

Any Text WCAG AAA × Fail

Black Background



This preview shows how the XYZ color 70.1458, 69.7239, 72.7118 looks on a black background.

Color Contrast Check

Large Text (above 18pt) WCAG AA ✓ Pass

Any Text WCAG AA ✓ Pass

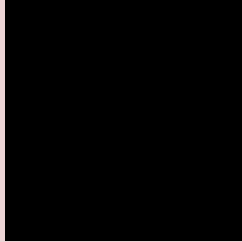
Large Text (above 18pt) WCAG AAA ✓ Pass

Any Text WCAG AAA ✓ Pass

If you want to check with other color combinations, try the [Color Contrast Checker](#).

XYZ 70.1458, 69.7239, 72.7118

Background



This preview shows how black text looks on a background with the XYZ color 70.1458, 69.7239, 72.7118.



This preview shows how white text looks on a background with the XYZ color 70.1458, 69.7239,

72.7118.

Color Blindness Simulation

Color vision deficiency is a very complex topic, and I could not describe the different causes any better than Wikipedia does, so if you want to learn more, you should check out their [article about color blindness](#).

Dichromacy



Original Color

70.1458, 69.7239, 72.7118

Protanopia

67.3317, 70.1132, 74.9502

Deuteranopia

70.9920, 69.4225, 72.6090



Tritanopia

72.0340, 69.7613, 81.6202

Trichromacy



Original Color

70.1458, 69.7239, 72.7118

Protanomaly

68.2447, 69.8381, 74.1732

Deuteranomaly

70.9011, 69.7433, 72.6757

Tritanomaly

71.2705, 69.8135, 78.1256

Monochromacy



Original Color

70.1458, 69.7239, 72.7118

Achromatopsia

67.3311, 70.8376, 77.1421

Achromatomaly

68.1316, 70.1290, 75.5910

CSS Examples

Text

The CSS property to change the color of the text to XYZ 70.1458, 69.7239, 72.7118 is called "color". The color property can be set on classes, ids or directly on the HTML element.

This example shows how text in the color rgb(236, 212, 213) looks like.

```
.text, #text, p{  
    color:rgb(236, 212, 213)  
}
```

If you want to add a text shadow in that color use the text-shadow property, you can generate a text shadow directly with our [CSS Text Shadow Generator](#).

Here you see how black text with a 4 pixel rgb(236, 212, 213) colored shadow looks like.

```
.shadow{ text-shadow: 4px 4px 2px rgb(236, 212, 213) }
```

Border

The CSS property to change the border of an element to XYZ 70.1458, 69.7239, 72.7118 is called "border". The border property can be set on classes, ids or directly on the HTML element.

This example shows the color as border, it can be applied via the CSS property "border" or "border-color".

```
.border, #border, table{ border:4px solid rgb(236, 212, 213) }
```


If only the border color should be changed use the property `border-color`.

```
.border{ border-color:rgb(236, 212, 213) }
```

If you want to add a box shadow in that color use:

Here you see how a box with a 4 pixel `rgb(236, 212, 213)` colored shadow looks like.

```
.boxshadow{ -moz-box-shadow:4px 4px 4px  
4px rgb(236, 212, 213); -webkit-box-  
shadow:4px 4px 4px 4px rgb(236, 212, 213);  
box-shadow:4px 4px 4px 4px rgb(236, 212,  
213) }
```

Background

The CSS property to change the background color of an element to XYZ 70.1458, 69.7239, 72.7118 is called "background". The background property can be set on classes, ids or directly on the HTML element.

```
.background, #background, body{  
background: rgb(236, 212, 213) }
```

If only the background color should be changed can be used:

```
.background{ background-color: rgb(236,  
212, 213) }
```

This example shows the color as background, it is applied via the CSS property "background".

To optimize and compress your CSS code, you can use our [online CSS compressor and optimizer](#) based on csstidy. If you want to create a linear or radial gradient as background or border, check our [CSS Gradient Generator](#).

Hey! You found this booklet interesting? Support Converting Colors with the new Membership Option!

The pro membership hides all ads, plus gives you double the colors in the color bucket, and more awesome pro features!

[Learn more, Memberships starting at \\$2.50/m!](#)

**Follow me
on Twitter!**

@ConvertingColor