

Converting Colors

XYZ(70.3553, 70.5381, 74.7669)

Have a look what the booklet for
XYZ(70.3553, 70.5381, 74.7669)
contains.

XYZ(70.3729, 70.5434, 74.8729)	3
<i>Conversions</i>	4
<i>Details</i>	6
<i>Harmonies</i>	12
<i>Previews</i>	24
<i>Color Blindness Simulation</i>	28
<i>CSS Examples</i>	31

Color

**XYZ(70.3729, 70.5434,
74.8729)**

Conversions

Conversions Part 1

Format	Color
Hex	EAD6D8
RGB	234, 214, 216
RGB Percent	92%, 84%, 85%
CMY	0.0823, 0.1608, 0.1529
CMYK	0.00, 0.09, 0.08, 0.08
HSL	354°, 32%, 88%
HSV	354°, 9%, 92%
XYZ	70.3729, 70.5434, 74.8729
YIQ	220.2080, 11.2780, 4.8620

Conversions

Conversions Part 2

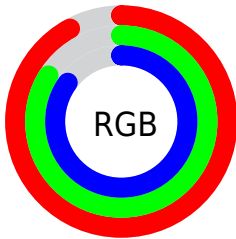
Format	Color
RYB	234, 214, 216
Decimal	15390424
CIELab	87.26, 7.24, 1.51
CIELCh	87, 7.392, 11.782
Yxy	70.5434, 0.3261, 0.3269
Android (android.graphics.Color)	4293580504 (0xFFEAD6D8)
YUV	220.2080, -2.0745, 12.0956
Hunter-Lab	83.9901, 2.5773, 5.9391

Details

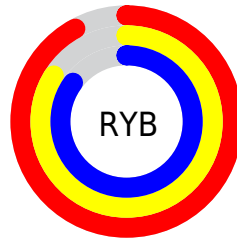
The XYZ color **70.3729, 70.5434, 74.8729** is a light color, and the websafe version is hex **CCCCCC**. A complement of this color would be **71.7225, 78.9697, 87.8103**, and the grayscale version is **68.1829, 71.7337, 78.1180**.

A 20% lighter version of the original color is **95.0500, 100.0000, 108.9000**, and **37.1913, 36.8345, 38.8678** is the 20% darker color. If you saturate the color by 10%, you get **62.3201, 58.5196, 59.6033**, and if you desaturate by 10%, it is **79.6295, 84.4144, 92.2679**.

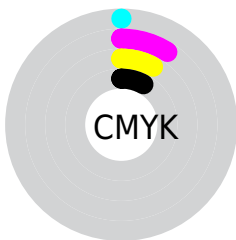
Distribution



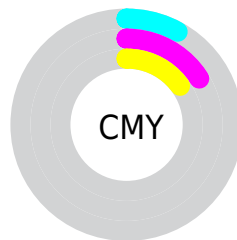
- Red (92%)
- Green (84%)
- Blue (85%)



- Red (92%)
- Yellow (84%)
- Blue (85%)



- Cyan (0%)
- Magenta (9%)
- Yellow (8%)
- Black (8%)



- Cyan (8%)
- Magenta (16%)
- Yellow (15%)

Brightness & Saturation Gradients

These gradients show how the XYZ color 70.3729, 70.5434, 74.8729 changes by changing the brightness by 10 percent. The first figure shows a shift by +10% for each color and the second figure -10%.

Similar to the brightness gradients but the following saturation gradients show a change of the XYZ color 70.3729, 70.5434, 74.8729 by changing the saturation by 10% instead.

70.3729, 70.5434,
74.8729

70.3729, 70.5434,
74.8729

451.1043,
462.4557, 496.7244

52.1113, 51.9697,
55.0077

118.7638,
119.9834, 127.8779

37.3184, 36.9809,
39.0092

149.6237,
151.6184, 161.8547

25.6289, 25.1927,
26.4590

185.4138,
188.3759, 201.3725

16.6775, 16.2207,
16.9385

226.4995,
230.6404, 246.8497

10.0987, 9.6804,
10.0292

273.2460,
278.7962, 298.7050

5.5272, 5.1876,
5.3124

326.0187,

2.5977, 2.3578,

333.2278, 357.3568

2.3698

385.1830,
394.3195, 423.2238

■ 0.9448, 0.8040,
0.7699

■ 0.0000, 0.0000,
0.0000

■ 70.3729, 70.5434,
74.8729

■ 70.3729, 70.5434,
74.8729

■ 62.3201, 58.5196,
59.6033

■ 79.6295, 84.4144,
92.2679

■ 55.4160, 48.2564,
46.3730

■ 87.7421, 96.2326,
108.5580

■ 49.6098, 39.6738,
35.0972

■ 44.8447, 32.6821,
25.6828

■ 41.0588, 27.1836,
18.0295

■ 38.1837, 23.0692,
12.0275

■ 36.1417, 20.2155,
7.5545

■ 34.8425, 18.4767,
4.4710

■ 34.1602, 17.6430,
2.6072

Harmonies

Analogous

The Analogous color harmony consists of three colors that are next to each other on the color wheel.



70.2727, 70.5434, 79.8397



70.3729, 70.5434, 74.8729



69.5713, 70.5434, 70.6102

Triad

The Triadic color harmony groups three colors that are evenly spaced from another and form a triangle on the color wheel.



70.3729, 70.5434, 74.8729



64.8482, 70.5434, 69.8945



66.0105, 70.5434, 86.2601

Complementary

The Complementary color scheme is a pair of colors which are on the opposite of each other on the color wheel.



70.3729, 70.5434, 74.8729



71.7225, 78.9697, 87.8103

Split Complementary

Split-complementary colors differ from the complementary color scheme. The scheme consists of three colors, the original color and two neighbors of the complement color.



64.5892, 70.5434, 83.3620



70.3729, 70.5434, 74.8729



63.9262, 70.5434, 73.8575

Square

The Square scheme is like the rectangle color scheme, but the four colors are evenly spaced on the color wheel.



70.3729, 70.5434, 74.8729



66.3696, 70.5434, 67.8200



63.8322, 70.5434, 78.7798



67.7338, 70.5434, 86.5608

Rectangle

The Rectangle color scheme consists of four colors that form a rectangle on the color wheel.



70.3729, 70.5434, 74.8729



68.6413, 70.5434, 68.6846



63.8322, 70.5434, 78.7798



65.4823, 70.5434, 85.5517

Sweetspot

The Sweet Spot groups the original color and five complimentary colors.



70.3749, 70.5465, 74.8744



91.5688, 94.7802, 102.3676



72.1786, 71.1926, 87.7801



19.4053, 19.9958, 21.5459



0.0000, 0.0000, 0.0000



20.3446, 21.4041, 23.3091

Same Dimension

The Same Dimension uses a secret algorithm to generate beautiful new colors.



70.3749, 70.5465, 74.8744



83.9698, 83.4045, 88.0507



72.1926, 74.5925, 74.2149



15.1266, 15.0785, 15.9517



19.1776, 9.8737, 1.4704



1.5266, 0.7836, 0.2243

Inverse Universe

The Inverse Universe completely reimagines the original color for something new.



70.3749, 70.5465, 74.8744



83.9698, 83.4045, 88.0507



69.7818, 74.6318, 88.5702



15.1266, 15.0785, 15.9517



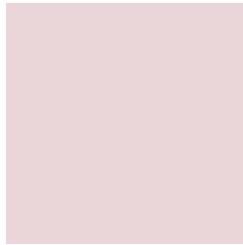
19.1776, 9.8737, 1.4704



1.5266, 0.7836, 0.2243

Previews

White Background



This preview shows how the XYZ color 70.3729, 70.5434, 74.8729 looks on a white background.

Color Contrast Check

Large Text (above 18pt) WCAG AA × Fail

Any Text WCAG AA × Fail

Large Text (above 18pt) WCAG AAA × Fail

Any Text WCAG AAA × Fail

Black Background



This preview shows how the XYZ color 70.3729, 70.5434, 74.8729 looks on a black background.

Color Contrast Check

Large Text (above 18pt) WCAG AA ✓ Pass

Any Text WCAG AA ✓ Pass

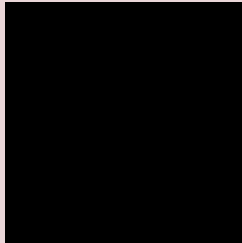
Large Text (above 18pt) WCAG AAA ✓ Pass

Any Text WCAG AAA ✓ Pass

If you want to check with other color combinations, try the [Color Contrast Checker](#).

XYZ 70.3729, 70.5434, 74.8729

Background



This preview shows how black text looks on a background with the XYZ color 70.3729, 70.5434, 74.8729.



This preview shows how white text looks on a background with the XYZ color 70.3729, 70.5434,

Color Blindness Simulation

Color vision deficiency is a very complex topic, and I could not describe the different causes any better than Wikipedia does, so if you want to learn more, you should check out their [article about color blindness](#).

Dichromacy



Original Color

70.3729, 70.5434, 74.8729

Protanopia

68.1577, 70.8927, 76.4210

Deuteranopia

71.8733, 70.5701, 74.7990



Tritanopia

72.2784, 70.5770, 83.9420

Trichromacy



Original Color

70.3729, 70.5434, 74.8729

Protanomaly

69.0158, 70.9664, 75.7060

Deuteranomaly

71.4488, 70.7235, 74.8510

Tritanomaly

71.5097, 70.6325, 80.3855

Monochromacy



Original Color

70.3729, 70.5434, 74.8729

Achromatopsia

68.0267, 71.5694, 77.9390

Achromatomaly

68.9089, 71.2648, 77.1414

CSS Examples

Text

The CSS property to change the color of the text to XYZ 70.3729, 70.5434, 74.8729 is called "color". The color property can be set on classes, ids or directly on the HTML element.

This example shows how text in the color rgb(234, 214, 216) looks like.

```
.text, #text, p{  
    color:rgb(234, 214, 216)  
}
```

If you want to add a text shadow in that color use the text-shadow property, you can generate a text shadow directly with our [CSS Text Shadow Generator](#).

Here you see how black text with a 4 pixel rgb(234, 214, 216) colored shadow looks like.

```
.shadow{ text-shadow: 4px 4px 2px rgb(234, 214, 216) }
```

Border

The CSS property to change the border of an element to XYZ 70.3729, 70.5434, 74.8729 is called "border". The border property can be set on classes, ids or directly on the HTML element.

This example shows the color as border, it can be applied via the CSS property "border" or "border-color".

```
.border, #border, table{ border:4px solid rgb(234, 214, 216) }
```


If only the border color should be changed use the property `border-color`.

```
.border{ border-color:rgb(234, 214, 216) }
```

If you want to add a box shadow in that color use:

Here you see how a box with a 4 pixel `rgb(234, 214, 216)` colored shadow looks like.

```
.boxshadow{ -moz-box-shadow:4px 4px 4px  
4px rgb(234, 214, 216); -webkit-box-  
shadow:4px 4px 4px 4px rgb(234, 214, 216);  
box-shadow:4px 4px 4px 4px rgb(234, 214,  
216) }
```

Background

The CSS property to change the background color of an element to XYZ 70.3729, 70.5434, 74.8729 is called "background". The background property can be set on classes, ids or directly on the HTML element.

```
.background, #background, body{  
background: rgb(234, 214, 216) }
```

If only the background color should be changed can be used:

```
.background{ background-color: rgb(234,  
214, 216) }
```

This example shows the color as background, it is applied via the CSS property "background".

To optimize and compress your CSS code, you can use our [online CSS compressor and optimizer](#) based on csstidy. If you want to create a linear or radial gradient as background or border, check our [CSS Gradient Generator](#).

Hey! You found this booklet interesting? Support Converting Colors with the new Membership Option!

The pro membership hides all ads, plus gives you double the colors in the color bucket, and more awesome pro features!

[Learn more, Memberships starting at \\$2.50/m!](#)

**Follow me
on Twitter!**

@ConvertingColor