

Converting Colors

XYZ(70.3801, 69.2508, 76.0601)

Have a look what the booklet for
XYZ(70.3801, 69.2508, 76.0601)
contains.

XYZ(70.5412, 69.4834, 76.0234)	3
<i>Conversions</i>	4
<i>Details</i>	6
<i>Harmonies</i>	12
<i>Previews</i>	24
<i>Color Blindness Simulation</i>	28
<i>CSS Examples</i>	31

Color

**XYZ(70.5412, 69.4834,
76.0234)**

Conversions

Conversions Part 1

Format	Color
Hex	ECD3DA
RGB	236, 211, 218
RGB Percent	93%, 83%, 85%
CMY	0.0745, 0.1725, 0.1451
CMYK	0.00, 0.11, 0.08, 0.07
HSL	343°, 40%, 88%
HSV	343°, 11%, 93%
XYZ	70.5412, 69.4834, 76.0234
YIQ	219.2730, 12.6530, 7.4770

Conversions

Conversions Part 2

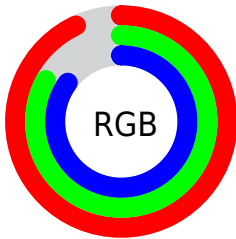
Format	Color
R _Y B	236, 211, 218
Decimal	15520730
CIE Lab	86.74, 9.84, -0.29
CIE LCh	87, 9.841, 358.331
Yxy	69.4834, 0.3265, 0.3216
Android (android.graphics.Color)	4293710810 (0xFFECD3DA)
YUV	219.2730, -0.6276, 14.6696
Hunter-Lab	83.3567, 5.1827, 4.2757

Details

The XYZ color **70.5412, 69.4834, 76.0234** is a light color, and the websafe version is hex **FFCCCC**. A complement of this color would be **71.0049, 79.4986, 85.7350**, and the grayscale version is **67.5212, 71.0375, 77.3599**.

A 20% lighter version of the original color is **95.0500, 100.0000, 108.9000**, and **37.3217, 36.1246, 39.6560** is the 20% darker color. If you saturate the color by 10%, you get **62.9923, 57.7634, 63.0918**, and if you desaturate by 10%, it is **79.1829, 83.0222, 90.4460**.

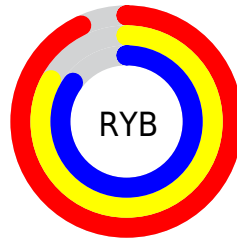
Distribution



Red (93%)

Green (83%)

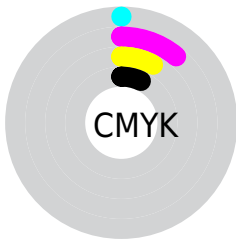
Blue (85%)



Red (93%)

Yellow (83%)

Blue (85%)

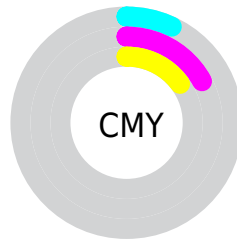


Cyan (0%)

Magenta (11%)

Yellow (8%)

Black (7%)



Cyan (7%)

Magenta (17%)

Yellow (15%)

Brightness & Saturation Gradients

These gradients show how the XYZ color 70.5412, 69.4834, 76.0234 changes by changing the brightness by 10 percent. The first figure shows a shift by +10% for each color and the second figure -10%.

Similar to the brightness gradients but the following saturation gradients show a change of the XYZ color 70.5412, 69.4834, 76.0234 by changing the saturation by 10% instead.

70.5412, 69.4834,
76.0234

70.5412, 69.4834,
76.0234

451.6848,
458.7340, 500.7768

52.2491, 51.1055,
55.9449

119.0023,
118.4718, 129.5204

37.4287, 36.2926,
39.7551

149.9019,
149.8510, 163.7760

25.7148, 24.6602,
27.0353

185.7348,
186.3328, 203.5943

16.7420, 15.8241,
17.3671

226.8662,
228.3015, 249.3940

10.1448, 9.3998,
10.3318

273.6616,
276.1416, 301.5935

5.5581, 5.0028,
5.5110

326.4863,

2.6164, 2.2489,

330.2375, 360.6115

2.4862

385.7055,
390.9735, 426.8664

■ 0.9543, 0.7465,
0.8328

■ 0.0000, 0.0000,
0.0000

■ 70.5412, 69.4834,
76.0234

■ 70.5412, 69.4834,
76.0234

■ 62.9923, 57.7634,
63.0918

■ 79.1829, 83.0222,
90.4460

■ 56.4860, 47.7756,
51.5984

■ 87.9217, 96.3807,
106.0575

■ 50.9771, 39.4400,
41.4933

■ 88.4024, 96.5730,
108.5889

■ 46.4146, 32.6666,
32.7225

■ 42.7427, 27.3569,
25.2278

■ 39.8998, 23.4010,
18.9468

■ 37.8157, 20.6734,
13.8111

■ 36.4079, 19.0246,
9.7444

■ 35.5773, 18.2270,
6.8054

Harmonies

Analogous

The Analogous color harmony consists of three colors that are next to each other on the color wheel.



69.8603, 69.4834, 82.4704



70.5412, 69.4834, 76.0234



69.9935, 69.4834, 69.8282

Triad

The Triadic color harmony groups three colors that are evenly spaced from another and form a triangle on the color wheel.



70.5412, 69.4834, 76.0234



63.9745, 69.4834, 65.0908



63.7573, 69.4834, 86.9025

Complementary

The Complementary color scheme is a pair of colors which are on the opposite of each other on the color wheel.



70.5412, 69.4834, 76.0234



71.0049, 79.4986, 85.7350

Split Complementary

Split-complementary colors differ from the complementary color scheme. The scheme consists of three colors, the original color and two neighbors of the complement color.



62.2419, 69.4834, 81.7986



70.5412, 69.4834, 76.0234



62.3652, 69.4834, 69.2270

Square

The Square scheme is like the rectangle color scheme, but the four colors are evenly spaced on the color wheel.



70.5412, 69.4834, 76.0234



66.1702, 69.4834, 63.7389



61.7381, 69.4834, 75.2890



65.9138, 69.4834, 88.9721

Rectangle

The Rectangle color scheme consists of four colors that form a rectangle on the color wheel.



70.5412, 69.4834, 76.0234



69.0124, 69.4834, 66.6221



61.7381, 69.4834, 75.2890



63.1579, 69.4834, 85.4708

Sweetspot

The Sweet Spot groups the original color and five complimentary colors.



70.5432, 69.4865, 76.0249



91.7835, 94.8660, 103.4981



70.7234, 69.2923, 89.0048



19.4630, 20.0189, 21.8498



0.0000, 0.0000, 0.0000



20.3446, 21.4041, 23.3091

Same Dimension

The Same Dimension uses a secret algorithm to generate beautiful new colors.



70.5432, 69.4865, 76.0249



81.7634, 79.1997, 86.6739



71.0149, 71.8644, 71.7601



15.2387, 15.1233, 16.5425



19.6581, 10.0659, 4.0011



1.5834, 0.8063, 0.5237

Inverse Universe

The Inverse Universe completely reimagines the original color for something new.



70.5432, 69.4865, 76.0249



81.7634, 79.1997, 86.6739



70.4661, 76.8259, 90.4725



15.2387, 15.1233, 16.5425



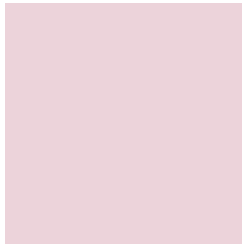
19.6581, 10.0659, 4.0011



1.5834, 0.8063, 0.5237

Previews

White Background



This preview shows how the XYZ color 70.5412, 69.4834, 76.0234 looks on a white background.

Color Contrast Check

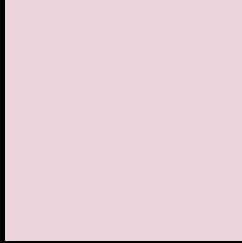
Large Text (above 18pt) WCAG AA × Fail

Any Text WCAG AA × Fail

Large Text (above 18pt) WCAG AAA × Fail

Any Text WCAG AAA × Fail

Black Background



This preview shows how the XYZ color 70.5412, 69.4834, 76.0234 looks on a black background.

Color Contrast Check

Large Text (above 18pt) WCAG AA ✓ Pass

Any Text WCAG AA ✓ Pass

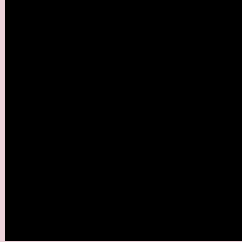
Large Text (above 18pt) WCAG AAA ✓ Pass

Any Text WCAG AAA ✓ Pass

If you want to check with other color combinations, try the [Color Contrast Checker](#).

XYZ 70.5412, 69.4834, 76.0234

Background



This preview shows how black text looks on a background with the XYZ color 70.5412, 69.4834, 76.0234.



This preview shows how white text looks on a background with the XYZ color 70.5412, 69.4834,

Color Blindness Simulation

Color vision deficiency is a very complex topic, and I could not describe the different causes any better than Wikipedia does, so if you want to learn more, you should check out their [article about color blindness](#).

Dichromacy



Original Color

70.5412, 69.4834, 76.0234

Protanopia

67.1222, 69.5478, 78.2930

Deuteranopia

70.9614, 69.3323, 75.9721



Tritanopia

71.6991, 69.5887, 81.6045

Trichromacy



Original Color

70.5412, 69.4834, 76.0234

Protanomaly

68.3289, 69.4292, 77.5100

Deuteranomaly

70.6265, 69.1597, 75.9564

Tritanomaly

71.2909, 69.4254, 79.4550

Monochromacy



Original Color

70.5412, 69.4834, 76.0234

Achromatopsia

67.3311, 70.8376, 77.1421

Achromatomaly

68.3934, 70.2338, 76.9696

CSS Examples

Text

The CSS property to change the color of the text to XYZ 70.5412, 69.4834, 76.0234 is called "color". The color property can be set on classes, ids or directly on the HTML element.

This example shows how text in the color `rgb(236, 211, 218)` looks like.

```
.text, #text, p{  
    color:rgb(236, 211, 218)  
}
```

If you want to add a text shadow in that color use the text-shadow property, you can generate a text shadow directly with our [CSS Text Shadow Generator](#).

Here you see how black text with a 4 pixel rgb(236, 211, 218) colored shadow looks like.

```
.shadow{ text-shadow: 4px 4px 2px rgb(236, 211, 218) }
```

Border

The CSS property to change the border of an element to XYZ 70.5412, 69.4834, 76.0234 is called "border". The border property can be set on classes, ids or directly on the HTML element.

This example shows the color as border, it can be applied via the CSS property "border" or "border-color".

```
.border, #border, table{ border:4px solid rgb(236, 211, 218) }
```


If only the border color should be changed use the property `border-color`.

```
.border{ border-color:rgb(236, 211, 218) }
```

If you want to add a box shadow in that color use:

Here you see how a box with a 4 pixel `rgb(236, 211, 218)` colored shadow looks like.

```
.boxshadow{ -moz-box-shadow:4px 4px 4px  
4px rgb(236, 211, 218); -webkit-box-  
shadow:4px 4px 4px 4px rgb(236, 211, 218);  
box-shadow:4px 4px 4px 4px rgb(236, 211,  
218) }
```

Background

The CSS property to change the background color of an element to XYZ 70.5412, 69.4834, 76.0234 is called "background". The background property can be set on classes, ids or directly on the HTML element.

```
.background, #background, body{  
background: rgb(236, 211, 218) }
```

If only the background color should be changed can be used:

```
.background{ background-color: rgb(236,  
211, 218) }
```

This example shows the color as background, it is applied via the CSS property "background".

To optimize and compress your CSS code, you can use our [online CSS compressor and optimizer](#) based on csstidy. If you want to create a linear or radial gradient as background or border, check our [CSS Gradient Generator](#).

Hey! You found this booklet interesting? Support Converting Colors with the new Membership Option!

The pro membership hides all ads, plus gives you double the colors in the color bucket, and more awesome pro features!

[Learn more, Memberships starting at \\$2.50/m!](#)

**Follow me
on Twitter!**

@ConvertingColor