

Converting Colors

XYZ(70.4710, 70.9724, 79.7911)

Have a look what the booklet for
XYZ(70.4710, 70.9724, 79.7911)
contains.

XYZ(70.2528, 70.7516, 79.7657)	3
<i>Conversions</i>	4
<i>Details</i>	6
<i>Harmonies</i>	12
<i>Previews</i>	24
<i>Color Blindness Simulation</i>	28
<i>CSS Examples</i>	31

Color

**XYZ(70.2528, 70.7516,
79.7657)**

Conversions

Conversions Part 1

Format	Color
Hex	E6D7DF
RGB	230, 215, 223
RGB Percent	90%, 84%, 87%
CMY	0.0980, 0.1568, 0.1255
CMYK	0.00, 0.07, 0.03, 0.10
HSL	328°, 23%, 87%
HSV	328°, 7%, 90%
XYZ	70.2528, 70.7516, 79.7657
YIQ	220.3970, 6.3720, 5.6680

Conversions

Conversions Part 2

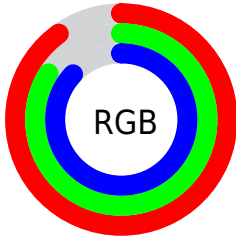
Format	Color
R _Y B	230, 215, 223
Decimal	15128543
CIE Lab	87.36, 6.54, -2.08
CIE LCh	87, 6.864, 342.358
Yxy	70.7516, 0.3182, 0.3205
Android (android.graphics.Color)	4293318623 (0xFFE6D7DF)
YUV	220.3970, 1.2833, 8.4218
Hunter-Lab	84.1140, 1.8855, 2.6548

Details

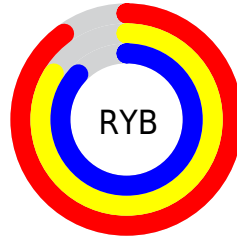
The XYZ color **70.2528, 70.7516, 79.7657** is a light color, and the websafe version is hex **CCCCCC**. A complement of this color would be **69.5086, 76.3164, 80.1780**, and the grayscale version is **68.2947, 71.8513, 78.2461**.

A 20% lighter version of the original color is **95.0500, 100.0000, 108.9000**, and **37.0942, 36.9674, 42.2261** is the 20% darker color. If you saturate the color by 10%, you get **63.4015, 59.2917, 70.5658**, and if you desaturate by 10%, it is **78.0233, 83.9010, 89.7266**.

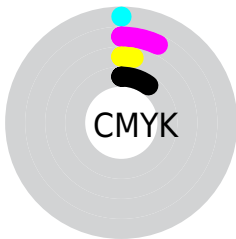
Distribution



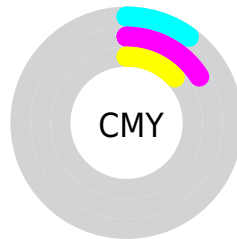
- Red (90%)
- Green (84%)
- Blue (87%)



- Red (90%)
- Yellow (84%)
- Blue (87%)



- Cyan (0%)
- Magenta (7%)
- Yellow (3%)
- Black (10%)



- Cyan (10%)
- Magenta (16%)
- Yellow (13%)

Brightness & Saturation Gradients

These gradients show how the XYZ color 70.2528, 70.7516, 79.7657 changes by changing the brightness by 10 percent. The first figure shows a shift by +10% for each color and the second figure -10%.

Similar to the brightness gradients but the following saturation gradients show a change of the XYZ color 70.2528, 70.7516, 79.7657 by changing the saturation by 10% instead.

70.2528, 70.7516,
79.7657

70.2528, 70.7516,
79.7657

450.6897,
463.1846, 513.8288

52.0130, 52.1395,
59.0005

118.5935,
120.2800, 134.8447

37.2397, 37.1163,
42.1935

149.4251,
151.9650, 169.9956

25.5677, 25.2975,
28.9262

185.1847,
188.7765, 210.7788

16.6315, 16.2989,
18.7799

226.2376,
231.0989, 257.6129

10.0658, 9.7359,
11.3361

272.9492,
279.3165, 310.9164

5.5052, 5.2242,
6.1764

325.6849,

2.5844, 2.3794,

333.8137, 371.1079

2.8821

384.8099,
394.9750, 438.6058

■ 0.9380, 0.8153,
1.0348

■ 0.0000, 0.0000,
0.0000

■ 70.2528, 70.7516,
79.7657

■ 70.2528, 70.7516,
79.7657

■ 63.4015, 59.2917,
70.5658

■ 78.0233, 83.9010,
89.7266

■ 57.4274, 49.4431,
62.1020

■ 84.7947, 94.9037,
99.8146

■ 52.2944, 41.1350,
54.3545

■ 86.4435, 95.5632,
108.4972

■ 47.9611, 34.2880,
47.3009

■ 44.3827, 28.8151,
40.9169

■ 41.5097, 24.6204,
35.1767

■ 39.2862, 21.5953,
30.0519

■ 37.6470, 19.6128,
25.5107

■ 36.5106, 18.5130,
21.5153

Harmonies

Analogous

The Analogous color harmony consists of three colors that are next to each other on the color wheel.



69.3631, 70.7516, 83.8029



70.2528, 70.7516, 79.7657



70.3292, 70.7516, 75.1471

Triad

The Triadic color harmony groups three colors that are evenly spaced from another and form a triangle on the color wheel.



70.2528, 70.7516, 79.7657



66.5843, 70.7516, 68.6646



64.9767, 70.7516, 83.1907

Complementary

The Complementary color scheme is a pair of colors which are on the opposite of each other on the color wheel.



70.2528, 70.7516, 79.7657



69.5086, 76.3164, 80.1780

Split Complementary

Split-complementary colors differ from the complementary color scheme. The scheme consists of three colors, the original color and two neighbors of the complement color.



64.2567, 70.7516, 78.9572



70.2528, 70.7516, 79.7657



65.1749, 70.7516, 70.6444

Square

The Square scheme is like the rectangle color scheme, but the four colors are evenly spaced on the color wheel.



70.2528, 70.7516, 79.7657



68.1936, 70.7516, 68.8615



64.3287, 70.7516, 74.3702



66.3097, 70.7516, 85.8341

Rectangle

The Rectangle color scheme consists of four colors that form a rectangle on the color wheel.



70.2528, 70.7516, 79.7657



69.9070, 70.7516, 72.3700



64.3287, 70.7516, 74.3702



64.6559, 70.7516, 81.8993

Sweetspot

The Sweet Spot groups the original color and five complimentary colors.



70.2548, 70.7547, 79.7672



93.0636, 96.6367, 106.3587



68.7102, 69.8471, 84.7242



19.9403, 20.7195, 22.7919



0.0000, 0.0000, 0.0000



20.3446, 21.4041, 23.3091

Same Dimension

The Same Dimension uses a secret algorithm to generate beautiful new colors.



70.2548, 70.7547, 79.7672



87.3884, 87.0696, 98.9692



69.2661, 70.3592, 74.5610



14.6966, 14.4958, 16.6027



20.5487, 10.3537, 11.7846



1.5653, 0.7838, 1.1175

Inverse Universe

The Inverse Universe completely reimagines the original color for something new.



70.2548, 70.7547, 79.7672



87.3884, 87.0696, 98.9692



70.5361, 76.7274, 85.5885



14.6966, 14.4958, 16.6027



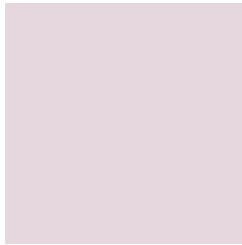
20.5487, 10.3537, 11.7846



1.5653, 0.7838, 1.1175

Previews

White Background



This preview shows how the XYZ color 70.2528, 70.7516, 79.7657 looks on a white background.

Color Contrast Check

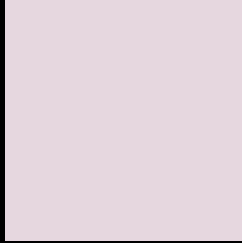
Large Text (above 18pt) WCAG AA × Fail

Any Text WCAG AA × Fail

Large Text (above 18pt) WCAG AAA × Fail

Any Text WCAG AAA × Fail

Black Background



This preview shows how the XYZ color 70.2528, 70.7516, 79.7657 looks on a black background.

Color Contrast Check

Large Text (above 18pt) WCAG AA ✓ Pass

Any Text WCAG AA ✓ Pass

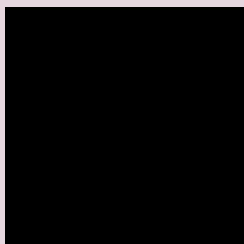
Large Text (above 18pt) WCAG AAA ✓ Pass

Any Text WCAG AAA ✓ Pass

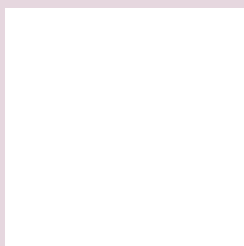
If you want to check with other color combinations, try the [Color Contrast Checker](#).

XYZ 70.2528, 70.7516, 79.7657

Background



This preview shows how black text looks on a background with the XYZ color 70.2528, 70.7516, 79.7657.



This preview shows how white text looks on a background with the XYZ color 70.2528, 70.7516,

Color Blindness Simulation

Color vision deficiency is a very complex topic, and I could not describe the different causes any better than Wikipedia does, so if you want to learn more, you should check out their [article about color blindness](#).

Dichromacy



Original Color

70.2528, 70.7516, 79.7657

Protanopia

68.4808, 70.9512, 81.3198

Deuteranopia

72.2579, 70.6459, 80.3486



Tritanopia

71.4254, 70.8516, 85.5125

Trichromacy



Original Color

70.2528, 70.7516, 79.7657

Protanomaly

69.0079, 70.8548, 80.5603

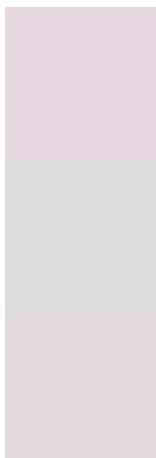
Deuteranomaly

71.5097, 70.6325, 80.3855

Tritanomaly

71.0052, 70.6835, 83.2997

Monochromacy



Original Color

70.2528, 70.7516, 79.7657

Achromatopsia

68.0267, 71.5694, 77.9390

Achromatomaly

68.8630, 71.2106, 78.5222

CSS Examples

Text

The CSS property to change the color of the text to XYZ 70.2528, 70.7516, 79.7657 is called "color". The color property can be set on classes, ids or directly on the HTML element.

This example shows how text in the color rgb(230, 215, 223) looks like.

```
.text, #text, p{  
    color:rgb(230, 215, 223)  
}
```

If you want to add a text shadow in that color use the text-shadow property, you can generate a text shadow directly with our [CSS Text Shadow Generator](#).

Here you see how black text with a 4 pixel rgb(230, 215, 223) colored shadow looks like.

```
.shadow{ text-shadow: 4px 4px 2px rgb(230, 215, 223) }
```

Border

The CSS property to change the border of an element to XYZ 70.2528, 70.7516, 79.7657 is called "border". The border property can be set on classes, ids or directly on the HTML element.

This example shows the color as border, it can be applied via the CSS property "border" or "border-color".

```
.border, #border, table{ border:4px solid rgb(230, 215, 223) }
```


If only the border color should be changed use the property `border-color`.

```
.border{ border-color:rgb(230, 215, 223) }
```

If you want to add a box shadow in that color use:

Here you see how a box with a 4 pixel `rgb(230, 215, 223)` colored shadow looks like.

```
.boxshadow{ -moz-box-shadow:4px 4px 4px  
4px rgb(230, 215, 223); -webkit-box-  
shadow:4px 4px 4px 4px rgb(230, 215, 223);  
box-shadow:4px 4px 4px 4px rgb(230, 215,  
223) }
```

Background

The CSS property to change the background color of an element to XYZ 70.2528, 70.7516, 79.7657 is called "background". The background property can be set on classes, ids or directly on the HTML element.

```
.background, #background, body{  
background: rgb(230, 215, 223) }
```

If only the background color should be changed can be used:

```
.background{ background-color: rgb(230,  
215, 223) }
```

This example shows the color as background, it is applied via the CSS property "background".

To optimize and compress your CSS code, you can use our [online CSS compressor and optimizer](#) based on csstidy. If you want to create a linear or radial gradient as background or border, check our [CSS Gradient Generator](#).

Hey! You found this booklet interesting? Support Converting Colors with the new Membership Option!

The pro membership hides all ads, plus gives you double the colors in the color bucket, and more awesome pro features!

[Learn more, Memberships starting at \\$2.50/m!](#)

**Follow me
on Twitter!**

@ConvertingColor