

Converting Colors

XYZ(70.7498, 70.6675, 79.0248)

Have a look what the booklet for
XYZ(70.7498, 70.6675, 79.0248)
contains.

XYZ(70.8357, 70.6907, 79.0185)	3
<i>Conversions</i>	4
<i>Details</i>	6
<i>Harmonies</i>	12
<i>Previews</i>	24
<i>Color Blindness Simulation</i>	28
<i>CSS Examples</i>	31

Color

**XYZ(70.8357, 70.6907,
79.0185)**

Conversions

Conversions Part 1

Format	Color
Hex	E9D6DE
RGB	233, 214, 222
RGB Percent	91%, 84%, 87%
CMY	0.0863, 0.1608, 0.1294
CMYK	0.00, 0.08, 0.05, 0.09
HSL	335°, 30%, 88%
HSV	335°, 8%, 91%
XYZ	70.8357, 70.6907, 79.0185
YIQ	220.5930, 8.7560, 6.5160

Conversions

Conversions Part 2

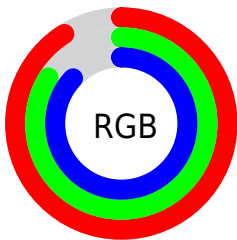
Format	Color
R _Y B	233, 214, 222
Decimal	15324894
CIE Lab	87.33, 7.92, -1.57
CIE LCh	87, 8.069, 348.805
Yxy	70.6907, 0.3212, 0.3205
Android (android.graphics.Color)	4293514974 (0xFFE9D6DE)
YUV	220.5930, 0.6937, 10.8809
Hunter-Lab	84.0778, 3.2506, 3.1321

Details

The XYZ color **70.8357, 70.6907, 79.0185** is a light color, and the websafe version is hex **CCCCCC**. A complement of this color would be **70.4638, 78.0121, 82.5820**, and the grayscale version is **68.4347, 71.9986, 78.4065**.

A 20% lighter version of the original color is **95.0500, 100.0000, 108.9000**, and **37.5047, 36.9334, 41.7114** is the 20% darker color. If you saturate the color by 10%, you get **63.6193, 59.0362, 68.0455**, and if you desaturate by 10%, it is **79.0444, 84.0961, 91.0379**.

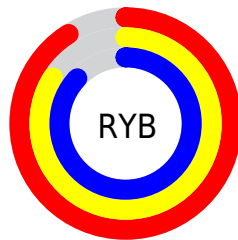
Distribution



Red (91%)

Green (84%)

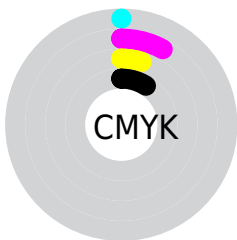
Blue (87%)



Red (91%)

Yellow (84%)

Blue (87%)

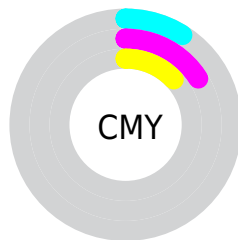


Cyan (0%)

Magenta (8%)

Yellow (5%)

Black (9%)



Cyan (9%)

Magenta (16%)

Yellow (13%)

Brightness & Saturation Gradients

These gradients show how the XYZ color 70.8357, 70.6907, 79.0185 changes by changing the brightness by 10 percent. The first figure shows a shift by +10% for each color and the second figure -10%.

Similar to the brightness gradients but the following saturation gradients show a change of the XYZ color 70.8357, 70.6907, 79.0185 by changing the saturation by 10% instead.

70.8357, 70.6907,
79.0185

70.8357, 70.6907,
79.0185

452.6997,
462.9715, 511.2382

52.4902, 52.0898,
58.3896

119.4195,
120.1932, 133.7838

37.6218, 37.0767,
41.7052

150.3886,
151.8636, 168.7573

25.8652, 25.2669,
28.5467

186.2961,
188.6594, 209.3494

16.8549, 16.2760,
18.4955

227.5076,
230.9648, 255.9787

10.2258, 9.7197,
11.1332

274.3884,
279.1643, 309.0637

5.6123, 5.2135,
6.0412

327.3037,

2.6492, 2.3731,

333.6424, 369.0229

2.8010

386.6190,
394.7833, 436.2749

■ 0.9711, 0.8120,
0.9939

■ 0.0000, 0.0000,
0.0000

■ 70.8357, 70.6907,
79.0185

■ 70.8357, 70.6907,
79.0185

■ 63.6193, 59.0362,
68.0455

■ 79.0444, 84.0961,
91.0379

■ 57.3500, 49.0509,
58.0849

■ 86.4615, 95.6826,
103.5228

■ 51.9884, 40.6600,
49.1069

■ 87.4147, 96.0639,
108.5427

■ 47.4893, 33.7796,
41.0787

■ 43.8040, 28.3180,
33.9653

■ 40.8785, 24.1733,
27.7293

■ 38.6515, 21.2300,
22.3296

■ 37.0515, 19.3521,
17.7209

■ 35.9794, 18.3485,
13.8472

Harmonies

Analogous

The Analogous color harmony consists of three colors that are next to each other on the color wheel.



69.9749, 70.6907, 84.0658



70.8357, 70.6907, 79.0185



70.7058, 70.6907, 73.6479

Triad

The Triadic color harmony groups three colors that are evenly spaced from another and form a triangle on the color wheel.



70.8357, 70.6907, 79.0185



66.0191, 70.6907, 67.4885



64.8129, 70.6907, 85.1110

Complementary

The Complementary color scheme is a pair of colors which are on the opposite of each other on the color wheel.



70.8357, 70.6907, 79.0185



70.4638, 78.0121, 82.5820

Split Complementary

Split-complementary colors differ from the complementary color scheme. The scheme consists of three colors, the original color and two neighbors of the complement color.



63.7915, 70.6907, 80.3909



70.8357, 70.6907, 79.0185



64.4788, 70.6907, 70.2855

Square

The Square scheme is like the rectangle color scheme, but the four colors are evenly spaced on the color wheel.



70.8357, 70.6907, 79.0185



67.9009, 70.6907, 67.1599



63.6704, 70.6907, 74.9575



66.4829, 70.6907, 87.6921

Rectangle

The Rectangle color scheme consists of four colors that form a rectangle on the color wheel.



70.8357, 70.6907, 79.0185



70.0755, 70.6907, 70.6004



63.6704, 70.6907, 74.9575



64.3836, 70.6907, 83.7119

Sweetspot

The Sweet Spot groups the original color and five complimentary colors.



70.8377, 70.6938, 79.0200



92.9726, 96.6003, 105.8799



69.7358, 69.9498, 86.9181



19.9217, 20.7121, 22.6944



0.0000, 0.0000, 0.0000



20.3446, 21.4041, 23.3091

Same Dimension

The Same Dimension uses a secret algorithm to generate beautiful new colors.



70.8377, 70.6938, 79.0200



85.1608, 83.8809, 94.3225



70.1128, 70.9186, 73.6153



15.3285, 15.1593, 17.0153



20.3796, 10.3545, 7.8003



1.6474, 0.8319, 0.8605

Inverse Universe

The Inverse Universe completely reimagines the original color for something new.



70.8377, 70.6938, 79.0200



85.1608, 83.8809, 94.3225



71.2234, 77.7444, 88.3442



15.3285, 15.1593, 17.0153



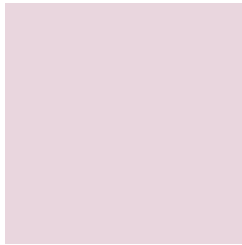
20.3796, 10.3545, 7.8003



1.6474, 0.8319, 0.8605

Previews

White Background



This preview shows how the XYZ color 70.8357, 70.6907, 79.0185 looks on a white background.

Color Contrast Check

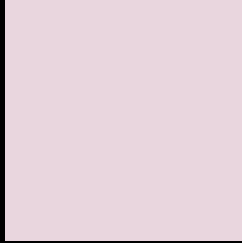
Large Text (above 18pt) WCAG AA × Fail

Any Text WCAG AA × Fail

Large Text (above 18pt) WCAG AAA × Fail

Any Text WCAG AAA × Fail

Black Background



This preview shows how the XYZ color 70.8357, 70.6907, 79.0185 looks on a black background.

Color Contrast Check

Large Text (above 18pt) WCAG AA ✓ Pass

Any Text WCAG AA ✓ Pass

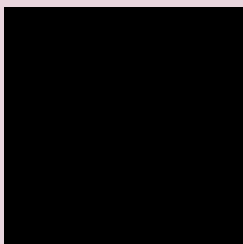
Large Text (above 18pt) WCAG AAA ✓ Pass

Any Text WCAG AAA ✓ Pass

If you want to check with other color combinations, try the [Color Contrast Checker](#).

XYZ 70.8357, 70.6907, 79.0185

Background



This preview shows how black text looks on a background with the XYZ color 70.8357, 70.6907, 79.0185.



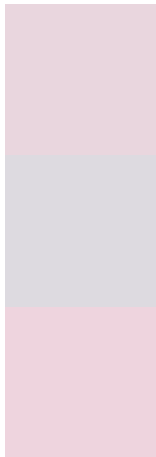
This preview shows how white text looks on a background with the XYZ color 70.8357, 70.6907,

79.0185.

Color Blindness Simulation

Color vision deficiency is a very complex topic, and I could not describe the different causes any better than Wikipedia does, so if you want to learn more, you should check out their [article about color blindness](#).

Dichromacy



Original Color

70.8357, 70.6907, 79.0185

Protanopia

68.3447, 70.8968, 80.6033

Deuteranopia

71.9882, 70.5380, 78.9283



Tritanopia

72.0089, 70.7941, 84.7323

Trichromacy



Original Color

70.8357, 70.6907, 79.0185

Protanomaly

69.1835, 70.9610, 79.8625

Deuteranomaly

71.5711, 70.6953, 78.9806

Tritanomaly

71.5911, 70.6270, 82.5322

Monochromacy



Original Color

70.8357, 70.6907, 79.0185

Achromatopsia

68.7264, 72.3055, 78.7407

Achromatomaly

69.1739, 71.3708, 78.5367

CSS Examples

Text

The CSS property to change the color of the text to XYZ 70.8357, 70.6907, 79.0185 is called "color". The color property can be set on classes, ids or directly on the HTML element.

This example shows how text in the color rgb(233, 214, 222) looks like.

```
.text, #text, p{  
    color:rgb(233, 214, 222)  
}
```

If you want to add a text shadow in that color use the text-shadow property, you can generate a text shadow directly with our [CSS Text Shadow Generator](#).

Here you see how black text with a 4 pixel rgb(233, 214, 222) colored shadow looks like.

```
.shadow{ text-shadow: 4px 4px 2px rgb(233, 214, 222) }
```

Border

The CSS property to change the border of an element to XYZ 70.8357, 70.6907, 79.0185 is called "border". The border property can be set on classes, ids or directly on the HTML element.

This example shows the color as border, it can be applied via the CSS property "border" or "border-color".

```
.border, #border, table{ border:4px solid rgb(233, 214, 222) }
```


If only the border color should be changed use the property `border-color`.

```
.border{ border-color:rgb(233, 214, 222) }
```

If you want to add a box shadow in that color use:

Here you see how a box with a 4 pixel `rgb(233, 214, 222)` colored shadow looks like.

```
.boxshadow{ -moz-box-shadow:4px 4px 4px  
4px rgb(233, 214, 222); -webkit-box-  
shadow:4px 4px 4px 4px rgb(233, 214, 222);  
box-shadow:4px 4px 4px 4px rgb(233, 214,  
222) }
```

Background

The CSS property to change the background color of an element to XYZ 70.8357, 70.6907, 79.0185 is called "background". The background property can be set on classes, ids or directly on the HTML element.

```
.background, #background, body{  
background: rgb(233, 214, 222) }
```

If only the background color should be changed can be used:

```
.background{ background-color: rgb(233,  
214, 222) }
```

This example shows the color as background, it is applied via the CSS property "background".

To optimize and compress your CSS code, you can use our [online CSS compressor and optimizer](#) based on csstidy. If you want to create a linear or radial gradient as background or border, check our [CSS Gradient Generator](#).

Hey! You found this booklet interesting? Support Converting Colors with the new Membership Option!

The pro membership hides all ads, plus gives you double the colors in the color bucket, and more awesome pro features!

[Learn more, Memberships starting at \\$2.50/m!](#)

**Follow me
on Twitter!**

@ConvertingColor