

Converting Colors

XYZ(71.0333, 70.8839, 74.9038)

Have a look what the booklet for
XYZ(71.0333, 70.8839, 74.9038)
contains.

XYZ(71.0333, 70.8839, 74.9038)	3
<i>Conversions</i>	4
<i>Details</i>	6
<i>Harmonies</i>	12
<i>Previews</i>	24
<i>Color Blindness Simulation</i>	28
<i>CSS Examples</i>	31

Color

**XYZ(71.0333, 70.8839,
74.9038)**

Conversions

Conversions Part 1

Format	Color
Hex	ECD6D8
RGB	236, 214, 216
RGB Percent	93%, 84%, 85%
CMY	0.0745, 0.1608, 0.1529
CMYK	0.00, 0.09, 0.08, 0.07
HSL	355°, 37%, 88%
HSV	355°, 9%, 93%
XYZ	71.0333, 70.8839, 74.9038
YIQ	220.8060, 12.4700, 5.2860

Conversions

Conversions Part 2

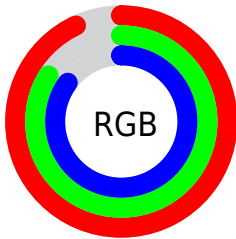
Format	Color
R _Y B	236, 214, 216
Decimal	15521496
CIE Lab	87.43, 7.93, 1.77
CIE LCh	87, 8.127, 12.587
Yxy	70.8839, 0.3276, 0.3269
Android (android.graphics.Color)	4293711576 (0xFFECD6D8)
YUV	220.8060, -2.3694, 13.3251
Hunter-Lab	84.1926, 3.2635, 6.1861

Details

The XYZ color **71.0333, 70.8839, 74.9038** is a light color, and the websafe version is hex **CCCCCC**. A complement of this color would be **72.5810, 80.2293, 89.5063**, and the grayscale version is **68.6028, 72.1755, 78.5991**.

A 20% lighter version of the original color is **95.0500, 100.0000, 108.9000**, and **37.6536, 37.0728, 38.8894** is the 20% darker color. If you saturate the color by 10%, you get **62.8925, 58.7554, 59.3852**, and if you desaturate by 10%, it is **80.4057, 84.8942, 92.6221**.

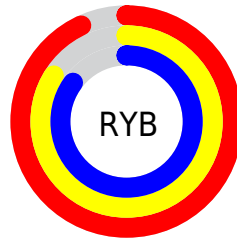
Distribution



Red (93%)

Green (84%)

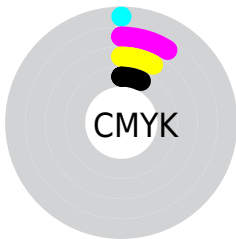
Blue (85%)



Red (93%)

Yellow (84%)

Blue (85%)

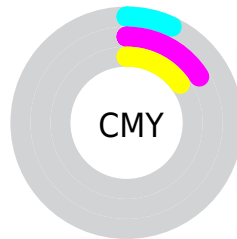


Cyan (0%)

Magenta (9%)

Yellow (8%)

Black (7%)



Cyan (7%)


Magenta (16%)


Yellow (15%)

Brightness & Saturation Gradients


These gradients show how the XYZ color 71.0333, 70.8839, 74.9038 changes by changing the brightness by 10 percent. The first figure shows a shift by +10% for each color and the second figure -10%.

Similar to the brightness gradients but the following saturation gradients show a change of the XYZ color 71.0333, 70.8839, 74.9038 by changing the saturation by 10% instead.


 71.0333, 70.8839,
74.9038

 71.0333, 70.8839,
74.9038


453.3799,
463.6475, 496.8334

 52.6520, 52.2475,
55.0328


119.6994,
120.4684, 127.9220

 37.7514, 37.2024,
39.0292

150.7149,
152.1852, 161.9064

 25.9661, 25.3642,
26.4745


186.6725,
189.0310, 201.4322

 16.9309, 16.3486,
16.9500


227.9376,
231.3901, 246.9182

 10.2802, 9.7712,
10.0373

274.8756,
279.6469, 298.7827

 5.6488, 5.2475,
5.3177

327.8517,

 2.6714, 2.3932,

334.1858, 357.4444

2.3729

387.2313,
395.3912, 423.3218

■ 0.9825, 0.8224,
0.7716

■ 0.0000, 0.0000,
0.0000

■ 71.0333, 70.8839,
74.9038

■ 71.0333, 70.8839,
74.9038

■ 62.8925, 58.7554,
59.3852

■ 80.4057, 84.8942,
92.6221

■ 55.9265, 48.4196,
45.9760

■ 88.4024, 96.5730,
108.5889

■ 50.0826, 39.7944,
34.5865

■ 45.3020, 32.7874,
25.1186

■ 41.5204, 27.2976,
17.4662

■ 38.6665, 23.2125,
11.5127

■ 36.6598, 20.4043,
7.1281

■ 35.4053, 18.7215,
4.1632

■ 34.7632, 17.9292,
2.4324

Harmonies

Analogous

The Analogous color harmony consists of three colors that are next to each other on the color wheel.



70.9501, 70.8839, 80.3816



71.0333, 70.8839, 74.9038



70.1223, 70.8839, 70.2578

Triad

The Triadic color harmony groups three colors that are evenly spaced from another and form a triangle on the color wheel.



71.0333, 70.8839, 74.9038



64.9103, 70.8839, 69.6693



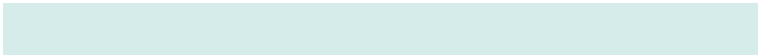
66.2764, 70.8839, 87.6932

Complementary

The Complementary color scheme is a pair of colors which are on the opposite of each other on the color wheel.



71.0333, 70.8839, 74.9038



72.5810, 80.2293, 89.5063

Split Complementary

Split-complementary colors differ from the complementary color scheme. The scheme consists of three colors, the original color and two neighbors of the complement color.



64.6966, 70.8839, 84.5436



71.0333, 70.8839, 74.9038



63.9182, 70.8839, 74.0656

Square

The Square scheme is like the rectangle color scheme, but the four colors are evenly spaced on the color wheel.



71.0333, 70.8839, 74.9038



66.5733, 70.8839, 67.3333



63.8407, 70.8839, 79.5029



68.1791, 70.8839, 87.9438

Rectangle

The Rectangle color scheme consists of four colors that form a rectangle on the color wheel.



71.0333, 70.8839, 74.9038



69.0836, 70.8839, 68.1872



63.8407, 70.8839, 79.5029



65.6909, 70.8839, 86.9317

Sweetspot

The Sweet Spot groups the original color and five complimentary colors.



71.0353, 70.8870, 74.9053



91.5580, 94.7759, 102.3108



73.0550, 71.6111, 89.3296



19.4024, 19.9946, 21.5306



0.0000, 0.0000, 0.0000



20.3446, 21.4041, 23.3091

Same Dimension

The Same Dimension uses a secret algorithm to generate beautiful new colors.



71.0353, 70.8870, 74.9053



82.9075, 81.8557, 85.9217



73.0660, 75.3590, 74.3169



15.1210, 15.0762, 15.9223



19.1645, 9.8685, 1.4018



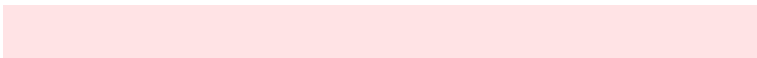
1.5239, 0.7825, 0.2102

Inverse Universe

The Inverse Universe completely reimagines the original color for something new.



71.0353, 70.8870, 74.9053



82.9075, 81.8557, 85.9217



70.3983, 75.4024, 90.2014



15.1210, 15.0762, 15.9223



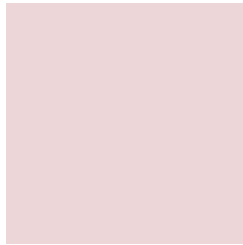
19.1645, 9.8685, 1.4018



1.5239, 0.7825, 0.2102

Previews

White Background



This preview shows how the XYZ color 71.0333, 70.8839, 74.9038 looks on a white background.

Color Contrast Check

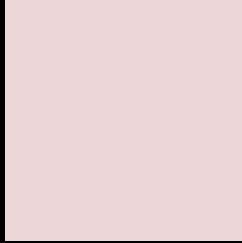
Large Text (above 18pt) WCAG AA × Fail

Any Text WCAG AA × Fail

Large Text (above 18pt) WCAG AAA × Fail

Any Text WCAG AAA × Fail

Black Background



This preview shows how the XYZ color 71.0333, 70.8839, 74.9038 looks on a black background.

Color Contrast Check

Large Text (above 18pt) WCAG AA ✓ Pass

Any Text WCAG AA ✓ Pass

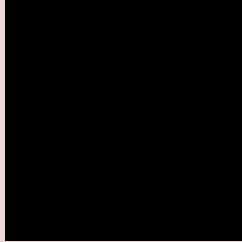
Large Text (above 18pt) WCAG AAA ✓ Pass

Any Text WCAG AAA ✓ Pass

If you want to check with other color combinations, try the [Color Contrast Checker](#).

XYZ 71.0333, 70.8839, 74.9038

Background



This preview shows how black text looks on a background with the XYZ color 71.0333, 70.8839, 74.9038.



This preview shows how white text looks on a background with the XYZ color 71.0333, 70.8839,

Color Blindness Simulation

Color vision deficiency is a very complex topic, and I could not describe the different causes any better than Wikipedia does, so if you want to learn more, you should check out their [article about color blindness](#).

Dichromacy



Original Color

71.0333, 70.8839, 74.9038

Protanopia

68.1577, 70.8927, 76.4210

Deuteranopia

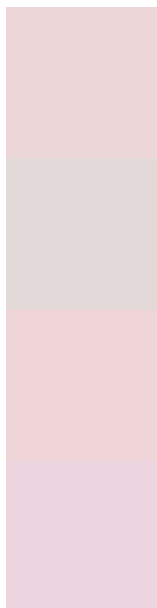
72.2138, 70.7456, 74.8149



Tritanopia

72.9462, 70.9213, 83.9732

Trichromacy



Original Color

71.0333, 70.8839, 74.9038

Protanomaly

69.3321, 71.1294, 75.7208

Deuteranomaly

71.7855, 70.8971, 74.8667

Tritanomaly

72.1738, 70.9748, 80.4166

Monochromacy



Original Color

71.0333, 70.8839, 74.9038

Achromatopsia

68.7264, 72.3055, 78.7407

Achromatomaly

69.2216, 71.4260, 77.1561

CSS Examples

Text

The CSS property to change the color of the text to XYZ 71.0333, 70.8839, 74.9038 is called "color". The color property can be set on classes, ids or directly on the HTML element.

This example shows how text in the color rgb(236, 214, 216) looks like.

```
.text, #text, p{  
    color:rgb(236, 214, 216)  
}
```

If you want to add a text shadow in that color use the text-shadow property, you can generate a text shadow directly with our [CSS Text Shadow Generator](#).

Here you see how black text with a 4 pixel rgb(236, 214, 216) colored shadow looks like.

```
.shadow{ text-shadow: 4px 4px 2px rgb(236, 214, 216) }
```

Border

The CSS property to change the border of an element to XYZ 71.0333, 70.8839, 74.9038 is called "border". The border property can be set on classes, ids or directly on the HTML element.

This example shows the color as border, it can be applied via the CSS property "border" or "border-color".

```
.border, #border, table{ border:4px solid rgb(236, 214, 216) }
```


If only the border color should be changed use the property `border-color`.

```
.border{ border-color:rgb(236, 214, 216) }
```

If you want to add a box shadow in that color use:

Here you see how a box with a 4 pixel `rgb(236, 214, 216)` colored shadow looks like.

```
.boxshadow{ -moz-box-shadow:4px 4px 4px  
4px rgb(236, 214, 216); -webkit-box-  
shadow:4px 4px 4px 4px rgb(236, 214, 216);  
box-shadow:4px 4px 4px 4px rgb(236, 214,  
216) }
```

Background

The CSS property to change the background color of an element to XYZ 71.0333, 70.8839, 74.9038 is called "background". The background property can be set on classes, ids or directly on the HTML element.

```
.background, #background, body{  
background: rgb(236, 214, 216) }
```

If only the background color should be changed can be used:

```
.background{ background-color: rgb(236,  
214, 216) }
```

This example shows the color as background, it is applied via the CSS property "background".

To optimize and compress your CSS code, you can use our [online CSS compressor and optimizer](#) based on csstidy. If you want to create a linear or radial gradient as background or border, check our [CSS Gradient Generator](#).

Hey! You found this booklet interesting? Support Converting Colors with the new Membership Option!

The pro membership hides all ads, plus gives you double the colors in the color bucket, and more awesome pro features!

[Learn more, Memberships starting at \\$2.50/m!](#)

**Follow me
on Twitter!**

@ConvertingColor