

Converting Colors

XYZ(71.0937, 70.8698, 76.9500)

Have a look what the booklet for
XYZ(71.0937, 70.8698, 76.9500)
contains.

XYZ(71.0937, 70.8698, 76.9500)	3
<i>Conversions</i>	4
<i>Details</i>	6
<i>Harmonies</i>	12
<i>Previews</i>	24
<i>Color Blindness Simulation</i>	28
<i>CSS Examples</i>	31

Color

**XYZ(71.0937, 70.8698,
76.9500)**

Conversions

Conversions Part 1

Format	Color
Hex	EBD6DB
RGB	235, 214, 219
RGB Percent	92%, 84%, 86%
CMY	0.0784, 0.1608, 0.1412
CMYK	0.00, 0.09, 0.07, 0.08
HSL	346°, 34%, 88%
HSV	346°, 9%, 92%
XYZ	71.0937, 70.8698, 76.9500
YIQ	220.8490, 10.9110, 6.0070

Conversions

Conversions Part 2

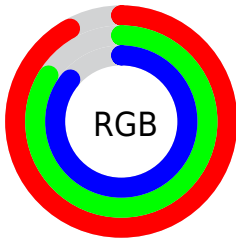
Format	Color
R _Y B	235, 214, 219
Decimal	15455963
CIE Lab	87.42, 8.09, 0.17
CIE LCh	87, 8.091, 1.175
Yxy	70.8698, 0.3248, 0.3237
Android (android.graphics.Color)	4293646043 (0xFFEBD6DB)
YUV	220.8490, -0.9116, 12.4104
Hunter-Lab	84.1842, 3.4212, 4.7339

Details

The XYZ color **71.0937, 70.8698, 76.9500** is a light color, and the websafe version is hex **CCCCCC**. A complement of this color would be **71.7255, 79.4278, 86.4176**, and the grayscale version is **68.6239, 72.1976, 78.6232**.

A 20% lighter version of the original color is **95.0500, 100.0000, 108.9000**, and **37.6894, 37.0603, 40.2889** is the 20% darker color. If you saturate the color by 10%, you get **63.3380, 58.9301, 63.3521**, and if you desaturate by 10%, it is **79.9650, 84.6332, 92.1729**.

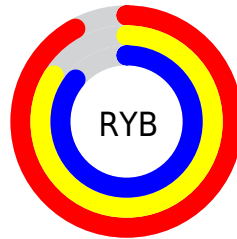
Distribution



Red (92%)

Green (84%)

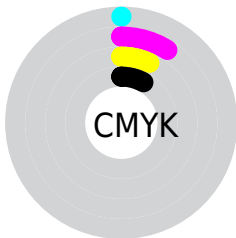
Blue (86%)



Red (92%)

Yellow (84%)

Blue (86%)

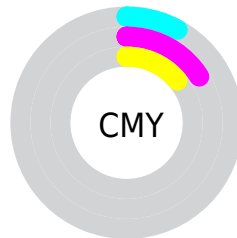


Cyan (0%)

Magenta (9%)

Yellow (7%)

Black (8%)



Cyan (8%)

Magenta (16%)

Yellow (14%)

Brightness & Saturation Gradients

These gradients show how the XYZ color 71.0937, 70.8698, 76.9500 changes by changing the brightness by 10 percent. The first figure shows a shift by +10% for each color and the second figure -10%.

Similar to the brightness gradients but the following saturation gradients show a change of the XYZ color 71.0937, 70.8698, 76.9500 by changing the saturation by 10% instead.

71.0937, 70.8698,
76.9500

71.0937, 70.8698,
76.9500

453.5877,
463.5982, 504.0267

52.7015, 52.2360,
56.7005

119.7849,
120.4483, 130.8413

37.7910, 37.1932,
40.3571

150.8146,
152.1618, 165.3201

25.9970, 25.3571,
27.5012

186.7875,
189.0039, 205.3792

16.9541, 16.3433,
17.7142

228.0690,
231.3591, 251.4370

10.2969, 9.7674,
10.5777

275.0244,
279.6117, 303.9122

5.6600, 5.2450,
5.6731

328.0191,

2.6781, 2.3917,

334.1461, 363.2231

2.5818

387.4184,
395.3468, 429.7884

■ 0.9859, 0.8216,
0.8830

■ 0.0000, 0.0000,
0.0000

■ 71.0937, 70.8698,
76.9500

■ 71.0937, 70.8698,
76.9500

■ 63.3380, 58.9301,
63.3521

■ 79.9650, 84.6332,
92.1729

■ 56.6475, 48.7284,
51.3205

■ 88.0421, 96.3907,
108.4193

■ 50.9765, 40.1860,
40.7993

■ 88.0713, 96.4024,
108.5734

■ 46.2738, 33.2147,
31.7276

■ 42.4835, 27.7178,
24.0404

■ 39.5439, 23.5880,
17.6673

■ 37.3853, 20.7032,
12.5316

■ 35.9261, 18.9195,
8.5475

■ 35.0478, 18.0205,
5.6109

Harmonies

Analogous

The Analogous color harmony consists of three colors that are next to each other on the color wheel.



70.6244, 70.8698, 82.3415



71.0937, 70.8698, 76.9500



70.5468, 70.8698, 71.8542

Triad

The Triadic color harmony groups three colors that are evenly spaced from another and form a triangle on the color wheel.



71.0937, 70.8698, 76.9500



65.4787, 70.8698, 68.5219



65.6066, 70.8698, 86.7389

Complementary

The Complementary color scheme is a pair of colors which are on the opposite of each other on the color wheel.



71.0937, 70.8698, 76.9500



71.7255, 79.4278, 86.4176

Split Complementary

Split-complementary colors differ from the complementary color scheme. The scheme consists of three colors, the original color and two neighbors of the complement color.



64.2699, 70.8698, 82.7316



71.0937, 70.8698, 76.9500



64.1970, 70.8698, 72.2105

Square

The Square scheme is like the rectangle color scheme, but the four colors are evenly spaced on the color wheel.



71.0937, 70.8698, 76.9500



67.2844, 70.8698, 67.1320



63.7586, 70.8698, 77.3807



67.4348, 70.8698, 88.1512

Rectangle

The Rectangle color scheme consists of four colors that form a rectangle on the color wheel.



71.0937, 70.8698, 76.9500



69.6855, 70.8698, 69.2673



63.7586, 70.8698, 77.3807



65.0861, 70.8698, 85.6416

Sweetspot

The Sweet Spot groups the original color and five complimentary colors.



71.0957, 70.8729, 76.9515



91.7334, 94.8460, 103.2341



71.5972, 70.8763, 88.5050



19.4495, 20.0135, 21.7788



0.0000, 0.0000, 0.0000



20.3446, 21.4041, 23.3091

Same Dimension

The Same Dimension uses a secret algorithm to generate beautiful new colors.



71.0957, 70.8729, 76.9515



83.4928, 82.0898, 89.0036



71.7976, 73.3136, 73.9889



15.2124, 15.1128, 16.4036



19.5053, 10.0048, 3.1963



1.5683, 0.8003, 0.4439

Inverse Universe

The Inverse Universe completely reimagines the original color for something new.



71.0957, 70.8729, 76.9515



83.4928, 82.0898, 89.0036



70.9567, 76.7511, 89.6728



15.2124, 15.1128, 16.4036



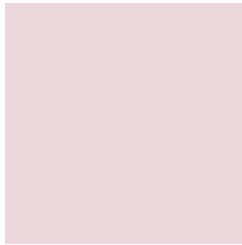
19.5053, 10.0048, 3.1963



1.5683, 0.8003, 0.4439

Previews

White Background



This preview shows how the XYZ color 71.0937, 70.8698, 76.9500 looks on a white background.

Color Contrast Check

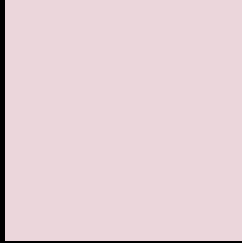
Large Text (above 18pt) WCAG AA × Fail

Any Text WCAG AA × Fail

Large Text (above 18pt) WCAG AAA × Fail

Any Text WCAG AAA × Fail

Black Background



This preview shows how the XYZ color 71.0937, 70.8698, 76.9500 looks on a black background.

Color Contrast Check

Large Text (above 18pt) WCAG AA ✓ Pass

Any Text WCAG AA ✓ Pass

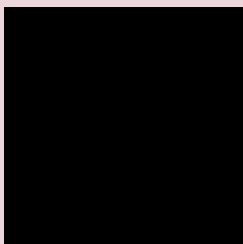
Large Text (above 18pt) WCAG AAA ✓ Pass

Any Text WCAG AAA ✓ Pass

If you want to check with other color combinations, try the [Color Contrast Checker](#).

XYZ 71.0937, 70.8698, 76.9500

Background



This preview shows how black text looks on a background with the XYZ color 71.0937, 70.8698, 76.9500.



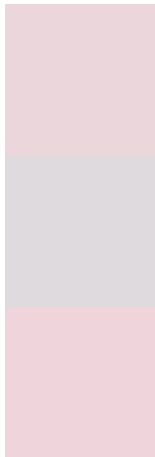
This preview shows how white text looks on a background with the XYZ color 71.0937, 70.8698,

76.9500.

Color Blindness Simulation

Color vision deficiency is a very complex topic, and I could not describe the different causes any better than Wikipedia does, so if you want to learn more, you should check out their [article about color blindness](#).

Dichromacy



Original Color

71.0937, 70.8698, 76.9500

Protanopia

68.2467, 70.8929, 78.4933

Deuteranopia

72.2648, 70.7267, 76.8607



Tritanopia

72.2784, 70.5770, 83.9420

Trichromacy



Original Color

71.0937, 70.8698, 76.9500

Protanomaly

69.4097, 71.1239, 77.7802

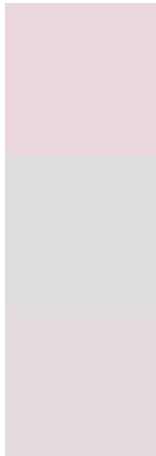
Deuteranomaly

71.8403, 70.8801, 76.9127

Tritanomaly

71.9769, 70.8576, 81.1175

Monochromacy



Original Color

71.0937, 70.8698, 76.9500

Achromatopsia

68.7264, 72.3055, 78.7407

Achromatomaly

69.3537, 71.4789, 77.8516

CSS Examples

Text

The CSS property to change the color of the text to XYZ 71.0937, 70.8698, 76.9500 is called "color". The color property can be set on classes, ids or directly on the HTML element.

This example shows how text in the color rgb(235, 214, 219) looks like.

```
.text, #text, p{  
    color:rgb(235, 214, 219)  
}
```

If you want to add a text shadow in that color use the text-shadow property, you can generate a text shadow directly with our [CSS Text Shadow Generator](#).

Here you see how black text with a 4 pixel rgb(235, 214, 219) colored shadow looks like.

```
.shadow{ text-shadow: 4px 4px 2px rgb(235, 214, 219) }
```

Border

The CSS property to change the border of an element to XYZ 71.0937, 70.8698, 76.9500 is called "border". The border property can be set on classes, ids or directly on the HTML element.

This example shows the color as border, it can be applied via the CSS property "border" or "border-color".

```
.border, #border, table{ border:4px solid rgb(235, 214, 219) }
```


If only the border color should be changed use the property `border-color`.

```
.border{ border-color:rgb(235, 214, 219) }
```

If you want to add a box shadow in that color use:

Here you see how a box with a 4 pixel `rgb(235, 214, 219)` colored shadow looks like.

```
.boxshadow{ -moz-box-shadow:4px 4px 4px  
4px rgb(235, 214, 219); -webkit-box-  
shadow:4px 4px 4px 4px rgb(235, 214, 219);  
box-shadow:4px 4px 4px 4px rgb(235, 214,  
219) }
```

Background

The CSS property to change the background color of an element to XYZ 71.0937, 70.8698, 76.9500 is called "background". The background property can be set on classes, ids or directly on the HTML element.

```
.background, #background, body{  
background: rgb(235, 214, 219) }
```

If only the background color should be changed can be used:

```
.background{ background-color: rgb(235,  
214, 219) }
```

This example shows the color as background, it is applied via the CSS property "background".

To optimize and compress your CSS code, you can use our [online CSS compressor and optimizer](#) based on csstidy. If you want to create a linear or radial gradient as background or border, check our [CSS Gradient Generator](#).

Hey! You found this booklet interesting? Support Converting Colors with the new Membership Option!

The pro membership hides all ads, plus gives you double the colors in the color bucket, and more awesome pro features!

[Learn more, Memberships starting at \\$2.50/m!](#)

**Follow me
on Twitter!**

@ConvertingColor