

Converting Colors

XYZ(71.1289, 70.1663, 74.1680)

Have a look what the booklet for
XYZ(71.1289, 70.1663, 74.1680)
contains.

XYZ(71.0691, 70.1704, 74.0885)	3
<i>Conversions</i>	4
<i>Details</i>	6
<i>Harmonies</i>	12
<i>Previews</i>	24
<i>Color Blindness Simulation</i>	28
<i>CSS Examples</i>	31

Color

**XYZ(71.0691, 70.1704,
74.0885)**

Conversions

Conversions Part 1

Format	Color
Hex	EED4D7
RGB	238, 212, 215
RGB Percent	93%, 83%, 84%
CMY	0.0667, 0.1686, 0.1569
CMYK	0.00, 0.11, 0.10, 0.07
HSL	353°, 43%, 88%
HSV	353°, 11%, 93%
XYZ	71.0691, 70.1704, 74.0885
YIQ	220.1160, 14.5330, 6.4450

Conversions

Conversions Part 2

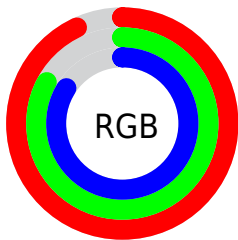
Format	Color
R _Y B	238, 212, 215
Decimal	15652055
CIE Lab	87.08, 9.51, 1.81
CIE LCh	87, 9.680, 10.798
Yxy	70.1704, 0.3301, 0.3259
Android (android.graphics.Color)	4293842135 (0xFFEED4D7)
YUV	220.1160, -2.5222, 15.6843
Hunter-Lab	83.7678, 4.8469, 6.1983

Details

The XYZ color **71.0691, 70.1704, 74.0885** is a light color, and the websafe version is hex **FFCCCC**. A complement of this color would be **72.7240, 81.1460, 90.4309**, and the grayscale version is **68.1201, 71.6676, 78.0460**.

A 20% lighter version of the original color is **95.0500, 100.0000, 108.9000**, and **37.6935, 36.5971, 38.3350** is the 20% darker color. If you saturate the color by 10%, you get **63.0187, 58.1242, 58.9038**, and if you desaturate by 10%, it is **80.3487, 84.1160, 91.4028**.

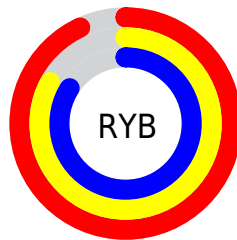
Distribution



Red (93%)

Green (83%)

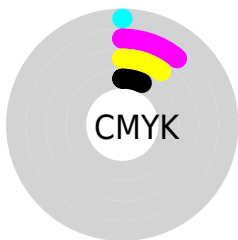
Blue (84%)



Red (93%)

Yellow (83%)

Blue (84%)

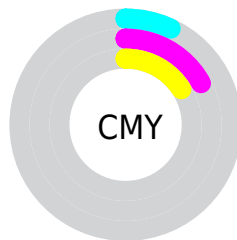


Cyan (0%)

Magenta (11%)

Yellow (10%)

Black (7%)



Cyan (7%)

Magenta (17%)

Yellow (16%)

Brightness & Saturation Gradients

These gradients show how the XYZ color 71.0691, 70.1704, 74.0885 changes by changing the brightness by 10 percent. The first figure shows a shift by +10% for each color and the second figure -10%.

Similar to the brightness gradients but the following saturation gradients show a change of the XYZ color 71.0691, 70.1704, 74.0885 by changing the saturation by 10% instead.

71.0691, 70.1704,
74.0885

71.0691, 70.1704,
74.0885

453.5030,
461.1481, 493.9503

52.6813, 51.6655,
54.3693

119.7501,
119.4517, 126.7565

37.7749, 36.7385,
38.5018

150.7740,
150.9969, 160.5422

25.9844, 25.0051,
26.0675

186.7407,
187.6576, 199.8540

16.9446, 16.0808,
16.6479

228.0155,
229.8183, 245.1101

10.2901, 9.5814,
9.8245

274.9638,
277.8632, 296.7293

5.6554, 5.1223,
5.1787

327.9509,

2.6754, 2.3192,

332.1769, 355.1301

2.2919

387.3422,
393.1438, 420.7309

■ 0.9845, 0.7838,
0.7267

■ 0.0000, 0.0000,
0.0000

■ 71.0691, 70.1704,
74.0885

■ 71.0691, 70.1704,
74.0885

■ 63.0187, 58.1242,
58.9038

■ 80.3487, 84.1160,
91.4028

■ 56.1403, 47.8864,
45.7619

■ 89.0702, 96.9173,
108.6202

■ 50.3806, 39.3723,
34.5770

■ 45.6802, 32.4871,
25.2550

■ 41.9740, 27.1265,
17.6944

■ 39.1898, 23.1744,
11.7836

■ 37.2454, 20.4976,
7.3986

■ 36.0436, 18.9377,
4.3969

■ 35.4631, 18.2584,
2.7182

Harmonies

Analogous

The Analogous color harmony consists of three colors that are next to each other on the color wheel.



70.8968, 70.1704, 80.5837



71.0691, 70.1704, 74.0885



70.0495, 70.1704, 68.5333

Triad

The Triadic color harmony groups three colors that are evenly spaced from another and form a triangle on the color wheel.



71.0691, 70.1704, 74.0885



63.8870, 70.1704, 67.3372



65.2714, 70.1704, 88.8101

Complementary

The Complementary color scheme is a pair of colors which are on the opposite of each other on the color wheel.



71.0691, 70.1704, 74.0885



72.7240, 81.1460, 90.4309

Split Complementary

Split-complementary colors differ from the complementary color scheme. The scheme consists of three colors, the original color and two neighbors of the complement color.



63.4491, 70.1704, 84.8545



71.0691, 70.1704, 74.0885



62.6624, 70.1704, 72.3707

Square

The Square scheme is like the rectangle color scheme, but the four colors are evenly spaced on the color wheel.



71.0691, 70.1704, 74.0885



65.8815, 70.1704, 64.7849



62.5039, 70.1704, 78.7665



67.5149, 70.1704, 89.3346

Rectangle

The Rectangle color scheme consists of four colors that form a rectangle on the color wheel.



71.0691, 70.1704, 74.0885



68.8443, 70.1704, 66.0160



62.5039, 70.1704, 78.7665



64.5906, 70.1704, 87.8275

Sweetspot

The Sweet Spot groups the original color and five complimentary colors.



71.0711, 70.1735, 74.0900



91.5871, 94.7875, 102.4641



73.2281, 70.9197, 90.7190



19.4102, 19.9978, 21.5718



0.0000, 0.0000, 0.0000



20.3446, 21.4041, 23.3091

Same Dimension

The Same Dimension uses a secret algorithm to generate beautiful new colors.



71.0711, 70.1735, 74.0900



81.0037, 78.8958, 82.6737



73.2581, 75.1580, 72.9369



15.8469, 15.7885, 16.7498



19.8083, 10.1958, 1.6412



1.6719, 0.8578, 0.2631

Inverse Universe

The Inverse Universe completely reimagines the original color for something new.



71.0711, 70.1735, 74.0900



81.0037, 78.8958, 82.6737



70.3391, 75.6777, 91.7897



15.8469, 15.7885, 16.7498



19.8083, 10.1958, 1.6412



1.6719, 0.8578, 0.2631

Previews

White Background



This preview shows how the XYZ color 71.0691, 70.1704, 74.0885 looks on a white background.

Color Contrast Check

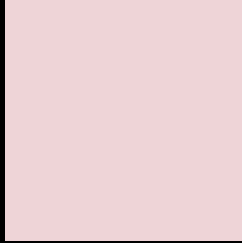
Large Text (above 18pt) WCAG AA × Fail

Any Text WCAG AA × Fail

Large Text (above 18pt) WCAG AAA × Fail

Any Text WCAG AAA × Fail

Black Background



This preview shows how the XYZ color 71.0691, 70.1704, 74.0885 looks on a black background.

Color Contrast Check

Large Text (above 18pt) WCAG AA ✓ Pass

Any Text WCAG AA ✓ Pass

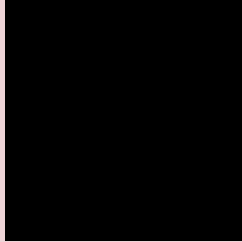
Large Text (above 18pt) WCAG AAA ✓ Pass

Any Text WCAG AAA ✓ Pass

If you want to check with other color combinations, try the [Color Contrast Checker](#).

XYZ 71.0691, 70.1704, 74.0885

Background



This preview shows how black text looks on a background with the XYZ color 71.0691, 70.1704, 74.0885.



This preview shows how white text looks on a background with the XYZ color 71.0691, 70.1704,

Color Blindness Simulation

Color vision deficiency is a very complex topic, and I could not describe the different causes any better than Wikipedia does, so if you want to learn more, you should check out their [article about color blindness](#).

Dichromacy



Original Color

71.0691, 70.1704, 74.0885

Protanopia

67.5919, 70.2173, 76.3205

Deuteranopia

71.4952, 70.0201, 74.0370



Tritanopia

72.8469, 70.1645, 82.3767

Trichromacy



Original Color

71.0691, 70.1704, 74.0885

Protanomaly

68.8197, 70.1046, 75.5500

Deuteranomaly

71.1566, 69.8456, 74.0212

Tritanomaly

72.2102, 70.2670, 79.5690

Monochromacy



Original Color

71.0691, 70.1704, 74.0885

Achromatopsia

68.0267, 71.5694, 77.9390

Achromatomaly

69.1463, 71.0186, 76.3932

CSS Examples

Text

The CSS property to change the color of the text to XYZ 71.0691, 70.1704, 74.0885 is called "color". The color property can be set on classes, ids or directly on the HTML element.

This example shows how text in the color `rgb(238, 212, 215)` looks like.

```
.text, #text, p{  
    color:rgb(238, 212, 215)  
}
```

If you want to add a text shadow in that color use the text-shadow property, you can generate a text shadow directly with our [CSS Text Shadow Generator](#).

Here you see how black text with a 4 pixel rgb(238, 212, 215) colored shadow looks like.

```
.shadow{ text-shadow: 4px 4px 2px rgb(238, 212, 215) }
```

Border

The CSS property to change the border of an element to XYZ 71.0691, 70.1704, 74.0885 is called "border". The border property can be set on classes, ids or directly on the HTML element.

This example shows the color as border, it can be applied via the CSS property "border" or "border-color".

```
.border, #border, table{ border:4px solid rgb(238, 212, 215) }
```


If only the border color should be changed use the property border-color.

```
.border{ border-color:rgb(238, 212, 215) }
```

If you want to add a box shadow in that color use:

Here you see how a box with a 4 pixel rgb(238, 212, 215) colored shadow looks like.

```
.boxshadow{ -moz-box-shadow:4px 4px 4px  
4px rgb(238, 212, 215); -webkit-box-  
shadow:4px 4px 4px 4px rgb(238, 212, 215);  
box-shadow:4px 4px 4px 4px rgb(238, 212,  
215) }
```

Background

The CSS property to change the background color of an element to XYZ 71.0691, 70.1704, 74.0885 is called "background". The background property can be set on classes, ids or directly on the HTML element.

```
.background, #background, body{  
background: rgb(238, 212, 215) }
```

If only the background color should be changed can be used:

```
.background{ background-color: rgb(238,  
212, 215) }
```

This example shows the color as background, it is applied via the CSS property "background".

To optimize and compress your CSS code, you can use our [online CSS compressor and optimizer](#) based on csstidy. If you want to create a linear or radial gradient as background or border, check our [CSS Gradient Generator](#).

Hey! You found this booklet interesting? Support Converting Colors with the new Membership Option!

The pro membership hides all ads, plus gives you double the colors in the color bucket, and more awesome pro features!

[Learn more, Memberships starting at \\$2.50/m!](#)

**Follow me
on Twitter!**

@ConvertingColor