

Converting Colors

XYZ(71.2095, 63.1361, 93.9478)

Have a look what the booklet for
XYZ(71.2095, 63.1361, 93.9478)
contains.

XYZ(71.3343, 63.1968, 94.0264)	3
<i>Conversions</i>	4
<i>Details</i>	6
<i>Harmonies</i>	12
<i>Previews</i>	24
<i>Color Blindness Simulation</i>	28
<i>CSS Examples</i>	31

Color

**XYZ(71.3343, 63.1968,
94.0264)**

Conversions

Conversions Part 1

Format	Color
Hex	F0C1F4
RGB	240, 193, 244
RGB Percent	94%, 76%, 96%
CMY	0.0588, 0.2431, 0.0431
CMYK	0.02, 0.21, 0.00, 0.04
HSL	295°, 70%, 86%
HSV	295°, 21%, 96%
XYZ	71.3343, 63.1968, 94.0264
YIQ	212.8670, 11.6410, 25.8250

Conversions

Conversions Part 2

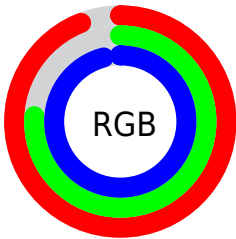
Format	Color
R _Y B	240, 193, 244
Decimal	15778292
CIE Lab	83.55, 25.31, -18.82
CIE LCh	84, 31.541, 323.357
Yxy	63.1968, 0.3121, 0.2765
Android (android.graphics.Color)	4293968372 (0xFFFF0C1F4)
YUV	212.8670, 15.3486, 23.7956
Hunter-Lab	79.4964, 21.0542, -14.4793

Details

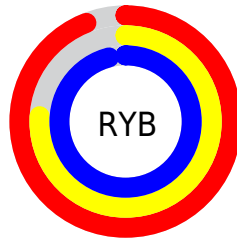
The XYZ color **71.3343, 63.1968, 94.0264** is a light color, and the websafe version is hex **FFCCFF**. A complement of this color would be **65.0044, 80.4235, 62.5523**, and the grayscale version is **63.0538, 66.3376, 72.2416**.

A 20% lighter version of the original color is **93.4756, 96.8512, 108.3752**, and **38.0769, 32.2864, 51.8020** is the 20% darker color. If you saturate the color by 10%, you get **65.7335, 52.9534, 92.3453**, and if you desaturate by 10%, it is **77.8357, 75.2289, 96.0071**.

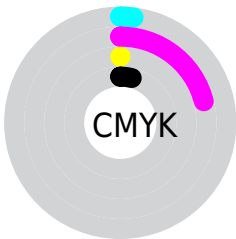
Distribution



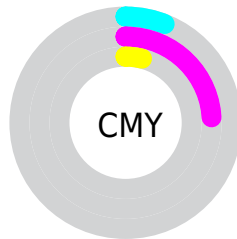
- Red (94%)
- Green (76%)
- Blue (96%)



- Red (94%)
- Yellow (76%)
- Blue (96%)



- Cyan (2%)
- Magenta (21%)
- Yellow (0%)
- Black (4%)



- Cyan (6%)
- Magenta (24%)
- Yellow (4%)

Brightness & Saturation Gradients

These gradients show how the XYZ color 71.3343, 63.1968, 94.0264 changes by changing the brightness by 10 percent. The first figure shows a shift by +10% for each color and the second figure -10%.

Similar to the brightness gradients but the following saturation gradients show a change of the XYZ color 71.3343, 63.1968, 94.0264 by changing the saturation by 10% instead.

71.3343, 63.1968,
94.0264

71.3343, 63.1968,
94.0264

454.4149,
436.2834, 561.9479

52.8986, 46.0004,
70.7325

120.1255,
109.4534, 154.9028

37.9490, 32.2462,
51.6434

151.2118,
139.2824, 193.3225

26.1201, 21.5496,
36.3407

187.2455,
174.0911, 237.6211

17.0467, 13.5263,
24.4056

228.5922,
214.2638, 288.2172

10.3633, 7.7920,
15.4198

275.6171,
260.1850, 345.5294

5.7046, 3.9621,
8.9647

328.6856,

2.7052, 1.6524,

312.2391, 409.9763

4.6216

388.1631,
370.8104, 481.9762

■ 0.9999, 0.3925,
1.9722

■ 0.0000, 0.0000,
0.5381

■ 71.3343, 63.1968,
94.0264

■ 71.3343, 63.1968,
94.0264

■ 65.7335, 52.9534,
92.3453

■ 77.8357, 75.2289,
96.0071

■ 60.9838, 44.4032,
90.9453

■ 85.2724, 89.1227,
98.2969

■ 57.0399, 37.4544,
89.8120

■ 90.0051, 97.5980,
99.6834

■ 53.8498, 32.0033,
88.9279

■ 90.6789, 97.9454,
99.7149

51.3555, 27.9337,
88.2739

91.3596, 98.2963,
99.7468

49.4904, 25.1125,
87.8276

92.0472, 98.6508,
99.7790

48.1749, 23.3805,
87.5626

92.7419, 99.0089,
99.8115

47.3388, 22.5177,
87.4402

93.3293, 99.3117,
99.8390

Harmonies

Analogous

The Analogous color harmony consists of three colors that are next to each other on the color wheel.



65.4728, 63.1968, 109.8447



71.3343, 63.1968, 94.0264



74.2081, 63.1968, 73.2933

Triad

The Triadic color harmony groups three colors that are evenly spaced from another and form a triangle on the color wheel.



71.3343, 63.1968, 94.0264



61.6122, 63.1968, 37.5886



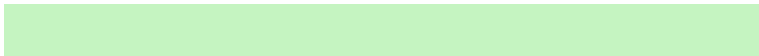
48.7080, 63.1968, 84.9731

Complementary

The Complementary color scheme is a pair of colors which are on the opposite of each other on the color wheel.



71.3343, 63.1968, 94.0264



65.0044, 80.4235, 62.5523

Split Complementary

Split-complementary colors differ from the complementary color scheme. The scheme consists of three colors, the original color and two neighbors of the complement color.



47.8466, 63.1968, 64.5145



71.3343, 63.1968, 94.0264



54.9666, 63.1968, 39.5283

Square

The Square scheme is like the rectangle color scheme, but the four colors are evenly spaced on the color wheel.



71.3343, 63.1968, 94.0264



68.3244, 63.1968, 42.6393



50.0528, 63.1968, 48.5615



52.5026, 63.1968, 103.9586

Rectangle

The Rectangle color scheme consists of four colors that form a rectangle on the color wheel.



71.3343, 63.1968, 94.0264



73.8984, 63.1968, 60.4135



50.0528, 63.1968, 48.5615



48.0784, 63.1968, 77.9518

Sweetspot

The Sweet Spot groups the original color and five complimentary colors.



71.3362, 63.1995, 94.0278



89.9218, 90.3968, 107.3167



58.3471, 57.9182, 93.6930



19.1324, 19.1348, 22.9349



0.0000, 0.0000, 0.0000



20.3446, 21.4041, 23.3091

Same Dimension

The Same Dimension uses a secret algorithm to generate beautiful new colors.



71.3362, 63.1995, 94.0278



76.1599, 64.9148, 103.1235



69.6657, 62.6899, 78.0660



17.0779, 16.6983, 20.8656



25.7939, 12.2715, 47.5472



2.3044, 1.0978, 4.1807

Inverse Universe

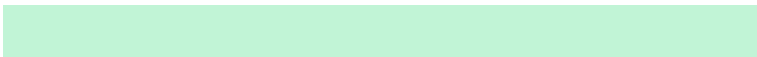
The Inverse Universe completely reimagines the original color for something new.



66.4583, 61.4069, 61.1760



69.9176, 62.6276, 60.7769



66.5147, 80.9082, 75.8994



16.5519, 16.5036, 17.3867



20.3696, 10.4913, 1.3885



1.8082, 0.9292, 0.2161

Previews

White Background



This preview shows how the XYZ color 71.3343, 63.1968, 94.0264 looks on a white background.

Color Contrast Check

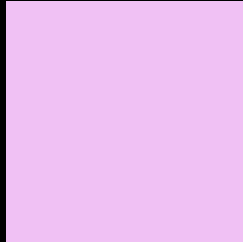
Large Text (above 18pt) WCAG AA × Fail

Any Text WCAG AA × Fail

Large Text (above 18pt) WCAG AAA × Fail

Any Text WCAG AAA × Fail

Black Background



This preview shows how the XYZ color 71.3343, 63.1968, 94.0264 looks on a black background.

Color Contrast Check

Large Text (above 18pt) WCAG AA ✓ Pass

Any Text WCAG AA ✓ Pass

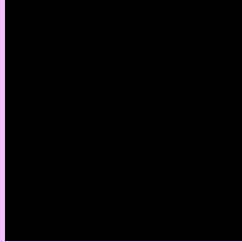
Large Text (above 18pt) WCAG AAA ✓ Pass

Any Text WCAG AAA ✓ Pass

If you want to check with other color combinations, try the [Color Contrast Checker](#).

XYZ 71.3343, 63.1968, 94.0264

Background



This preview shows how black text looks on a background with the XYZ color 71.3343, 63.1968, 94.0264.



This preview shows how white text looks on a background with the XYZ color 71.3343, 63.1968,

Color Blindness Simulation

Color vision deficiency is a very complex topic, and I could not describe the different causes any better than Wikipedia does, so if you want to learn more, you should check out their [article about color blindness](#).

Dichromacy



Original Color

71.3343, 63.1968, 94.0264

Protanopia

63.3311, 63.7233, 101.8904

Deuteranopia

64.8235, 63.2688, 92.7999



Tritanopia

66.9238, 63.0761, 72.2660

Trichromacy



Original Color

71.3343, 63.1968, 94.0264



Protanomaly

65.8164, 63.2893, 99.1896



Deuteranomaly

67.0325, 63.0059, 93.4224



Tritanomaly

68.2556, 62.9206, 79.7816

Monochromacy



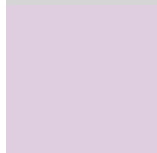
Original Color

71.3343, 63.1968, 94.0264



Achromatopsia

63.2451, 66.5387, 72.4607



Achromatomaly

65.9573, 65.2124, 79.6319

CSS Examples

Text

The CSS property to change the color of the text to XYZ 71.3343, 63.1968, 94.0264 is called "color". The color property can be set on classes, ids or directly on the HTML element.

This example shows how text in the color `rgb(240, 193, 244)` looks like.

```
.text, #text, p{  
    color:rgb(240, 193, 244)  
}
```

If you want to add a text shadow in that color use the text-shadow property, you can generate a text shadow directly with our [CSS Text Shadow Generator](#).

Here you see how black text with a 4 pixel rgb(240, 193, 244) colored shadow looks like.

```
.shadow{ text-shadow: 4px 4px 2px rgb(240, 193, 244) }
```

Border

The CSS property to change the border of an element to XYZ 71.3343, 63.1968, 94.0264 is called "border". The border property can be set on classes, ids or directly on the HTML element.

This example shows the color as border, it can be applied via the CSS property "border" or "border-color".

```
.border, #border, table{ border:4px solid rgb(240, 193, 244) }
```


If only the border color should be changed use the property `border-color`.

```
.border{ border-color:rgb(240, 193, 244) }
```

If you want to add a box shadow in that color use:

Here you see how a box with a 4 pixel `rgb(240, 193, 244)` colored shadow looks like.

```
.boxshadow{ -moz-box-shadow:4px 4px 4px  
4px rgb(240, 193, 244); -webkit-box-  
shadow:4px 4px 4px 4px rgb(240, 193, 244);  
box-shadow:4px 4px 4px 4px rgb(240, 193,  
244) }
```

Background

The CSS property to change the background color of an element to XYZ 71.3343, 63.1968, 94.0264 is called "background". The background property can be set on classes, ids or directly on the HTML element.

```
.background, #background, body{  
background: rgb(240, 193, 244) }
```

If only the background color should be changed can be used:

```
.background{ background-color: rgb(240,  
193, 244) }
```

This example shows the color as background, it is applied via the CSS property "background".

To optimize and compress your CSS code, you can use our [online CSS compressor and optimizer](#) based on csstidy. If you want to create a linear or radial gradient as background or border, check our [CSS Gradient Generator](#).

Hey! You found this booklet interesting? Support Converting Colors with the new Membership Option!

The pro membership hides all ads, plus gives you double the colors in the color bucket, and more awesome pro features!

[Learn more, Memberships starting at \\$2.50/m!](#)

**Follow me
on Twitter!**

@ConvertingColor