

Converting Colors

XYZ(71.2193, 72.2355, 67.9446)

Have a look what the booklet for
XYZ(71.2193, 72.2355, 67.9446)
contains.

XYZ(71.0922, 72.2106, 67.9487)	3
<i>Conversions</i>	4
<i>Details</i>	6
<i>Harmonies</i>	12
<i>Previews</i>	24
<i>Color Blindness Simulation</i>	28
<i>CSS Examples</i>	31

Color

**XYZ(71.0922, 72.2106,
67.9487)**

Conversions

Conversions Part 1

Format	Color
Hex	EED9CD
RGB	238, 217, 205
RGB Percent	93%, 85%, 80%
CMY	0.0667, 0.1490, 0.1961
CMYK	0.00, 0.09, 0.14, 0.07
HSL	22°, 49%, 87%
HSV	22°, 14%, 93%
XYZ	71.0922, 72.2106, 67.9487
YIQ	221.9110, 16.3680, 0.7200

Conversions

Conversions Part 2

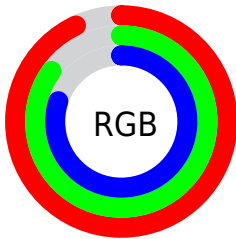
Format	Color
R _Y B	238, 224, 205
Decimal	15653325
CIE Lab	88.07, 5.29, 8.52
CIE LCh	88, 10.030, 58.150
Yxy	72.2106, 0.3365, 0.3418
Android (android.graphics.Color)	4293843405 (0xFFEED9CD)
YUV	221.9110, -8.3371, 14.1101
Hunter-Lab	84.9768, 0.6249, 12.0746

Details

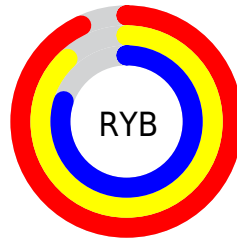
The XYZ color **71.0922, 72.2106, 67.9487** is a light color, and the websafe version is hex **CCCCCC**. A complement of this color would be **67.8055, 73.5435, 91.5112**, and the grayscale version is **69.4189, 73.0341, 79.5341**.

A 20% lighter version of the original color is **95.0500, 100.0000, 108.9000**, and **37.7976, 38.0201, 34.6246** is the 20% darker color. If you saturate the color by 10%, you get **64.7099, 63.6987, 52.7091**, and if you desaturate by 10%, it is **78.2737, 81.6200, 85.6124**.

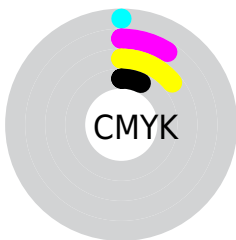
Distribution



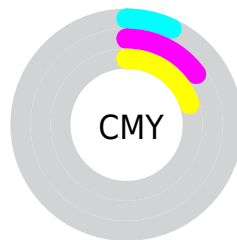
- Red (93%)
- Green (85%)
- Blue (80%)



- Red (93%)
- Yellow (88%)
- Blue (80%)



- Cyan (0%)
- Magenta (9%)
- Yellow (14%)
- Black (7%)



- Cyan (7%)
- Magenta (15%)
- Yellow (20%)

Brightness & Saturation Gradients

These gradients show how the XYZ color 71.0922, 72.2106, 67.9487 changes by changing the brightness by 10 percent. The first figure shows a shift by +10% for each color and the second figure -10%.

Similar to the brightness gradients but the following saturation gradients show a change of the XYZ color 71.0922, 72.2106, 67.9487 by changing the saturation by 10% instead.

71.0922, 72.2106,
67.9487

71.0922, 72.2106,
67.9487

453.5825,
468.2743, 471.9074

52.7002, 53.3307,
49.3896

119.7828,
122.3559, 117.9323

37.7900, 38.0669,
34.5608

150.8122,
154.3901, 150.1938

25.9963, 26.0346,
23.0439

186.7847,
191.5779, 187.8599

16.9535, 16.8495,
14.4203

228.0658,
234.3037, 231.3490

10.2964, 10.1273,
8.2715

275.0207,
282.9518, 281.0798

5.6597, 5.4834,
4.1789

328.0149,

2.6780, 2.5336,

337.9067, 337.4708

1.7240

387.4137,
399.5527, 400.9404

■ 0.9859, 0.8934,
0.3771

■ 0.0000, 0.0000,
0.0000

■ 71.0922, 72.2106,
67.9487

■ 71.0922, 72.2106,
67.9487

■ 64.7099, 63.6987,
52.7091

■ 78.2737, 81.6200,
85.6124

■ 59.0915, 56.0477,
39.7821

■ 86.2761, 91.9431,
105.7958

■ 54.2080, 49.2323,
29.0545

■ 89.0702, 96.9173,
108.6202

■ 50.0257, 43.2223,
20.4013

■ 46.5082, 37.9857,
13.6851

■ 43.6155, 33.4877,
8.7514

■ 41.3020, 29.6907,
5.4218

■ 39.5143, 26.5521,
3.4796

■ 38.6343, 24.9254,
2.7748

Harmonies

Analogous

The Analogous color harmony consists of three colors that are next to each other on the color wheel.



72.7738, 72.2106, 72.5672



71.0922, 72.2106, 67.9487



68.7827, 72.2106, 66.1695

Triad

The Triadic color harmony groups three colors that are evenly spaced from another and form a triangle on the color wheel.



71.0922, 72.2106, 67.9487



64.1347, 72.2106, 78.2002



70.8290, 72.2106, 90.8328

Complementary

The Complementary color scheme is a pair of colors which are on the opposite of each other on the color wheel.



71.0922, 72.2106, 67.9487



67.8055, 73.5435, 91.5112

Split Complementary

Split-complementary colors differ from the complementary color scheme. The scheme consists of three colors, the original color and two neighbors of the complement color.



68.4855, 72.2106, 92.5531



71.0922, 72.2106, 67.9487



64.6543, 72.2106, 85.0110

Square

The Square scheme is like the rectangle color scheme, but the four colors are evenly spaced on the color wheel.



71.0922, 72.2106, 67.9487



64.7972, 72.2106, 71.8706



66.2331, 72.2106, 90.3650



72.6194, 72.2106, 85.7900

Rectangle

The Rectangle color scheme consists of four colors that form a rectangle on the color wheel.



71.0922, 72.2106, 67.9487



67.2099, 72.2106, 66.7499



66.2331, 72.2106, 90.3650



70.0781, 72.2106, 91.8313

Sweetspot

The Sweet Spot groups the original color and five complimentary colors.



71.0942, 72.2138, 67.9502



91.4155, 95.2895, 99.8008



70.8814, 67.3565, 81.5418



19.4241, 20.2104, 21.0066



0.0000, 0.0000, 0.0000



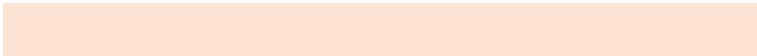
20.3446, 21.4041, 23.3091

Same Dimension

The Same Dimension uses a secret algorithm to generate beautiful new colors.



71.0942, 72.2138, 67.9502



80.6635, 81.1636, 73.4708



75.4332, 80.8919, 69.3966



16.2435, 16.7002, 16.5170



21.6660, 14.1301, 1.5855



1.8939, 1.3584, 0.1624

Inverse Universe

The Inverse Universe completely reimagines the original color for something new.



67.8055, 73.5435, 91.5112



76.0347, 83.0333, 106.6273



63.6447, 65.2217, 90.1243



15.7358, 16.9057, 20.1554



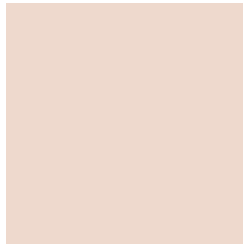
14.9493, 16.1228, 47.4520



1.3379, 1.5297, 3.9790

Previews

White Background



This preview shows how the XYZ color 71.0922, 72.2106, 67.9487 looks on a white background.

Color Contrast Check

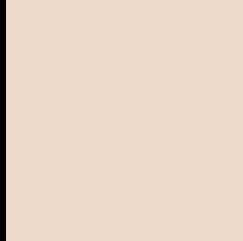
Large Text (above 18pt) WCAG AA × Fail

Any Text WCAG AA × Fail

Large Text (above 18pt) WCAG AAA × Fail

Any Text WCAG AAA × Fail

Black Background



This preview shows how the XYZ color 71.0922, 72.2106, 67.9487 looks on a black background.

Color Contrast Check

Large Text (above 18pt) WCAG AA ✓ Pass

Any Text WCAG AA ✓ Pass

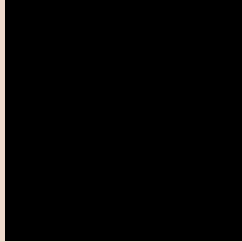
Large Text (above 18pt) WCAG AAA ✓ Pass

Any Text WCAG AAA ✓ Pass

If you want to check with other color combinations, try the [Color Contrast Checker](#).

XYZ 71.0922, 72.2106, 67.9487

Background



This preview shows how black text looks on a background with the XYZ color 71.0922, 72.2106, 67.9487.



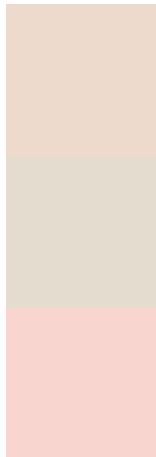
This preview shows how white text looks on a background with the XYZ color 71.0922, 72.2106,

67.9487.

Color Blindness Simulation

Color vision deficiency is a very complex topic, and I could not describe the different causes any better than Wikipedia does, so if you want to learn more, you should check out their [article about color blindness](#).

Dichromacy



Original Color

71.0922, 72.2106, 67.9487

Protanopia

68.8506, 72.1854, 69.3358

Deuteranopia

73.6462, 72.0012, 68.4086



Tritanopia

74.3528, 72.0024, 84.8420

Trichromacy



Original Color

71.0922, 72.2106, 67.9487

Protanomaly

69.7508, 72.2751, 68.6667

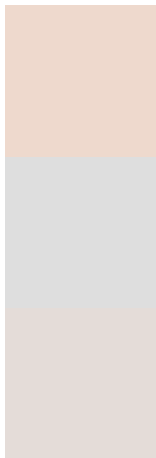
Deuteranomaly

72.4954, 71.7825, 68.4270

Tritanomaly

73.0329, 71.8389, 78.4237

Monochromacy



Original Color

71.0922, 72.2106, 67.9487

Achromatopsia

69.4303, 73.0461, 79.5472

Achromatomaly

69.9828, 72.6382, 75.2978

CSS Examples

Text

The CSS property to change the color of the text to XYZ 71.0922, 72.2106, 67.9487 is called "color". The color property can be set on classes, ids or directly on the HTML element.

This example shows how text in the color rgb(238, 217, 205) looks like.

```
.text, #text, p{  
    color:rgb(238, 217, 205)  
}
```

If you want to add a text shadow in that color use the text-shadow property, you can generate a text shadow directly with our [CSS Text Shadow Generator](#).

Here you see how black text with a 4 pixel rgb(238, 217, 205) colored shadow looks like.

```
.shadow{ text-shadow: 4px 4px 2px rgb(238, 217, 205) }
```

Border

The CSS property to change the border of an element to XYZ 71.0922, 72.2106, 67.9487 is called "border". The border property can be set on classes, ids or directly on the HTML element.

This example shows the color as border, it can be applied via the CSS property "border" or "border-color".

```
.border, #border, table{ border:4px solid rgb(238, 217, 205) }
```


If only the border color should be changed use the property border-color.

```
.border{ border-color:rgb(238, 217, 205) }
```

If you want to add a box shadow in that color use:

Here you see how a box with a 4 pixel rgb(238, 217, 205) colored shadow looks like.

```
.boxshadow{ -moz-box-shadow:4px 4px 4px  
4px rgb(238, 217, 205); -webkit-box-  
shadow:4px 4px 4px 4px rgb(238, 217, 205);  
box-shadow:4px 4px 4px 4px rgb(238, 217,  
205) }
```

Background

The CSS property to change the background color of an element to XYZ 71.0922, 72.2106, 67.9487 is called "background". The background property can be set on classes, ids or directly on the HTML element.

```
.background, #background, body{  
background: rgb(238, 217, 205) }
```

If only the background color should be changed can be used:

```
.background{ background-color: rgb(238,  
217, 205) }
```

This example shows the color as background, it is applied via the CSS property "background".

To optimize and compress your CSS code, you can use our [online CSS compressor and optimizer](#) based on csstidy. If you want to create a linear or radial gradient as background or border, check our [CSS Gradient Generator](#).

Hey! You found this booklet interesting? Support Converting Colors with the new Membership Option!

The pro membership hides all ads, plus gives you double the colors in the color bucket, and more awesome pro features!

[Learn more, Memberships starting at \\$2.50/m!](#)

**Follow me
on Twitter!**

@ConvertingColor