

# Converting Colors

XYZ(71.2301, 71.0152, 74.1243)

Have a look what the booklet for  
XYZ(71.2301, 71.0152, 74.1243)  
contains.

<b>XYZ(71.2374, 71.0040, 74.2405)</b> .....	3
<b><i>Conversions</i></b> .....	4
<b><i>Details</i></b> .....	6
<b><i>Harmonies</i></b> .....	12
<b><i>Previews</i></b> .....	24
<b><i>Color Blindness Simulation</i></b> .....	28
<b><i>CSS Examples</i></b> .....	31

# Color

**XYZ(71.2374, 71.0040,  
74.2405)**

# Conversions

## Conversions Part 1

<b>Format</b>	<b>Color</b>
Hex	EDD6D7
RGB	237, 214, 215
RGB Percent	93%, 84%, 84%
CMY	0.0706, 0.1608, 0.1569
CMYK	0.00, 0.10, 0.09, 0.07
HSL	357°, 39%, 88%
HSV	357°, 10%, 93%
XYZ	71.2374, 71.0040, 74.2405
YIQ	220.9910, 13.3870, 5.1870

# Conversions

## Conversions Part 2

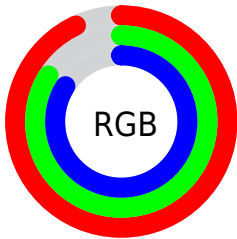
Format	Color
R <sub>Y</sub> B	237, 214, 215
Decimal	15587031
CIE Lab	87.49, 8.11, 2.39
CIE LCh	87, 8.460, 16.441
Yxy	71.0040, 0.3291, 0.3280
Android (android.graphics.Color)	4293777111 (0xFFEDD6D7)
YUV	220.9910, -2.9536, 14.0399
Hunter-Lab	84.2639, 3.4437, 6.7474

# Details

The XYZ color **71.2374, 71.0040, 74.2405** is a light color, and the websafe version is hex **CCCCCC**. A complement of this color would be **73.1589, 80.9225, 91.1247**, and the grayscale version is **68.7361, 72.3158, 78.7519**.

A 20% lighter version of the original color is **95.0500, 100.0000, 108.9000**, and **37.7994, 37.1581, 38.4377** is the 20% darker color. If you saturate the color by 10%, you get **62.9559, 58.7845, 58.0881**, and if you desaturate by 10%, it is **80.7993, 85.1366, 92.8135**.

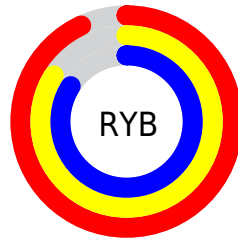
# Distribution



Red (93%)

Green (84%)

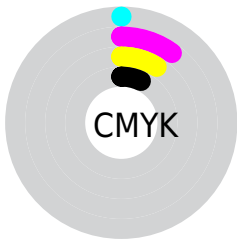
Blue (84%)



Red (93%)

Yellow (84%)

Blue (84%)

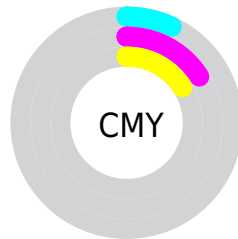


Cyan (0%)

Magenta (10%)

Yellow (9%)

Black (7%)



Cyan (7%)

Magenta (16%)

Yellow (16%)

# Brightness & Saturation Gradients

These gradients show how the XYZ color 71.2374, 71.0040, 74.2405 changes by changing the brightness by 10 percent. The first figure shows a shift by +10% for each color and the second figure -10%.

Similar to the brightness gradients but the following saturation gradients show a change of the XYZ color 71.2374, 71.0040, 74.2405 by changing the saturation by 10% instead.



71.2374, 71.0040,  
74.2405

71.2374, 71.0040,  
74.2405

454.0818,  
464.0674, 494.4886

52.8192, 52.3455,  
54.4929

119.9884,  
120.6394, 126.9739

37.8853, 37.2805,  
38.6000

151.0518,  
152.3851, 160.7967

26.0705, 25.4248,  
26.1433

187.0611,  
189.2619, 200.1484

17.0094, 16.3938,  
16.7041

228.3815,  
231.6543, 245.4475

10.3365, 9.8032,  
9.8641

275.3785,  
279.9467, 297.1126

5.6866, 5.2687,  
5.2045

328.4172,

2.6943, 2.4058,

334.5234, 355.5621

2.3069

387.8632,  
395.7688, 421.2145

■ 0.9942, 0.8289,  
0.7351

■ 0.0000, 0.0000,  
0.0000

■ 71.2374, 71.0040,  
74.2405

■ 71.2374, 71.0040,  
74.2405

■ 62.9559, 58.7845,  
58.0881

■ 80.7993, 85.1366,  
92.8135

■ 55.8950, 48.3870,  
44.2524

■ 88.7354, 96.7447,  
108.6045

■ 49.9986, 39.7272,  
32.6285

■ 45.2042, 32.7103,  
23.1017

■ 41.4434, 27.2325,  
15.5471

■ 38.6400, 23.1782,  
9.8265

■ 36.7075, 20.4155,  
5.7839

■ 35.5436, 18.7881,  
3.2372

■ 34.9931, 18.0440,  
1.9532

# Harmonies

## Analogous

The Analogous color harmony consists of three colors that are next to each other on the color wheel.



71.2892, 71.0040, 79.9183



71.2374, 71.0040, 74.2405



70.1680, 71.0040, 69.6129

# Triad

The Triadic color harmony groups three colors that are evenly spaced from another and form a triangle on the color wheel.



71.2374, 71.0040, 74.2405



64.7427, 71.0040, 69.9781



66.5909, 71.0040, 88.5021

# Complementary

The Complementary color scheme is a pair of colors which are on the opposite of each other on the color wheel.



71.2374, 71.0040, 74.2405



73.1589, 80.9225, 91.1247

# Split Complementary

Split-complementary colors differ from the complementary color scheme. The scheme consists of three colors, the original color and two neighbors of the complement color.



64.8756, 71.0040, 85.5573



71.2374, 71.0040, 74.2405



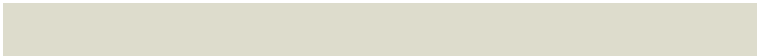
63.8228, 71.0040, 74.7616

# Square

The Square scheme is like the rectangle color scheme, but the four colors are evenly spaced on the color wheel.



71.2374, 71.0040, 74.2405



66.4062, 71.0040, 67.2363



63.8709, 71.0040, 80.4656



68.5798, 71.0040, 88.3456



# Rectangle

The Rectangle color scheme consists of four colors that form a rectangle on the color wheel.



71.2374, 71.0040, 74.2405



69.0336, 71.0040, 67.6627



63.8709, 71.0040, 80.4656



65.9640, 71.0040, 87.8361

# Sweetspot

The Sweet Spot groups the original color and five complimentary colors.



71.2394, 71.0071, 74.2420



91.5018, 94.7533, 102.0145



73.8770, 72.0180, 90.1288



19.3873, 19.9886, 21.4511



0.0000, 0.0000, 0.0000



20.3446, 21.4041, 23.3091

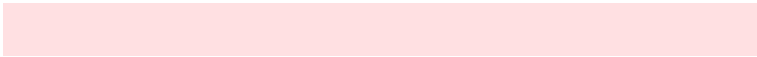


# Same Dimension

The Same Dimension uses a secret algorithm to generate beautiful new colors.



71.2394, 71.0071, 74.2420



81.6931, 80.2625, 82.9404



73.8146, 76.3617, 74.4710



15.0919, 15.0646, 15.7693



19.1107, 9.8470, 1.1185



1.5100, 0.7770, 0.1370



# Inverse Universe

The Inverse Universe completely reimagines the original color for something new.



71.2394, 71.0071, 74.2420



81.6931, 80.2625, 82.9404



70.3938, 75.1601, 90.9189



15.0919, 15.0646, 15.7693



19.1107, 9.8470, 1.1185

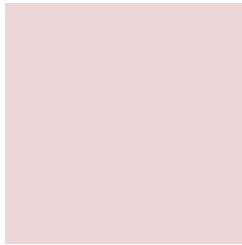


1.5100, 0.7770, 0.1370



# Previews

## White Background



This preview shows how the XYZ color 71.2374, 71.0040, 74.2405 looks on a white background.

## Color Contrast Check

Large Text (above 18pt) WCAG AA × Fail

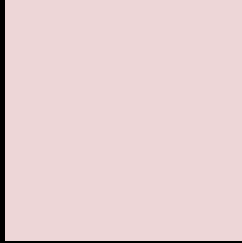
Any Text WCAG AA × Fail

Large Text (above 18pt) WCAG AAA × Fail

Any Text WCAG AAA × Fail



# Black Background



This preview shows how the XYZ color 71.2374, 71.0040, 74.2405 looks on a black background.

## Color Contrast Check

Large Text (above 18pt) WCAG AA ✓ Pass

Any Text WCAG AA ✓ Pass

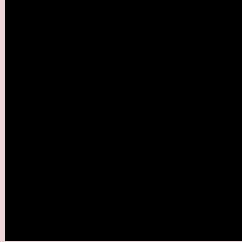
Large Text (above 18pt) WCAG AAA ✓ Pass

Any Text WCAG AAA ✓ Pass

If you want to check with other color combinations, try the [Color Contrast Checker](#).

**XYZ 71.2374, 71.0040, 74.2405**

## **Background**



This preview shows how black text looks on a background with the XYZ color 71.2374, 71.0040, 74.2405.



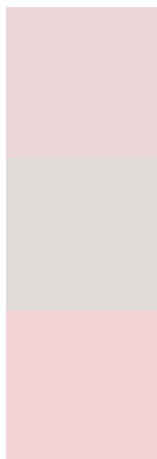
This preview shows how white text looks on a background with the XYZ color 71.2374, 71.0040,



# Color Blindness Simulation

Color vision deficiency is a very complex topic, and I could not describe the different causes any better than Wikipedia does, so if you want to learn more, you should check out their [article about color blindness](#).

## Dichromacy



### Original Color

71.2374, 71.0040, 74.2405

### Protanopia

68.3363, 70.9999, 75.7483

### Deuteranopia

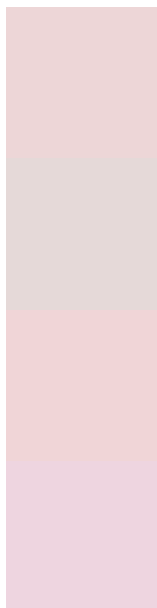
72.4272, 70.8705, 74.1520



## Tritanopia

73.2829, 71.0948, 83.9890

# Trichromacy



## Original Color

71.2374, 71.0040, 74.2405

## Protanomaly

69.5206, 71.2416, 75.0526

## Deuteranomaly

71.9952, 71.0201, 74.2037

## Tritanomaly

72.5087, 71.1475, 80.4322

# Monochromacy



## Original Color

71.2374, 71.0040, 74.2405

## Achromatopsia

68.7264, 72.3055, 78.7407

## Achromatomaly

69.5361, 71.5882, 77.1708

# CSS Examples

## Text

The CSS property to change the color of the text to XYZ 71.2374, 71.0040, 74.2405 is called "color". The color property can be set on classes, ids or directly on the HTML element.

This example shows how text in the color `rgb(237, 214, 215)` looks like.

```
.text, #text, p{  
    color:rgb(237, 214, 215)  
}
```

If you want to add a text shadow in that color use the text-shadow property, you can generate a text shadow directly with our [CSS Text Shadow Generator](#).

Here you see how black text with a 4 pixel rgb(237, 214, 215) colored shadow looks like.

```
.shadow{ text-shadow: 4px 4px 2px rgb(237, 214, 215) }
```

## Border

The CSS property to change the border of an element to XYZ 71.2374, 71.0040, 74.2405 is called "border". The border property can be set on classes, ids or directly on the HTML element.

This example shows the color as border, it can be applied via the CSS property "border" or "border-color".

```
.border, #border, table{ border:4px solid rgb(237, 214, 215) }
```



If only the border color should be changed use the property border-color.

```
.border{ border-color:rgb(237, 214, 215) }
```

If you want to add a box shadow in that color use:

Here you see how a box with a 4 pixel rgb(237, 214, 215) colored shadow looks like.

```
.boxshadow{ -moz-box-shadow:4px 4px 4px  
4px rgb(237, 214, 215); -webkit-box-  
shadow:4px 4px 4px 4px rgb(237, 214, 215);  
box-shadow:4px 4px 4px 4px rgb(237, 214,  
215) }
```

# Background

The CSS property to change the background color of an element to XYZ 71.2374, 71.0040, 74.2405 is called "background". The background property can be set on classes, ids or directly on the HTML element.

```
.background, #background, body{  
background: rgb(237, 214, 215) }
```

If only the background color should be changed can be used:

```
.background{ background-color: rgb(237,  
214, 215) }
```

This example shows the color as background, it is applied via the CSS property "background".

To optimize and compress your CSS code, you can use our [online CSS compressor and optimizer](#) based on csstidy. If you want to create a linear or radial gradient as background or border, check our [CSS Gradient Generator](#).

Hey! You found this booklet interesting? Support Converting Colors with the new Membership Option!

The pro membership hides all ads, plus gives you double the colors in the color bucket, and more awesome pro features!

**[Learn more, Memberships starting at \\$2.50/m!](#)**

**Follow me  
on Twitter!**

@ConvertingColor